



## Cisco UCS Integrated Infrastructure for Big Data (Cisco UCS CPA v3)

TPCx-HS Rev. 1.3.0  
TPC-Pricing Rev. 2.1.0

Report Date:  
September 18, 2015

Total System Cost

TPCx-HS Performance Metric

Price/Performance

**518,063 USD**

**12.34**  
HSph@30TB

**41,982.42 USD**  
\$/HSph@30TB

Scale Factor

Apache Hadoop Compatible Software

Operating System

Other Software

Availability Date

30TB

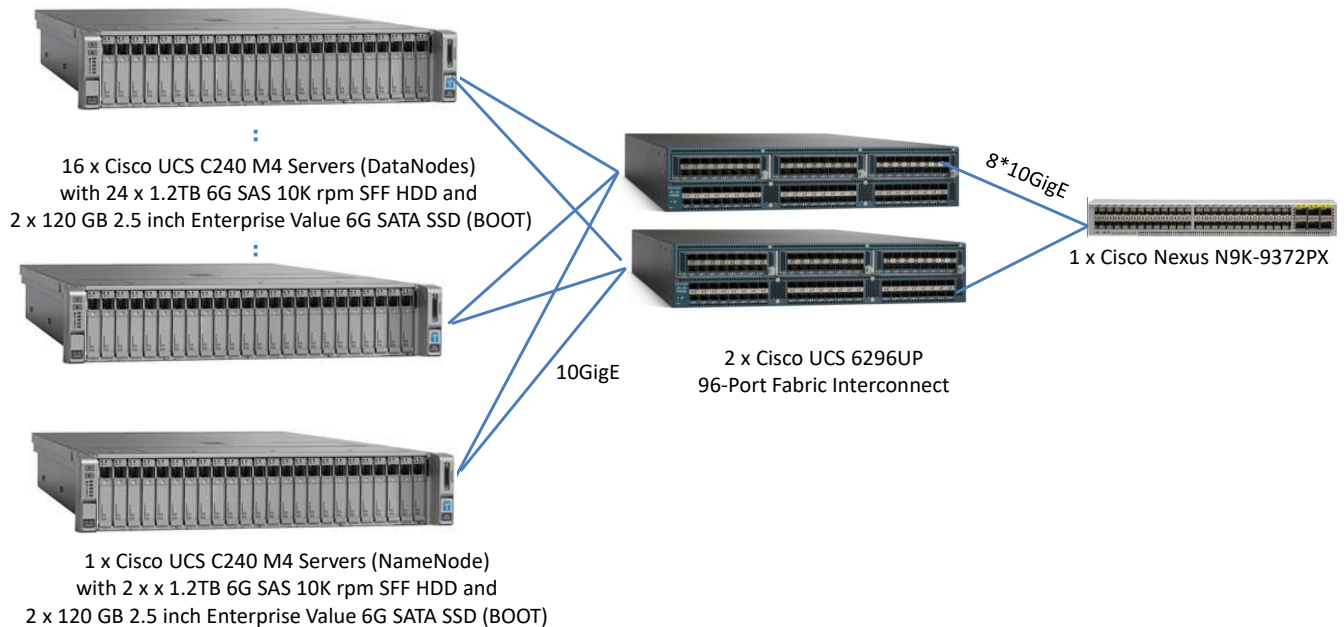
Cloudera Distribution for Apache Hadoop (CDH) 5.3.2

Red Hat Enterprise Linux Server 6.5

None

September 18, 2015

### System Configuration



Physical Storage/Scale Factor: 15.58

Scale Factor/Physical Memory: 7.06

<p>Servers: 17 x Cisco UCS C240M4 Server</p> <p>Total Processors/Cores/Threads 34/408/816</p> <p>Server Configuration:</p> <p>Processors 2 x Intel® Xeon® Processor E5-2680 v3, 2.50 GHz, 30MB L3</p> <p>Memory 256GB</p> <p>Storage Controller 1 x Cisco 12G SAS Modular Raid Controller, 2GB FBWC Cache</p> <p>Storage Device 24 x 1.2TB 6G SAS 10Krpm SFF HDD (for 16 DataNodes) 2 x 1.2TB 6G SAS 10Krpm SFF HDD (for 1 NameNode) 2 x 120GB 2.5in. Enterprise Value 6G SATA SSD (boot disks, all nodes)</p> <p>Network 1 x Cisco UCS VIC1227 VIC MLOM - Dual Port 10Gb SFP+</p> <p>Connectivity: 2 x Cisco UCS 6296UP 96-Port Fabric Interconnect, 1 x Cisco Nexus N9K-9372PX</p>	
--	--



## Cisco UCS Integrated Infrastructure for Big Data (Cisco UCS CPA v3)

TPCx-HS Rev. 1.3.0  
TPC-Pricing Rev. 2.1.0

Report Date:  
September 18, 2015

Description	Part Number	Source	Unit Price	Qty	Extended Price	3 Year Maint.
<b>Hardware Components</b>						
<b>Cisco UCS CPA v3 Performance Optimized Bundle</b>	UCS-SL-CPA3-P	1	\$0.00	1	\$0.00	
UCS C240 M4SX w/E52680v3,256GB mem (no sold standalone)	UCS-SA-C240M4SX-P	1	\$48,005.00	16	\$768,080.00	
2.50 GHz E5-2680 v3/120W 12C/30MB Cache/DDR4 2133MHz	UCS-CPU-E52680D	1	\$0.00	32	\$0.00	
16GB DDR4-2133-MHz RDIMM/PC4-17000/dual rank/x4/1.2v	UCS-MR-1X162RU-A	1	\$0.00	256	\$0.00	
120 GB 2.5 inch Enterprise Value 6G SATA SSD (BOOT)	UCS-SD120G0KSB-EV	1	\$0.00	32	\$0.00	
1.2 TB 6G SAS 10K rpm SFF HDD	UCS-HD12T10KS2-E	1	\$0.00	384	\$0.00	
Cisco 12Gbps SAS 2GB FBWC Cache module (Raid 0/1/5/6)	UCSC-MRAID12G-2GB	1	\$0.00	16	\$0.00	
Cisco 12G SAS Modular Raid Controller	UCSC-MRAID12G	1	\$0.00	16	\$0.00	
Cisco UCS VIC1227 VIC MLOM - Dual Port 10Gb SFP+	UCSC-MLOM-CSC-02	1	\$0.00	16	\$0.00	
Right PCI Riser Bd (Riser 1) 2onbd SATA bootdrvs+ 2PCI slts	UCSC-PCI-1C-240M4	1	\$0.00	16	\$0.00	
1200W / 800W V2 AC Power Supply for 2U C-Series Servers	UCSC-PSU2V2-1200W	1	\$0.00	32	\$0.00	
Power Cord 125VAC 13A NEMA 5-15 Plug North America	CAB-9K12A-NA	1	\$0.00	32	\$0.00	
Right PCI Riser Bd (Riser 1) 2onbd SATA bootdrvs+ 2PCI slts	UCSC-PCI-1C-240M4	1	\$0.00	16	\$0.00	
Heat sink for UCS C240 M4 rack servers	UCSC-HS-C240M4	1	\$0.00	32	\$0.00	
Supercap cable 250mm	UCSC-SCCBL240	1	\$0.00	16	\$0.00	
Ball Bearing Rail Kit for C220 M4 and C240 M4 rack servers	UCSC-RAILB-M4	1	\$0.00	16	\$0.00	
(Not sold standalone) UCS 6296UP 2RU FI w/18p LIC,16xCables	UCS-SA-BD-FI96	1	\$22,517.00	2	\$45,034.00	
UCS 6296UP Power Supply/100-240VAC	UCS-PSU-6296UP-AC	1	\$0.00	4	\$0.00	
10GBASE-CU SFP+ Cable 3 Meter	SFP-H10GB-CU3M	1	\$0.00	32	\$0.00	
UCS Manager v2.2	N10-MGT012	1	\$0.00	2	\$0.00	
UCS 6296UP Chassis Accessory Kit	UCS-ACC-6296UP	1	\$0.00	2	\$0.00	
UCS 6200 Series Expansion Module Blank	UCS-BLKE-6200	1	\$0.00	6	\$0.00	
UCS 6296UP Fan Module	UCS-FAN-6296UP	1	\$0.00	8	\$0.00	
Power Cord 125VAC 13A NEMA 5-15 Plug North America	CAB-9K12A-NA	1	\$0.00	4	\$0.00	
UCS C240 M4 SFF 24 HD w/o CPU mem HD PCIe PS railkt w/expndr	UCSC-C240-M4SX	1	\$3,995.00	1	\$3,995.00	
2.50 GHz E5-2680 v3/120W 12C/30MB Cache/DDR4 2133MHz	UCS-CPU-E52680D	1	\$5,259.00	2	\$10,518.00	
16GB DDR3-1866-MHz RDIMM/PC3-14900/dual rank/x4/1.5v	UCS-MR-1X162RU-A	1	\$725.00	16	\$11,600.00	
120 GB 2.5 inch Enterprise Value 6G SATA SSD (BOOT)	UCS-SD120G0KSB-EV	1	\$748.00	2	\$1,496.00	
1.2 TB 6G SAS 10K rpm SFF HDD	UCS-HD12T10KS2-E	1	\$1,460.63	2	\$2,921.26	
Cisco 12Gbps SAS 2GB FBWC Cache module (Raid 0/1/5/6)	UCSC-MRAID12G-2GB	1	\$1,405.00	1	\$1,405.00	
Cisco 12G SAS Modular Raid Controller	UCSC-MRAID12G	1	\$656.00	1	\$656.00	
Cisco UCS VIC1227 VIC MLOM - Dual Port 10Gb SFP+	UCSC-MLOM-CSC-02	1	\$1,499.00	1	\$1,499.00	
1200W / 800W V2 AC Power Supply for 2U C-Series Servers	UCSC-PSU2V2-1200W	1	\$749.00	2	\$1,498.00	
Power Cord 125VAC 13A NEMA 5-15 Plug North America	CAB-9K12A-NA	1	\$0.00	2	\$0.00	
Right PCI Riser Bd (Riser 1) 2onbd SATA bootdrvs+ 2PCI slts	UCSC-PCI-1C-240M4	1	\$148.00	1	\$148.00	
Heat sink for UCS C240 M4 rack servers	UCSC-HS-C240M4	1	\$0.00	1	\$0.00	
Supercap cable 250mm	UCSC-SCCBL240	1	\$0.00	1	\$0.00	
Ball Bearing Rail Kit for C220 M4 and C240 M4 rack servers	UCSC-RAILB-M4	1	\$220.00	1	\$220.00	
Cisco Smart Net 24X7X4 3Y UCS C240 M4S BD SP Server	CON-OSP-C240V4SP	1	\$1,284.99	17		\$21,845
2nd Gen FI License to connect C-direct only	UCS-L-6200-10G-C	1	\$925.00	14	\$12,950.00	
10GBASE-CU SFP+ Cable 3 Meter	SFP-H10GB-CU3M	1	\$100.00	18	\$1,800.00	
Cisco R42610 standard rack w/side panels	RACK-UCS2	1	\$3,429.00	1	\$3,429.00	
Cisco Smart Net 24X7X4 3Y UCS 6296UP 2RU Fabric Int/2 PSU/4 Fans	CON-SNTP-FI6296UP	1	\$5,781.00	2		\$11,562
Cisco Nexus 9372PX Switch	N9K-C9372PX	1	\$22,500.00	1	\$22,500.00	
Cisco SNTP Cisco Nexus 9372PX Switch, 36 24x7	CON-SNTP-9372PX	1	\$5,256.00	1		\$5,256
<b>Hardware subtotal</b>					<b>\$889,749.26</b>	<b>\$38,663</b>



**Cisco UCS Integrated Infrastructure  
for Big Data (Cisco UCS CPA v3)**

TPCx-HS Rev. 1.3.0  
TPC-Pricing Rev. 2.1.0

Report Date:  
September 18, 2015

Description	Part Number	Source	Unit Price	Qty	Extended Price	3 Year Maint.
<b>Software Components</b>						
Red Hat Enterprise Linux Server, 3Y 24x7	CON-ISV1-RH2SUG3A	1	\$2,397.00	17	\$40,749.00	Inc.
Cloudera Enterprise Edition	UCS-BD-CB185-3YR	1	\$12,651.00	17	\$215,067.00	Inc.
<b>Software subtotal</b>					<b>\$255,816.00</b>	
<b>Total</b>					<b>\$1,145,565.26</b>	<b>\$38,663</b>
Acer V206HQLAbd - LED monitor - 20" (Inc. 2 spares)	UM.1V6AA.A02	2	\$94.99	3	\$284.97	
Logitech USB Corded Keyboard/Mouse Combo MK120 (Inc. 2 spares)	920-002565	2	\$17.99	3	\$53.97	
Large Purchase Discount <sup>(1)</sup> (50% for products and 35% for service)		1			(\$652,972.20)	(\$13,532)

Pricing: 1 = Cisco, 2 = CDW.com

<sup>(1)</sup> All discounts are based on US list prices and for similar quantities and configurations. The discounts are based on the overall specific components pricing from respective vendors in this single quotation. Discounts for similarly sized configurations will be similar to those quoted here, but may vary based on the components in the configuration.

**Audited by Doug Johnson of InfoSizing, Inc.**

<b>Three-Year Cost of Ownership</b>	<b>\$518,063</b>
<b>HSph@30TB</b>	<b>12.34</b>
<b>\$/HSph@30TB</b>	<b>\$41,982.42</b>

Prices used in TPC benchmarks reflect the actual prices a customer would pay for a one-time purchase of the stated components. Individually negotiated discounts are not permitted. Special prices based on assumptions about past or future purchases are not permitted. All discounts reflect standard pricing policies for the listed components. For complete details, see the pricing sections of the TPC benchmark specifications. If you find that the stated prices are not available according to these terms, please inform at [pricing@tpc.org](mailto:pricing@tpc.org). Thank you.



## Cisco UCS Integrated Infrastructure for Big Data (Cisco UCS CPA v3)

TPCx-HS Rev. 1.3.0  
TPC-Pricing Rev. 2.1.0

Report Date:  
September 18, 2015

### Measurement Results for Performance Run

Scale Factor	30TB
Run Start Time	9/15/2015 19:29:42
Run End Time	9/15/2015 21:55:30
Run Elapsed Time	8,751.00
HSGen Start Time	9/15/2015 19:29:42
HSGen End Time	9/15/2015 20:06:10
HSGen Elapsed Time	2,189.85
HSSort Start Time	9/15/2015 20:06:13
HSSort End Time	9/15/2015 21:39:46
HSSort Elapsed Time	5,614.20
HSValidate Start Time	9/15/2015 21:39:50
HSValidate End Time	9/15/2015 21:55:30
HSValidate Elapsed Time	941.757

### Measurement Results for Repeatability Run

Scale Factor	30TB
Run Start Time	9/15/2015 16:48:10
Run End Time	9/15/2015 19:12:55
Run Elapsed Time	8,689.00
HSGen Start Time	9/15/2015 16:48:10
HSGen End Time	9/15/2015 17:23:42
HSGen Elapsed Time	2,133.43
HSSort Start Time	9/15/2015 17:23:44
HSSort End Time	9/15/2015 18:56:52
HSSort Elapsed Time	5,588.92
HSValidate Start Time	9/15/2015 18:56:56
HSValidate End Time	9/15/2015 19:12:55
HSValidate Elapsed Time	960.679



### Run Report for Performance Run

```
=====  
TPCx-HS Performance Metric (HSph@SF) Report  
  
Test Run 2 details: Total Time = 8751  
                    Total Size = 300000000000  
                    Scale-Factor = 30.0000  
  
TPCx-HS Performance Metric (HSph@SF): 12.3416
```

### Run Report for Repeatability Run

```
=====  
TPCx-HS Performance Metric (HSph@SF) Report  
  
Test Run 1 details: Total Time = 8689  
                    Total Size = 300000000000  
                    Scale-Factor = 30.0000  
  
TPCx-HS Performance Metric (HSph@SF): 12.4295  
=====
```