



Dell Inc.

TPC Benchmark™ H Full Disclosure Report

Dell PowerEdge R6415

(with 14x Dell PowerEdge R6415 Servers)

using

Exasol 6.2

Second Edition -- April 2, 2021

(First Edition released on July 8, 2019)

*Dell PowerEdge R6415
using
Exasol 6.2*

Dell Inc. (Dell), the Sponsor of this benchmark test, believes that the information in this document is accurate as of the publication date. The information in this document is subject to change without notice. The Sponsor assumes no responsibility for any errors that may appear in this document. The pricing information in this document is believed to accurately reflect the current prices as of the publication date. However, we provide no warranty of the pricing information in this document.

Benchmark results are highly dependent upon workload, specific application requirements, system design and implementation. Relative system performance will vary as a result of these and other factors. Therefore, TPC Benchmark™ H should not be used as a substitute for a specific customer application benchmark when critical capacity planning and/or product evaluation decisions are contemplated.

All performance data contained in this report were obtained in a rigorously controlled environment. Results obtained in other operating environments may vary significantly. We do not warrant or represent that a user can or will achieve similar performance. No warranty of system performance or price/performance is expressed or implied in this report.

Copyright © 2019 Dell Inc. All rights reserved.

All rights reserved. Permission is hereby granted to reproduce this document in whole or in part provided the copyright notice printed above is set forth in full text on the title page of each item reproduced.

Dell and the Dell Logo are trademarks of Dell Inc. and/or its affiliates in the U.S. and other countries. Third party trademarks mentioned are the property of their respective owners. The use of the word partner does not imply a partnership relationship between Dell and any other company.

PowerEdge R6415 is a trademark of Dell.

Exasol is trademark of Exasol AG.

AMD and EPYC are trademarks of AMD Corporation.

Mellanox is trademark of Mellanox Technologies.

TPC Benchmark and TPC-H are trademarks or registered trademarks of the Transaction Processing Performance Council (TPC).

All other brand or product names mentioned are considered trademarks or registered trademarks of their respective owners.



Dell PowerEdge R6415 using Exasol 6.2

TPC-H Rev. 3.0.0
TPC-Pricing Rev. 2.4.0

Report Date
April 2, 2021

Total System Cost

Composite Query per Hour Metric

Price / Performance

\$420,645 USD

6,053,020.5
QphH@3000GB

\$ 69.50 USD
\$/kQphH@3000GB

Database Size

Database Manager

Operating System

Other Software

Availability Date

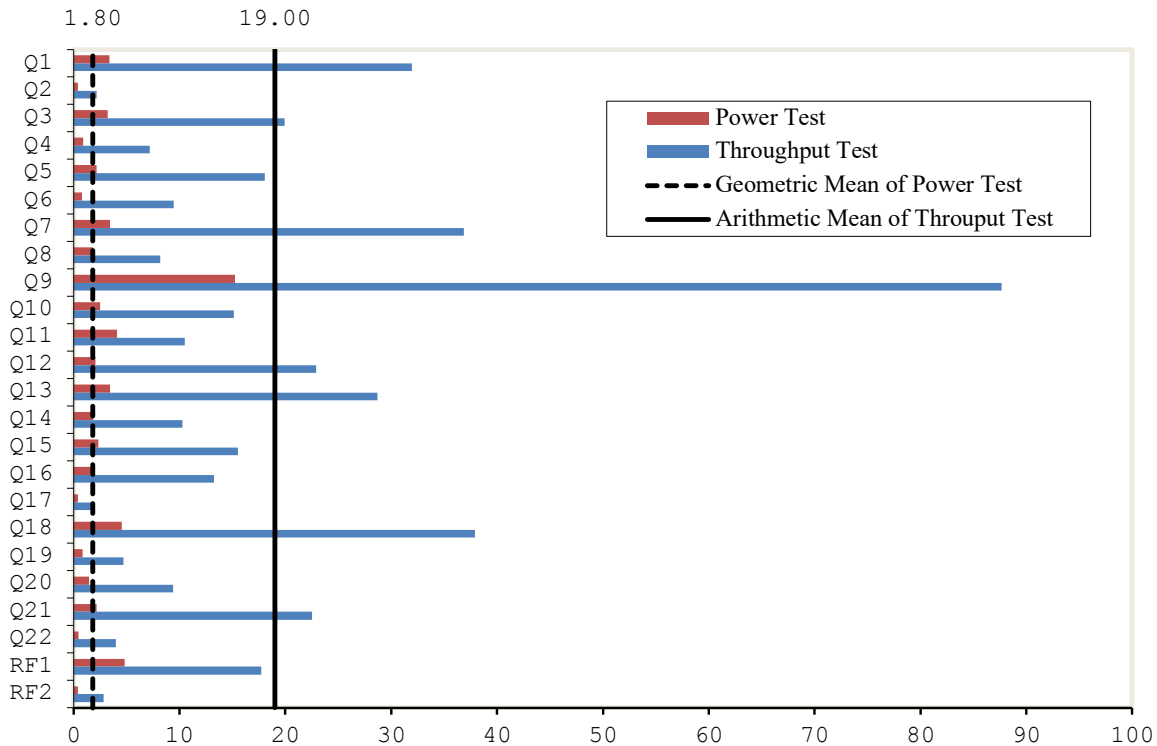
3,000GB

Exasol 6.2

CentOS 7.6

None

July 8, 2019



Database Load Time = 00d 01h 05m 44s
 Load Includes Backup: N
 Total Data Storage / Database Size = 4.67
 Memory to Database Size Percentage = 119.5%

Storage Redundancy Levels:

Base Tables	Level One
Auxiliary Data Structures	Level One
DBMS Temporary Space	Level One
OS and DBMS Software	Level One

System Configuration:

14 x Dell PowerEdge R6415 Server, each with:
 256 GB RAM
 1 x AMD EPYC™ 7551P 2.00GHz/2.55GHz processor (each 32 cores, 64 threads)
 2 x 480 GB SSD internal SSD disks
 + 1 x 1600 GB NVMe internal drive

Total Storage: 14,007 GiB



Dell PowerEdge R6415 using Exasol 6.2

TPC-H Rev. 3.0.0
TPC-Pricing Rev. 2.4.0

Report Date
April 2, 2021

Description	Part	Key	Unit Price	Qty	Ext. Price \$	3 Yr.
SERVER COMPONENTS						
PowerEdge R6415 Server						
PowerEdge R6415/R7415 Motherboard	210-ANJO	1	319.00	14	4,466.00	
No Trusted Platform Module	384-BBSR	1	0.00	14	0.00	
2.5" Chassis with up to 10 Hard Drives, including up to 8 SAS/SATA or 9 NVME Drives	461-AADZ	1	0.00	14	0.00	
PowerEdge R6415 Shipping	321-BDFY	1	100.00	14	1,400.00	
PowerEdge R6415 x4 or x10 Drive Shipping Material	340-BTFM	1	0.00	14	0.00	
AMD EPYC™ 7551P 2.00GHz/2.55GHz, 32C/64T, 64M Cache (180W) DDR4-2666	343-BBGL	1	99.00	14	1,386.00	
Standard Heatsink	338-BNCU	1	2,849.00	14	39,886.00	
2666MT/s RDIMMs	412-AALH	1	19.00	14	266.00	
Performance Optimized	370-ADNU	1	0.00	14	0.00	
Unconfigured RAID	370-AAIP	1	0.00	14	0.00	
PERC H740P RAID Controller, 8GB NV Cache, Mini card	780-BCDS	1	0.00	14	0.00	
iDRAC9,Enterprise	405-AAMS	1	1,049.00	14	14,686.00	
iDRAC Group Manager, Disabled	385-BBKT	1	489.00	14	6,846.00	
iDRAC.Factory Generated Password	379-BCQY	1	0.00	14	0.00	
Riser Config 1, 2 x 16 LP	379-BCSF	1	0.00	14	0.00	
On-Board LOM	330-BBIV	1	79.00	14	1,106.00	
No Internal Optical Drive	542-BBBP	1	0.00	14	0.00	
Dual, Hot Plug, Redundant Power Supply (1+1), 550W	429-AAIQ	1	0.00	14	0.00	
No Bezel	450-AGZB	1	559.00	14	7,826.00	
Dell EMC Luggage Tag	350-BBBW	1	0.00	14	0.00	
No Quick Sync	350-BBME	1	0.00	14	0.00	
Performance BIOS Settings	350-BBKR	1	49.00	14	686.00	
UEFI BIOS Boot Mode with GPT Partition	384-BBBL	1	0.00	14	0.00	
ReadyRails Sliding Rails With Cable Management Arm	800-BBDM	1	0.00	14	0.00	
No Systems Documentation, No OpenManage DVD Kit	770-BCKT	1	189.00	14	2,646.00	
32GB RDIMM 2666MT/s Dual Rank	631-AACK	1	0.00	14	0.00	
480GB SSD SATA Mixed Use 6Gbps 512e 2.5in Hot Plug S4610 Drive	370-ADNF	1	1,119.00	112	125,328.00	
Mellanox ConnectX-4 Lx Dual Port 25GbE SFP28 Network Adapter, LowProfile	400-ATHD	1	629.00	28	17,612.00	
C13 to C14, PDU Style, 12 AMP, 6.5 Feet (2m) Power Cord, North America	406-BBLD	1	749.00	14	10,486.00	
Dell 1.6 TB, NVMe, Mixed Use Express Flash, 2.5 SFFDrive, U.2, PM1725a with Carrier	492-BBDI	1	20.00	28	560.00	
Dell Hardware Limited Warranty Plus On-Site Service	400-AUMP	1	3,099.00	1	3,099.00	
ProSupport Mission Critical: 7x24 HW / SW Technical Support and Assistance, 3 Years	816-0779	1	200.00	14		2,800.00
ProSupport Mission Critical: 4-Hour 7x24 On-Site Service with Emergency Dispatch, 3 Years	816-0796	1	1,438.00	14		20,132.00
ProSupport Mission Critical: 4-Hour 7x24 On-Site Service with Emergency Dispatch, 3 Years	816-0784	1	262.00	14		3,668.00
OTHER HARDWARE COMPONENTS						
Dell EMC S5048F-ON Switch,48x 25GbE,6x 100GbE QSFP28, IO to PSU,2 PSU,OS10	210-ANCK	1	22,010.00	1	22,010.00	
OS10 Enterprise S5048F-ON	634-BMIF	1	0.00	1	0.00	
Dell Networking, Cable, SFP28 to SFP28, 25GbE, Passive Copper Twinax Direct Attach Cable, 2 Meter	470-ACET	1	215.00	14	3,010.00	
Dell EMC S5048 Series User Guide	343-BBFV	1	6.00	1	6.00	
Force10, Power Cord, 125V, 15A, 10 Feet, NEMA 5-15/C13, S-Series	450-AAFH	1	20.00	1	20.00	
Dell Hardware Limited Warranty 1 Year	814-8268	1	422.00	1	422.00	
Dell Limited Hardware Warranty Extended Year(s)	975-3461	1	0.00	1		0.00
Mission Critical Package: 4-Hour 7X24 On-Site Service with Emergency Dispatch, 2 Year Extended	814-8278	1	423.00	1		423.00
ProSupport: 7x24 HW / SW Tech Support and Assistance, 3 Year	814-8288	1	5,956.00	1		5,956.00
Info 3rd Party Software Warranty provided by Vendor	997-6306	1	0.00	1		0.00
Mission Critical Package: 4-Hour 7X24 On-Site Service with Emergency Dispatch, 1 Year	814-8277	1	111.00	1		111.00
APC NetShelter SX 24U 600mm x 1070mm Deep Enclosure	A7067508	1	1,129.99	1	1,129.99	
Rack PDU, Basic, Zero U, 15A, 120V, 5-15 input, (14) 5-15 output	A7541364	1	174.99	1	174.99	
Logitech MK120 Keyboard and Mouse	A6999510	1	15.99	1	15.99	
Dell 24 Monitor	210-AIWG	1	169.99	1	169.99	
Hardware Subtotal					265,243.96	33,090.00

SOFTWARE

Exasol 3TB Subscription ¹⁾	2	6,298.00	36	226,728.00	
Software Subtotal				226,728.00	
Total				491,971.96	33,090.00
Large Purchase Discount (35%) ²⁾				-92,835.39	-11,581.50

Three-Year Cost of Ownership: \$420,645
QphH@3000GB: 6,053,020
\$/kQphH@3000GB: \$ 69.50

Price Key: 1 DELL Waseem Raja
Weyman Trichel
2 Exasol Gunther Schweer sales@Exasol.com

¹⁾ Includes software (DB & OS) support 24x7

²⁾ Discount applies to all line items where Key = 1. Discount based upon total system cost as purchased by a regular customer.

Audited by Francois Raab of InfoSizing (www.sizing.com)

Prices used in TPC benchmarks reflect the actual prices a customer would pay for a one-time purchase of the stated components. Individually negotiated discounts are not permitted. Special prices based on assumptions about past or future purchases are not permitted. All discounts reflect standard pricing policies for the listed components. For complete details, see the pricing sections of the TPC benchmark specifications. If you find that the stated prices are not available according to these terms please inform the TPC at pricing@tpc.org. Thank you.



Dell PowerEdge R6415 using Exasol 6.2

TPC-H Rev. 3.0.0
TPC-Pricing Rev. 2.4.0

Report Date
April 2, 2021

Numerical Quantities

Measurement Results

Database Scale Factor	3,000 GB
Total Data Storage / Database Size	4.67
Percentage Memory / Database Size	119.5%
Start of Database Load	2019-06-18 11:45:13
End of Database Load	2019-06-18 12:50:57
Database Load Time	00d 01h 05m 44s
Query Streams for Throughput Test	12
TPC-H Power	6,001,521.8
TPC-H Throughput	6,104,961.1
TPC-H Composite Query-per-Hour Metric (QpH@3000GB)	6,053,020.5
Total System Price Over 3 Years	\$420,645
TPC-H Price/ Performance Metric (\$/kQpH@3000GB)	\$69.50

Measurement Interval

Measurement Interval in Throughput Test (Ts)	467.03 seconds
--	----------------

Duration of Stream Execution

Power Run	Seed	Query Start Time	Total Time (hh:mm:ss)	RF1 Start Time	RF2 Start Time
		Query End Time		RF1 End Time	RF2 End Time
	618125057	2019-06-18 12:59:47.87	00:00:59	2019-06-18 12:59:42.97	2019-06-18 13:00:46.97
		2019-06-18 13:00:46.96		2019-06-18 12:59:47.78	2019-06-18 13:00:47.36
Throughput Stream	Seed	Query Start Time	Total Time (hh:mm:ss)	RF1 Start Time	RF2 Start Time
		Query End Time		RF1 End Time	RF2 End Time
1	618125058	2019-06-18 13:00:47.45	00:07:40	2019-06-18 13:00:47.37	2019-06-18 13:00:58.69
		2019-06-18 13:08:27.49		2019-06-18 13:00:58.67	2019-06-18 13:00:59.94
2	618125059	2019-06-18 13:00:47.46	00:06:56	2019-06-18 13:00:59.96	2019-06-18 13:01:12.54
		2019-06-18 13:07:43.65		2019-06-18 13:01:12.50	2019-06-18 13:01:14.93
3	618125060	2019-06-18 13:00:47.48	00:06:55	2019-06-18 13:01:14.94	2019-06-18 13:01:25.65
		2019-06-18 13:07:42.50		2019-06-18 13:01:25.64	2019-06-18 13:01:27.80
4	618125061	2019-06-18 13:00:47.46	00:06:51	2019-06-18 13:01:27.81	2019-06-18 13:01:39.91
		2019-06-18 13:07:38.13		2019-06-18 13:01:39.90	2019-06-18 13:01:42.01
5	618125062	2019-06-18 13:00:47.47	00:07:47	2019-06-18 13:01:42.03	2019-06-18 13:01:55.41
		2019-06-18 13:08:34.40		2019-06-18 13:01:55.40	2019-06-18 13:01:57.91
6	618125063	2019-06-18 13:00:47.52	00:06:53	2019-06-18 13:01:57.93	2019-06-18 13:02:10.65
		2019-06-18 13:07:40.38		2019-06-18 13:02:10.64	2019-06-18 13:02:13.32
7	618125064	2019-06-18 13:00:47.56	00:06:56	2019-06-18 13:02:13.33	2019-06-18 13:02:30.00
		2019-06-18 13:07:43.09		2019-06-18 13:02:29.98	2019-06-18 13:02:33.01
8	618125065	2019-06-18 13:00:47.53	00:06:36	2019-06-18 13:02:33.03	2019-06-18 13:02:51.80
		2019-06-18 13:07:23.59		2019-06-18 13:02:51.77	2019-06-18 13:02:57.21
9	618125066	2019-06-18 13:00:47.49	00:06:53	2019-06-18 13:02:57.24	2019-06-18 13:03:18.57
		2019-06-18 13:07:40.97		2019-06-18 13:03:18.55	2019-06-18 13:03:22.89
10	618125067	2019-06-18 13:00:47.50	00:06:55	2019-06-18 13:03:22.90	2019-06-18 13:03:44.45
		2019-06-18 13:07:42.49		2019-06-18 13:03:44.44	2019-06-18 13:03:47.14
11	618125068	2019-06-18 13:00:47.54	00:06:33	2019-06-18 13:03:47.15	2019-06-18 13:04:14.81
		2019-06-18 13:07:20.63		2019-06-18 13:04:14.80	2019-06-18 13:04:17.74
12	618125069	2019-06-18 13:00:47.54	00:06:42	2019-06-18 13:04:17.75	2019-06-18 13:04:51.44
		2019-06-18 13:07:29.47		2019-06-18 13:04:51.43	2019-06-18 13:04:54.05



**Dell PowerEdge R6415
using Exasol 6.2**

TPC-H Rev. 3.0.0
TPC-Pricing Rev. 2.4.0

Report Date
April 2, 2021

TPC-H Timing Intervals (in seconds)

Stream ID	Q1	Q2	Q3	Q4	Q5	Q6	Q7	Q8	Q9	Q10	Q11	Q12
0	3.36	0.41	3.21	0.88	2.15	0.80	3.44	1.81	15.25	2.51	4.08	2.08
1	6.46	0.70	34.74	1.58	37.39	19.60	61.81	2.36	22.92	4.04	13.95	46.71
2	36.44	3.06	18.00	6.20	20.03	7.84	31.12	11.30	103.61	17.46	8.64	26.85
3	35.12	2.32	15.53	6.99	19.39	7.32	31.01	10.51	109.33	16.32	9.12	19.38
4	34.88	2.36	16.52	6.26	20.02	7.15	28.52	10.06	104.24	17.94	9.95	22.75
5	5.74	0.66	4.54	15.97	4.09	21.04	73.52	2.95	19.84	4.35	16.62	4.29
6	34.59	2.16	20.81	7.65	17.57	7.08	33.58	8.19	111.32	18.09	10.40	20.80
7	37.91	2.48	20.87	6.90	16.59	7.43	31.53	8.44	115.62	17.29	10.00	14.78
8	39.18	2.41	20.94	7.20	18.04	6.30	32.99	7.90	84.79	15.28	8.76	23.88
9	42.48	2.47	22.20	7.80	13.20	7.09	30.93	10.68	96.10	18.20	10.68	21.72
10	35.22	2.80	22.18	5.12	12.11	8.00	31.79	6.28	102.01	19.00	9.03	25.01
11	36.93	2.28	23.69	8.26	21.58	6.52	25.53	9.36	80.61	17.33	8.94	24.29
12	38.29	2.42	18.87	6.51	16.79	7.67	30.07	10.24	101.48	16.25	9.58	24.03
Qi Min	3.36	0.41	3.21	0.88	2.15	0.80	3.44	1.81	15.25	2.51	4.08	2.08
Qi Avg	29.74	2.04	18.62	6.72	16.84	8.76	34.30	7.70	82.09	14.16	9.98	21.27
Qi Max	42.48	3.06	34.74	15.97	37.39	21.04	73.52	11.30	115.62	19.00	16.62	46.71

Stream ID	Q13	Q14	Q15	Q16	Q17	Q18	Q19	Q20	Q21	Q22	RF1	RF2
0	3.42	1.86	2.32	1.65	0.40	4.51	0.82	1.45	2.18	0.46	4.81	0.39
1	21.31	2.44	28.79	25.29	4.15	66.87	0.96	23.54	33.63	0.79	11.30	1.26
2	27.97	10.65	15.79	9.91	1.93	29.20	3.94	8.74	13.45	4.04	12.55	2.39
3	28.92	11.17	11.38	9.65	1.60	31.17	5.13	9.07	20.28	4.30	10.70	2.15
4	29.44	9.74	13.74	11.60	1.66	27.28	4.09	7.57	21.91	2.99	12.09	2.10
5	25.55	27.03	28.35	37.94	0.57	109.67	15.05	2.73	38.09	8.33	13.37	2.50
6	30.84	8.28	13.72	9.55	1.39	27.41	3.25	7.57	15.30	3.29	12.71	2.67
7	28.30	8.38	10.39	9.56	1.39	28.85	4.08	8.99	22.19	3.57	16.65	3.01
8	28.04	10.03	13.66	9.87	1.85	26.08	5.39	8.70	21.45	3.32	18.74	5.41
9	30.90	7.99	14.45	7.40	1.87	29.09	4.35	9.54	20.15	4.20	21.32	4.32
10	33.81	9.87	13.75	9.29	2.17	26.91	3.58	8.71	24.07	4.31	21.54	2.69
11	30.17	9.90	13.36	9.09	2.08	26.09	3.29	9.30	19.67	4.81	27.65	2.93
12	28.75	7.76	9.01	10.14	1.61	26.43	3.52	8.49	20.16	3.86	33.68	2.62
Qi Min	3.42	1.86	2.32	1.65	0.40	4.51	0.82	1.45	2.18	0.46	4.81	0.39
Qi Avg	26.72	9.62	14.52	12.38	1.74	35.35	4.42	8.80	20.96	3.71	16.70	2.65
Qi Max	33.81	27.03	28.79	37.94	4.15	109.67	15.05	23.54	38.09	8.33	33.68	5.41