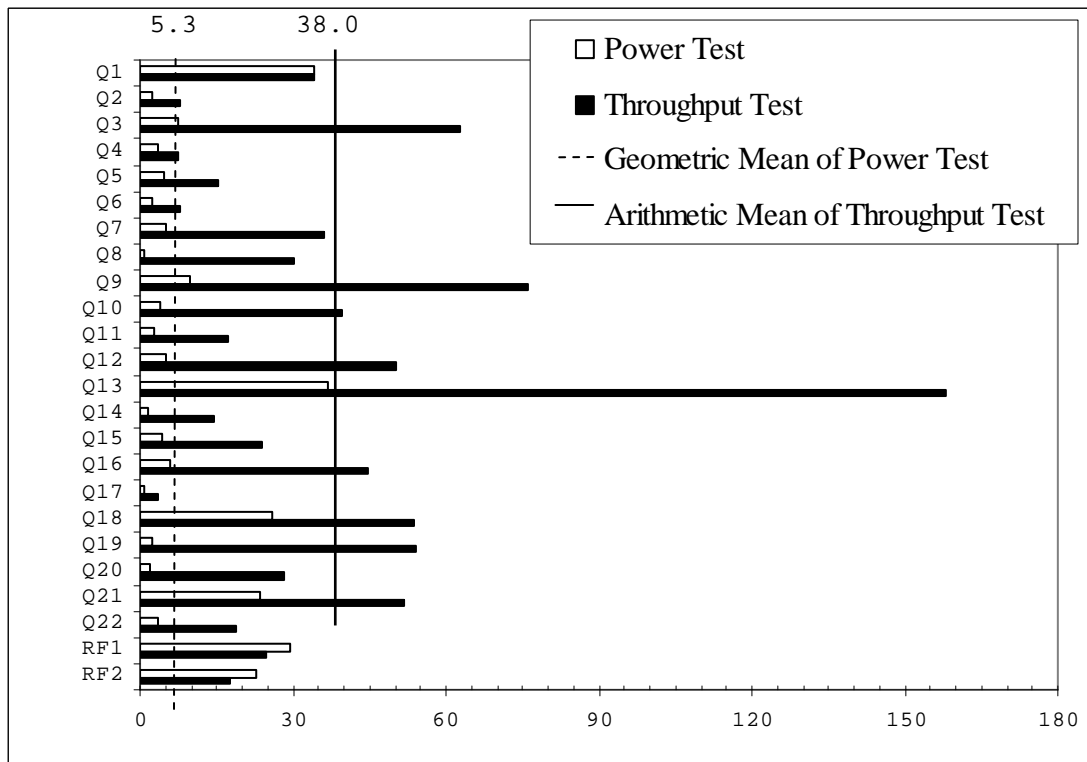
	Kickfire™ Appliance 2300 with MySQL Database		TPC-H Rev. 2.6.2	
			Report Date: April 14, 2008	
Total System Cost		Composite Query Per Hour Metric		Price/Performance
\$34,425		49,228.6		\$0.70
Database Size	Database Manager	Operating System	Other Software	Availability Date
100GB	MySQL5.1 with Kickfire database	CentOS 5.0	None	October 14, 2008



Database Load Time 00:59:14	Load Included Backup: N	Total Data Storage / Database Size = 5.44
RAID (Base tables only): N	RAID (Base tables and auxiliary data structures): N	RAID (All): Y

System Configuration:

- 1 x Kickfire Base Server Module, with:
 - 2 Intel Xeon E5440 2.83GHz processors (each is 1 chip, 4 cores, 4 threads)
 - 16 GB RAM
 - 8 x 73 GB (15K RPM) internal SAS disks
- 1 x Kickfire Query Processing Module, with 64 GB RAM

Total Storage: 544 GB
(1 GB = 2³⁰ bytes)



**Kickfire™ Appliance 2300
with MySQL Database**

TPC-H Rev. 2.6.2

Report Date: April 14, 2008

Description	Part No.	Src	Unit Price	Qty	Ext. Price	3 Yr. Main.
<p><i>Kickfire Database Appliance Series 2300</i> Includes: BSM: 2-CPU's, 16 GB RAM, 8 X 73GB 15K RPM SAS Drives QPM: 64GB RAM, SQL Chip MySQLEnterprise v5.1, KickfireDB v1.0, Kickfire Utilities</p> <p><i>Kickfire Discount (18%)</i> discount K2300-0001 (includes Net 30)</p> <p><i>Kickfire 3 Year, 24X7, 4Hr. H/W Basic Support</i> Includes: Kickfire and MySQL S/W support</p> <p>Total 3 Yr Cost in USD</p> <p><i>QphH @ 100GB</i> <i>USD\$/QphH @ 100GB</i></p> <p>Source: 1 – Kickfire Inc.</p> <p>Price available by contacting Kickfire Sales at sales@kickfire.com or (408) 450-5400</p>	K2300-0001	1	\$40,500	1	\$40,500	
					(\$7,290)	
	KS0000-1001	1	\$1,215	1		\$1,215
					\$33,210	\$1,215
					\$34,425	
					49,228.6	
					0.70	

Audited by: Lorna Livingtree of Performance Metrics Inc.

Prices used in TPC benchmarks reflect the actual prices a customer would pay for a one-time purchase of the stated components. Individually negotiated discounts are not permitted. Special prices based on assumptions about past or future purchases are not permitted. All discounts reflect standard pricing policies for the listed components. For complete details, see the pricing sections of the TPC benchmark specifications.



**Kickfire™ Appliance 2300
with MySQL Database**

TPC-H Rev. 2.6.2

Report Date: April 14, 2008

Numerical Quantities

Measurement Results

Database Scale Factor	= 100GB
Total Data Storage/Database Size	= 5.44
Start of database load time	= 17:37:56 04/05/08
End of database load time	= 18:37:10 04/05/08
Database load time	= 00:59:14
Query streams for throughput test	= 5
TPC-H Power	= 67485.3
TPC-H Throughput	= 35910.9
TPC-H Composite Query-per-hour rating (QphH@100GB)	= 49228.6
Total System price over 3 years	= \$34,425
TPC-H Price/Performance metric (\$/QphH@100GB)	= \$0.70 USD

Measurement Intervals

Measurement interval in Throughput test (Ts)	= 1102.7 seconds
---	------------------

Duration of Stream Execution

Stream ID	Seed	Start Date	Start Time	End Date	End Time	Duration
Stream 0	405183710	04/05/08	18:38:07	04/05/08	18:42:08	4min:01sec
Stream 1	405183711	04/05/08	18:42:08	04/05/08	18:56:58	14min:50sec
Stream 2	405183712	04/05/08	18:42:08	04/05/08	18:56:31	14min:23sec
Stream 3	405183713	04/05/08	18:42:08	04/05/08	18:55:19	13min:11sec
Stream 4	405183714	04/05/08	18:42:08	04/05/08	18:55:26	13min:18sec
Stream 5	405183715	04/05/08	18:42:08	04/05/08	18:56:04	13min:56sec
Refresh		04/05/08	18:56:58	04/05/08	19:00:31	3min:33sec



**Kickfire™ Appliance 2300
with MySQL Database**

TPC-H Rev. 2.6.2

Report Date: April 14, 2008

TPC-H Timing Intervals (in seconds)

Stream ID	Q1	Q2	Q3	Q4	Q5	Q6	Q7	Q8	Q9	Q10	Q11	Q12
Stream 00	34.1	2.2	7.5	3.6	4.6	2.3	5.1	0.8	9.9	4.0	2.7	5.0
Stream 01	33.0	3.0	94.6	3.3	44.4	8.0	33.3	91.3	16.5	118.4	18.4	82.5
Stream 02	34.2	11.6	22.8	18.5	10.4	11.4	34.2	23.1	245.4	65.9	3.8	6.5
Stream 03	32.8	10.5	25.3	6.9	6.5	6.2	40.6	12.0	93.0	4.5	54.1	82.6
Stream 04	37.4	7.5	8.7	4.3	6.5	9.8	67.0	2.3	17.3	4.7	6.8	62.8
Stream 05	33.5	7.5	162.4	3.7	8.4	4.5	5.1	23.0	8.3	3.7	2.9	16.1
Minimum	32.8	2.2	7.5	3.3	4.6	2.3	5.1	0.8	8.3	3.7	2.7	5.0
Average	34.2	7.0	53.6	6.7	13.5	7.0	30.9	25.4	65.1	33.5	14.8	42.6
Maximum	37.4	11.6	162.4	18.5	44.4	11.4	67.0	91.3	245.4	118.4	54.1	82.6

Stream ID	Q13	Q14	Q15	Q16	Q17	Q18	Q19	Q20	Q21	Q22	RF1	RF2
Stream 00	36.8	1.5	4.4	5.9	0.6	26.0	2.2	2.1	23.6	3.7	29.6	22.6
Stream 01	148.9	15.9	8.2	13.9	4.3	59.3	20.2	6.0	58.7	8.6	30.0	25.1
Stream 02	130.3	2.3	10.6	9.0	5.9	65.3	4.0	71.6	38.5	37.9	22.4	13.9
Stream 03	127.0	42.0	20.6	56.2	2.5	74.9	0.6	4.6	52.1	36.1	25.7	17.6
Stream 04	151.2	6.1	46.9	5.9	3.5	34.3	199.7	48.6	63.3	3.7	22.0	15.0
Stream 05	232.3	6.0	33.8	138.7	1.8	34.4	45.5	9.8	46.6	8.3	24.2	16.3
Minimum	36.8	1.5	4.4	5.9	0.6	26.0	0.6	2.1	23.6	3.7	22.0	13.9
Average	137.8	12.3	20.8	38.3	3.1	49.0	45.4	23.8	47.1	16.4	25.7	18.4
Maximum	232.3	42.0	46.9	138.7	5.9	74.9	199.7	71.6	63.3	37.9	30.0	25.0