



# SPARC Enterprise M9000 Server with Oracle Database 11g Release 2

TPC-H Rev. 2.14.0  
TPC-Pricing 1.6.0

Report Date: March 22, 2011  
Revised: September 14, 2011

Total System Cost

Composite Query per Hour Metric

Price / Performance

**\$7,030,009 USD**

**386,478.3 QphH@3000GB**

**\$18.19/QphH@3000GB**

Database Size

Database Manager

Operating System

Other Software

Availability Date

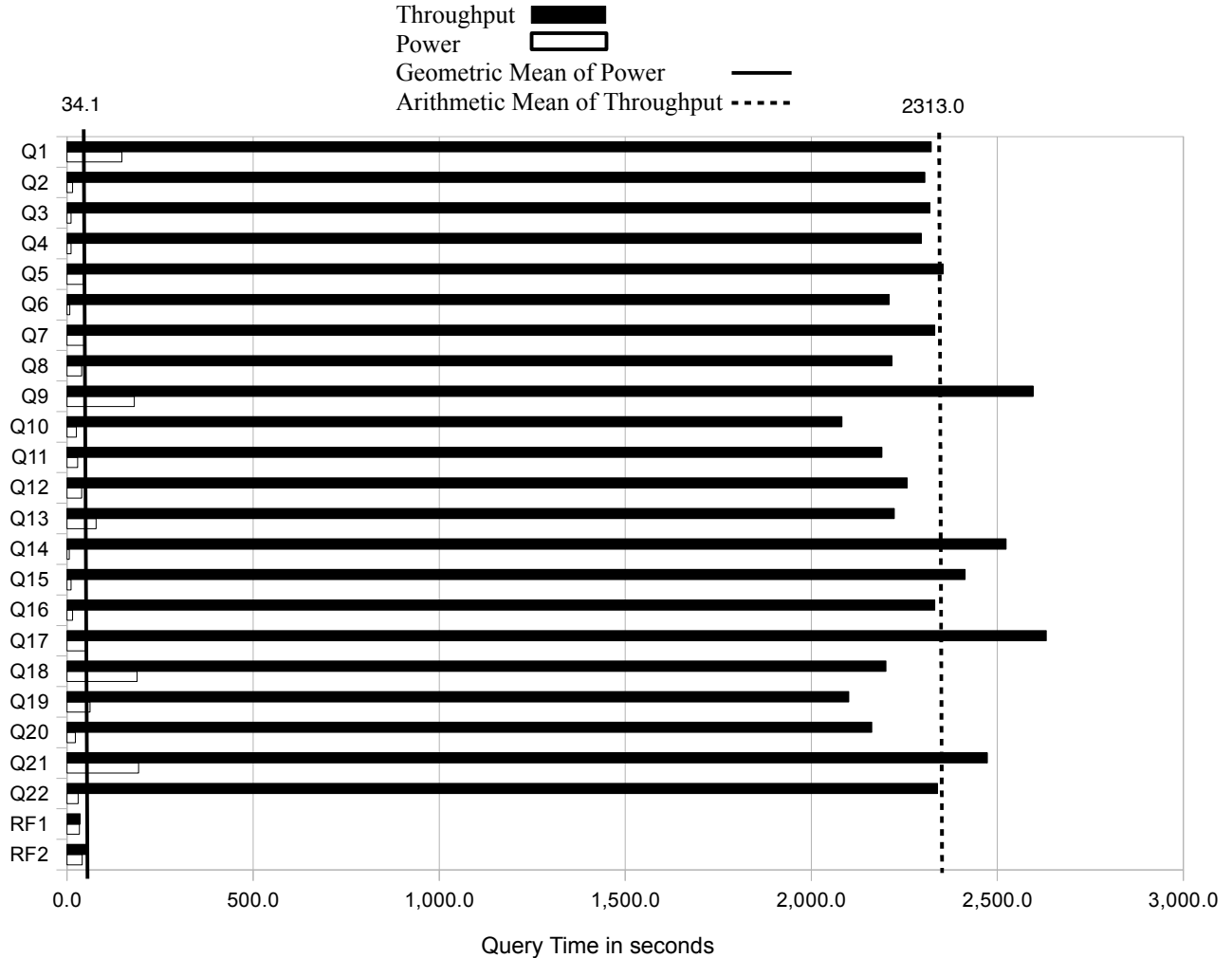
3000GB

Oracle Database 11g Release 2  
Enterprise Edition with  
Partitioning

Solaris 10 9/10

None

September 22, 2011



Database Load Time = 2:59:01  
 Load Includes Backup: N  
 Total Data Storage / Database Size = 102.9  
 Memory to Database Size Percentage = 34.1

Storage Redundancy Levels:  
 Base Tables: Level Three  
 Auxiliary Data Structures: Level Three  
 DBMS Temporary Space: Level Zero  
 OS and DBMS Software: Level One

System Configuration:

Processors:

Memory:

Disks:

Total Storage:

SPARC Enterprise M9000 Server  
 64 SPARC64 VII+ 3000 MHz Processors, 256 cores, 256 threads  
 1024GB  
 32 Sun Storage 6180 Arrays w/ 16 600GB 15K RPM disks each  
 4 300GB 10K SAS Internal  
 308,800GB (GB = 1024\*1024\*1024 bytes)



# SPARC Enterprise M9000 Server with Oracle Database 11g Release 2

**TPC-H Rev. 2.14.0**  
**TPC-Pricing 1.6.0**

**Report Date:** March 22, 2011  
**Revised:** September 14, 2011

Description	Part Number	Source	Unit Price	Qty	Ext. Price	3 Yr. Maint.
<b>Server Hardware</b>						
Sun SE M9000-64 Base 1ph	SEJASY12Z	1	1,523,087	1	1,523,087	
SE_CMU:4*SPARCVII+ 3.0w/64GB	SEMY4KE1Z	1	200,192	16	3,203,072	
SE_PCI_E IO Unit: 8*slots	7101643	1	59,520	16	952,320	
PWR Cord 1PHs M8000-9000 USA	SEMXP31Z-N	1	3,039	10	30,390	
PCI-E Base IO Card	SEMXP7BS1Z-N	1	3,840	2	7,680	
300GB 10K RPM 2.5" SAS Disk	SEMXP3C11Z-N	1S	1,481	4	5,924	
8GB PCIe FC Dual Host Bus Adapter, qllogic	SG-XPCIE2FC-QF8-Z-N	1	2,399	64	153,536	
Sun Fire X4170 M2 Server	X4170M2-H1-AA	1	2,699	1	2,699	
Oracle Solaris 10 Pre-Install	5894A-N	1	0	1	0	
US PC Peripheral Kit (Keyboard/Mouse)	3701A-PC	1	50	1	50	
Express Slide Rail Kit	6326A-N	1	150	1	150	
4GB (1x4GB) DDR3-1333	4910A	1	255	2	510	
6 Gb/s SAS HBA, Internal ATO	SG-SAS6-INT-Z	1	419	1	419	
300GB 10K RPM 2.5" SAS Disk	RB-SS2CF-300G10K-N	1	689	1	689	
DVD+/-RW SATA-based drive ATO	8325A-N	1	145	1	145	
1 x Intel Xeon E5620 ATO	5924A	1	599	1	599	
X4170 CPU Heatsink, XATO	5879A-N	1	0	1	0	
17" TFT Monitor	X7204A-N	1	219	1	219	
<b>Server Hardware Subtotal</b>					<b>5,881,489</b>	<b>0</b>
<b>Storage</b>						
Sun Storage 6180 4GB cache 4 FC ports	TB6180R11A2-0-N	1	19,595	32	627,040	
Storage 6XXX 600GB15K FC-HDD	XTC-FC1CF600G15K-N	1	4,695	512	2,403,840	
Sun Storage 6180 Rack Rail Kit	XTA6000-RK2-RAIL	1	175	32	5,600	
Jumper Cable Kit: 1 x 1m C13	XSR-JUMP-1MC13	1	29	64	1,856	
15M Fibre Channel Cable	X9734A-Z-N	1	105	64	6,720	
Sun Rack II 42U	XSR-1242E	1	2,849	3	8,547	
PDU 15kVA, Single Phase, LV	XSR-15K-L630	1	1,200	6	7,200	
<b>Storage Subtotal</b>					<b>3,060,803</b>	<b>0</b>
<b>Server Software</b>						
Oracle Solaris 10 9/10 Pre-install	SOLZS-10M9A9S-FI-N	1	0	1	0	
Oracle Solaris Studio 12		1	0	1	0	
Oracle Solaris Studio 12 Support, Named User	B59320	1	1,200	3		3,600
Oracle Database 11g Release 2 Enterprise Edition, Named User Plus for 3 years (for 128 processors)		1	11,875	128	1,520,000	
Partitioning, Named User Plus for 3 years (for 128 processors)		1	2,875	128	368,000	
Incident Server Support for 3 years		1	2,300	3		6,900
<b>Server Software Subtotal</b>					<b>1,888,000</b>	<b>10,500</b>
Oracle Premier Hardware Support	Q-PREM-SPRT-SYS	1	1,073,075	3		3,219,225
<b>Total</b>					<b>10,830,292</b>	<b>3,229,725</b>
Total Oracle Software, Hardware and Maintenance Discount		1			(7,030,009)	
<b>Notes (Source):</b>					<b>3 Yr. Cost</b>	<b>\$7,030,009</b>
1. Oracle Corp.					<b>QpH @3000GB</b>	<b>386,478.3</b>
S. Substituted Component					<b>S/QpH @3000GB</b>	<b>\$18.19</b>

**Audited by Francois Raab of InfoSizing, Inc.**

Oracle's discounts are based upon US list prices and for similar quantities and configurations. A discount of 50% has been applied to all Oracle hardware, software and services based on the total value and quantities of the components of the configuration, including full payment of all components and maintenance.

Prices used in TPC Benchmarks reflect the actual prices a customer would pay for a one-time purchase of the stated components. Individually negotiated discounts are not permitted. Special prices based on assumptions about past or future purchases are not permitted. All discounts reflect standard pricing policies for the listed components. For complete details, see the pricing section of the TPC benchmark specifications. If you find that stated prices are not available according to these terms, please inform the TPC at pricing@tpc.org. Thank you.



**SPARC Enterprise M9000  
Server with Oracle Database  
11g Release 2**

TPC-H Rev. 2.14.0  
TPC-Pricing 1.6.0

Report Date: March 22, 2011  
Revised: September 14, 2011

**Numerical Quantities**

**Measurement Results:**

Database Scale Factor	= 3000GB
Total Data Storage / Database Size	= 102.9
Start of database load time	= 02-13-2011 14:37:57
End of database load time	= 02-13-2011 17:36:58
Database Load Time	= 2:59:01
Query Streams for Throughput Test	= 128
TPC-H Power	= 316,835.8
TPC-H Throughput	= 471,428.6
TPC-H Composite Query-per-Hour Rating (QphH@3000GB)	= 386,478.3
Total System Price Over 3 Years	= \$7,030,009
TPC-H Price/Performance Metric (\$/QphH@3000GB)	= \$18.19

**Measurement Intervals:**

Measurement Interval in Throughput Test (Ts) = 64,512 seconds

**Duration of Stream Execution:**

Power Run	Seed	RF1 Start RF1 End	Query Start Query End	RF2 Start RF2 End	Duration
	0213173658	02/14/2011 11:12:56	02/14/2011 11:13:29	02/14/2011 11:34:19	00:22:04
		02/14/2011 11:13:29	02/14/2011 11:34:19	02/14/2011 11:35:00	

Throughput Stream	Seed	Query Start Query End	Duration	RF1 Start RF1 End	RF2 Start RF2 End
1	0213173659	02/14/2011 11:35:11	13:42:38	02/15/2011 02:20:58	02/15/2011 02:21:34
		02/15/2011 01:17:50		02/15/2011 02:21:34	02/15/2011 02:22:21
2	0213173660	02/14/2011 11:35:12	13:40:51	02/15/2011 02:22:21	02/15/2011 02:22:59
		02/15/2011 01:16:02		02/15/2011 02:22:59	02/15/2011 02:23:54
3	0213173661	02/14/2011 11:35:12	13:40:21	02/15/2011 02:23:54	02/15/2011 02:24:29
		02/15/2011 01:15:32		02/15/2011 02:24:29	02/15/2011 02:25:26
4	0213173662	02/14/2011 11:35:12	13:42:26	02/15/2011 02:25:26	02/15/2011 02:26:08
		02/15/2011 01:17:38		02/15/2011 02:26:08	02/15/2011 02:26:59
5	0213173663	02/14/2011 11:35:12	13:42:38	02/15/2011 02:26:59	02/15/2011 02:27:36
		02/15/2011 01:17:50		02/15/2011 02:27:36	02/15/2011 02:28:28
6	0213173664	02/14/2011 11:35:12	13:39:46	02/15/2011 02:28:28	02/15/2011 02:29:03
		02/15/2011 01:14:58		02/15/2011 02:29:03	02/15/2011 02:29:56
7	0213173665	02/14/2011 11:35:12	13:59:57	02/15/2011 02:29:56	02/15/2011 02:30:34
		02/15/2011 01:35:09		02/15/2011 02:30:34	02/15/2011 02:31:31
8	0213173666	02/14/2011 11:35:12	13:42:38	02/15/2011 02:31:31	02/15/2011 02:32:05
		02/15/2011 01:17:50		02/15/2011 02:32:05	02/15/2011 02:33:01
9	0213173667	02/14/2011 11:35:12	13:40:23	02/15/2011 02:33:01	02/15/2011 02:33:39
		02/15/2011 01:15:35		02/15/2011 02:33:39	02/15/2011 02:34:31
10	0213173668	02/14/2011 11:35:12	13:42:23	02/15/2011 02:34:31	02/15/2011 02:35:05
		02/15/2011 01:17:35		02/15/2011 02:35:05	02/15/2011 02:35:56

Throughput Stream	Seed	Query Start Query End	Duration	RF1 Start RF1 End	RF2 Start RF2 End
11	0213173669	02/14/2011 11:35:12	13:40:50	02/15/2011 02:35:56	02/15/2011 02:36:30
		02/15/2011 01:16:02		02/15/2011 02:36:30	02/15/2011 02:37:24
12	0213173670	02/14/2011 11:35:12	13:42:23	02/15/2011 02:37:24	02/15/2011 02:37:59
		02/15/2011 01:17:35		02/15/2011 02:37:59	02/15/2011 02:38:54
13	0213173671	02/14/2011 11:35:12	13:45:39	02/15/2011 02:38:54	02/15/2011 02:39:33
		02/15/2011 01:20:51		02/15/2011 02:39:33	02/15/2011 02:40:26
14	0213173672	02/14/2011 11:35:12	13:42:38	02/15/2011 02:40:26	02/15/2011 02:41:04
		02/15/2011 01:17:50		02/15/2011 02:41:04	02/15/2011 02:41:58
15	0213173673	02/14/2011 11:35:12	13:42:23	02/15/2011 02:41:58	02/15/2011 02:42:35
		02/15/2011 01:17:35		02/15/2011 02:42:35	02/15/2011 02:43:24
16	0213173674	02/14/2011 11:35:12	13:44:46	02/15/2011 02:43:24	02/15/2011 02:44:02
		02/15/2011 01:19:58		02/15/2011 02:44:02	02/15/2011 02:44:58
17	0213173675	02/14/2011 11:35:12	13:45:20	02/15/2011 02:44:58	02/15/2011 02:45:31
		02/15/2011 01:20:33		02/15/2011 02:45:31	02/15/2011 02:46:26
18	0213173676	02/14/2011 11:35:12	13:43:29	02/15/2011 02:46:26	02/15/2011 02:47:00
		02/15/2011 01:18:42		02/15/2011 02:47:00	02/15/2011 02:47:50
19	0213173677	02/14/2011 11:35:12	13:43:16	02/15/2011 02:47:50	02/15/2011 02:48:24
		02/15/2011 01:18:29		02/15/2011 02:48:24	02/15/2011 02:49:14
20	0213173678	02/14/2011 11:35:12	13:47:03	02/15/2011 02:49:14	02/15/2011 02:49:54
		02/15/2011 01:22:16		02/15/2011 02:49:54	02/15/2011 02:50:47
21	0213173679	02/14/2011 11:35:12	13:43:17	02/15/2011 02:50:48	02/15/2011 02:51:22
		02/15/2011 01:18:29		02/15/2011 02:51:22	02/15/2011 02:52:11
22	0213173680	02/14/2011 11:35:13	13:55:22	02/15/2011 02:52:11	02/15/2011 02:52:44
		02/15/2011 01:30:35		02/15/2011 02:52:44	02/15/2011 02:53:39
23	0213173681	02/14/2011 11:35:13	13:43:29	02/15/2011 02:53:39	02/15/2011 02:54:16
		02/15/2011 01:18:41		02/15/2011 02:54:16	02/15/2011 02:55:08
24	0213173682	02/14/2011 11:35:13	13:53:51	02/15/2011 02:55:08	02/15/2011 02:55:46
		02/15/2011 01:29:04		02/15/2011 02:55:46	02/15/2011 02:56:41
25	0213173683	02/14/2011 11:35:13	13:50:43	02/15/2011 02:56:42	02/15/2011 02:57:19
		02/15/2011 01:25:56		02/15/2011 02:57:19	02/15/2011 02:58:09
26	0213173684	02/14/2011 11:35:13	13:44:46	02/15/2011 02:58:09	02/15/2011 02:58:45
		02/15/2011 01:19:59		02/15/2011 02:58:45	02/15/2011 02:59:35
27	0213173685	02/14/2011 11:35:13	13:45:42	02/15/2011 02:59:35	02/15/2011 03:00:12
		02/15/2011 01:20:55		02/15/2011 03:00:12	02/15/2011 03:01:07
28	0213173686	02/14/2011 11:35:13	13:45:12	02/15/2011 03:01:07	02/15/2011 03:01:41
		02/15/2011 01:20:25		02/15/2011 03:01:40	02/15/2011 03:02:31
29	0213173687	02/14/2011 11:35:13	13:55:11	02/15/2011 03:02:31	02/15/2011 03:03:03
		02/15/2011 01:30:23		02/15/2011 03:03:03	02/15/2011 03:03:54
30	0213173688	02/14/2011 11:35:13	13:55:53	02/15/2011 03:03:55	02/15/2011 03:04:27
		02/15/2011 01:31:06		02/15/2011 03:04:27	02/15/2011 03:05:20
31	0213173689	02/14/2011 11:35:13	13:56:39	02/15/2011 03:05:20	02/15/2011 03:05:56
		02/15/2011 01:31:52		02/15/2011 03:05:56	02/15/2011 03:06:53
32	0213173690	02/14/2011 11:35:13	13:55:34	02/15/2011 03:06:53	02/15/2011 03:07:27
		02/15/2011 01:30:47		02/15/2011 03:07:27	02/15/2011 03:08:19
33	0213173691	02/14/2011 11:35:13	13:50:46	02/15/2011 03:08:19	02/15/2011 03:08:52
		02/15/2011 01:25:59		02/15/2011 03:08:52	02/15/2011 03:09:48
34	0213173692	02/14/2011 11:35:13	13:55:45	02/15/2011 03:09:48	02/15/2011 03:10:24
		02/15/2011 01:30:58		02/15/2011 03:10:24	02/15/2011 03:11:23
35	0213173693	02/14/2011 11:35:13	13:54:33	02/15/2011 03:11:23	02/15/2011 03:11:57
		02/15/2011 01:29:46		02/15/2011 03:11:57	02/15/2011 03:12:54
36	0213173694	02/14/2011 11:35:13	13:55:37	02/15/2011 03:12:54	02/15/2011 03:13:33

Throughput Stream	Seed	Query Start Query End	Duration	RF1 Start RF1 End	RF2 Start RF2 End
		02/15/2011 01:30:50		02/15/2011 03:13:33	02/15/2011 03:14:22
37	0213173695	02/14/2011 11:35:13	13:55:01	02/15/2011 03:14:22	02/15/2011 03:15:02
		02/15/2011 01:30:14		02/15/2011 03:15:02	02/15/2011 03:15:57
38	0213173696	02/14/2011 11:35:13	14:02:05	02/15/2011 03:15:58	02/15/2011 03:16:34
		02/15/2011 01:37:18		02/15/2011 03:16:34	02/15/2011 03:17:27
39	0213173697	02/14/2011 11:35:13	14:01:29	02/15/2011 03:17:27	02/15/2011 03:18:08
		02/15/2011 01:36:43		02/15/2011 03:18:08	02/15/2011 03:19:04
40	0213173698	02/14/2011 11:35:14	13:53:13	02/15/2011 03:19:04	02/15/2011 03:19:41
		02/15/2011 01:28:27		02/15/2011 03:19:41	02/15/2011 03:20:38
41	0213173699	02/14/2011 11:35:14	13:53:15	02/15/2011 03:20:38	02/15/2011 03:21:15
		02/15/2011 01:28:29		02/15/2011 03:21:15	02/15/2011 03:22:06
42	0213173700	02/14/2011 11:35:14	14:08:50	02/15/2011 03:22:07	02/15/2011 03:22:41
		02/15/2011 01:44:03		02/15/2011 03:22:41	02/15/2011 03:23:28
43	0213173701	02/14/2011 11:35:14	13:54:33	02/15/2011 03:23:28	02/15/2011 03:24:07
		02/15/2011 01:29:46		02/15/2011 03:24:07	02/15/2011 03:25:03
44	0213173702	02/14/2011 11:35:14	13:45:12	02/15/2011 03:25:03	02/15/2011 03:25:36
		02/15/2011 01:20:25		02/15/2011 03:25:36	02/15/2011 03:26:33
45	0213173703	02/14/2011 11:35:14	13:47:46	02/15/2011 03:26:33	02/15/2011 03:27:07
		02/15/2011 01:22:59		02/15/2011 03:27:07	02/15/2011 03:28:02
46	0213173704	02/14/2011 11:35:14	14:06:56	02/15/2011 03:28:02	02/15/2011 03:28:38
		02/15/2011 01:42:10		02/15/2011 03:28:38	02/15/2011 03:29:30
47	0213173705	02/14/2011 11:35:14	14:08:12	02/15/2011 03:29:30	02/15/2011 03:30:04
		02/15/2011 01:43:26		02/15/2011 03:30:04	02/15/2011 03:31:00
48	0213173706	02/14/2011 11:35:14	14:06:33	02/15/2011 03:31:00	02/15/2011 03:31:33
		02/15/2011 01:41:47		02/15/2011 03:31:33	02/15/2011 03:32:27
49	0213173707	02/14/2011 11:35:14	13:58:52	02/15/2011 03:32:27	02/15/2011 03:33:00
		02/15/2011 01:34:06		02/15/2011 03:33:00	02/15/2011 03:33:54
50	0213173708	02/14/2011 11:35:14	13:56:10	02/15/2011 03:33:54	02/15/2011 03:34:27
		02/15/2011 01:31:24		02/15/2011 03:34:27	02/15/2011 03:35:21
51	0213173709	02/14/2011 11:35:14	13:58:02	02/15/2011 03:35:21	02/15/2011 03:35:56
		02/15/2011 01:33:16		02/15/2011 03:35:56	02/15/2011 03:36:49
52	0213173710	02/14/2011 11:35:14	13:43:27	02/15/2011 03:36:49	02/15/2011 03:37:26
		02/15/2011 01:18:41		02/15/2011 03:37:26	02/15/2011 03:38:23
53	0213173711	02/14/2011 11:35:14	13:58:11	02/15/2011 03:38:23	02/15/2011 03:38:59
		02/15/2011 01:33:25		02/15/2011 03:38:59	02/15/2011 03:39:48
54	0213173712	02/14/2011 11:35:14	13:53:19	02/15/2011 03:39:48	02/15/2011 03:40:23
		02/15/2011 01:28:34		02/15/2011 03:40:23	02/15/2011 03:41:14
55	0213173713	02/14/2011 11:35:14	14:06:54	02/15/2011 03:41:14	02/15/2011 03:41:49
		02/15/2011 01:42:08		02/15/2011 03:41:49	02/15/2011 03:42:40
56	0213173714	02/14/2011 11:35:14	13:50:45	02/15/2011 03:42:40	02/15/2011 03:43:19
		02/15/2011 01:25:59		02/15/2011 03:43:19	02/15/2011 03:44:12
57	0213173715	02/14/2011 11:35:14	14:06:54	02/15/2011 03:44:12	02/15/2011 03:44:48
		02/15/2011 01:42:08		02/15/2011 03:44:48	02/15/2011 03:45:40
58	0213173716	02/14/2011 11:35:14	13:57:46	02/15/2011 03:45:40	02/15/2011 03:46:17
		02/15/2011 01:33:01		02/15/2011 03:46:17	02/15/2011 03:47:15
59	0213173717	02/14/2011 11:35:14	14:02:34	02/15/2011 03:47:15	02/15/2011 03:47:50
		02/15/2011 01:37:48		02/15/2011 03:47:50	02/15/2011 03:48:40
60	0213173718	02/14/2011 11:35:14	13:54:32	02/15/2011 03:48:40	02/15/2011 03:49:21
		02/15/2011 01:29:46		02/15/2011 03:49:20	02/15/2011 03:50:15
61	0213173719	02/14/2011 11:35:15	14:04:04	02/15/2011 03:50:15	02/15/2011 03:50:49
		02/15/2011 01:39:18		02/15/2011 03:50:48	02/15/2011 03:51:38

Throughput Stream	Seed	Query Start Query End	Duration	RF1 Start RF1 End	RF2 Start RF2 End
62	0213173720	02/14/2011 11:35:15	14:00:38	02/15/2011 03:51:38	02/15/2011 03:52:11
		02/15/2011 01:35:53		02/15/2011 03:52:11	02/15/2011 03:53:03
63	0213173721	02/14/2011 11:35:15	13:58:00	02/15/2011 03:53:03	02/15/2011 03:53:36
		02/15/2011 01:33:15		02/15/2011 03:53:36	02/15/2011 03:54:23
64	0213173722	02/14/2011 11:35:15	14:08:32	02/15/2011 03:54:23	02/15/2011 03:54:59
		02/15/2011 01:43:47		02/15/2011 03:54:59	02/15/2011 03:55:52
65	0213173723	02/14/2011 11:35:15	14:16:40	02/15/2011 03:55:52	02/15/2011 03:56:25
		02/15/2011 01:51:55		02/15/2011 03:56:25	02/15/2011 03:57:21
66	0213173724	02/14/2011 11:35:15	14:14:04	02/15/2011 03:57:21	02/15/2011 03:57:55
		02/15/2011 01:49:18		02/15/2011 03:57:55	02/15/2011 03:58:48
67	0213173725	02/14/2011 11:35:15	14:13:45	02/15/2011 03:58:48	02/15/2011 03:59:25
		02/15/2011 01:49:00		02/15/2011 03:59:25	02/15/2011 04:00:16
68	0213173726	02/14/2011 11:35:15	14:08:32	02/15/2011 04:00:16	02/15/2011 04:00:53
		02/15/2011 01:43:47		02/15/2011 04:00:53	02/15/2011 04:01:41
69	0213173727	02/14/2011 11:35:15	14:00:23	02/15/2011 04:01:41	02/15/2011 04:02:18
		02/15/2011 01:35:38		02/15/2011 04:02:18	02/15/2011 04:03:12
70	0213173728	02/14/2011 11:35:15	14:09:44	02/15/2011 04:03:12	02/15/2011 04:03:46
		02/15/2011 01:44:59		02/15/2011 04:03:46	02/15/2011 04:04:44
71	0213173729	02/14/2011 11:35:15	14:09:23	02/15/2011 04:04:44	02/15/2011 04:05:19
		02/15/2011 01:44:38		02/15/2011 04:05:19	02/15/2011 04:06:08
72	0213173730	02/14/2011 11:35:15	14:00:55	02/15/2011 04:06:08	02/15/2011 04:06:44
		02/15/2011 01:36:10		02/15/2011 04:06:44	02/15/2011 04:07:38
73	0213173731	02/14/2011 11:35:15	14:10:12	02/15/2011 04:07:38	02/15/2011 04:08:11
		02/15/2011 01:45:27		02/15/2011 04:08:11	02/15/2011 04:09:06
74	0213173732	02/14/2011 11:35:15	14:22:33	02/15/2011 04:09:06	02/15/2011 04:09:39
		02/15/2011 01:57:48		02/15/2011 04:09:39	02/15/2011 04:10:32
75	0213173733	02/14/2011 11:35:15	14:25:45	02/15/2011 04:10:32	02/15/2011 04:11:09
		02/15/2011 02:01:00		02/15/2011 04:11:09	02/15/2011 04:12:00
76	0213173734	02/14/2011 11:35:15	14:06:53	02/15/2011 04:12:00	02/15/2011 04:12:33
		02/15/2011 01:42:08		02/15/2011 04:12:33	02/15/2011 04:13:30
77	0213173735	02/14/2011 11:35:15	14:15:47	02/15/2011 04:13:30	02/15/2011 04:14:02
		02/15/2011 01:51:02		02/15/2011 04:14:02	02/15/2011 04:14:54
78	0213173736	02/14/2011 11:35:15	14:00:40	02/15/2011 04:14:54	02/15/2011 04:15:28
		02/15/2011 01:35:55		02/15/2011 04:15:28	02/15/2011 04:16:18
79	0213173737	02/14/2011 11:35:15	14:09:22	02/15/2011 04:16:18	02/15/2011 04:16:52
		02/15/2011 01:44:38		02/15/2011 04:16:52	02/15/2011 04:17:49
80	0213173738	02/14/2011 11:35:15	14:25:06	02/15/2011 04:17:49	02/15/2011 04:18:23
		02/15/2011 02:00:22		02/15/2011 04:18:23	02/15/2011 04:19:21
81	0213173739	02/14/2011 11:35:16	14:13:03	02/15/2011 04:19:21	02/15/2011 04:19:57
		02/15/2011 01:48:18		02/15/2011 04:19:56	02/15/2011 04:20:56
82	0213173740	02/14/2011 11:35:16	14:27:51	02/15/2011 04:20:56	02/15/2011 04:21:27
		02/15/2011 02:03:07		02/15/2011 04:21:27	02/15/2011 04:22:22
83	0213173741	02/14/2011 11:35:16	14:25:45	02/15/2011 04:22:22	02/15/2011 04:22:57
		02/15/2011 02:01:00		02/15/2011 04:22:56	02/15/2011 04:23:50
84	0213173742	02/14/2011 11:35:16	14:33:28	02/15/2011 04:23:50	02/15/2011 04:24:23
		02/15/2011 02:08:44		02/15/2011 04:24:23	02/15/2011 04:25:18
85	0213173743	02/14/2011 11:35:16	14:24:42	02/15/2011 04:25:18	02/15/2011 04:25:49
		02/15/2011 01:59:58		02/15/2011 04:25:49	02/15/2011 04:26:42
86	0213173744	02/14/2011 11:35:16	14:07:27	02/15/2011 04:26:42	02/15/2011 04:27:16
		02/15/2011 01:42:43		02/15/2011 04:27:16	02/15/2011 04:28:12
87	0213173745	02/14/2011 11:35:16	14:15:01	02/15/2011 04:28:12	02/15/2011 04:28:49

Throughput Stream	Seed	Query Start Query End	Duration	RF1 Start RF1 End	RF2 Start RF2 End
		02/15/2011 01:50:17		02/15/2011 04:28:49	02/15/2011 04:29:39
88	0213173746	02/14/2011 11:35:16	14:24:42	02/15/2011 04:29:39	02/15/2011 04:30:14
		02/15/2011 01:59:58		02/15/2011 04:30:14	02/15/2011 04:31:08
89	0213173747	02/14/2011 11:35:16	14:34:05	02/15/2011 04:31:08	02/15/2011 04:31:48
		02/15/2011 02:09:21		02/15/2011 04:31:48	02/15/2011 04:32:37
90	0213173748	02/14/2011 11:35:16	14:09:40	02/15/2011 04:32:37	02/15/2011 04:33:20
		02/15/2011 01:44:56		02/15/2011 04:33:20	02/15/2011 04:34:13
91	0213173749	02/14/2011 11:35:16	14:24:19	02/15/2011 04:34:13	02/15/2011 04:34:48
		02/15/2011 01:59:35		02/15/2011 04:34:48	02/15/2011 04:35:42
92	0213173750	02/14/2011 11:35:16	14:27:51	02/15/2011 04:35:42	02/15/2011 04:36:17
		02/15/2011 02:03:07		02/15/2011 04:36:17	02/15/2011 04:37:12
93	0213173751	02/14/2011 11:35:16	14:22:25	02/15/2011 04:37:12	02/15/2011 04:37:49
		02/15/2011 01:57:41		02/15/2011 04:37:49	02/15/2011 04:38:44
94	0213173752	02/14/2011 11:35:16	14:10:44	02/15/2011 04:38:44	02/15/2011 04:39:19
		02/15/2011 01:46:00		02/15/2011 04:39:19	02/15/2011 04:40:10
95	0213173753	02/14/2011 11:35:16	14:24:30	02/15/2011 04:40:10	02/15/2011 04:40:43
		02/15/2011 01:59:46		02/15/2011 04:40:43	02/15/2011 04:41:36
96	0213173754	02/14/2011 11:35:16	14:22:48	02/15/2011 04:41:36	02/15/2011 04:42:08
		02/15/2011 01:58:04		02/15/2011 04:42:08	02/15/2011 04:43:02
97	0213173755	02/14/2011 11:35:16	14:08:31	02/15/2011 04:43:02	02/15/2011 04:43:35
		02/15/2011 01:43:47		02/15/2011 04:43:35	02/15/2011 04:44:28
98	0213173756	02/14/2011 11:35:16	14:25:44	02/15/2011 04:44:28	02/15/2011 04:44:59
		02/15/2011 02:01:00		02/15/2011 04:44:59	02/15/2011 04:45:52
99	0213173757	02/14/2011 11:35:16	14:16:17	02/15/2011 04:45:52	02/15/2011 04:46:24
		02/15/2011 01:51:34		02/15/2011 04:46:24	02/15/2011 04:47:16
100	0213173758	02/14/2011 11:35:16	14:24:44	02/15/2011 04:47:16	02/15/2011 04:47:48
		02/15/2011 02:00:00		02/15/2011 04:47:48	02/15/2011 04:48:41
101	0213173759	02/14/2011 11:35:17	14:20:39	02/15/2011 04:48:41	02/15/2011 04:49:16
		02/15/2011 01:55:56		02/15/2011 04:49:16	02/15/2011 04:50:07
102	0213173760	02/14/2011 11:35:17	14:37:24	02/15/2011 04:50:07	02/15/2011 04:50:44
		02/15/2011 02:12:40		02/15/2011 04:50:44	02/15/2011 04:51:39
103	0213173761	02/14/2011 11:35:17	14:36:27	02/15/2011 04:51:39	02/15/2011 04:52:17
		02/15/2011 02:11:44		02/15/2011 04:52:17	02/15/2011 04:53:13
104	0213173762	02/14/2011 11:35:17	14:36:19	02/15/2011 04:53:13	02/15/2011 04:53:50
		02/15/2011 02:11:36		02/15/2011 04:53:50	02/15/2011 04:54:43
105	0213173763	02/14/2011 11:35:17	14:18:28	02/15/2011 04:54:44	02/15/2011 04:55:24
		02/15/2011 01:53:44		02/15/2011 04:55:24	02/15/2011 04:56:14
106	0213173764	02/14/2011 11:35:17	14:28:36	02/15/2011 04:56:14	02/15/2011 04:56:49
		02/15/2011 02:03:53		02/15/2011 04:56:49	02/15/2011 04:57:44
107	0213173765	02/14/2011 11:35:17	14:42:25	02/15/2011 04:57:44	02/15/2011 04:58:21
		02/15/2011 02:17:42		02/15/2011 04:58:21	02/15/2011 04:59:11
108	0213173766	02/14/2011 11:35:17	14:24:55	02/15/2011 04:59:11	02/15/2011 04:59:48
		02/15/2011 02:00:12		02/15/2011 04:59:48	02/15/2011 05:00:41
109	0213173767	02/14/2011 11:35:17	14:16:37	02/15/2011 05:00:41	02/15/2011 05:01:18
		02/15/2011 01:51:54		02/15/2011 05:01:18	02/15/2011 05:02:13
110	0213173768	02/14/2011 11:35:17	14:25:53	02/15/2011 05:02:13	02/15/2011 05:02:53
		02/15/2011 02:01:10		02/15/2011 05:02:53	02/15/2011 05:03:49
111	0213173769	02/14/2011 11:35:17	14:25:16	02/15/2011 05:03:49	02/15/2011 05:04:21
		02/15/2011 02:00:33		02/15/2011 05:04:21	02/15/2011 05:05:17
112	0213173770	02/14/2011 11:35:17	14:36:49	02/15/2011 05:05:17	02/15/2011 05:05:53
		02/15/2011 02:12:06		02/15/2011 05:05:53	02/15/2011 05:06:44

Throughput Stream	Seed	Query Start Query End	Duration	RF1 Start RF1 End	RF2 Start RF2 End
113	0213173771	02/14/2011 11:35:17	14:35:05	02/15/2011 05:06:44	02/15/2011 05:07:20
		02/15/2011 02:10:22		02/15/2011 05:07:20	02/15/2011 05:08:09
114	0213173772	02/14/2011 11:35:17	14:25:37	02/15/2011 05:08:09	02/15/2011 05:08:42
		02/15/2011 02:00:54		02/15/2011 05:08:42	02/15/2011 05:09:36
115	0213173773	02/14/2011 11:35:17	14:45:14	02/15/2011 05:09:37	02/15/2011 05:10:09
		02/15/2011 02:20:31		02/15/2011 05:10:09	02/15/2011 05:11:12
116	0213173774	02/14/2011 11:35:17	14:33:23	02/15/2011 05:11:12	02/15/2011 05:11:46
		02/15/2011 02:08:40		02/15/2011 05:11:46	02/15/2011 05:12:39
117	0213173775	02/14/2011 11:35:17	14:08:42	02/15/2011 05:12:40	02/15/2011 05:13:14
		02/15/2011 01:43:59		02/15/2011 05:13:13	02/15/2011 05:14:11
118	0213173776	02/14/2011 11:35:17	14:39:08	02/15/2011 05:14:11	02/15/2011 05:14:44
		02/15/2011 02:14:26		02/15/2011 05:14:44	02/15/2011 05:15:34
119	0213173777	02/14/2011 11:35:17	14:33:55	02/15/2011 05:15:34	02/15/2011 05:16:06
		02/15/2011 02:09:12		02/15/2011 05:16:06	02/15/2011 05:17:03
120	0213173778	02/14/2011 11:35:17	14:33:01	02/15/2011 05:17:03	02/15/2011 05:17:39
		02/15/2011 02:08:18		02/15/2011 05:17:39	02/15/2011 05:18:35
121	0213173779	02/14/2011 11:35:17	14:34:17	02/15/2011 05:18:35	02/15/2011 05:19:09
		02/15/2011 02:09:35		02/15/2011 05:19:09	02/15/2011 05:20:05
122	0213173780	02/14/2011 11:35:17	14:44:56	02/15/2011 05:20:05	02/15/2011 05:20:40
		02/15/2011 02:20:14		02/15/2011 05:20:40	02/15/2011 05:21:30
123	0213173781	02/14/2011 11:35:18	14:36:13	02/15/2011 05:21:30	02/15/2011 05:22:05
		02/15/2011 02:11:30		02/15/2011 05:22:05	02/15/2011 05:22:59
124	0213173782	02/14/2011 11:35:18	14:45:15	02/15/2011 05:22:59	02/15/2011 05:23:31
		02/15/2011 02:20:33		02/15/2011 05:23:31	02/15/2011 05:24:24
125	0213173783	02/14/2011 11:35:18	14:45:41	02/15/2011 05:24:25	02/15/2011 05:24:58
		02/15/2011 02:20:58		02/15/2011 05:24:58	02/15/2011 05:25:55
126	0213173784	02/14/2011 11:35:18	14:39:25	02/15/2011 05:25:55	02/15/2011 05:26:31
		02/15/2011 02:14:43		02/15/2011 05:26:31	02/15/2011 05:27:23
127	0213173785	02/14/2011 11:35:18	14:37:27	02/15/2011 05:27:23	02/15/2011 05:27:59
		02/15/2011 02:12:45		02/15/2011 05:27:59	02/15/2011 05:28:52
128	0213173786	02/14/2011 11:35:18	14:39:28	02/15/2011 05:28:52	02/15/2011 05:29:32
		02/15/2011 02:14:46		02/15/2011 05:29:32	02/15/2011 05:30:23

**TPC-H Timing Intervals (in seconds):**

Stream ID	Q1	Q2	Q3	Q4	Q5	Q6	Q7	Q8	Q9	Q10	Q11	Q12
0	147.5	14.8	10.7	10.9	43.3	7.7	47.2	39.0	180.4	25.4	28.2	39.6
1	1,962.6	2,108.2	4,825.3	1,751.2	3,212.6	3,433.2	2,101.5	1,465.5	1,398.2	1,291.7	2,369.8	2,424.1
2	1,678.9	3,188.8	1,534.0	1,422.0	2,241.8	15.5	1,284.8	2,315.6	3,616.9	2,175.5	2,079.2	2,692.6
3	3,318.8	1,381.9	1,842.0	3,488.3	5,213.7	3,048.5	2,167.1	61.6	2,210.1	2,157.1	1,337.2	2,098.7
4	1,572.0	1,393.8	2,007.9	1,753.9	100.4	3,101.0	1,348.5	2,301.4	2,569.3	1,911.2	2,585.3	3,431.0
5	1,284.8	2,130.2	2,735.8	3,528.4	1,393.0	3,166.4	2,483.5	1,722.9	1,751.2	1,961.4	2,324.3	1,489.4
6	1,442.2	1,687.4	5,071.2	1,873.5	1,975.7	2,441.4	2,997.6	2,158.8	3,480.9	198.0	1,983.0	2,859.2
7	2,131.1	2,385.8	2,258.2	2,231.9	1,806.7	1,499.5	1,391.4	4,712.9	2,314.6	1,571.0	2,072.1	2,065.2
8	5,023.6	1,389.1	2,234.9	2,237.8	2,359.1	1,933.4	2,058.2	2,319.3	3,561.7	1,711.3	1,763.2	3,317.8
9	1,381.5	3,385.0	2,150.0	1,319.0	1,963.0	3,307.1	1,678.5	579.2	1,488.4	2,060.3	2,337.1	1,515.3
10	2,460.5	3,190.1	2,099.7	1,568.0	1,760.8	542.2	3,435.9	2,036.5	1,270.8	2,212.9	1,442.1	2,341.8
11	1,559.9	1,515.4	2,099.4	2,182.8	2,725.5	1,554.4	1,793.1	2,297.1	1,368.4	2,405.7	3,266.6	1,399.4
12	801.7	2,744.3	1,674.8	2,047.9	1,284.5	3,082.9	4,702.6	1,849.7	2,310.7	1,342.5	2,272.8	3,416.0
13	2,619.8	2,602.2	3,229.7	1,382.2	1,891.6	2,228.1	3,251.3	1,791.6	1,799.1	2,328.0	2,219.5	3,281.2
14	2,308.8	825.8	1,593.4	3,257.4	3,304.2	1,751.0	2,201.8	1,516.0	4,927.0	1,387.5	1,652.4	2,035.2



Stream ID	Q1	Q2	Q3	Q4	Q5	Q6	Q7	Q8	Q9	Q10	Q11	Q12
15	1,570.7	1,560.8	2,220.7	1,976.7	1,291.6	1,454.4	2,223.5	3,291.0	5,041.3	3,305.0	2,393.9	3,206.6
16	1,147.6	2,282.4	4,691.2	2,257.6	3,270.6	3,159.1	2,186.0	1,481.4	2,516.8	2,384.9	1,643.8	1,776.3
17	1,558.4	3,345.7	1,083.1	1,619.1	3,215.8	2,193.9	2,154.6	2,695.3	2,443.7	1,513.4	3,237.0	1,504.9
18	2,595.3	2,224.8	1,505.2	4,660.1	3,234.4	3,226.6	1,593.4	3,306.0	1,438.5	1,793.1	2,290.0	1,671.8
19	1,638.4	3,149.7	1,975.5	1,112.9	2,264.4	1,490.7	1,440.3	1,643.9	2,209.2	2,364.7	1,459.1	4,705.3
20	2,230.7	1,757.4	1,477.4	2,258.5	2,504.5	2,160.9	1,570.7	1,510.4	2,014.4	1,291.7	1,323.2	2,249.6
21	2,400.8	1,770.4	1,856.6	3,340.2	1,472.4	1,723.8	1,438.5	1,736.8	1,413.8	2,402.3	2,195.6	3,323.2
22	1,714.6	3,255.0	1,448.0	3,295.2	1,517.2	1,591.8	1,638.7	1,645.1	2,417.3	2,333.6	3,302.5	2,259.4
23	2,210.7	2,248.3	2,086.3	1,532.8	1,819.6	2,614.0	1,544.9	3,261.5	3,483.5	1,438.4	3,214.9	2,432.3
24	1,617.3	1,639.2	4,719.4	2,238.0	1,619.1	3,226.8	1,284.1	2,285.1	2,559.8	3,106.0	2,092.6	1,594.7
25	4,913.9	3,193.5	1,561.9	1,296.8	2,252.2	2,162.3	3,267.1	2,030.8	1,730.5	2,429.9	2,236.2	1,876.9
26	1,560.0	4,632.6	1,491.1	2,163.2	3,230.6	1,890.4	1,471.2	1,674.9	2,379.0	2,401.9	2,249.6	1,732.8
27	1,793.1	2,317.7	1,473.1	3,143.6	1,823.0	2,965.7	2,267.8	2,983.0	2,861.7	1,375.2	1,515.9	1,790.0
28	3,069.4	1,517.1	1,291.6	2,040.9	1,570.2	1,375.2	2,199.5	1,746.7	2,288.7	1,356.9	1,497.2	3,390.7
29	3,587.2	1,510.8	1,676.9	1,808.2	3,233.1	2,263.7	2,117.9	4,685.0	3,427.1	1,395.9	2,083.8	2,381.4
30	2,219.6	1,830.9	2,403.6	2,089.0	3,027.5	1,522.0	1,451.0	1,654.7	1,869.6	2,229.6	1,499.7	1,715.3
31	3,220.3	1,420.3	2,940.7	2,208.0	2,089.2	1,773.9	2,643.0	1,694.3	4,951.8	1,580.0	2,885.3	1,685.4
32	1,716.1	1,818.8	2,014.9	2,976.1	2,227.4	2,561.6	2,224.8	3,381.0	1,991.5	1,480.1	1,537.2	4,589.6
33	1,772.9	3,375.7	2,180.1	2,285.3	3,275.1	1,429.6	2,150.9	1,585.3	1,592.3	2,619.8	2,990.6	1,933.2
34	1,734.5	1,830.1	2,946.1	2,493.1	1,631.2	3,076.1	2,352.6	1,828.9	2,391.3	1,648.1	3,344.1	1,554.4
35	1,825.1	2,240.3	1,612.3	1,622.1	3,159.4	1,327.6	1,513.7	2,499.4	1,917.4	3,184.6	1,844.1	2,663.9
36	2,458.6	1,781.9	2,053.3	2,851.5	2,473.6	2,386.0	3,296.0	1,460.9	1,890.4	1,448.0	1,750.9	2,333.8
37	1,515.0	1,840.4	1,585.9	1,631.0	3,284.4	2,923.1	2,431.0	2,518.4	3,286.6	2,303.6	2,473.5	1,429.6
38	2,569.5	2,429.8	2,304.0	3,312.0	4,617.4	2,902.3	2,410.4	1,866.9	2,202.8	1,456.2	2,485.1	1,695.2
39	1,386.5	2,088.3	1,795.9	2,158.4	2,158.2	2,357.8	4,741.5	1,541.8	1,875.8	2,252.2	1,482.2	1,848.5
40	2,946.3	1,640.7	3,229.4	3,273.4	2,214.1	1,476.5	1,490.1	1,681.5	2,902.0	1,299.9	2,207.4	1,895.6
41	1,537.7	4,598.9	2,348.6	1,687.7	1,744.6	2,222.9	2,214.2	3,021.2	3,705.8	1,501.3	1,625.4	1,795.9
42	1,798.5	1,658.7	4,312.7	2,359.1	2,838.4	3,074.6	2,325.9	1,693.0	1,725.9	1,492.6	2,490.1	2,009.2
43	1,580.0	2,617.1	1,826.4	1,514.4	2,261.5	1,804.6	1,659.0	2,101.5	3,234.6	2,949.4	2,128.7	2,183.2
44	2,963.9	1,598.4	1,485.2	3,165.1	4,654.6	2,957.9	2,435.8	1,881.9	2,584.9	2,306.7	1,545.0	2,211.5
45	1,568.6	1,678.4	2,237.2	1,848.6	1,881.4	2,934.6	1,299.9	2,348.1	2,208.0	1,609.9	2,376.6	3,045.3
46	1,659.0	1,688.7	2,211.4	3,204.5	1,489.3	2,801.9	2,596.6	1,649.3	2,462.2	1,951.8	2,357.4	1,500.8
47	1,672.2	1,594.1	4,624.6	1,826.0	1,661.0	2,464.8	3,092.4	2,214.3	3,484.7	1,935.3	2,000.8	2,492.9
48	1,800.4	2,087.0	1,970.9	2,963.0	1,841.1	1,336.4	1,444.8	4,264.7	2,313.1	1,548.1	2,204.4	2,354.2
49	4,447.1	1,382.6	2,466.1	2,235.5	2,203.5	1,756.3	2,226.2	2,702.2	3,320.8	1,517.4	2,010.3	3,019.0
50	1,566.1	3,176.5	2,731.8	1,631.2	2,076.7	2,958.1	1,660.9	2,377.0	1,392.5	2,188.2	2,018.2	1,694.0
51	2,548.4	3,064.4	1,647.5	1,796.2	1,960.7	2,336.4	3,013.9	2,139.2	1,663.8	2,206.1	1,454.1	2,386.3
52	1,810.9	1,565.5	1,671.2	2,465.8	2,353.2	1,723.8	1,617.8	1,951.5	1,605.8	2,292.8	3,057.6	1,609.3
53	2,621.0	2,060.6	1,799.3	2,535.8	1,657.4	3,011.2	4,321.8	1,891.6	2,358.2	1,509.1	2,289.4	3,061.5
54	2,180.9	2,379.2	2,867.0	1,688.7	1,605.3	2,328.0	2,900.1	1,591.4	1,821.9	2,801.8	2,226.1	2,962.4
55	2,930.6	2,501.3	1,969.2	2,927.4	3,021.5	2,375.8	2,187.0	1,517.0	4,571.4	1,367.3	1,566.7	1,947.8
56	1,596.7	1,744.0	2,185.7	2,159.2	1,631.2	1,827.7	2,307.7	2,824.6	4,830.2	2,892.4	2,947.7	2,955.5
57	2,854.0	2,219.5	4,362.4	2,270.4	2,932.2	2,918.6	1,977.2	1,462.3	2,621.2	2,178.1	1,687.1	1,656.7
58	1,585.9	3,030.1	2,648.2	1,529.1	3,010.8	2,107.8	2,218.5	2,363.0	2,723.7	1,843.4	2,825.6	1,951.9
59	1,923.1	2,243.2	1,836.0	4,379.2	2,918.8	2,326.7	1,855.7	3,117.2	1,420.7	1,815.6	3,062.0	1,608.6
60	1,836.0	2,887.6	1,602.3	2,678.4	2,212.8	1,515.6	1,659.0	1,895.8	2,359.6	2,033.2	1,344.1	4,446.7
61	2,337.3	1,954.4	1,456.4	2,232.2	1,959.5	1,979.2	1,877.4	2,205.8	1,515.4	1,632.6	1,406.5	2,342.9
62	2,632.7	2,085.3	1,917.0	2,952.3	1,634.4	1,915.2	1,416.3	1,635.9	1,369.3	2,038.9	2,351.0	3,053.9
63	1,760.1	2,948.9	1,506.8	2,991.2	1,641.7	1,548.7	1,806.7	1,429.2	2,073.9	2,784.1	2,917.6	2,411.4
64	2,518.2	2,866.8	1,867.0	1,492.3	1,909.5	2,030.9	2,425.6	3,283.0	3,323.5	1,384.5	2,595.6	2,209.6
65	1,445.6	1,751.8	4,328.0	2,103.2	1,506.9	2,565.6	2,912.7	2,597.0	2,608.7	2,957.5	1,737.9	1,595.0

Stream ID	Q1	Q2	Q3	Q4	Q5	Q6	Q7	Q8	Q9	Q10	Q11	Q12
66	4,623.9	2,937.5	1,555.0	1,370.9	2,039.9	1,812.3	2,625.0	1,835.3	2,758.2	2,946.2	2,376.4	2,152.2
67	1,568.8	4,397.1	1,424.1	2,197.0	2,622.0	1,798.4	1,834.7	1,525.7	2,722.9	2,164.7	2,111.8	2,148.0
68	1,969.4	2,287.3	1,659.0	2,565.8	1,841.2	2,875.6	2,523.8	2,672.3	3,124.6	1,381.6	1,573.8	1,934.6
69	2,948.3	1,842.8	1,634.0	1,806.7	1,538.9	1,386.6	2,514.6	1,855.9	1,991.9	3,002.2	2,074.0	2,936.3
70	3,290.5	1,416.5	1,668.1	2,415.0	2,588.9	2,781.9	2,210.2	4,415.7	3,216.8	3,011.8	2,153.6	2,271.5
71	2,538.3	2,394.0	2,253.3	1,779.5	2,565.4	1,450.1	3,071.6	1,524.5	2,182.6	2,823.3	1,408.8	1,492.0
72	2,964.5	3,041.5	2,845.4	2,088.6	2,050.5	1,925.7	2,996.5	1,776.1	4,385.5	1,592.5	2,862.3	1,511.5
73	1,713.2	2,436.7	2,213.5	2,599.0	2,558.4	1,890.0	2,110.0	3,202.4	1,786.9	1,511.5	1,436.4	4,466.6
74	3,033.7	3,127.4	2,483.8	2,218.9	3,095.2	1,450.3	3,130.0	1,693.2	1,983.8	1,935.5	2,721.7	1,757.5
75	3,407.3	2,833.9	2,744.9	2,293.8	1,959.8	3,045.9	1,918.1	1,970.1	2,795.3	1,530.6	3,286.9	1,333.0
76	1,923.3	2,259.9	1,624.2	1,841.1	3,109.9	1,354.2	1,479.8	2,322.4	1,754.4	2,299.8	2,375.8	1,993.3
77	2,772.2	2,122.4	2,184.1	2,646.6	2,410.4	1,794.9	3,121.5	1,468.2	3,402.3	1,475.3	1,962.8	1,741.2
78	1,511.5	1,928.6	1,602.1	1,632.6	3,076.7	2,299.6	1,959.5	2,321.1	3,264.5	2,491.0	3,068.9	1,351.6
79	3,124.8	1,964.8	2,530.2	3,134.1	4,220.8	2,945.9	2,188.3	1,965.7	2,393.9	1,408.8	2,246.3	1,779.3
80	1,839.9	2,944.4	3,346.1	2,163.1	3,051.8	2,313.7	4,352.3	1,611.6	1,395.7	2,183.9	1,559.8	2,098.8
81	2,815.4	1,910.0	3,109.0	2,328.8	1,717.5	1,514.5	2,021.8	1,713.4	1,936.4	1,419.0	3,005.1	2,206.7
82	1,400.8	4,214.2	2,018.4	2,058.0	1,920.5	2,011.6	1,939.7	2,179.7	3,573.6	1,494.5	1,420.3	2,960.7
83	1,872.5	1,825.7	3,785.3	2,833.8	2,588.8	2,886.7	3,139.1	1,478.1	1,774.7	1,797.5	2,328.9	2,308.5
84	1,299.8	1,893.8	2,028.6	1,542.3	2,112.9	3,412.8	2,036.5	2,448.7	3,449.8	3,211.9	1,912.4	1,616.1
85	3,418.0	1,663.0	2,947.9	3,173.7	4,079.9	2,578.2	3,149.9	3,494.4	2,480.0	2,739.3	1,935.5	1,933.7
86	1,569.5	1,743.2	1,932.2	1,841.4	3,520.5	2,348.0	1,354.2	2,188.4	2,470.3	1,765.1	1,827.1	3,061.0
87	1,632.7	1,867.5	1,957.6	3,123.0	1,425.7	2,645.5	2,334.7	1,662.9	2,732.7	1,790.3	2,164.4	1,426.1
88	1,716.7	1,602.5	4,073.7	1,964.9	1,798.4	2,279.9	2,424.1	3,100.7	3,232.7	3,520.2	2,238.6	1,817.3
89	1,966.1	2,055.4	1,315.7	3,150.0	1,332.9	1,553.9	1,687.8	3,732.1	2,479.5	1,531.8	2,361.6	3,198.8
90	4,054.1	1,427.5	2,576.4	1,944.3	2,228.0	1,688.2	2,376.0	3,123.0	3,358.9	1,420.0	2,495.3	2,185.2
91	1,692.2	3,151.6	3,312.8	1,855.9	1,734.1	3,178.0	1,260.0	4,001.1	1,769.5	2,689.3	2,392.1	1,428.8
92	3,190.0	2,134.7	1,490.7	1,966.6	2,916.1	3,954.6	3,130.8	1,984.2	2,330.2	2,583.7	1,557.7	2,381.3
93	1,961.1	1,475.6	1,759.1	2,132.3	1,761.6	2,109.0	3,025.5	2,299.0	1,783.8	2,212.1	2,237.0	1,804.9
94	4,231.9	1,417.5	1,971.3	2,711.6	1,914.2	2,038.0	3,876.6	2,043.0	2,422.8	1,560.7	2,178.5	3,214.8
95	2,055.0	1,354.8	2,422.6	2,074.0	1,417.2	1,996.5	3,244.3	1,385.5	2,263.9	3,243.8	2,847.9	3,308.3
96	3,312.5	4,043.8	1,971.6	2,716.5	2,827.4	2,999.1	2,167.7	1,643.2	3,981.6	1,476.1	1,643.7	1,845.4
97	1,601.2	2,077.9	2,512.3	1,830.8	1,713.2	1,926.7	2,115.8	2,674.5	4,029.8	3,059.9	3,132.9	2,296.6
98	4,349.5	2,191.3	3,774.9	1,969.6	2,711.3	2,959.2	1,939.7	1,728.7	2,991.0	1,451.5	1,988.5	1,418.7
99	1,260.0	3,159.6	4,246.5	1,450.6	2,907.4	1,731.7	2,551.7	1,866.3	3,293.1	1,929.4	2,698.5	2,740.0
100	1,947.5	2,189.6	1,923.5	3,828.6	2,598.0	2,222.4	1,999.1	3,153.4	1,764.7	1,844.7	3,039.4	1,470.8
101	2,991.8	2,073.8	1,731.1	4,282.5	2,137.5	1,617.2	1,855.9	2,002.6	2,868.1	2,178.0	1,397.1	3,901.3
102	2,491.1	1,958.1	1,656.5	2,206.1	1,339.0	1,839.1	2,028.8	3,305.0	1,822.6	1,975.7	1,579.3	2,238.3
103	3,072.1	3,249.3	1,846.7	3,159.7	2,024.0	1,969.7	1,651.6	1,421.1	1,780.2	2,339.9	2,154.8	2,875.6
104	1,935.7	2,684.7	1,494.5	2,072.9	1,957.9	1,400.5	1,638.0	1,722.7	2,187.8	3,190.5	3,217.0	2,684.7
105	2,704.8	3,143.7	1,737.0	1,542.8	1,658.7	1,407.4	2,800.0	3,205.5	3,222.8	1,641.8	2,077.8	2,084.2
106	1,662.2	1,546.1	3,712.8	2,281.9	1,245.2	2,115.6	4,457.4	2,753.3	2,507.2	2,954.1	1,892.7	1,702.4
107	3,981.6	2,083.2	1,450.0	1,653.6	2,360.6	1,778.8	2,540.8	1,561.7	3,606.9	3,149.0	2,791.0	2,051.5
108	1,282.1	3,764.9	1,647.2	1,944.2	2,481.2	1,531.0	2,004.5	1,574.8	2,963.4	2,376.1	2,144.4	2,082.0
109	1,548.5	2,067.3	1,988.5	1,925.9	1,981.3	3,157.0	2,724.5	2,559.7	3,463.9	1,514.7	1,606.5	1,944.2
110	3,197.0	2,056.8	1,914.6	1,650.3	1,282.1	1,513.3	2,761.8	2,019.7	2,088.2	4,540.4	2,893.8	2,498.8
111	3,384.3	1,672.5	2,023.8	2,858.9	1,975.4	3,243.7	1,887.2	3,756.4	3,429.4	4,595.6	2,273.7	2,109.0
112	2,611.3	3,270.5	1,973.3	1,836.5	2,418.6	1,420.9	4,684.3	1,604.8	2,282.7	3,185.0	1,564.6	1,770.0
113	3,482.3	4,625.1	2,348.8	2,049.8	2,254.8	1,983.1	3,259.8	2,144.8	4,108.7	1,594.0	1,926.8	1,432.7
114	2,166.2	2,865.4	2,359.3	2,426.0	2,750.5	1,400.9	2,093.7	3,181.4	1,535.0	1,474.7	1,643.2	3,895.6
115	3,712.9	3,160.1	2,758.5	2,454.3	3,164.8	1,348.5	3,347.9	1,720.5	2,254.6	1,465.7	2,444.3	1,500.2
116	5,061.3	3,179.6	2,393.4	2,186.3	1,975.5	3,053.1	1,543.3	2,075.7	2,758.3	1,467.5	3,128.7	1,423.9

Stream ID	Q1	Q2	Q3	Q4	Q5	Q6	Q7	Q8	Q9	Q10	Q11	Q12
117	1,916.9	2,160.4	1,303.1	1,677.0	3,307.6	1,368.8	1,453.8	2,103.0	1,884.4	1,881.6	2,450.5	1,407.4
118	3,064.6	2,048.5	2,303.7	2,408.4	2,156.7	1,334.9	3,072.6	1,554.5	5,024.1	1,514.0	2,027.4	1,923.4
119	1,471.6	2,068.9	1,531.7	2,012.5	3,107.4	1,602.7	1,324.2	2,174.7	3,421.6	2,704.5	3,449.6	1,560.4
120	3,500.0	1,506.0	2,739.8	3,098.9	3,774.6	3,072.2	2,013.3	2,048.2	3,271.7	1,461.5	2,101.1	2,143.1
121	2,010.0	3,174.2	4,935.0	1,920.3	3,329.1	2,170.9	3,782.8	1,438.5	1,651.6	2,430.7	1,472.7	2,149.1
122	2,314.2	1,618.9	3,221.5	1,780.1	1,499.2	1,349.9	2,302.2	1,988.4	1,648.9	1,789.7	3,402.2	2,139.8
123	1,489.6	3,713.6	2,157.2	2,099.0	2,010.3	2,147.9	1,754.2	2,028.8	3,038.8	1,514.0	1,392.9	3,328.0
124	1,901.8	1,407.6	3,393.5	3,093.3	2,285.2	3,066.2	3,387.5	1,745.2	1,767.0	2,033.0	2,232.1	2,395.6
125	1,501.6	1,500.3	1,983.4	1,390.0	2,227.3	5,071.0	1,644.0	2,314.7	3,425.2	3,298.1	1,775.9	1,625.8
126	3,062.7	1,677.8	3,378.6	3,039.0	3,613.0	2,358.2	3,440.3	5,138.4	2,294.3	2,697.2	2,026.9	1,896.1
127	1,489.6	2,060.8	1,835.7	2,044.8	5,106.5	1,870.1	1,560.6	2,151.7	2,688.0	1,368.4	1,308.8	3,053.3
128	2,036.6	1,430.9	1,302.9	3,202.5	1,647.4	2,326.3	2,206.7	1,446.7	3,588.1	1,860.7	2,156.3	1,490.7
Min	147.5	14.8	10.7	10.9	43.3	7.7	47.2	39.0	180.4	25.4	28.2	39.6
Avg	2,305.9	2,287.8	2,301.5	2,278.2	2,336.3	2,192.6	2,314.2	2,200.1	2,577.6	2,066.4	2,173.3	2,240.7
Max	5,061.3	4,632.6	5,071.2	4,660.1	5,213.7	5,071.0	4,741.5	5,138.4	5,041.3	4,595.6	3,449.6	4,705.3

Stream ID	Q13	Q14	Q15	Q16	Q17	Q18	Q19	Q20	Q21	Q22	RF1	RF2
0	77.9	6.1	10.5	14.6	52.0	188.4	61.7	22.1	192.2	30.0	33.0	40.9
1	2,593.9	1,584.2	2,230.8	2,214.1	2,030.2	3,466.6	1,681.3	3,075.7	471.8	1,665.8	35.7	46.9
2	2,026.9	3,534.9	1,560.9	3,077.2	5,226.9	1,385.1	2,582.6	1,687.4	1,793.1	2,130.0	38.0	54.6
3	1,586.9	2,295.3	2,709.1	1,462.2	2,599.2	3,058.1	1,541.6	2,034.9	1,639.3	1,969.1	35.4	56.7
4	1,594.0	3,534.9	2,433.9	2,231.5	2,164.1	1,479.1	3,212.7	1,850.1	5,141.9	1,628.7	41.8	50.9
5	2,046.5	1,559.9	4,776.8	2,158.5	1,678.1	3,178.0	3,524.5	1,588.0	528.2	2,348.3	37.0	51.7
6	3,033.4	1,385.2	3,494.2	1,483.0	2,132.6	2,086.9	1,600.4	1,569.6	1,851.0	2,380.8	35.1	52.8
7	1,687.0	1,758.6	2,126.1	1,522.5	3,323.0	1,104.8	2,358.2	3,178.7	3,665.2	3,232.9	38.6	56.9
8	1,496.4	1,715.3	3,253.3	1,394.5	3,339.2	2,021.8	551.5	2,566.5	1,592.2	1,518.1	33.6	55.7
9	4,826.0	1,554.4	2,709.7	1,887.8	2,507.1	1,510.3	2,313.7	3,129.5	3,509.8	2,110.2	38.2	51.5
10	2,290.8	2,587.0	4,871.0	1,397.8	3,301.6	3,388.2	1,661.3	1,706.9	2,180.4	1,597.4	34.2	50.6
11	1,488.3	4,773.6	640.3	3,382.7	3,281.9	3,387.4	2,085.3	2,205.8	1,675.5	2,161.9	34.4	53.7
12	1,678.5	1,966.0	1,839.1	3,310.3	3,346.3	2,283.8	1,707.2	2,080.8	1,410.9	2,190.3	34.8	55.0
13	1,355.6	1,503.2	2,021.2	2,102.8	4,630.0	1,723.8	1,747.1	1,528.8	1,068.9	3,233.2	39.1	53.1
14	2,698.0	1,335.2	3,195.1	1,564.0	2,355.0	2,236.1	2,138.0	3,360.9	2,074.2	1,640.8	37.6	54.5
15	1,594.0	2,264.1	2,601.2	854.7	3,190.6	1,839.2	1,455.8	1,491.7	2,401.9	2,113.8	36.8	48.8
16	1,738.7	3,339.6	1,618.1	2,345.4	1,667.7	1,306.5	1,602.0	2,366.8	1,469.9	3,233.3	37.9	55.7
17	1,491.1	1,976.9	3,154.2	4,650.8	2,305.3	2,310.7	1,441.2	1,774.0	2,339.5	1,511.9	33.2	54.7
18	3,197.6	1,091.8	1,387.5	1,770.8	2,317.1	1,560.3	1,473.2	2,286.5	2,718.3	2,067.4	34.2	50.1
19	1,560.2	3,271.8	2,331.3	3,401.4	2,295.2	1,594.0	2,183.4	1,604.9	2,504.5	3,195.7	34.1	49.2
20	3,205.0	3,118.8	4,851.6	1,139.3	2,253.7	3,315.0	3,284.4	2,113.1	1,526.1	2,466.9	40.1	53.6
21	1,472.4	4,698.7	2,258.1	2,654.2	2,401.1	1,793.1	3,214.6	1,147.3	3,145.7	1,537.5	34.1	48.9
22	3,281.1	4,715.4	1,350.2	1,161.7	1,921.6	2,359.2	2,610.8	1,803.1	2,381.0	2,119.6	33.6	54.7
23	1,724.4	3,012.5	4,525.5	2,245.2	1,487.1	1,576.4	1,699.3	1,463.1	2,040.3	1,747.7	36.6	52.2
24	2,247.6	3,215.8	1,563.2	1,801.3	1,938.5	3,175.7	1,422.0	1,549.2	2,749.1	2,386.6	37.8	55.7
25	3,034.3	3,315.2	1,368.1	2,233.2	1,618.2	1,161.2	1,640.1	1,675.7	2,158.4	2,686.7	37.3	50.1
26	1,355.5	3,170.3	1,388.9	1,721.2	2,052.0	1,366.3	2,663.3	3,359.2	2,374.3	3,158.0	35.9	50.3
27	1,947.7	1,302.1	2,542.5	1,731.0	4,668.0	1,438.5	1,707.7	2,064.9	3,546.4	2,284.0	36.4	55.4
28	2,428.9	2,227.2	2,601.2	2,205.9	1,546.8	2,223.5	1,706.9	3,269.9	3,275.1	4,683.0	33.2	50.7
29	1,687.9	1,380.3	1,579.8	2,343.8	2,461.3	2,904.7	1,884.3	1,886.8	1,514.4	2,296.3	31.8	51.4
30	3,199.6	2,317.6	2,296.3	1,608.8	4,743.9	3,274.6	1,632.2	1,787.4	2,386.2	3,394.3	32.2	53.6
31	1,377.2	2,076.8	1,381.0	1,881.8	1,804.9	2,255.1	2,365.4	2,354.4	3,733.6	1,876.5	35.2	56.9
32	2,238.5	1,327.6	1,581.8	3,275.6	3,331.1	1,772.5	2,316.6	1,800.9	1,585.9	2,385.1	34.3	51.6

Stream ID	Q13	Q14	Q15	Q16	Q17	Q18	Q19	Q20	Q21	Q22	RF1	RF2
33	1,651.7	3,129.7	1,585.5	4,611.0	2,438.3	1,389.1	1,849.2	1,575.9	2,180.4	2,244.4	33.6	55.7
34	4,646.0	3,192.4	1,711.0	1,534.4	1,484.4	2,478.0	2,211.3	1,608.4	2,321.9	2,126.9	36.2	58.8
35	1,997.2	1,585.5	2,091.0	2,220.1	4,693.0	1,542.9	1,940.0	2,965.2	2,211.8	3,416.7	33.7	56.8
36	2,333.9	1,572.1	1,585.4	1,517.9	4,647.8	3,192.4	1,931.1	1,692.7	3,068.4	2,410.0	38.9	48.9
37	1,768.6	4,603.1	1,888.7	1,565.4	1,758.9	1,810.9	2,517.7	1,871.8	2,088.6	3,004.6	40.7	55.0
38	1,461.2	2,990.7	1,782.4	3,161.8	1,675.6	2,094.0	1,730.7	1,767.0	1,613.7	1,996.2	36.6	52.9
39	1,933.9	3,169.8	2,952.5	2,213.7	1,650.6	1,541.4	2,732.2	3,219.4	3,251.1	2,137.9	40.5	56.5
40	1,768.5	2,217.5	4,603.1	1,569.2	3,298.2	1,576.9	1,793.8	2,279.4	2,232.5	2,397.2	37.0	56.8
41	2,034.3	1,790.8	1,542.9	2,381.2	2,763.3	2,952.3	1,457.5	2,935.5	1,761.8	2,371.5	36.8	51.5
42	2,386.2	1,548.7	2,324.1	2,368.0	1,947.9	3,272.1	1,721.1	3,216.5	2,247.1	2,119.2	34.2	47.5
43	1,783.7	3,174.8	1,868.5	3,077.6	4,722.2	1,415.0	2,558.9	1,427.4	1,771.1	2,413.2	38.1	56.5
44	1,296.2	1,979.9	2,375.5	1,742.8	2,502.3	3,192.5	1,570.3	1,667.4	1,582.1	1,811.8	32.9	57.2
45	1,477.1	3,307.0	2,430.3	2,220.7	2,653.2	1,577.1	3,116.7	1,553.7	4,508.0	1,785.4	34.0	54.9
46	2,362.7	1,845.2	4,379.4	2,946.2	1,910.7	2,839.1	3,033.8	1,537.4	2,317.1	2,071.5	35.3	52.6
47	2,838.4	1,479.9	3,271.8	1,509.0	2,215.3	2,323.5	1,476.0	1,839.7	2,490.9	2,384.2	33.7	56.0
48	1,745.9	1,937.5	1,979.4	1,486.4	2,938.2	2,483.4	2,597.7	3,211.5	3,278.3	3,006.5	32.4	54.4
49	1,560.5	1,840.8	3,297.8	1,682.2	2,912.1	2,076.8	2,345.3	2,041.3	1,773.6	1,514.3	32.5	54.6
50	4,315.7	1,753.6	2,346.8	1,848.4	2,555.7	1,859.5	2,508.0	2,854.3	2,923.5	1,733.0	33.0	53.8
51	1,937.7	2,376.4	4,423.7	1,632.5	2,863.0	3,196.5	1,704.7	1,631.5	2,446.2	1,853.0	34.4	53.6
52	1,273.8	4,290.4	2,522.7	3,017.1	2,931.0	3,168.8	2,021.3	2,580.5	1,506.7	2,370.1	36.7	56.7
53	1,551.7	2,076.8	1,969.8	3,076.2	2,963.4	2,223.2	1,513.1	1,808.0	1,409.4	2,582.4	36.5	48.7
54	1,396.6	1,542.9	2,214.2	2,090.5	4,373.9	1,710.6	1,800.6	1,542.5	2,977.0	2,997.8	34.9	50.8
55	2,030.9	1,665.9	2,950.8	1,899.9	2,203.3	2,231.6	1,847.5	2,975.1	2,535.8	1,590.5	34.8	51.5
56	1,526.2	2,126.7	2,346.8	2,521.9	3,012.8	1,646.1	1,426.1	1,642.0	2,033.7	1,660.3	38.4	53.0
57	1,939.8	2,948.1	1,755.1	2,744.5	1,865.9	1,317.1	1,676.4	2,037.2	2,375.8	3,014.5	35.8	52.2
58	1,489.9	1,682.5	2,949.1	4,359.4	2,496.2	2,034.3	1,767.1	1,859.8	2,361.4	1,428.5	37.2	57.6
59	3,107.6	2,661.4	1,351.6	2,152.7	2,194.6	1,511.3	1,774.7	2,526.1	2,723.6	2,043.5	35.5	49.6
60	1,568.6	2,937.6	2,810.0	3,047.5	2,397.2	1,477.1	2,317.7	1,785.2	2,236.8	3,023.2	40.4	54.7
61	2,917.0	2,977.2	4,406.0	2,720.9	2,599.9	2,954.1	3,033.7	1,831.8	1,552.0	2,751.5	33.1	49.7
62	1,845.3	4,357.3	2,140.6	2,067.3	2,904.5	1,792.2	2,962.5	2,770.7	2,976.0	1,620.0	32.4	52.4
63	2,925.1	4,389.9	1,499.7	2,803.5	1,959.3	2,313.7	2,470.9	1,802.5	2,231.2	2,064.1	32.4	47.1
64	2,023.8	2,728.7	4,387.1	2,204.5	1,776.0	2,803.1	1,695.7	1,371.7	2,132.7	1,882.5	35.9	53.1
65	2,231.7	2,868.5	1,813.4	2,690.2	2,118.6	3,210.7	1,541.0	1,854.6	3,092.6	1,868.9	32.7	56.0
66	3,140.0	2,881.5	1,664.7	2,098.0	1,512.8	2,853.3	1,889.9	1,559.7	2,317.5	2,293.3	34.3	52.8
67	3,031.5	2,548.0	1,297.1	2,640.1	1,916.1	1,736.3	2,053.8	2,912.7	3,360.2	3,213.9	36.9	51.3
68	2,099.2	2,928.4	2,030.9	1,516.0	4,422.4	1,435.7	2,469.5	2,006.5	3,290.8	2,303.6	37.1	47.5
69	2,201.7	2,111.2	1,932.4	2,349.6	1,528.1	2,815.6	1,588.1	2,592.5	3,358.2	4,413.8	36.5	54.2
70	1,792.0	1,356.7	1,630.9	2,022.7	2,317.2	2,620.1	1,915.1	1,871.7	1,560.8	2,457.0	34.0	57.6
71	3,210.9	2,004.3	2,576.4	1,668.6	4,495.2	2,565.6	1,918.7	2,127.0	1,731.3	3,181.5	35.0	49.2
72	1,340.8	1,923.2	1,354.2	1,863.1	1,962.9	2,030.9	2,539.3	2,360.5	2,937.1	2,102.3	36.5	53.8
73	3,127.9	1,351.6	3,079.8	2,871.4	2,653.0	1,980.6	2,153.6	1,920.5	1,592.5	2,356.6	32.6	55.4
74	1,259.8	2,326.8	3,090.1	4,451.1	2,400.1	1,408.8	2,257.4	1,996.5	2,131.9	1,799.7	32.7	52.6
75	4,167.5	2,239.6	1,994.1	1,570.1	1,653.8	2,134.5	1,982.0	1,700.8	3,157.0	2,226.4	37.1	51.3
76	2,090.1	3,087.7	1,903.6	3,028.6	4,485.4	1,340.8	2,030.1	2,753.8	2,527.3	3,227.7	32.4	56.7
77	3,025.1	1,642.7	1,282.1	1,936.1	4,298.8	2,299.8	2,708.4	1,706.7	3,110.7	2,234.3	32.7	52.0
78	3,271.6	4,268.3	2,132.5	1,447.2	1,847.2	1,889.6	2,378.9	2,087.3	1,922.9	2,686.6	33.1	50.6
79	1,431.0	2,625.8	2,116.2	2,622.7	1,664.0	1,790.3	1,507.6	3,319.1	1,788.2	2,195.0	33.9	57.0
80	1,670.3	3,099.8	2,687.8	2,526.5	1,622.7	1,953.6	2,101.0	2,365.1	3,107.6	1,910.8	33.6	57.8
81	3,345.2	2,120.8	4,194.6	1,559.0	3,200.3	1,426.2	2,607.9	2,239.8	2,474.8	2,316.7	35.7	59.6
82	2,299.2	3,360.4	1,678.9	1,336.6	3,406.5	3,105.8	1,624.5	2,825.5	2,337.0	2,905.3	30.6	55.2
83	1,890.2	1,506.5	2,520.5	2,147.6	1,942.6	3,141.7	1,675.0	2,580.7	3,848.0	2,072.3	34.4	53.8

Stream ID	Q13	Q14	Q15	Q16	Q17	Q18	Q19	Q20	Q21	Q22	RF1	RF2
84	1,401.2	3,136.9	2,011.2	2,727.8	4,294.4	1,625.9	2,455.3	1,548.9	3,441.9	2,798.8	32.6	54.5
85	1,503.4	2,251.2	1,407.4	1,999.7	2,375.4	2,114.0	1,666.7	1,725.7	1,244.6	2,000.5	31.8	53.0
86	1,451.9	3,182.1	2,238.7	2,626.2	3,144.2	1,420.0	2,679.0	2,410.0	4,072.3	2,001.5	33.3	56.0
87	2,461.7	1,954.1	3,759.5	3,075.9	2,127.6	2,231.0	3,231.6	1,527.1	3,940.6	2,228.8	36.7	50.0
88	2,571.4	1,482.6	3,180.9	1,393.4	1,873.6	2,611.6	1,483.9	2,178.9	3,163.1	2,173.0	35.4	53.5
89	2,107.5	2,061.0	1,779.0	1,455.3	2,196.9	4,026.1	2,878.1	3,153.9	3,169.1	3,252.8	40.1	48.7
90	1,453.8	2,004.5	2,828.3	1,865.5	2,818.2	1,811.7	3,970.7	1,789.0	2,022.3	1,538.8	43.1	53.4
91	3,701.6	2,032.9	1,502.5	3,090.8	2,379.0	2,004.5	2,106.8	2,777.4	2,064.9	1,732.6	34.9	53.8
92	2,211.0	1,790.0	3,751.8	1,694.1	2,740.9	3,116.2	1,686.3	1,325.8	2,110.5	2,023.7	35.2	55.0
93	1,371.2	3,805.8	4,218.6	3,078.3	2,834.1	2,828.6	1,933.4	3,160.5	1,283.7	2,669.9	36.8	55.2
94	1,282.1	1,678.3	2,470.1	2,992.9	2,814.5	2,029.1	1,533.8	1,707.4	1,642.5	3,312.9	34.5	51.3
95	1,464.0	1,618.7	1,734.1	2,285.8	3,825.0	2,011.9	3,102.4	1,529.4	4,696.1	1,988.8	32.3	52.9
96	1,784.2	1,751.0	2,140.8	1,999.4	2,263.1	2,306.6	1,820.2	3,131.4	2,576.4	1,365.7	32.5	54.0
97	1,480.0	2,205.2	1,863.6	4,064.1	2,970.6	2,342.9	1,510.7	1,377.4	2,255.7	1,868.8	32.9	52.6
98	1,919.2	3,140.6	1,548.4	3,252.9	2,062.2	1,438.2	1,765.3	2,381.2	2,833.8	2,128.1	31.3	52.9
99	1,641.8	1,574.4	2,079.4	3,809.9	2,227.6	2,255.6	2,064.4	2,177.7	2,236.5	1,475.1	31.4	52.1
100	2,981.2	4,254.5	1,503.3	3,104.8	2,197.0	1,554.2	1,754.7	2,536.0	2,236.5	1,780.2	32.5	52.7
101	1,303.1	2,663.9	3,255.5	3,180.0	2,256.3	1,453.8	1,974.1	2,053.9	1,502.3	2,959.2	34.8	51.2
102	2,651.8	2,973.9	3,794.5	4,318.4	2,858.2	3,135.9	2,161.5	1,556.1	1,455.0	3,299.0	36.9	55.0
103	1,977.7	3,769.6	2,053.2	1,326.6	3,307.4	1,413.7	2,241.1	4,363.1	2,954.1	1,636.1	37.9	55.7
104	2,916.5	3,791.0	1,532.7	4,379.2	3,276.6	2,242.7	1,836.2	1,957.2	2,172.5	2,287.8	36.7	53.8
105	1,979.1	2,549.4	3,902.6	2,173.0	1,980.3	4,360.2	1,390.5	1,516.7	2,329.3	2,100.3	40.2	50.3
106	2,137.5	2,682.6	1,968.8	2,935.0	2,121.5	3,114.6	1,634.8	1,980.2	3,207.8	1,502.3	34.5	54.8
107	3,186.3	3,160.0	1,964.0	2,086.6	1,781.8	4,378.2	2,135.6	1,589.5	2,105.1	1,549.8	37.5	49.7
108	4,587.7	2,019.3	1,546.7	2,987.9	1,873.9	1,950.5	1,565.0	3,155.8	3,166.4	3,245.8	36.6	53.6
109	2,339.9	4,474.7	1,451.7	1,284.0	3,778.2	1,646.0	2,755.9	1,746.0	3,293.4	2,145.6	36.9	54.5
110	2,135.0	2,402.1	1,416.5	2,132.4	1,699.6	3,137.5	1,608.2	2,045.5	3,182.5	3,776.6	40.3	55.6
111	1,403.1	1,532.7	1,413.2	1,342.6	2,102.1	2,351.9	2,012.4	2,217.0	1,494.5	2,836.6	32.0	56.3
112	3,141.3	2,014.5	2,848.0	1,426.4	3,835.4	2,041.8	2,086.7	2,096.8	1,354.5	3,141.1	35.7	50.6
113	1,581.7	1,811.2	1,569.3	2,223.1	1,481.3	1,295.5	2,920.5	2,151.6	3,057.3	3,202.8	35.8	49.6
114	3,120.2	1,497.6	4,714.2	3,242.5	2,010.3	1,962.3	2,018.5	2,053.6	1,377.2	2,148.4	33.0	54.1
115	1,612.1	1,892.9	4,722.6	3,837.0	2,228.9	1,550.7	2,184.5	2,047.2	1,894.3	1,811.3	32.4	63.0
116	3,672.1	1,870.2	1,995.8	1,533.3	1,581.5	2,027.1	1,973.2	1,696.8	3,433.2	2,372.9	34.0	53.3
117	2,382.9	4,695.2	1,854.1	3,245.6	3,838.0	1,642.9	2,026.7	2,420.2	2,717.4	3,184.3	34.0	57.3
118	3,329.1	1,671.8	1,489.6	2,036.4	3,749.5	1,937.1	3,410.0	1,462.0	3,066.0	2,164.2	33.0	50.1
119	4,860.8	3,698.1	2,210.0	1,679.0	1,490.1	2,298.3	2,293.5	3,189.9	1,803.4	2,481.9	32.3	56.2
120	1,514.0	2,350.5	1,976.1	1,939.8	1,514.4	1,859.5	1,777.2	4,908.8	1,423.4	2,386.5	36.3	56.2
121	1,413.7	3,073.3	2,449.1	2,799.1	1,685.7	2,042.0	1,615.0	1,994.8	3,066.0	1,853.8	33.7	55.5
122	5,107.1	2,164.9	3,644.5	1,448.3	3,189.4	1,617.9	3,692.5	2,232.7	2,708.1	2,236.2	35.2	49.9
123	2,210.0	5,038.2	1,651.1	1,284.6	3,472.3	3,005.0	1,668.3	2,454.0	2,315.2	2,799.8	34.9	53.7
124	1,310.2	1,609.6	2,815.5	2,117.9	2,240.4	3,174.1	1,570.1	1,914.7	5,402.2	2,252.6	32.6	53.1
125	1,433.6	3,116.1	2,455.4	2,379.4	3,873.2	1,730.5	2,333.1	1,663.2	3,743.1	2,655.8	33.1	57.1
126	1,564.6	2,326.0	1,335.1	2,086.5	2,289.1	1,904.2	1,689.3	1,422.9	1,385.0	2,140.4	35.8	52.2
127	1,514.0	3,048.8	2,203.6	2,712.2	3,434.9	1,675.5	2,454.3	3,309.8	3,626.4	2,129.8	36.4	52.3
128	2,727.8	2,209.5	3,729.0	3,321.2	2,068.8	1,784.9	3,190.6	1,630.1	5,106.5	2,304.2	40.0	51.0
Min	77.9	6.1	10.5	14.6	52.0	188.4	61.7	22.1	192.2	30.0	30.6	40.9
Avg	2,206.8	2,504.5	2,395.0	2,314.3	2,611.6	2,185.5	2,085.1	2,146.2	2,455.4	2,321.9	35.3	53.3
Max	5,107.1	5,038.2	4,871.0	4,650.8	5,226.9	4,378.2	3,970.7	4,908.8	5,402.2	4,683.0	43.1	63.0