



SPARC T5-4 Server

TPC-H Rev. 2.16.0
TPC-Pricing 1.7.0

Report Date:
November 25, 2013

Total System Cost

Composite Query per Hour Metric

Price / Performance

\$1,755,709 USD

377,594.3 QphH@10,000GB

\$4.65/QphH@10,000GB

Database Size

Database Manager

Operating System

Other Software

Availability Date

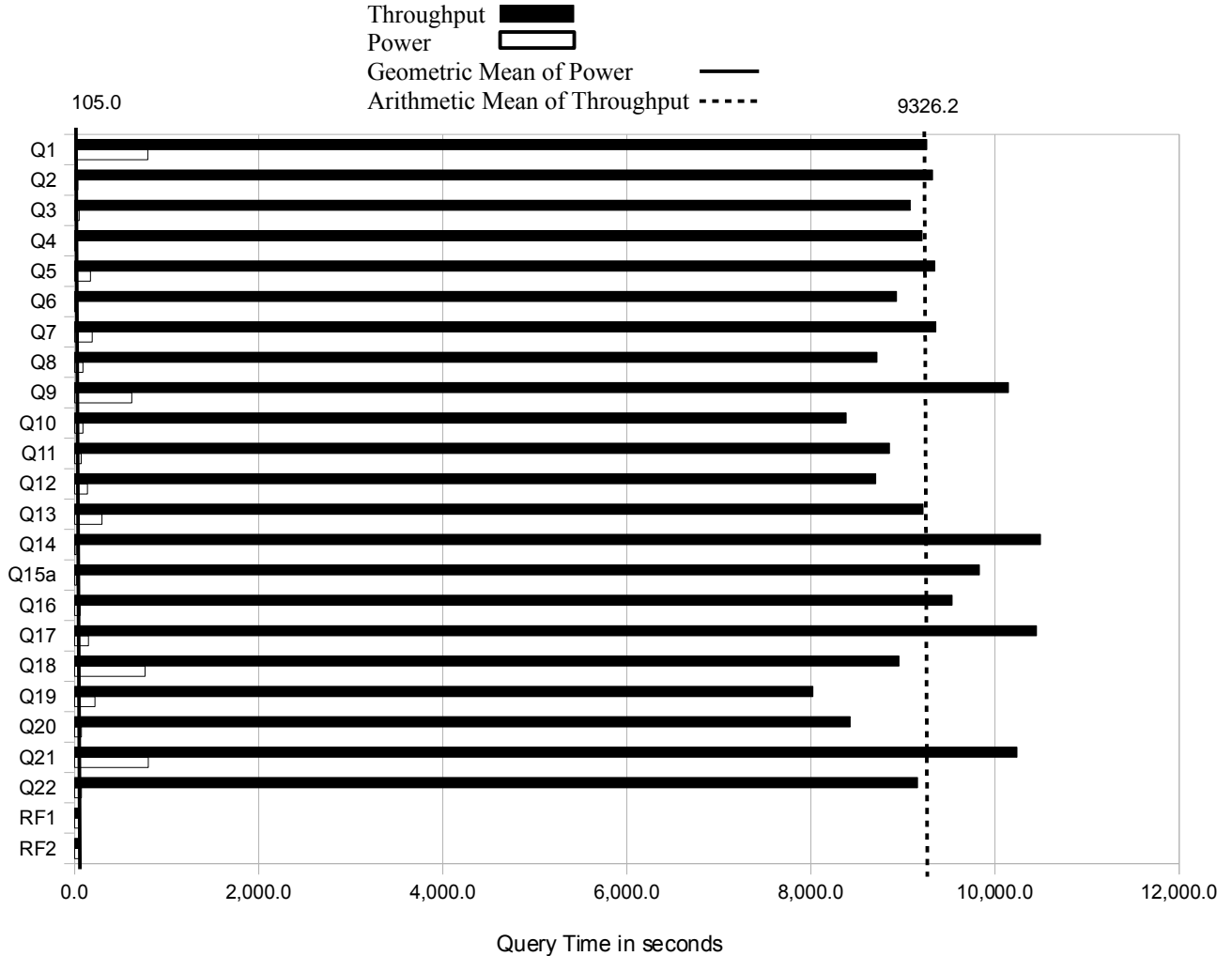
10,000GB

Oracle Database 11g Release 2
Enterprise Edition with
Partitioning

Oracle Solaris 11.1

None

November 25, 2013



Database Load Time = 9:37:54
Load Includes Backup: N
Total Data Storage / Database Size = 60.8
Memory to Database Size Percentage = 20%

Storage Redundancy Levels:
Base Tables: Level Three
Auxiliary Data Structures: Level Three
DBMS Temporary Space: Level Zero
OS and DBMS Software: Level One

System Configuration:

Processors:

Memory:

Disks:

SPARC T5-4 Server

4 SPARC T5 3.6GHz Processors, 64 cores, 512 threads

2TB

24 Sun Server X4-2L w/

6 4TB 3.5" 7.2K RPM SAS disks

4 800GB F80 Flash Accelerator PCIe

2 600GB 10K SAS Internal (not included in Total Storage Calculations)

2 300GB 10K SAS Internal for the T5-4 (not included in Total Storage Calculation)

607,963.2GB (GB = 1024*1024*1024 bytes)

Total Storage:



SPARC T5-4 Server

TPC-H Rev. 2.16.0
TPC-Pricing 1.7.0

Report Date:
November 25, 2013

Description	Part Number	Source	Unit Price	Qty	Ext. Price	3 Yr. Maint.
Server Hardware						
SPARC T5-4 Server, base chassis	7104191	1	35,300	1	35,300	
2 SPARC T5 3.6GHz 16-core processors	7104194	1	33,856	2	67,712	
One 32GB DDR3-1066 registered DIMM	7104200	1	2,000	64	128,000	
300GB 2.5" 10K RPM SAS-2 HDD (factory install)	7105211	1	345	2	690	
Sun Storage 16Gb/s FC PCIe HBA, dual port, Qlogic	7101673	1	1,696	12	20,352	
2 Sun Storage 16Gb/s FC optics, SR, Qlogic	7101675	1	960	12	11,520	
Power Cord, 2.5M, C20 plug	SELY9P31Z	1	29	2	58	
Sun Server X4-2; base chassis	7106599	1	2,620	1	2,620	
Oracle Solaris 11.1 Pre-Install (factory install)	7100734	1	0	1	0	
8GB DDR3-1600 DIMM (factory install)	7100730	1	152	2	304	
Sun Storage 6 Gb/s SAS PCIe HBA, Internal; 8 Port	SG-SAS6-INT-Z	1	270	1	270	
Four 2.5" drive slots and 1 DVD-RW disk cage	7102740	1	508	1	508	
Heatsink (factory install)	7102758	1	20	1	20	
PCIe filler panel (factory install)	7102748	1	2	3	6	
Single processor I/O cover kit (factory install)	7104900	1	10	1	10	
Power Cord North America, 2.5M, 5-15P plug	333A-25-15-NEMA	1	13	2	26	
600GB 10K RPM 2.5" SAS-2 HDD w/ bracket	RA-SS2CF-600G10K2	1	615	1	615	
Intel® Xeon® E5-2609 v2 4-core 2.5GHz (factory install)	7106545	1	536	1	536	
Logitech MK120 – Keyboard & Mouse Combo (+2 spares)	2124292	2	17	3	51	
Acer V196HQLAb - LED 18.5" (+ 2 spares)	2973003	2	85	3	255	
Server Hardware Subtotal					268,853	0
Storage						
Sun Server X4-2L; base chassis	7106601	1s	3,306	24	79,344	
Oracle Solaris 11.1 preinstall	7100734	1	0	24	0	
600GB 10K RPM 2.5" SAS-2 HDD w/ bracket	RA-SS2CF-600G10K2	1	615	48	29,520	
4TB 7.2K RPM 2.5" SAS-2 HDD w/ bracket	7106637	1s	858	144	123,552	
Intel® Xeon® E5-2609 v2 4-core 2.5GHz (factory install)	7106545	1s	536	48	25,728	
8GB DDR3-1600 DIMM	7100730	1	152	48	7,296	
StorageTek 8Gb/s FC PCIe HBA dual port Qlogic	SG-PCIE2FC-QF8-Z	1	2,399	24	57,576	
Sun Storage 6Gb/s SAS PCIe HBA, Internal; 8 Port	SG-SAS6-INT-Z	1	270	24	6,480	
Flash Accelerator F80 PCIe Card: 800GB eMLC	7107091	1s	4,500	96	432,000	
Heat Sink (factory install)	7102745	1	28	48	1,344	
12 LFF slot disk cage and 2 SFF rear slot disk cage	7102743	1	1,108	24	26,592	
Power cord North America, 2.5M, 5-15P plug	333A-25-15-NEMA	1	13	48	624	
5M LC to LC FC cable (+10% spare)	X9733A-Z-N	1	80	80	6,400	
Brocade 6510 Fibre Channel Swith w/ 24 16Gb/s activated	7103553	1	26,046	2	52,092	
Brocade 6510 Activation Permit for 12 8Gb/s SFPs	7103555	1	12,741	2	25,482	
Brocade 8Gb/s SFP short wave optic module	SGXSWBROSFP8GSWS-N	1	399	24	9,576	
Power cord; Sun Rack jumper, 2M, C14 plug, C13 connector	X333V-20-15-C14-N	1	25	4	100	
Rack rail kit	7103770	1	282	2	564	
Sun Rack II 42U	SR-1242E	1	2,849	2	5,698	
PDU 15kVA, Single Phase, LV	SR-15K-L630-N	1	1,200	4	4,800	
Jumper Cable Kit SunRack II – 20 C13 cables	SR-JUMPKIT-N	1	198	2	396	
Storage Subtotal					895,164	0
Server Software						
Oracle Solaris 11.1, Oracle Solaris Studio 12	7104202	1	0	1	0	
Oracle Solaris Development Tools Support	B59320	1	1,200	3		3,600
Oracle Database 11g Release 2 Enterprise Edition, Per Processor for 3 years (for 32 processors)		1	23,750	32	760,000	
Oracle Partitioning, Per Processor for 3 years (for 32 processors)		1	5,750	32	184,000	
Oracle Incident Server Support Package (for 3 years)		1	2,300	3		6,900
Server Software Subtotal					944,000	10,500
Oracle Premier Hardware Support	Q-PREM-SPRT-SYS	1	139,645	3		418,936
			Totals		2,108,017	429,436
Total Oracle Software, Hardware and Maintenance Discount		1			(781,744)	
			3 Yr. Cost		\$1,755,709	
			QpH @10,000GB		377,594.3	
			\$/QpH @10,000GB		\$4.65	

Audited by Francois Raab of InfoSizing, Inc.

Pricing Sources

1. Oracle America
2. CDW

1s – One or more components of the measured configuration have been substituted in the priced configuration. See the FDR for details

Oracle's discounts are based upon US list prices and for similar quantities and configurations. A total discount of 30.9% has been applied to all Oracle hardware, software and services based on the total value and quantities of the components of the configuration, including full payment of all components and maintenance.

Prices used in TPC Benchmarks reflect the actual prices a customer would pay for a one-time purchase of the stated components. Individually negotiated discounts are not permitted. Special prices based on assumptions about past or future purchases are not permitted. All discounts reflect standard pricing policies for the listed components. For complete details, see the pricing section of the TPC benchmark specifications. If you find that stated prices are not available according to these terms, please inform the TPC at pricing@tpc.org. Thank you.



SPARC T5-4 Server

TPC-H Rev. 2.16.0
TPC-Pricing 1.7.0

Report Date:
November 25, 2013

Numerical Quantities

Measurement Results:

Database Scale Factor	= 10,000GB
Total Data Storage / Database Size	= 60.8
Start of database load time	= 11/03/13 01:25:08
End of database load time	= 11/03/13 11:03:02
Database Load Time	= 9:37:54
Query Streams for Throughput Test	= 128
TPC-H Power	= 342,714.1
TPC-H Throughput	= 416,024.4
TPC-H Composite Query-per-Hour Rating (QphH@10,000GB)	= 377,594.3
Total System Price Over 3 Years	= \$1,755,709
TPC-H Price/Performance Metric (\$/QphH@10,000GB)	= \$4.65

Measurement Intervals:

Measurement Interval in Throughput Test (Ts)	= 243,678 seconds
--	-------------------

Duration of Stream Execution:

Power Run	Seed	RF1 Start	Query Start	RF2 Start	Duration
		RF1 End	Query End	RF2 End	
	1103110302	11/3/13 11:03:02	11/3/13 11:04:04	11/3/13 12:23:48	1:21:45
		11/3/13 11:04:04	11/3/13 12:23:48	11/3/13 12:24:48	

Throughput Stream	Seed	Query Start Query End	Duration	RF1 Start RF1 End	RF2 Start RF2 End
1	1103110303	11/3/13 12:25:14	55:08:35	11/6/13 3:48:30	11/6/13 3:49:25
		11/5/13 19:33:49		11/6/13 3:49:25	11/6/13 3:50:25
2	1103110304	11/3/13 12:25:14	54:53:55	11/6/13 3:50:25	11/6/13 3:51:17
		11/5/13 19:19:09		11/6/13 3:51:17	11/6/13 3:52:19
3	1103110305	11/3/13 12:25:14	55:08:31	11/6/13 3:52:19	11/6/13 3:53:11
		11/5/13 19:33:45		11/6/13 3:53:11	11/6/13 3:54:13
4	1103110306	11/3/13 12:25:14	55:12:37	11/6/13 3:54:13	11/6/13 3:55:05
		11/5/13 19:37:51		11/6/13 3:55:05	11/6/13 3:56:07
5	1103110307	11/3/13 12:25:14	55:08:30	11/6/13 3:56:07	11/6/13 3:57:02
		11/5/13 19:33:44		11/6/13 3:57:02	11/6/13 3:58:04
6	1103110308	11/3/13 12:25:14	55:16:55	11/6/13 3:58:04	11/6/13 3:58:59
		11/5/13 19:42:09		11/6/13 3:58:59	11/6/13 4:00:00
7	1103110309	11/3/13 12:25:14	55:26:46	11/6/13 4:00:00	11/6/13 4:00:56
		11/5/13 19:52:00		11/6/13 4:00:56	11/6/13 4:01:57
8	1103110310	11/3/13 12:25:14	55:11:04	11/6/13 4:01:57	11/6/13 4:02:55
		11/5/13 19:36:18		11/6/13 4:02:55	11/6/13 4:03:56
9	1103110311	11/3/13 12:25:14	55:13:49	11/6/13 4:03:56	11/6/13 4:04:52
		11/5/13 19:39:03		11/6/13 4:04:52	11/6/13 4:05:53
10	1103110312	11/3/13 12:25:14	55:16:51	11/6/13 4:05:53	11/6/13 4:06:47

Throughput Stream	Seed	Query Start Query End	Duration	RF1 Start RF1 End	RF2 Start RF2 End
		11/5/13 19:42:05		11/6/13 4:06:47	11/6/13 4:07:47
11	1103110313	11/3/13 12:25:14	55:43:05	11/6/13 4:07:47	11/6/13 4:08:42
		11/5/13 20:08:19		11/6/13 4:08:42	11/6/13 4:09:42
12	1103110314	11/3/13 12:25:14	55:36:04	11/6/13 4:09:42	11/6/13 4:10:37
		11/5/13 20:01:18		11/6/13 4:10:37	11/6/13 4:11:38
13	1103110315	11/3/13 12:25:14	55:01:15	11/6/13 4:11:38	11/6/13 4:12:33
		11/5/13 19:26:29		11/6/13 4:12:33	11/6/13 4:13:35
14	1103110316	11/3/13 12:25:14	55:26:47	11/6/13 4:13:35	11/6/13 4:14:31
		11/5/13 19:52:01		11/6/13 4:14:30	11/6/13 4:15:32
15	1103110317	11/3/13 12:25:14	55:36:01	11/6/13 4:15:32	11/6/13 4:16:31
		11/5/13 20:01:15		11/6/13 4:16:31	11/6/13 4:17:34
16	1103110318	11/3/13 12:25:14	55:43:12	11/6/13 4:17:34	11/6/13 4:18:33
		11/5/13 20:08:26		11/6/13 4:18:33	11/6/13 4:19:35
17	1103110319	11/3/13 12:25:14	55:16:48	11/6/13 4:19:35	11/6/13 4:20:33
		11/5/13 19:42:02		11/6/13 4:20:33	11/6/13 4:21:35
18	1103110320	11/3/13 12:25:15	55:34:43	11/6/13 4:21:35	11/6/13 4:22:34
		11/5/13 19:59:58		11/6/13 4:22:34	11/6/13 4:23:37
19	1103110321	11/3/13 12:25:15	54:54:42	11/6/13 4:23:37	11/6/13 4:24:34
		11/5/13 19:19:57		11/6/13 4:24:34	11/6/13 4:25:37
20	1103110322	11/3/13 12:25:15	55:03:53	11/6/13 4:25:37	11/6/13 4:26:36
		11/5/13 19:29:08		11/6/13 4:26:36	11/6/13 4:27:38
21	1103110323	11/3/13 12:25:15	55:48:38	11/6/13 4:27:38	11/6/13 4:28:38
		11/5/13 20:13:53		11/6/13 4:28:38	11/6/13 4:29:40
22	1103110324	11/3/13 12:25:15	55:17:52	11/6/13 4:29:40	11/6/13 4:30:41
		11/5/13 19:43:07		11/6/13 4:30:41	11/6/13 4:31:43
23	1103110325	11/3/13 12:25:15	55:16:58	11/6/13 4:31:43	11/6/13 4:32:44
		11/5/13 19:42:13		11/6/13 4:32:44	11/6/13 4:33:46
24	1103110326	11/3/13 12:25:15	55:37:54	11/6/13 4:33:46	11/6/13 4:34:47
		11/5/13 20:03:09		11/6/13 4:34:47	11/6/13 4:35:49
25	1103110327	11/3/13 12:25:15	55:44:59	11/6/13 4:35:49	11/6/13 4:36:43
		11/5/13 20:10:14		11/6/13 4:36:43	11/6/13 4:37:45
26	1103110328	11/3/13 12:25:15	55:54:15	11/6/13 4:37:45	11/6/13 4:38:39
		11/5/13 20:19:30		11/6/13 4:38:39	11/6/13 4:39:42
27	1103110329	11/3/13 12:25:15	55:43:08	11/6/13 4:39:42	11/6/13 4:40:36
		11/5/13 20:08:23		11/6/13 4:40:36	11/6/13 4:41:38
28	1103110330	11/3/13 12:25:15	55:36:05	11/6/13 4:41:38	11/6/13 4:42:33
		11/5/13 20:01:20		11/6/13 4:42:33	11/6/13 4:43:35
29	1103110331	11/3/13 12:25:15	55:52:23	11/6/13 4:43:35	11/6/13 4:44:28
		11/5/13 20:17:38		11/6/13 4:44:28	11/6/13 4:45:29
30	1103110332	11/3/13 12:25:15	56:10:52	11/6/13 4:45:29	11/6/13 4:46:30
		11/5/13 20:36:07		11/6/13 4:46:30	11/6/13 4:47:32
31	1103110333	11/3/13 12:25:15	55:44:59	11/6/13 4:47:32	11/6/13 4:48:35
		11/5/13 20:10:14		11/6/13 4:48:35	11/6/13 4:49:38
32	1103110334	11/3/13 12:25:15	55:45:45	11/6/13 4:49:38	11/6/13 4:50:41
		11/5/13 20:11:00		11/6/13 4:50:41	11/6/13 4:51:44
33	1103110335	11/3/13 12:25:15	55:45:47	11/6/13 4:51:44	11/6/13 4:52:47
		11/5/13 20:11:02		11/6/13 4:52:47	11/6/13 4:53:52

Throughput Stream	Seed	Query Start Query End	Duration	RF1 Start RF1 End	RF2 Start RF2 End
34	1103110336	11/3/13 12:25:15	55:50:22	11/6/13 4:53:52	11/6/13 4:54:55
		11/5/13 20:15:37		11/6/13 4:54:55	11/6/13 4:55:58
35	1103110337	11/3/13 12:25:16	55:43:45	11/6/13 4:55:58	11/6/13 4:56:57
		11/5/13 20:09:01		11/6/13 4:56:57	11/6/13 4:57:59
36	1103110338	11/3/13 12:25:16	55:32:42	11/6/13 4:57:59	11/6/13 4:58:58
		11/5/13 19:57:58		11/6/13 4:58:58	11/6/13 5:00:01
37	1103110339	11/3/13 12:25:16	55:47:50	11/6/13 5:00:01	11/6/13 5:01:01
		11/5/13 20:13:06		11/6/13 5:01:01	11/6/13 5:02:02
38	1103110340	11/3/13 12:25:16	56:10:15	11/6/13 5:02:02	11/6/13 5:03:03
		11/5/13 20:35:31		11/6/13 5:03:03	11/6/13 5:04:03
39	1103110341	11/3/13 12:25:16	55:49:16	11/6/13 5:04:04	11/6/13 5:05:04
		11/5/13 20:14:32		11/6/13 5:05:04	11/6/13 5:06:06
40	1103110342	11/3/13 12:25:16	55:49:18	11/6/13 5:06:06	11/6/13 5:07:05
		11/5/13 20:14:34		11/6/13 5:07:05	11/6/13 5:08:08
41	1103110343	11/3/13 12:25:16	55:55:44	11/6/13 5:08:08	11/6/13 5:09:05
		11/5/13 20:21:00		11/6/13 5:09:05	11/6/13 5:10:07
42	1103110344	11/3/13 12:25:16	55:50:22	11/6/13 5:10:08	11/6/13 5:11:06
		11/5/13 20:15:38		11/6/13 5:11:06	11/6/13 5:12:08
43	1103110345	11/3/13 12:25:16	55:51:50	11/6/13 5:12:08	11/6/13 5:13:04
		11/5/13 20:17:06		11/6/13 5:13:04	11/6/13 5:14:07
44	1103110346	11/3/13 12:25:16	55:55:44	11/6/13 5:14:07	11/6/13 5:15:05
		11/5/13 20:21:00		11/6/13 5:15:05	11/6/13 5:16:08
45	1103110347	11/3/13 12:25:16	55:51:48	11/6/13 5:16:08	11/6/13 5:17:14
		11/5/13 20:17:04		11/6/13 5:17:14	11/6/13 5:18:18
46	1103110348	11/3/13 12:25:16	55:50:26	11/6/13 5:18:18	11/6/13 5:19:23
		11/5/13 20:15:42		11/6/13 5:19:23	11/6/13 5:20:26
47	1103110349	11/3/13 12:25:16	63:23:15	11/6/13 5:20:26	11/6/13 5:21:27
		11/6/13 3:48:31		11/6/13 5:21:27	11/6/13 5:22:29
48	1103110350	11/3/13 12:25:16	56:04:46	11/6/13 5:22:29	11/6/13 5:23:34
		11/5/13 20:30:02		11/6/13 5:23:34	11/6/13 5:24:37
49	1103110351	11/3/13 12:25:16	55:56:18	11/6/13 5:24:37	11/6/13 5:25:40
		11/5/13 20:21:34		11/6/13 5:25:40	11/6/13 5:26:44
50	1103110352	11/3/13 12:25:16	56:05:57	11/6/13 5:26:44	11/6/13 5:27:39
		11/5/13 20:31:13		11/6/13 5:27:39	11/6/13 5:28:42
51	1103110353	11/3/13 12:25:17	56:08:56	11/6/13 5:28:42	11/6/13 5:29:38
		11/5/13 20:34:13		11/6/13 5:29:38	11/6/13 5:30:42
52	1103110354	11/3/13 12:25:17	56:03:43	11/6/13 5:30:42	11/6/13 5:31:40
		11/5/13 20:29:00		11/6/13 5:31:40	11/6/13 5:32:42
53	1103110355	11/3/13 12:25:17	55:50:29	11/6/13 5:32:42	11/6/13 5:33:39
		11/5/13 20:15:46		11/6/13 5:33:39	11/6/13 5:34:41
54	1103110356	11/3/13 12:25:17	56:14:31	11/6/13 5:34:41	11/6/13 5:35:39
		11/5/13 20:39:48		11/6/13 5:35:39	11/6/13 5:36:41
55	1103110357	11/3/13 12:25:17	56:34:49	11/6/13 5:36:41	11/6/13 5:37:44
		11/5/13 21:00:06		11/6/13 5:37:44	11/6/13 5:38:47
56	1103110358	11/3/13 12:25:17	56:34:24	11/6/13 5:38:47	11/6/13 5:39:48
		11/5/13 20:59:41		11/6/13 5:39:48	11/6/13 5:40:53
57	1103110359	11/3/13 12:25:17	56:34:26	11/6/13 5:40:53	11/6/13 5:41:56

Throughput Stream	Seed	Query Start Query End	Duration	RF1 Start RF1 End	RF2 Start RF2 End
		11/5/13 20:59:43		11/6/13 5:41:56	11/6/13 5:43:00
58	1103110360	11/3/13 12:25:17	55:59:18	11/6/13 5:43:00	11/6/13 5:44:02
		11/5/13 20:24:35		11/6/13 5:44:02	11/6/13 5:45:05
59	1103110361	11/3/13 12:25:17	56:48:58	11/6/13 5:45:05	11/6/13 5:46:07
		11/5/13 21:14:15		11/6/13 5:46:07	11/6/13 5:47:10
60	1103110362	11/3/13 12:25:17	55:55:45	11/6/13 5:47:10	11/6/13 5:48:13
		11/5/13 20:21:02		11/6/13 5:48:13	11/6/13 5:49:12
61	1103110363	11/3/13 12:25:17	56:41:54	11/6/13 5:49:12	11/6/13 5:50:13
		11/5/13 21:07:11		11/6/13 5:50:13	11/6/13 5:51:15
62	1103110364	11/3/13 12:25:17	56:15:05	11/6/13 5:51:15	11/6/13 5:52:15
		11/5/13 20:40:22		11/6/13 5:52:15	11/6/13 5:53:17
63	1103110365	11/3/13 12:25:17	56:17:29	11/6/13 5:53:17	11/6/13 5:54:18
		11/5/13 20:42:46		11/6/13 5:54:18	11/6/13 5:55:20
64	1103110366	11/3/13 12:25:17	56:38:04	11/6/13 5:55:20	11/6/13 5:56:21
		11/5/13 21:03:21		11/6/13 5:56:21	11/6/13 5:57:22
65	1103110367	11/3/13 12:25:17	56:40:18	11/6/13 5:57:23	11/6/13 5:58:19
		11/5/13 21:05:35		11/6/13 5:58:19	11/6/13 5:59:21
66	1103110368	11/3/13 12:25:17	56:40:18	11/6/13 5:59:21	11/6/13 6:00:17
		11/5/13 21:05:35		11/6/13 6:00:17	11/6/13 6:01:18
67	1103110369	11/3/13 12:25:17	56:47:26	11/6/13 6:01:18	11/6/13 6:02:14
		11/5/13 21:12:43		11/6/13 6:02:14	11/6/13 6:03:16
68	1103110370	11/3/13 12:25:18	56:21:09	11/6/13 6:03:16	11/6/13 6:04:12
		11/5/13 20:46:27		11/6/13 6:04:12	11/6/13 6:05:14
69	1103110371	11/3/13 12:25:18	57:28:01	11/6/13 6:05:14	11/6/13 6:06:10
		11/5/13 21:53:19		11/6/13 6:06:10	11/6/13 6:07:11
70	1103110372	11/3/13 12:25:18	56:38:34	11/6/13 6:07:11	11/6/13 6:08:11
		11/5/13 21:03:52		11/6/13 6:08:11	11/6/13 6:09:13
71	1103110373	11/3/13 12:25:18	57:00:13	11/6/13 6:09:13	11/6/13 6:10:12
		11/5/13 21:25:31		11/6/13 6:10:12	11/6/13 6:11:14
72	1103110374	11/3/13 12:25:18	56:10:11	11/6/13 6:11:14	11/6/13 6:12:13
		11/5/13 20:35:29		11/6/13 6:12:13	11/6/13 6:13:16
73	1103110375	11/3/13 12:25:18	56:21:45	11/6/13 6:13:16	11/6/13 6:14:14
		11/5/13 20:47:03		11/6/13 6:14:14	11/6/13 6:15:16
74	1103110376	11/3/13 12:25:18	57:28:02	11/6/13 6:15:16	11/6/13 6:16:17
		11/5/13 21:53:20		11/6/13 6:16:17	11/6/13 6:17:18
75	1103110377	11/3/13 12:25:18	57:02:05	11/6/13 6:17:19	11/6/13 6:18:14
		11/5/13 21:27:23		11/6/13 6:18:14	11/6/13 6:19:16
76	1103110378	11/3/13 12:25:18	56:47:48	11/6/13 6:19:16	11/6/13 6:20:13
		11/5/13 21:13:06		11/6/13 6:20:13	11/6/13 6:21:14
77	1103110379	11/3/13 12:25:18	57:55:44	11/6/13 6:21:14	11/6/13 6:22:10
		11/5/13 22:21:02		11/6/13 6:22:10	11/6/13 6:23:11
78	1103110380	11/3/13 12:25:18	57:29:39	11/6/13 6:23:11	11/6/13 6:24:07
		11/5/13 21:54:57		11/6/13 6:24:07	11/6/13 6:25:10
79	1103110381	11/3/13 12:25:18	57:28:06	11/6/13 6:25:10	11/6/13 6:26:06
		11/5/13 21:53:24		11/6/13 6:26:06	11/6/13 6:27:09
80	1103110382	11/3/13 12:25:18	56:39:09	11/6/13 6:27:09	11/6/13 6:28:11
		11/5/13 21:04:27		11/6/13 6:28:11	11/6/13 6:29:12

Throughput Stream	Seed	Query Start Query End	Duration	RF1 Start RF1 End	RF2 Start RF2 End
81	1103110383	11/3/13 12:25:18	57:59:27	11/6/13 6:29:12	11/6/13 6:30:10
		11/5/13 22:24:45		11/6/13 6:30:10	11/6/13 6:31:14
82	1103110384	11/3/13 12:25:18	56:46:13	11/6/13 6:31:14	11/6/13 6:32:13
		11/5/13 21:11:31		11/6/13 6:32:13	11/6/13 6:33:15
83	1103110385	11/3/13 12:25:18	56:47:25	11/6/13 6:33:15	11/6/13 6:34:15
		11/5/13 21:12:43		11/6/13 6:34:15	11/6/13 6:35:16
84	1103110386	11/3/13 12:25:19	57:49:32	11/6/13 6:35:16	11/6/13 6:36:17
		11/5/13 22:14:51		11/6/13 6:36:17	11/6/13 6:37:18
85	1103110387	11/3/13 12:25:19	57:30:29	11/6/13 6:37:18	11/6/13 6:38:21
		11/5/13 21:55:48		11/6/13 6:38:21	11/6/13 6:39:24
86	1103110388	11/3/13 12:25:19	57:01:30	11/6/13 6:39:24	11/6/13 6:40:27
		11/5/13 21:26:49		11/6/13 6:40:27	11/6/13 6:41:29
87	1103110389	11/3/13 12:25:19	56:59:38	11/6/13 6:41:29	11/6/13 6:42:33
		11/5/13 21:24:57		11/6/13 6:42:33	11/6/13 6:43:35
88	1103110390	11/3/13 12:25:19	57:16:20	11/6/13 6:43:35	11/6/13 6:44:37
		11/5/13 21:41:39		11/6/13 6:44:36	11/6/13 6:45:40
89	1103110391	11/3/13 12:25:19	57:35:14	11/6/13 6:45:40	11/6/13 6:46:44
		11/5/13 22:00:33		11/6/13 6:46:44	11/6/13 6:47:47
90	1103110392	11/3/13 12:25:19	57:23:05	11/6/13 6:47:47	11/6/13 6:48:41
		11/5/13 21:48:24		11/6/13 6:48:41	11/6/13 6:49:41
91	1103110393	11/3/13 12:25:19	57:21:52	11/6/13 6:49:41	11/6/13 6:50:36
		11/5/13 21:47:11		11/6/13 6:50:36	11/6/13 6:51:37
92	1103110394	11/3/13 12:25:19	57:33:32	11/6/13 6:51:37	11/6/13 6:52:33
		11/5/13 21:58:51		11/6/13 6:52:33	11/6/13 6:53:34
93	1103110395	11/3/13 12:25:19	57:28:09	11/6/13 6:53:34	11/6/13 6:54:31
		11/5/13 21:53:28		11/6/13 6:54:31	11/6/13 6:55:31
94	1103110396	11/3/13 12:25:19	57:30:07	11/6/13 6:55:31	11/6/13 6:56:26
		11/5/13 21:55:26		11/6/13 6:56:26	11/6/13 6:57:28
95	1103110397	11/3/13 12:25:19	57:26:48	11/6/13 6:57:28	11/6/13 6:58:27
		11/5/13 21:52:07		11/6/13 6:58:27	11/6/13 6:59:28
96	1103110398	11/3/13 12:25:19	57:30:28	11/6/13 6:59:28	11/6/13 7:00:27
		11/5/13 21:55:47		11/6/13 7:00:27	11/6/13 7:01:29
97	1103110399	11/3/13 12:25:19	57:29:41	11/6/13 7:01:29	11/6/13 7:02:28
		11/5/13 21:55:00		11/6/13 7:02:28	11/6/13 7:03:31
98	1103110400	11/3/13 12:25:20	58:43:45	11/6/13 7:03:31	11/6/13 7:04:33
		11/5/13 23:09:05		11/6/13 7:04:33	11/6/13 7:05:35
99	1103110401	11/3/13 12:25:20	57:20:41	11/6/13 7:05:35	11/6/13 7:06:35
		11/5/13 21:46:01		11/6/13 7:06:35	11/6/13 7:07:37
100	1103110402	11/3/13 12:25:20	58:00:37	11/6/13 7:07:37	11/6/13 7:08:35
		11/5/13 22:25:57		11/6/13 7:08:35	11/6/13 7:09:38
101	1103110403	11/3/13 12:25:20	58:24:44	11/6/13 7:09:38	11/6/13 7:10:37
		11/5/13 22:50:04		11/6/13 7:10:37	11/6/13 7:11:39
102	1103110404	11/3/13 12:25:21	59:24:51	11/6/13 7:11:39	11/6/13 7:12:39
		11/5/13 23:50:12		11/6/13 7:12:39	11/6/13 7:13:42
103	1103110405	11/3/13 12:25:21	59:31:37	11/6/13 7:13:42	11/6/13 7:14:41
		11/5/13 23:56:58		11/6/13 7:14:41	11/6/13 7:15:44
104	1103110406	11/3/13 12:25:21	57:51:56	11/6/13 7:15:44	11/6/13 7:16:44

Throughput Stream	Seed	Query Start Query End	Duration	RF1 Start RF1 End	RF2 Start RF2 End
		11/5/13 22:17:17		11/6/13 7:16:44	11/6/13 7:17:47
105	1103110407	11/3/13 12:25:22	59:22:04	11/6/13 7:17:47	11/6/13 7:18:44
		11/5/13 23:47:26		11/6/13 7:18:44	11/6/13 7:19:46
106	1103110408	11/3/13 12:25:23	60:02:18	11/6/13 7:19:46	11/6/13 7:20:44
		11/6/13 0:27:41		11/6/13 7:20:44	11/6/13 7:21:47
107	1103110409	11/3/13 12:25:22	58:11:20	11/6/13 7:21:47	11/6/13 7:22:45
		11/5/13 22:36:42		11/6/13 7:22:45	11/6/13 7:23:48
108	1103110410	11/3/13 12:25:22	58:44:52	11/6/13 7:23:48	11/6/13 7:24:45
		11/5/13 23:10:14		11/6/13 7:24:45	11/6/13 7:25:47
109	1103110411	11/3/13 12:25:23	58:29:34	11/6/13 7:25:47	11/6/13 7:26:47
		11/5/13 22:54:57		11/6/13 7:26:47	11/6/13 7:27:49
110	1103110412	11/3/13 12:25:23	58:25:50	11/6/13 7:27:49	11/6/13 7:28:52
		11/5/13 22:51:13		11/6/13 7:28:52	11/6/13 7:29:54
111	1103110413	11/3/13 12:25:23	59:31:01	11/6/13 7:29:54	11/6/13 7:30:59
		11/5/13 23:56:24		11/6/13 7:30:59	11/6/13 7:31:59
112	1103110414	11/3/13 12:25:24	59:32:06	11/6/13 7:31:59	11/6/13 7:33:03
		11/5/13 23:57:30		11/6/13 7:33:03	11/6/13 7:34:06
113	1103110415	11/3/13 12:25:24	58:51:12	11/6/13 7:34:06	11/6/13 7:35:12
		11/5/13 23:16:36		11/6/13 7:35:11	11/6/13 7:36:13
114	1103110416	11/3/13 12:25:24	59:32:38	11/6/13 7:36:13	11/6/13 7:37:16
		11/5/13 23:58:02		11/6/13 7:37:16	11/6/13 7:38:19
115	1103110417	11/3/13 12:25:24	59:08:16	11/6/13 7:38:19	11/6/13 7:39:17
		11/5/13 23:33:40		11/6/13 7:39:17	11/6/13 7:40:19
116	1103110418	11/3/13 12:25:25	58:45:24	11/6/13 7:40:19	11/6/13 7:41:17
		11/5/13 23:10:49		11/6/13 7:41:17	11/6/13 7:42:19
117	1103110419	11/3/13 12:25:25	59:23:16	11/6/13 7:42:19	11/6/13 7:43:16
		11/5/13 23:48:41		11/6/13 7:43:16	11/6/13 7:44:18
118	1103110420	11/3/13 12:25:25	58:54:52	11/6/13 7:44:18	11/6/13 7:45:14
		11/5/13 23:20:17		11/6/13 7:45:14	11/6/13 7:46:16
119	1103110421	11/3/13 12:25:26	59:29:49	11/6/13 7:46:16	11/6/13 7:47:13
		11/5/13 23:55:15		11/6/13 7:47:13	11/6/13 7:48:14
120	1103110422	11/3/13 12:25:26	59:58:13	11/6/13 7:48:14	11/6/13 7:49:12
		11/6/13 0:23:39		11/6/13 7:49:12	11/6/13 7:50:16
121	1103110423	11/3/13 12:25:26	59:30:24	11/6/13 7:50:16	11/6/13 7:51:16
		11/5/13 23:55:50		11/6/13 7:51:16	11/6/13 7:52:19
122	1103110424	11/3/13 12:25:27	59:28:29	11/6/13 7:52:19	11/6/13 7:53:19
		11/5/13 23:53:56		11/6/13 7:53:19	11/6/13 7:54:21
123	1103110425	11/3/13 12:25:27	58:49:51	11/6/13 7:54:21	11/6/13 7:55:20
		11/5/13 23:15:18		11/6/13 7:55:20	11/6/13 7:56:23
124	1103110426	11/3/13 12:25:27	59:47:24	11/6/13 7:56:23	11/6/13 7:57:23
		11/6/13 0:12:51		11/6/13 7:57:23	11/6/13 7:58:26
125	1103110427	11/3/13 12:25:27	59:46:54	11/6/13 7:58:26	11/6/13 7:59:26
		11/6/13 0:12:21		11/6/13 7:59:26	11/6/13 8:00:28
126	1103110428	11/3/13 12:25:28	60:01:02	11/6/13 8:00:28	11/6/13 8:01:27
		11/6/13 0:26:30		11/6/13 8:01:27	11/6/13 8:02:30
127	1103110429	11/3/13 12:25:28	60:00:13	11/6/13 8:02:30	11/6/13 8:03:30
		11/6/13 0:25:41		11/6/13 8:03:30	11/6/13 8:04:32

Throughput Stream	Seed	Query Start Query End	Duration	RF1 Start RF1 End	RF2 Start RF2 End
128	1103110430	11/3/13 12:25:28	59:18:42	11/6/13 8:04:32	11/6/13 8:05:32
		11/5/13 23:44:10		11/6/13 8:05:32	11/6/13 8:06:32

TPC-H Timing Intervals (in seconds):

Stream ID	Q1	Q2	Q3	Q4	Q5	Q6	Q7	Q8	Q9	Q10	Q11	Q12
0	794.7	35.5	49.8	28.7	172.9	18.5	190.5	91.1	620.2	90.3	71.1	138.5
1	6839.8	5913.7	23333.5	6149.5	13940.9	13746	9477.9	6157.8	6712.7	5555.8	9293.5	7498.7
2	5567.3	13623.8	6742.5	6280.3	10474.1	25.2	5341.8	7703.2	14046.9	9237.2	6926.5	10795.9
3	13129.8	6049.8	6148.1	15318.8	24308.2	13680.1	9339.6	181.8	10240.1	8377.1	5618.7	7394.3
4	5779.4	5237.9	6966.3	6169.8	462.2	12980.9	6624.1	10200.6	8458.7	6294.5	10931.8	14226.5
5	5615.9	5868.6	10584.5	15160.7	6086.4	13921.1	9260.7	5396.1	6676.7	6628.1	10281.1	6275.1
6	5211.1	5815.4	23256	6161.6	6202.7	9323.2	12667	9517.5	14695.2	1438	7758.3	11113.1
7	7402	9100.9	9919.5	8816.7	5686.9	7022.4	5778.9	22346.6	11363.8	5451.4	7414.4	6759.3
8	23587.3	6668.5	7597.7	10441	9085.7	6182.7	7868.4	8860.1	15307.9	5653.7	6166.2	12461.5
9	5772.7	15260.8	9386.4	5275.7	6850.1	14009.2	5567.3	2687.6	7438.6	7745.3	7554.3	6777
10	10512.5	12367	5750.9	5512.5	6279.7	2719.4	14222.7	6975.7	6183	7596	7212.4	9379
11	6154.2	6261.6	6182.6	10408	10856.1	5231.7	7236.3	7901.4	6774.6	8711.2	12866.1	5600.5
12	4142.4	9962.3	5229.1	7646.5	5789.6	12422.2	22131.9	6207.9	9184.9	6583.6	10912.6	14649.4
13	9890.2	10890.6	14090.1	5242.2	6124.3	10083.9	15305.4	5829	6092.7	8664	7641.8	14702.3
14	8708.5	4081.4	5603.6	13946.3	14582.5	6694.4	10075.2	5749	22191.3	7382.8	6345.5	7125.7
15	5368.7	5533.4	7456.6	7036.3	5302.7	6844.4	10992.5	14168.4	23054.7	13779.5	9943.6	12479.5
16	5561.6	9057	21264.8	10399.2	14413.5	14363.4	6966	5775.3	8310.3	10270.3	5952.7	5637.2
17	5499.5	13831.7	4243.2	6363.5	14759.8	6850.4	7930.9	10342.2	9956.9	6429.7	14302.8	6430
18	10257.5	10767.7	6903.9	22176.6	14324.1	12195.8	5179.9	12785.4	5546.8	5832.6	10571.1	5869.5
19	5499.1	12258.8	6203.4	4321.1	9262.7	5682.6	5243.7	6203.1	7405.6	8181.2	6184.8	22390.8
20	8002	6724.1	5640	9265	10733.3	6808.3	6304.7	6041.3	5777	5211.7	5925.6	10519.2
21	8600	7287.7	6730.2	12639.5	5296.1	5640	5286.7	6121.3	7209	7536.5	11058.3	13544.7
22	6153.1	14245.5	6359.7	12249.3	5079	5501.8	6497.7	5541.7	6824.3	8958.3	14594.4	7742.3
23	7417.1	9607.1	7020.6	6472	5685.4	10287.3	6210.7	13904.1	15455.8	5778.9	12342.1	9402.3
24	5668.3	6181.6	21411.8	7632.4	5655.3	12366.6	5881.7	7740.9	10382.1	14316.4	6977.6	6918.8
25	22644.6	12325.9	6275.2	7316.1	7650	6845.7	10789.3	6029.5	7337.4	10106.1	7923.5	5720.5
26	6777.6	21458.6	5634.8	10693	12022.5	5879	6817.7	6264.4	7756.1	7420.2	9226.5	6371.8
27	7417.4	9367	5079.5	12411	6852.8	12672.4	7803.5	11890.1	10652.5	7261	6220.7	5231.9
28	16487.3	6827.6	5913.1	5681.6	5207.9	7395.6	7292.5	5228.3	6933.6	6289.9	7207.9	11949.4
29	14000	5379.9	5276.1	7264.7	11681.4	10205.7	6361.3	21489.4	17334.5	6417.2	7670.5	9741.7
30	8979.1	7504.5	9705.6	6867.8	10982.4	6265.6	6669.4	5707.1	7676.2	10185.4	7382.6	5829
31	12658.5	6344.3	10772	9305.3	7638	5583.8	10823.4	5958.1	21409.5	5795.5	12415.2	6031.4
32	5595.5	7253.2	7748.6	10817.4	7938.5	9668.3	11118.7	17243.7	6295.1	6259.4	5563.1	21662.4
33	7122.6	17147.8	7995.2	7467.1	12478.2	5970.7	10312.6	5474.5	5655.5	9605.2	10863	6537.1
34	7953.5	7245.5	10683.3	9746.3	5592	12687.3	9807.8	5560.9	7868.1	6295.1	16744.3	5649.2
35	6629.2	10905.8	5483.4	6295.1	12754.1	7216.7	6259.4	9795.9	5376.7	12371	7276.6	9895.1
36	7572.7	5086.4	7748.5	10722.7	9653.3	9960.2	16983.4	7398.3	7689	6495.5	6685.9	7033.8
37	5745.7	5640.2	6165.2	5319.2	16654.8	11436.7	9776.5	11027.1	13273.3	8074.2	9990.4	7326.7
38	11470	9687.9	7824	16847	21075.4	13730.9	10525.3	7357.2	7468.6	7252.8	9725.6	5353.1
39	5315.4	7193	8026.4	10913	10032.4	9681.5	21005.3	5796.9	5378.7	7532.5	7087.2	5891.3
40	10492.3	6479.9	12450.1	12404.4	6966	5960.6	6949.5	5499.6	9776.5	7047.2	10266	5580
41	6059.8	20959.5	10323.8	5129.6	5566.9	9423.6	6582.1	10058.2	17603.6	6243.2	6719.5	7494.5

Stream ID	Q1	Q2	Q3	Q4	Q5	Q6	Q7	Q8	Q9	Q10	Q11	Q12
42	6697.2	6630.8	19686.5	7181.1	10849.6	13378.2	10581.9	5365.4	6814.6	5363.2	9936.1	7754.8
43	6059.8	10643.7	5449.2	6292.9	10739.5	8625	5361.1	7669	14158.3	9990.7	6603.7	10119.4
44	13374.3	5320.5	7131.5	16651	20703.4	10584.1	10600.7	8762.7	10713.1	8076	5368.6	7191
45	6075.8	5318.2	6810.7	6925.4	8625.3	10945.2	6880.8	10248.4	8526.7	6681.5	9731.9	13548
46	5363.2	6541.2	9776.5	16656.8	5248.7	10785.9	9753.2	6050.9	7181.1	6585.2	10768	7391.8
47	5243	6090.5	19559.1	7349.3	6683.2	9795.3	9900.5	10423.4	14691.9	9990.9	7800.2	9676.7
48	6219.6	8822.2	9642.3	11987.8	6299.1	7330.2	5607	18698.6	9641.7	5559.5	8891.8	7395.9
49	20182.5	7419.5	7583.6	9692.7	9160.5	6195.5	8837	10769.1	14564.4	5712.5	6892.5	10637.4
50	5606.9	16675	10469.8	5636.7	6938.1	13641.6	5707.5	10889.6	7250.5	7641.4	8839.4	6453.9
51	10395	10469.9	6719	5606.6	7392.6	10742.7	13687.1	6944.8	5279.2	8068.1	7394.4	9894.9
52	7129.8	6305.3	6293.3	10110.6	9661.3	5655.9	7219.8	8080.1	5488.5	9941.7	9956.7	5695.4
53	12328.5	9652.6	5567.3	8021.4	5283	10195.1	17452.7	7468.5	7749.6	6199.2	10295.4	13768.4
54	8802	8674.8	11440.1	5229.3	6403.3	9582.3	16034.8	5844.5	6981.7	12037.4	8855.3	13333.7
55	12158.2	12368.5	5870.9	11221.5	15986.9	8507.3	9651.7	5475.6	18432	7052.6	6321	7052.1
56	5558.9	5852	7693.1	6953.8	5607.1	6008.2	9580.7	11357.7	19359.1	13107.1	12000.5	10879.1
57	13820.8	8763.9	18378.7	9617.2	11065.9	15433.3	6953.7	5489.4	9191.3	8629	5053.8	5853.2
58	5811.6	12981.4	12539.6	6263.4	15651.3	6706.3	7800.4	9823.2	11815.6	7299.1	11302.6	7073.8
59	8624.9	9787.6	6852.8	18612.6	11621.2	10576.5	6377	12316.4	5603	5908.3	12292.5	6360.2
60	6864.4	9892.7	6519.5	12621.4	8868.9	5538.5	5355	7245.4	7583.1	8787.9	7294.3	18892.3
61	9295.1	6122.8	5630.9	8872.7	8536.3	6407.4	6743	8712	6006.6	5050.6	7109.3	10032.1
62	9033.5	7756.5	6861.8	13106.9	5226.5	5672.7	5318.9	5890.5	7067.6	9180.9	9535.4	11610.6
63	6685.7	11469.8	6459.7	10376.6	5208.1	5815.8	6299.1	5702.9	6698.8	11917.4	13003.3	8340.1
64	8235.5	11754.3	7031	6541.5	6418.4	9263	8669.8	13101	16435.5	5338.9	10785	9222.1
65	5320.2	6449.9	18574.8	8517.1	5707.5	10761	13254.5	8303.1	9580.7	15649.3	6479.9	6911.7
66	19994.6	10691.5	6456.9	6838.7	8104.7	6459.9	9777.1	6520.3	8616.9	12302.7	8892.3	6390.6
67	5707.5	18146.8	5607	9532.6	11070.4	6299.1	6549.9	6457.7	7831.7	8928.1	8743.5	6049.9
68	6403.4	9436.9	5226.9	10624.2	6883.6	11902.2	8818.2	11213.7	12957.6	7078.2	6422.9	5801
69	16738.8	7081.1	5022.7	6267.3	5973.9	6906.6	8852.3	6612	5951	13857.9	10991.5	9898.9
70	14102.7	5604.8	4944.4	8697.9	9750.5	11832.1	6731.4	18521.2	16486.4	13959.7	7916.2	9398.2
71	8909.6	9664.7	9806.6	6006.8	9978.6	6735	14232.1	5939.4	7582.4	12232.8	6772.6	5844.1
72	12641.6	13910.6	10820.6	9137.7	8566.4	5604.5	12090.1	5354.5	18418.6	5707.5	10865	6447.7
73	5192.3	7827.9	8108.3	9778.2	8820.1	8674.9	9656.7	16308.1	6403.4	6459.7	5376.6	18778.7
74	10974.7	16231.7	8948.1	8047.2	11967.5	6768.7	12366.1	5812.7	5834.8	8776.2	9920.1	6036.7
75	15535.7	9522.8	9819.2	9803.9	4950.6	12936.3	8636.5	6240.2	8952.2	6423.4	15799.4	6090.5
76	6985.2	9840.9	6083.5	5899.1	12906.1	6877.3	6711.6	9740.3	5315.5	9754.1	9059.3	8863.9
77	10191.1	6332.8	8035.6	9755.1	9750.9	8133.8	16115.4	7048.7	15237.7	6900.1	7037.5	6377.1
78	6701.3	6594.8	5744.1	5609.6	15599.1	8810.7	8909.9	9971.6	13855.6	8875.7	11961.6	7067.1
79	13560.1	8672.1	8469	15658.2	17965.5	13606.5	9738.1	7371.7	10976.8	6784.5	9900	5756.1
80	4948.2	8601.4	15611.7	9656.7	12290.4	9764.3	18067.7	6007.8	5422.9	8108.3	6902	6136.5
81	11640.8	4737.7	13702.7	6751	6345.9	6660.3	7501.7	6516.5	8568.4	6784.5	13886.5	6973.5
82	6027.7	17957.5	9852.2	5315.8	6107.2	9944.1	6405.9	9615.4	15792.2	6451.5	5898.6	8972.6
83	6218.4	5954.2	16736.7	9040.6	9845.3	13008.3	12796.2	5720.3	6587.3	5242.8	9978.2	8186.6
84	5723.7	7230.6	6162.7	6824.1	9271.3	16169.5	6488.5	9000.5	14665.3	12657.9	6406.9	9024.1
85	13948.8	5799.1	10595.5	15536.9	17663.3	9850.6	12502.7	16316	10895.5	8166.6	5778.3	6404.4
86	5675.7	5791.5	5951.1	7313.1	16594.8	7487.1	6748.3	9420.5	9045.6	5499.3	8598	14148.4
87	5239.3	5957.5	8695.9	15436.3	5576.7	9801	10270.3	6119.2	9633.9	6117.8	9911.4	7155.2
88	5594.9	5902.9	16806.4	7273.9	5615	9981	8148.9	12937.7	13859	17326.2	8840.3	8668.5

Stream ID	Q1	Q2	Q3	Q4	Q5	Q6	Q7	Q8	Q9	Q10	Q11	Q12
89	6918.8	8341.5	8184.6	14128.7	5306.9	6858.7	5528.4	16354.7	9016.8	5518.1	9604.5	10825.9
90	16989.5	6949.5	8019.6	9512.8	9723.3	4981.1	9036.7	12803.6	14964.5	5610.9	10704.8	6882.5
91	5748.9	14357.6	12843.8	5842.1	5946	14615.7	5727.7	18817.9	6904.6	7930	9031.1	6747.8
92	12696.6	8029	5153.5	6177.3	10726.6	18705.9	13606.7	6407	6453	8383.8	6953.9	10237.6
93	7256.3	6763.8	4975.1	9515.3	8555.8	6557	10714.6	9181.3	5800.2	9972.1	7149.3	6417.8
94	20228.5	8549.8	6222.1	7969	6462.1	6803.9	15501.5	7430.6	9834.9	6824.1	9015.7	14652.3
95	8294.7	8568.4	11703.3	6292.9	4911	9198.5	13175.3	5759.1	7113.1	13886	8108.9	14019.7
96	14140.8	20268.1	6225.1	11502.9	13061.9	10679	8999.1	5479.8	16742	7006.5	6798.2	6274.1
97	5718	6230.7	7978.7	6112.5	6511.4	7246.8	9547.6	11453	16283.7	14602	12855	7091.5
98	21802.8	8526.9	15981.3	8990.6	10406.5	13943.2	5953.8	5429	10305.6	6672.1	6076.9	6073.4
99	5727.7	13668	20495	6748.8	13064.2	5946.3	7884.6	8687.6	13841.6	7233.8	11631	10565.8
100	8557.7	9306.6	7249.2	16517	11630	6774.1	6319.6	13716	5238.7	5379.6	14044.1	6276.5
101	13424	7008.2	5500.5	20579.6	8282.6	5344.4	6431.2	7053.4	9226.5	9406.6	6919.4	16703
102	10761.3	6541	5307.1	8332.6	5568.2	6021.5	7197.3	16483.8	6165.2	5826.6	7153.3	9110.1
103	11488.2	16672.3	5866.8	13851.4	6077.3	6885.5	5567.1	6238.8	6913.1	9260.5	8840.2	10650.1
104	7132.9	11287.6	6986.7	6950.6	6100.5	5384.2	5647.1	5339.6	6216.8	14215.5	13916.6	9224.2
105	9467.4	13757.7	6313.4	6106.4	5794	7424	16322.5	13883.2	14424.6	5326.7	6935.2	8785.6
106	6578.6	5673.1	15919	9296.9	6416.8	6933.5	21863.8	8634.7	9178.3	14058.6	6169.1	5768
107	17625.8	6972	6909.3	6968.7	9407.6	6362.4	9839.1	5649.3	12638.4	13647	9346.1	6440.5
108	6492	15919.6	5378.9	8684.5	10319.7	5671.1	7396.8	6059.6	9344	9408.6	8589.9	6697.3
109	6130.8	8215.9	6368.1	6812.8	7079.6	13716.9	7938.6	10289.7	14122.2	6908	6508.7	6591.1
110	13977.9	7158.7	6566.9	5303.3	5521.3	6867.7	8481	6595.1	6220	21581.5	13493.6	10445.6
111	15263.3	5398.9	5870.1	16715.5	6046	13506.3	5793.5	15997.4	14967.6	21936.4	9285.8	8616.2
112	10772.4	16697.3	8491.3	5812.6	9673.6	5847.7	22176.1	6087.5	8204.1	13627.2	6991.5	5563.9
113	13915	21990.3	9925.2	8468.2	9291.8	6561	13649.9	6041.2	16885	6075.6	7055.6	6394.5
114	6010.9	16716.1	9260.5	9837	10097.5	6608	8799.3	13603.9	5847.3	6247.9	5478.7	16841.9
115	15580.2	13537.3	9259.9	9212.2	13866.8	5955.8	13328.5	5328.1	5887.7	7651.6	9929.9	5985.1
116	23515	14275.2	9590.9	8777.4	5890.8	13892.5	7648.4	6494.2	9259.9	5823.3	13688.2	6327.8
117	7516.9	8769.4	6219.5	5931.3	13862.6	6768.8	6195.8	8505.9	5897.2	6933.7	16397	7950.2
118	10959.5	6629.9	9260.5	9274.8	8832.9	5875.2	13846.6	6908.1	23216.8	6212.1	7766.5	6182.1
119	6120.1	6831.3	6185	6010.7	13858.8	7306.1	5736	8877.1	13552.7	10883.9	13226.8	7165.2
120	14455.7	5602.6	10608.5	13863.8	15735.2	13937.5	7887.1	7686.8	17829.8	6740.4	8916.9	6333.5
121	5781	16682	23589.3	8600.4	13402.4	8809.5	15912.3	6337.1	5359	9348.6	6994.2	6811.2
122	9218.7	5941	13905	6845	5771.2	6029.1	7364.6	6150.6	5739.9	7080.9	13200.4	6864.1
123	6223.7	15768	8668.5	6008.9	6558.9	8785.2	6253.9	7284.3	13808.6	5951.8	5846.1	14541.9
124	5745.7	5763.7	15268.2	17578.2	9032.9	13302	13983	5671.7	6642.1	6154.7	9567.4	10172.6
125	6279.3	6106.7	6772.9	5900.1	8082.8	23749.4	5980.9	10395.4	14546.4	13086.7	5847.1	5733.1
126	13595.5	5864.8	17380.2	13822.5	15594.5	9340.7	13441.5	23908.2	9544.7	10623.3	6098.7	6384.3
127	6403.5	6296.3	6097.6	8056.7	24183.9	6067.3	6160.1	7514.6	11131.9	5598.2	5171.2	12822.3
128	6098.7	5934.2	5739.9	13643.5	5292	9239.9	9099.3	6219.8	16209.7	6229.9	8751.3	6937.6
Min.	794.7	35.5	49.8	28.7	172.9	18.5	190.5	91.1	620.2	90.3	71.1	138.5
Avg.	9257.5	9319.9	9078.8	9207.1	9345.7	8930.6	9357.7	8716	10144	8382.8	8854.6	8703.9
Max.	23587.3	21990.3	23589.3	22176.6	24308.2	23749.4	22176.1	23908.2	23216.8	21936.4	16744.3	22390.8
Stream ID	Q13	Q14	Q15a	Q16	Q17	Q18	Q19	Q20	Q21	Q22	RF1	RF2
0	297.4	17	20.8	61	150.5	764.2	220.3	74.1	801.7	74.8	61	59.9
1	10606.1	5569.6	8007.9	10507.4	6202.9	15254.3	6440.4	13631.6	1261.1	6413.2	53.4	60.5

Stream ID	Q13	Q14	Q15a	Q16	Q17	Q18	Q19	Q20	Q21	Q22	RF1	RF2
2	6094.7	15318.8	6160	13708.8	24462.6	5895.3	9568.4	5900.9	5824.8	7934.7	52.1	61.9
3	5846.4	7535.8	10584.5	7081.7	9444.5	13598.7	6529.3	5882.2	5266.2	6954.7	51.5	61.7
4	6399.5	15351	9216.9	7653.2	9651.4	5639.2	14057.3	6256	24031.8	6167.9	52.6	61.3
5	8231.5	6129.6	22426.6	9384.9	7035.1	13526.5	13834.1	6229.4	2315.2	7641.2	55.4	61.5
6	13938.5	6360.1	15158.7	5782.7	7112.5	7799.5	7034.1	5842.6	6274.8	10551.8	55.7	61
7	5831.2	5384	7055.1	6585.4	12712.6	2539.4	7666.2	15206.1	14967.4	14595.3	55.3	61.4
8	6399.5	6382.1	14611.6	5164.6	14139.3	6966	2692.7	10589.6	6115.8	5720.8	57.9	60.8
9	22202.3	5544.5	10856.4	6251.3	9215.6	6169.8	10946.1	13936.2	13275.6	6105.3	55.8	60.9
10	7737.1	10588.3	22297.2	5573.9	14052.1	15236.1	6479.7	5416.7	10441	6477.4	54.7	59.7
11	7218.5	22324.3	2723.6	14325	14336.3	15208.7	7316.4	9510.1	5516.6	7919.9	54.8	60.6
12	5451.4	6934	7201.7	14715.6	14308.8	8861.7	7411.4	5791.5	5674.3	8949.8	54.8	60.7
13	6101.4	5763.3	6849.7	8333.4	21260.2	6740.4	5889.5	6192.4	4037.8	12348.9	55.3	62
14	10856.4	5295.9	12588.5	6242	8299.7	9310.7	6434.7	14618.7	7748.2	5725.3	55.1	61.2
15	6363.5	9056.3	10369.3	4165.5	14219.6	7311.3	7520.9	5549.1	7400.8	6243.5	59.7	62.1
16	5583.8	13997.7	5758	9672.4	6428.9	7084.4	6625.9	7869.8	7237.5	12360.8	59	62.4
17	5543	6115.3	12309.1	22151.8	10628	7868.4	5339.6	5801.6	9138.8	7170.1	58.3	62
18	14540.8	4275.2	7244.5	7128.3	7574.6	6493.7	5714.1	7535.6	10025.4	7139.7	58.8	62.4
19	5671.3	14186.1	8827.6	14669.1	10319.3	6263.5	6850.7	6741	10888.4	14427.5	57.6	62.1
20	14178.6	14380.2	22327.3	4433	7260.6	14573	12610.1	6328.4	6395.5	8794	59.1	62
21	6629.1	22114.2	9163.3	9782.8	10766.6	6583.2	12663.2	4708.7	15614.4	5941.6	60.6	62.1
22	14342.6	22257.3	7036.2	4540.6	6494.6	10183	10978.8	5966.1	9205.9	8318.5	60.6	62.1
23	5382.2	12851.5	21260.3	10884	5914.3	6067.2	5454.9	7134.1	7565.3	6920.2	60.7	62.2
24	9056.9	13993.1	5089.7	7306.6	5357.4	12686.1	7362.6	6644.6	11073	10569.3	61.2	61.6
25	17148.3	12784.8	5652.4	9699.9	5747.3	5561.2	7078.1	5457.4	10925	9680	53.5	62.2
26	6291.8	12320	6766	7201.2	6393.7	5814.8	10593.4	12796.6	10535	16218.8	54.4	62.3
27	7416.9	6095.6	10220.3	5570	21482.2	5476.9	7498.8	7058.1	16263.1	10645.7	54.4	62.2
28	9685.3	7536.9	10284.3	11008.6	5782.3	10116.8	6848.6	12316	12754	21416.5	54.2	62.3
29	6669.7	7244.8	6076.3	9674.2	10620.9	10753.9	5692.9	7245.4	6261.9	8079.6	53.6	60.8
30	12514.6	9636.1	7791.9	6508.6	21786.4	12403	5402	5741.2	9664.7	17047.3	60.4	62.4
31	5370.5	6966	7084.9	6755.6	6468.9	9523.5	7865.2	11044.7	17542	7341.5	62.7	63.4
32	10002.1	7220.7	6451.7	12893.1	12419.8	6645.3	7362.8	5325.8	5483.1	9775.5	62.4	63.1
33	5970	12435.1	6497	21706	9890.3	7065.5	5845.5	6994.6	10925	6787.3	63.3	65.2
34	21013.9	12406.2	6736.8	6165.2	7287.2	10922.4	7224.4	5616.5	10055.7	7759.2	62.3	63
35	8014.5	6702.1	6963.7	9994.4	21752.1	5562.8	5582.4	10805	7945.5	17043.2	58.9	62.2
36	9988.7	5637.6	5419.8	5866.5	21055.5	12371	7049.8	5877.2	12758	10907.7	58.8	63
37	8135	20939.6	7532.5	5321.4	6636.6	6953.3	10117.8	7245.5	6728.3	10830	59.7	61.7
38	6422	10483.9	5672.7	10313.7	6024.7	6865.8	5615.7	8127.1	6443.1	7927.6	60.3	60.8
39	6455.2	16711.6	10743.2	8049.6	6238.8	6957	9910.9	12491.3	12686	6858.5	60.6	62.2
40	8603.4	10900.2	20534.4	5903.9	16860.4	5309.6	7601.3	7557.3	8048.2	9766.4	58.2	63.4
41	7796.6	8175.4	5334.6	9705	10808.1	13959.8	7178.2	10946	7193.1	8082	56.9	62.5
42	9747.6	6077.5	8041.9	10465.6	7136.2	16632	6265.6	10739.7	9802.9	5873.1	58.9	61.6
43	6443.1	16707.4	6905.3	10559.3	20781	5334.8	10005.3	7246.2	7235.3	8179.3	56.1	62.4
44	6879.7	7690.8	9776.5	5758.3	10186.7	10614.5	6196.5	6638.4	6113.3	7010.9	58.2	63.1
45	6195.2	16876.8	9749.6	7993.9	10208	5274.7	10880	7268.5	20580.2	5762.4	66.4	63.3
46	8026.4	6905.1	19197.1	10315.4	5974.7	10613.6	13828.8	5939.6	10322.6	7799.2	65	63.4
47	10751.4	6268.6	16661.1	5374.7	6942.6	7965.5	7463.4	5754.9	33456.3	10351.6	60.9	61.9
48	5567.7	5700.4	6706.2	6414.1	10591.8	11081.1	7825.4	16594.1	12148.8	13159.1	64.7	63.3

Stream ID	Q13	Q14	Q15a	Q16	Q17	Q18	Q19	Q20	Q21	Q22	RF1	RF2
49	6303.4	6224.3	15838.1	5609.3	11206.2	6706.2	10720.5	9816.2	5725.7	5579.8	62.9	64.1
50	18699.8	5608.3	9568.7	7215.2	9998.6	6465.7	9884.5	10837	11621.8	6305.7	54.9	62.5
51	7887.6	9656.3	18846.2	5355.7	10989.7	16623.8	6522	6081	10248.7	7330.3	56.3	63.6
52	7379.2	18701.4	10925	12998.8	11076.1	16638.3	6937	11762.9	5811.6	8054	58.1	62.1
53	6059.8	6585.9	7181.1	16732.3	11062.7	9527	7237.8	6733.1	5340.9	10586.2	57.5	61.6
54	7146.3	5322.7	6865.8	8265.2	18627.6	5672.7	7722.3	6421.2	12391.1	10816.6	58.2	62
55	9520.7	5636.6	10196.8	6788.3	9065.3	9102.6	6660.7	13123	7625.1	5870.8	62.3	63.5
56	6303.4	8707.6	9519.1	12468.2	15491.2	8532.7	7688.3	5607.1	9064.9	6323.5	61.1	64.2
57	5853	13015.9	6360.2	12205.4	6314.8	6700	6740.2	8824.5	8532.8	10868.2	63.5	64.3
58	5502.2	6181.7	10056.8	18597.6	10396.3	7942.8	5594.8	5768.1	9024.1	7424.8	61.6	62.8
59	15607.6	12572.3	6716.5	8994.2	8358.9	6739.4	5381.7	9022	10091.6	6120	62.2	62.9
60	5807.8	11469.6	11799.4	13074.5	9745.2	6263.4	6817.4	5787.9	9684.7	15430.9	62.7	59.7
61	11466	15430.9	18787.6	12729.9	8999.2	12951.5	10368.3	6500.6	6439.5	11920.3	60.8	61.6
62	5911.2	18656.4	8679.9	8720.5	12201.1	6403.4	10812.3	12948.9	15451.3	6457.7	60.3	62.1
63	15388.4	18719.7	7096.7	12840.4	7896.2	9503.3	9743.3	5803.8	8872.7	8806.3	60.8	61.6
64	5686.9	10736.3	18719.6	9649	5345.6	12841.8	6209.8	6866.7	8367.8	6663.9	60.7	61.9
65	8725.7	11218.5	5226.8	8617.3	6366	12061.3	7141.3	6538.1	13326.7	9285.4	56.2	61.8
66	16136.9	12204.6	5109.3	9596	5619.2	12949.7	6973.3	6027.2	9584.6	8769.7	56.3	61.3
67	13726.8	10431	7250.8	9041.6	7152.1	5147.4	9804.3	13269.8	11962.6	15734.1	55.3	62.3
68	8108.3	13757.9	8640.3	5950.7	18367.3	5318.9	7957	6857.6	15483.3	9658.5	56.4	61.9
69	9939.3	7951.1	8720.5	9798.1	5841	12310.6	6981.7	10810.2	11902.1	18471.5	55.5	60.9
70	6345.5	6864.6	5865.8	8719.8	9841.3	9850.7	5987.3	6986.4	6543.5	8963.2	60.2	61.7
71	11902.1	9074.5	8472	5613.6	18868.1	10770.5	5596.4	6435.8	8668.5	16106.6	59	62.3
72	5360.7	6941.9	7252.8	6448.8	6405.8	9311.2	8150.4	9639.5	15667.2	7467	59	62.3
73	12393.5	7099.8	13991.9	12177.5	10843.9	6856.4	7106.4	5721.9	5825.7	9502.2	58.7	62.1
74	5781.1	10578.5	14036.4	18842.7	9750	6747.5	6696.8	7006.4	9656.7	6100.4	60.7	61.5
75	18177	9724.3	6985.2	6500.8	7053.8	9725.9	6749.3	5553.1	12113.4	8031.1	55.3	62.1
76	7916.2	14263.3	5986	12339.6	18929.1	5559	6512.5	9919.5	8952	16053.1	57.1	61.3
77	12233.6	5395	5523.6	6568.5	18135.7	9470.7	11834.9	5429.7	13210.1	9824.9	55.8	60.8
78	15695.8	17985.6	7985.9	5849.1	5711.4	7044.9	10052.4	10802.1	6145.7	10004.5	56	63.1
79	6765.6	9845.9	6553.2	7971.9	5895.5	5969.6	6117.8	15716.1	5462.1	8128.6	56.1	62.9
80	6423.4	15600.3	9885.8	8950.6	6605.3	6740	8888.6	10771.6	11902.1	6662.4	61.4	61.7
81	16148.1	9271.4	17565.3	5863.2	15963.2	5762.8	12057.6	9365.7	7939.6	8759.5	58	63.5
82	7968.3	15762.7	5556.8	8621.9	12211.1	12889	7174.6	9882.2	6959.8	9005	58.9	62.1
83	8692.5	5975.4	8705.9	9552.5	7317.5	15492.1	6889.1	8908.2	17323.6	6272.4	59.9	61.5
84	5294.9	15567.4	7277.6	9903.9	17813.7	5350.7	10320.2	7138.9	11683	8196.8	60.6	61
85	6623.8	7875.7	8680.5	6635.8	9994.3	8244.2	7092.6	5632.2	5711.1	7080.5	63.4	62.2
86	6763.8	14332.5	10038.5	8124.5	12839.6	5847.1	10163.1	9665.1	18680.9	6560.3	62.8	62.5
87	8819.1	7352.1	15778.8	12752.7	6381.9	7868.2	13792.1	6452.8	18389.4	7675.5	63.8	61.9
88	9845.3	6887.5	15423.5	5720	6076.1	8382	6894.4	6575.3	10305.6	9114.6	61.7	63.1
89	6535.5	6165.1	6402	7009.8	6948.6	19110.3	8367.2	14327.7	12001.9	13858.1	64.5	62.4
90	6743.8	7152.5	14000.7	6223.5	10559.2	5949.8	18686	8665.8	6556.2	5867.8	54.1	60.7
91	16495.6	6604.9	8596.5	10636.2	10173.9	7280.7	9620	10222.9	6801.5	5566	54.6	61.3
92	8839.3	8711.5	16606.3	5831.8	10105.8	14295.9	7002.4	5851.8	9116.6	7319	55.5	61.1
93	6784.5	16470.5	18846.9	14359	10310.3	14354.6	6236	12894.5	5755.7	8017.2	56.5	60.7
94	5719.7	6113.6	10822.6	14058.4	10699.9	9474.1	7071.5	5403.7	5238	12909.9	54.3	61.8
95	6781.7	5810.9	5949.8	9315.6	16485	6557.1	10924.3	6763.2	20420.3	6768.6	59	61.5

Stream ID	Q13	Q14	Q15a	Q16	Q17	Q18	Q19	Q20	Q21	Q22	RF1	RF2
96	8568.4	6515.2	6801.7	7199.2	9567.5	8495.6	5166.2	13776.5	7943.4	5815.3	59.3	62
97	6824.1	8545.7	8494.5	20369.9	13418	10800.7	7064	5351.5	9184.5	5295.9	58.7	63.2
98	6693.3	13881.4	5845.3	13780.6	7266.9	6770.8	6253.7	9276	14473	7021.4	61.5	62.4
99	5771.1	5115.9	6799.5	16515.9	9663.8	9028.7	6170.9	6606.5	8367.5	6905.4	59.4	62.4
100	13030.9	20531.1	6966.1	11994.4	9187.8	6563.4	6618.8	8084.9	8368.5	6480.7	58.2	62.5
101	5508.4	10182.1	14165.6	13818	9238.3	7008.2	6694.9	6181.4	7212.1	14394.1	59.1	62.2
102	11702	13011.5	16381.3	20689.3	10585.5	13628.1	7194.2	6113.6	6024	14092.7	59.4	63.5
103	7386.6	16204.3	8408.7	5634.2	13881.5	5915.4	7316.1	20917.2	14548.7	5772	59.1	62.3
104	13453.4	16287.3	6916.6	20802.2	11825	9052.1	7554.5	6290	8306	9425.1	60	63.5
105	6319.7	10237.8	16240.2	9121.7	6316.5	20916.4	6533.2	7082.5	9291.4	7123.5	57	61.9
106	8489.5	10328.3	6458.5	17402.1	7179.6	13883	7225.8	7167	13705.9	7807.8	58	62.1
107	13786.2	13918.5	6300.4	8555.5	5423.1	20920.1	7478.8	5383.8	8681.8	7224.6	58.5	62.5
108	21403.5	6932	6968.6	14281	6214.6	5975.4	7571.9	14044.8	13644.7	14492.4	57.3	62.2
109	9264.3	21436.7	8568.4	5843.4	16134.1	5226.6	13628.7	6312.2	14106.5	9369.8	59.4	62
110	8461.4	9251.4	7824.2	9223.6	5521.1	13720.7	7133	7068.6	13811	16121.5	63	62.2
111	5905	7156.7	6235.6	5814.8	8802.7	9532.9	6905.8	7613.4	6028	10868.2	64.7	60.8
112	13879	7833.8	10608.5	5916.6	16950.1	7021.8	6100.6	6947.9	5599.8	13522	63.1	63
113	5426.8	6253.9	6766.2	7515.8	5889	7252.6	9659.3	8781	13457.2	14615.6	65.9	61.5
114	13591.5	6772.6	22035.1	13977	7171.5	7561.2	6559.3	6777.7	6027.7	8534.4	63.3	62.6
115	6176.6	6959.2	22083.3	16897.8	8779.1	6868.6	6950.8	7615.5	8720.8	6319.8	58.3	61.4
116	15714.2	6931.9	7612.9	6004	7072	8595.5	6460.6	5333.5	13273.6	9341.5	58.1	62.1
117	9292.5	22207.4	6050.9	13614.6	17019.8	5294.9	6904.3	9641.3	9259	13562.1	56.5	61.8
118	13232.8	5347	6067.4	6109.9	16158.9	6929.9	14837.1	5879.9	13890.8	8672.6	56.6	62
119	23684.7	15691.7	9260.5	5385.4	6055.2	7388.6	9071.6	16782.9	5731.6	9382.8	56.5	61.3
120	5865	9219.3	6849.7	6168.3	6395.9	5885.6	5933.9	23689.1	5701.8	10585.2	58.2	63.9
121	5939.3	13822.7	9321.9	10995.2	6155.3	7498.7	5994.9	7396.1	13606.7	5865.2	60	62.4
122	23684.8	8635.6	15735.1	6282.1	14028.6	5357.4	16707.3	9477.5	10880.6	9208.7	59.9	62.4
123	9260.5	23713.3	5275.9	6609.2	13426.3	13606.4	7215.1	9352.1	7410.4	10221.1	58.9	63.2
124	5260.2	6266.5	10894.8	7921.4	8056.5	13838.1	6158.4	6271.2	24967.8	6725.6	59.6	62.8
125	5895.3	13633.4	7579.2	9388.9	15975.2	5567.3	9559.7	6913.2	17550.4	10669	60.1	62.6
126	6319.2	9349.4	5511.6	6924.1	9280.6	6842	6329.1	5979.6	6397.9	7529.1	59	62.8
127	6620.2	13885	8706.1	10550.9	14541	5775.4	9371.1	17434.4	16656.8	6967.4	60	61.7
128	10881.2	7415.4	15574.7	13282	6464.4	6868.5	13877.7	6207.5	24187.4	9366.1	59.8	60.1
Min.	297.4	17	20.8	61	150.5	764.2	220.3	74.1	801.7	74.8	51.5	59.7
Avg.	9218	10494.9	9830.6	9533	10450.5	8955.8	8020.6	8426.9	10237	9157.8	58.8	62.1
Max.	23684.8	23713.3	22426.6	22151.8	24462.6	20920.1	18686	23689.1	33456.3	21416.5	66.4	65.2