



## Dell PowerEdge R720xd using EXASolution 5.0

TPC-H Rev. 2.17.0  
TPC-Pricing Rev. 1.7.0

Report Date  
September 22, 2014

Total System Cost

Composite Query per Hour Metric

Price / Performance

**\$719,813**

**5,246,338.1**

**\$0.14**

QphH@1000GB

\$/QphH@1000GB

Database Size

Database Manager

Operating System

Other Software

Availability Date

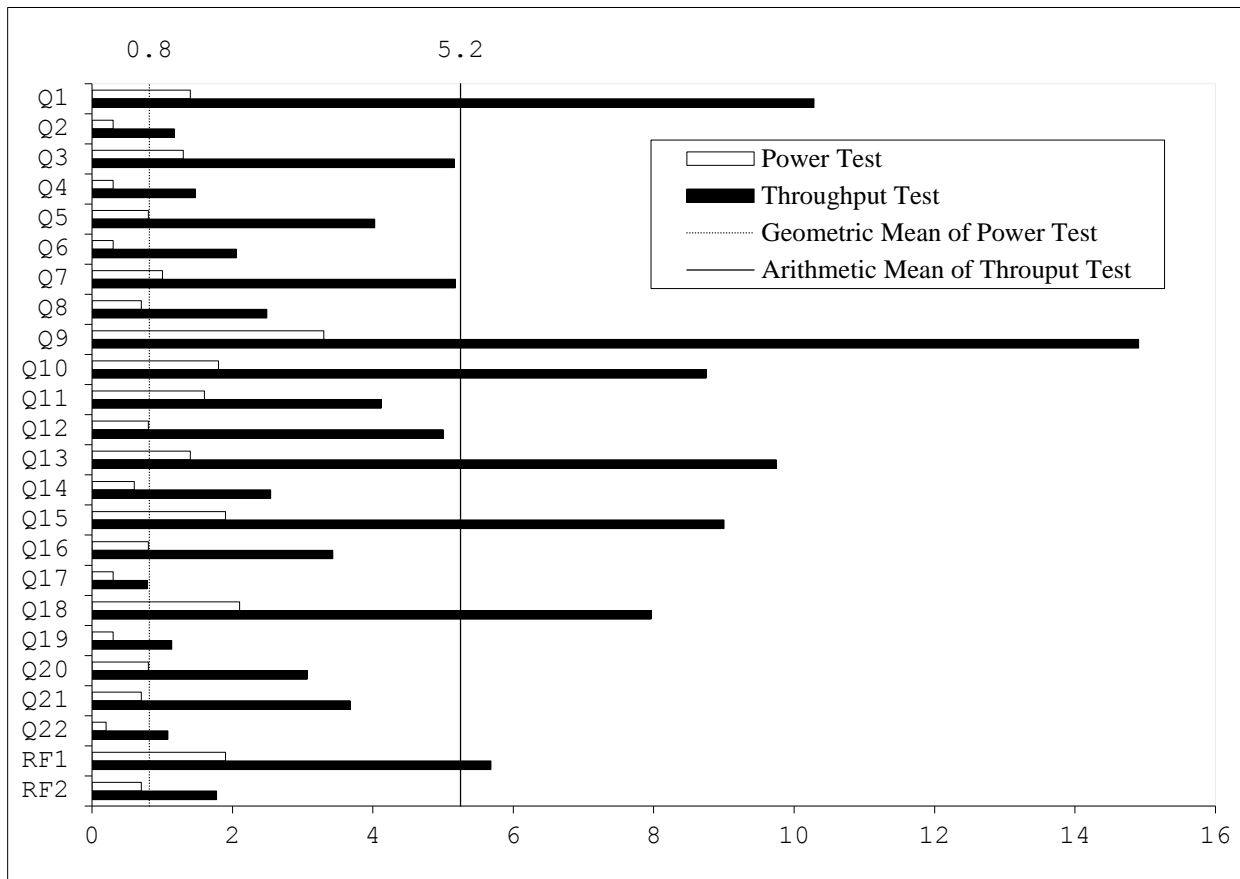
**1,000GB**

**EXASolution 5.0**

**EXAClusterOS 5.0**

**None**

**September 22, 2014**



Database Load Time = 0:15:03  
 Load Includes Backup: N  
 Total Data Storage / Database Size = 50.11  
 Memory to Database Size Percentage = 64.0%

**Storage Redundancy Levels:**

Base Tables	Level One
Auxiliary Data Structures	Level One
DBMS Temporary Space	Level One
OS and DBMS Software	Level One

**System Configuration:**

20 x Dell PowerEdge R720xd Server, each with:  
 32 GB RAM  
 2 x Intel Xeon E5-2680v2 10C 2.8 GHz processors (each 10 cores, 20 threads)  
 2 x 146 GB (15k rpm) internal SAS disks  
 2 x 1199 GB (10k rpm) internal SAS disks

**Total Storage:** 50,105 GB



## Dell PowerEdge R720xd using EXASolution 5.0

TPC-H Rev. 2.17.0  
TPC-Pricing Rev. 1.7.0

Report Date  
September 22, 2014

Description	Key	Part Number	Unit Price \$	Qty	Ext. Price \$	3 Yr. Maint.
<b>Hardware</b>						
Server Hardware	1		15,508.63	20	310,172.60	included
OEM R720XD Chassis up to 24 HDDs+2 Flex bays	1	210-ABNG		1		
Intel Xeon E5-2680v2, 2.8Hz, 10C	1	338-BCUH		2		
8GB RDIMM, 1,866MT/s, Single Rank	1	370-AAUK		4		
1.2TB SAS 6Gbit/s, 2.5", 10k, Hot Plug HDD	1	400-AAHL		2		
146GB, SAS 6Gbit/s, 2.5", 15k Hit Plug HDD (Flex Bay)	1	408-10128		2		
PERC H710p integrated RAID-Controller 1GB Cache	1	405-12071		1		
Hot-Plug redundant Power Supply (1+1) 750W	1	450-17885		1		
Intel Ethernet i350 QP 1Gbit/s Network Daughtercard	1	540-11050		1		
Intel X520 DP 10Gbit/s DA/SFP+ Serveradapter	1	540-11063		2		
iDRAC7 Enterprise including 8GB SD Card	1	528-10006		1		
Sliding Ready Rack Rails with cable management arm	1	770-11607		1		
39M ProSupport for OEM and Next Business Day On-Site Service	1	710-33226		1		
Exasol Bezel Branding	1	CFI BGMK01		1		
DELL DISCOUNT 30%	1				-93,051.78	
S4810P, 48x10GbE SFP+ Ports, 4xQSFP 40GbE Ports	1	210-38654	32,806.62	1	32,806.62	included
Dell Networking N2048, L2, 48x 1GbE + 2x10GbE SFO	1	210-ABNX	4,710.64	1	4,710.64	included
Rack TFT + Keyboard	1	A7485906	1,621.55	2	3,243.10	included
DELL DISCOUNT 30%	1				-12,228.11	
Dell Networking, Cable, SFP+ to SFP+, 10GbE, 3 meter	1	470-13555	186.48	40	7,459.20	
C2G Cat6 550MHz Snagless Patch Cable, 3 meter	1	A6928965	4.11	40	164.40	
DELL DISCOUNT 10%	1				-762.36	
APC Smart UPS RT 8000VA RM incl. Shutdown Software	1	A1176411	5,337.64	2	10,675.28	included
APC Smart UPS RT 192V 5kVA and 6kVA RM Battery Pack	1	A7773129	1,568.27	2	3,136.54	included
APC Basic Rack PDU Zero U, 120/208/230 V	1	A7067488	429.89	4	1,719.56	included
Dell NetShelter SX Deep Enclosure 42U	1	A7545497	1,486.42	2	2,972.84	included
APC IEC 320 EN 60320 C19 (W) - IEC 309 (M) - 2.4 m	1	A7155860	166.84	3	500.52	included
POWER CORD IEC 320 C19 TO IEC 320 C20 NS	1	A7294276	97.92	3	293.76	included
Reference offer Dell: 29861465	1					
<b>Hardware Subtotal</b>					<b>271,812.81</b>	
<b>Software</b>						
EXASolution 5.0 (incl. EXACluster OS 5.0)	2	501-750GB	400,000.00	1	400,000.00	48,000.00
<b>Software Subtotal</b>					<b>400,000.00</b>	<b>48,000.00</b>
<b>Total</b>					<b>\$671,812.81</b>	<b>\$48,000.00</b>

**Three-Year Cost of Ownership:**  
**QphH@1000GB: 5,246,338.1**  
**\$/QphH@1000GB: \$0.14**

Price Key: 1 DELL Emanuel Lippmann [emanuel\\_lippmann@dell.com](mailto:emanuel_lippmann@dell.com)  
Harald Kalt [harald\\_kalt@dell.com](mailto:harald_kalt@dell.com)  
2 EXASOL Aaron Auld [sales@exasol.com](mailto:sales@exasol.com)

Audited by Francois Raab of InfoSizing, Inc. ([www.sizing.com](http://www.sizing.com))

*Prices used in TPC benchmarks reflect the actual prices a customer would pay for a one-time purchase of the stated components. Individually negotiated discounts are not permitted. Special prices based on assumptions about past or future purchases are not permitted. All discounts reflect standard pricing policies for the listed components. For complete details, see the pricing sections of the TPC benchmark specifications. If you find that the stated prices are not available according to these terms please inform the TPC at [pricing@tpc.org](mailto:pricing@tpc.org). Thank you.*



# Dell PowerEdge R720xd using EXASolution 5.0

TPC-H Rev. 2.17.0  
TPC-Pricing Rev. 1.7.0

Report Date  
September 22, 2014

## Numerical Quantities

### Measurement Results

Database Scale Factor	1,000 GB
Total Data Storage / Database Size	50.11
Percentage Memory / Database Size	64.0%
Start of Database Load	2014-08-25 12:46:32
End of Database Load	2014-08-25 13:01:35
Database Load Time	0:15:03
Query Streams for Throughput Test	10
TPC-H Power	4,413,580.9
TPC-H Throughput	6,236,220.5
TPC-H Composite Query-per-Hour Metric (QpH@1000GB)	5,246,338.1
Total System Price Over 3 Years	\$719,813
TPC-H Price/ Performance Metric (\$/QpH@1000GB)	\$0.14

### Measurement Interval

Measurement Interval in Throughput Test (Ts) 127 seconds

### Duration of Stream Execution

Power Run	Seed	Query Start Time	Duration (sec)	RF1 Start Time	RF2 Start Time
		Query End Time		RF1 End Time	RF2 End Time
	825130135	2014-08-25 13:04:11	00 00:00:23	2014-08-25 13:04:09	2014-08-25 13:04:34
		2014-08-25 13:04:34	23	2014-08-25 13:04:11	2014-08-25 13:04:35

Throughput Stream	Seed	Query Start Time	Duration (sec)	RF1 Start Time	RF2 Start Time
		Query End Time		RF1 End Time	RF2 End Time
1	825130136	2014-08-25 13:04:34	00 00:01:52	2014-08-25 13:04:34	2014-08-25 13:04:44
		2014-08-25 13:06:26	112	2014-08-25 13:04:44	2014-08-25 13:04:48
2	825130137	2014-08-25 13:04:34	00 00:02:07	2014-08-25 13:04:48	2014-08-25 13:04:52
		2014-08-25 13:06:41	127	2014-08-25 13:04:52	2014-08-25 13:04:53
3	825130138	2014-08-25 13:04:34	00 00:02:05	2014-08-25 13:04:53	2014-08-25 13:04:57
		2014-08-25 13:06:39	125	2014-08-25 13:04:57	2014-08-25 13:04:59
4	825130139	2014-08-25 13:04:43	00 00:01:55	2014-08-25 13:04:59	2014-08-25 13:05:04
		2014-08-25 13:06:38	115	2014-08-25 13:05:04	2014-08-25 13:05:05
5	825130140	2014-08-25 13:04:35	00 00:01:50	2014-08-25 13:05:05	2014-08-25 13:05:11
		2014-08-25 13:06:25	110	2014-08-25 13:05:11	2014-08-25 13:05:12
6	825130141	2014-08-25 13:04:36	00 00:01:55	2014-08-25 13:05:12	2014-08-25 13:05:18
		2014-08-25 13:06:31	115	2014-08-25 13:05:18	2014-08-25 13:05:20
7	825130142	2014-08-25 13:04:41	00 00:01:56	2014-08-25 13:05:20	2014-08-25 13:05:28
		2014-08-25 13:06:37	116	2014-08-25 13:05:28	2014-08-25 13:05:30
8	825130143	2014-08-25 13:04:43	00 00:01:56	2014-08-25 13:05:30	2014-08-25 13:05:39
		2014-08-25 13:06:39	116	2014-08-25 13:05:39	2014-08-25 13:05:40
9	825130144	2014-08-25 13:04:40	00 00:01:55	2014-08-25 13:05:40	2014-08-25 13:05:44
		2014-08-25 13:06:35	115	2014-08-25 13:05:44	2014-08-25 13:05:46
10	825130145	2014-08-25 13:04:38	00 00:01:55	2014-08-25 13:05:46	2014-08-25 13:05:53
		2014-08-25 13:06:33	115	2014-08-25 13:05:53	2014-08-25 13:05:55



**Dell PowerEdge R720xd  
using EXASolution 5.0**

TPC-H Rev. 2.17.0  
TPC-Pricing Rev. 1.7.0

Report Date  
September 22, 2014

**TPC-H Timing Intervals (in seconds)**

Stream ID	Q1	Q2	Q3	Q4	Q5	Q6	Q7	Q8	Q9	Q10	Q11	Q12
0	1.4	0.3	1.3	0.3	0.8	0.3	1.0	0.7	3.3	1.8	1.6	0.8
1	10.7	1.3	3.9	1.4	4.4	2.6	5.4	2.4	15.2	8.8	4.2	6.4
2	11.7	1.1	3.2	1.5	8.0	1.1	7.6	5.5	15.9	12.4	2.1	5.9
3	12.7	1.7	1.5	1.1	3.0	1.8	6.0	1.3	20.9	11.8	7.3	2.0
4	11.0	1.1	4.4	1.9	4.8	2.7	4.6	3.1	16.3	8.7	4.1	5.9
5	11.1	1.1	8.0	1.4	4.3	2.7	5.4	2.7	14.1	8.8	4.1	6.1
6	11.0	1.4	7.1	1.8	4.2	2.1	6.1	2.5	16.4	7.0	4.3	5.7
7	10.8	1.3	6.2	1.7	4.4	3.0	5.7	2.7	16.8	9.3	5.0	2.8
8	12.0	0.9	7.5	1.6	4.1	2.5	4.7	2.3	16.2	9.0	2.9	7.2
9	10.6	1.1	6.5	2.0	3.3	2.3	5.1	2.1	14.0	10.0	5.1	5.9
10	10.1	1.6	7.1	1.5	3.0	1.5	5.3	2.1	14.9	8.6	4.6	6.3
Min	1.4	0.3	1.3	0.3	0.8	0.3	1.0	0.7	3.3	1.8	1.6	0.8
Avg	10.3	1.2	5.2	1.5	4.0	2.1	5.2	2.5	14.9	8.7	4.1	5.0
Max	12.7	1.7	8.0	2.0	8.0	3.0	7.6	5.5	20.9	12.4	7.3	7.2

Stream ID	Q13	Q14	Q15	Q16	Q17	Q18	Q19	Q20	Q21	Q22	RF1	RF2
0	1.4	0.6	1.9	0.8	0.3	2.1	0.3	0.8	0.7	0.2	1.9	0.7
1	11.6	2.8	10.3	4.8	0.8	7.3	0.9	3.4	1.6	1.2	8.7	3.8
2	12.4	2.3	12.9	3.0	0.5	13.0	1.2	2.3	0.7	1.5	4.7	1.2
3	8.1	3.8	12.3	2.2	1.0	11.1	1.2	5.0	6.8	1.7	3.8	1.9
4	10.5	2.3	9.9	3.7	0.7	9.1	0.9	1.8	5.0	0.8	5.1	1.1
5	11.1	2.6	4.3	3.4	0.8	8.3	0.9	3.7	2.7	1.2	5.2	1.8
6	9.9	3.0	9.4	4.0	0.7	8.0	1.1	3.0	4.2	0.9	5.7	2.0
7	10.0	2.5	8.4	4.5	0.9	8.1	1.1	3.2	5.0	1.0	7.9	2.4
8	10.3	2.6	10.4	5.1	0.7	4.8	1.4	3.7	4.1	1.1	8.2	1.6
9	10.1	2.5	10.2	2.4	1.2	8.4	2.1	3.1	4.5	1.0	4.1	1.2
10	11.8	3.0	9.0	3.8	1.0	7.4	1.4	3.7	5.1	1.3	7.2	1.8
Min	1.4	0.6	1.9	0.8	0.3	2.1	0.3	0.8	0.7	0.2	1.9	0.7
Avg	9.7	2.5	9.0	3.4	0.8	8.0	1.1	3.1	3.7	1.1	5.7	1.8
Max	12.4	3.8	12.9	5.1	1.2	13.0	2.1	5.0	6.8	1.7	8.7	3.8