



SPARC T5-4 Server

TPC-H Rev. 2.15.0
TPC-Pricing 1.7.0

Report Date:
June 7, 2013

Total System Cost

Composite Query per Hour Metric

Price / Performance

\$1,610,564 USD

409,721.8 QphH@3000GB

\$3.94/QphH@3000GB

Database Size

Database Manager

Operating System

Other Software

Availability Date

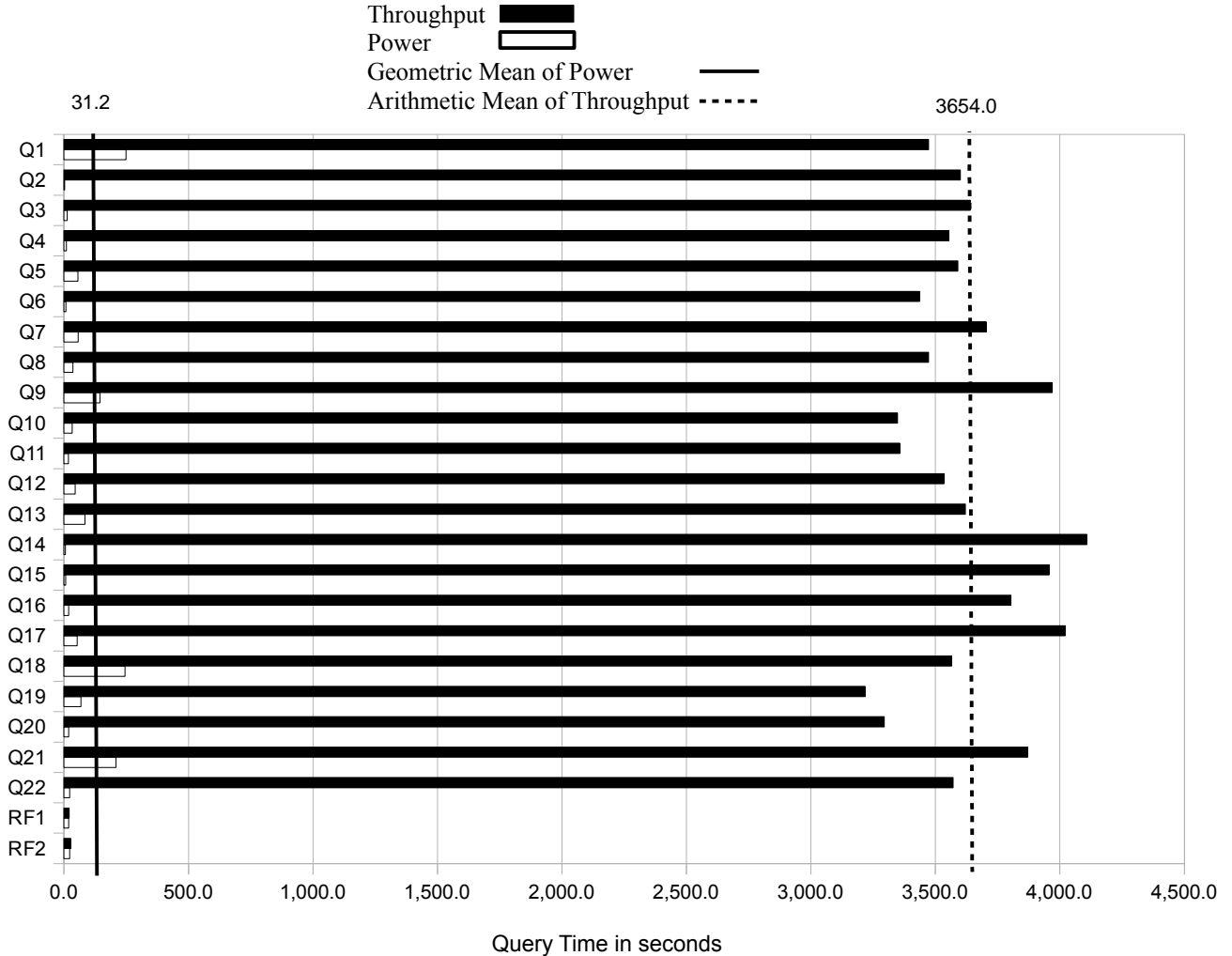
3000GB

Oracle Database 11g Release 2
Enterprise Edition with
Partitioning

Oracle Solaris 11.1

None

September 24, 2013



Database Load Time = 2:06:04
 Load Includes Backup: N
 Total Data Storage / Database Size = 29.0
 Memory to Database Size Percentage = 66.6

Storage Redundancy Levels:
 Base Tables: Level Three
 Auxiliary Data Structures: Level Three
 DBMS Temporary Space: Level Zero
 OS and DBMS Software: Level One

System Configuration:

Processors:

Memory:

Disks:

Total Storage:

SPARC T5-4 Server

4 SPARC T5 3.6GHz Processors, 64 cores, 512 threads

2TB

12 Sun Storage 2540 M2 w/ 12 300GB 3.5" 15K RPM SAS disks

12 Sun Storage 2540 M2 expansion arrays w/ 12 300GB 3.5" 15K RPM SAS disks

2 300GB 10K SAS Internal

87,000GB (GB = 1024*1024*1024 bytes)



SPARC T5-4 Server

TPC-H Rev. 2.15.0
TPC-Pricing 1.7.0

Report Date:
June 7, 2013

Description	Part Number	Source	Unit Price	Qty	Ext. Price	3 Yr. Maint.
Server Hardware						
SPARC T5-4 Server, base chassis	7104191	1	35,300	1	35,300	
2 SPARC T5 3.6GHz 16-core processors	7104194	1	33,856	2	67,712	
One 32GB DDR3-1066 registered DIMM	7104200	1	2,000	64	128,000	
300GB 2.5" 10K RPM SAS-2 HDD (factory install)	7105211	1	345	2	690	
Sun Storage 16Gb/s FC PCIe HBA, dual port, Qlogic	7101673	1	1,696	12	20,352	
Sun Storage 16Gb/s FC optics, SR, Qlogic	7101675	1	960	24	23,040	
Power Cord, 2.5M, C20 plug	SELY9P31Z	1	29	2	58	
Sun Server X3-2; base chassis	7102735	1	3,076	1	3,076	
Oracle Solaris 11.1 Pre-Install (factory install)	7100734	1	0	1	0	
US PC Peripheral Kit (Keyboard/Mouse)	X3701A-PC	1	50	1	50	
8GB DDR3-1600 DIMM (factory install)	7100730	1	152	2	304	
Sun Storage 6 Gb/s SAS HBA, Internal; 8 PORT	SG-SAS6-INT-Z	1	419	1	419	
Four 2.5" drive slots and 1 DVD-RW disk cage	7102740	1	676	1	676	
Heatsink (factory install)	7102758	1	20	1	20	
PCIe filler panel (factory install)	7102748	1	2	3	6	
Single processor I/O cover kit (factory install)	7104900	1	10	1	10	
Power Cord North America, 2.5M, 5-15P plug	333A-25-15-NEMA	1	13	2	26	
300GB 10K RPM 2.5" SAS-2 Disk	RB-SS2CF-300G10K2	1	345	1	345	
Intel® Xeon® E5-2609 4-core 2.2GHz, w/ heat-sink	7100604	1	516	1	516	
Acer S181HL Mb 18.5" LED (+ 2 spares)	2888308	2	86	3	258	
Server Hardware Subtotal					280,858	0
Storage						
StorageTek 2540 M2 array, dual FC ctrls w/ 4 8Gb/s & 2GB cache	7100183	1	12,271	12	147,252	
StorageTek 2540 M2 array; drive expansion tray	7100185	1	3,567	12	42,804	
Sun Storage 2500 M2 Performance Enhancer	7102876	1	7,500	12	90,000	
300GB 15K RPM 3.5" SAS-2 HDD w/ bracket	7100019	1	519	288	149,472	
1 AC Power Supply	7100021	1	600	48	28,800	
Power cord; Sun Rack jumper, 2M, C14 plug, C13 connector	333V-20-15-C14	1	25	48	1,200	
5M LC to LC FC cable	X9733A-Z-N	1	80	72	5,760	
Brocade 6510 Fibre Channel Swith w/ 24 16Gb/s activated	7103553	1	26,046	2	52,092	
Brocade 6510 Activation Permit for 12 8Gb/s SFPs	7103555	1	12,741	4	50,964	
Brocade 8Gb/s SFP short wave optic module	SGXSWBROSFP8GSWS-N	1	399	48	19,152	
Power cord; Sun Rack jumper, 2M, C14 plug, C13 connector	X333V-20-15-C14-N	1	25	4	100	
Rack rail kit	7103770	1	282	2	564	
Sun Rack II 42U	SR-1242E	1	2,849	2	5,698	
PDU 15kVA, Single Phase, LV	SR-15K-L630-N	1	1,200	4	4,800	
Jumper Cable Kit SunRack II – 20 C13 cables	SR-JUMPKIT-N	1	198	2	396	
Storage Subtotal					599,054	0
Server Software						
Oracle Solaris 11.1, Oracle Solaris Studio 12	7104202	1	0	1	0	
Oracle Solaris Development Tools Support	B59320	1	1,200	3		3,600
Oracle Database 11g Release 2 Enterprise Edition, Per Processor for 3 years (for 32 processors)		1	23,750	32	760,000	
Oracle Partitioning, Per Processor for 3 years (for 32 processors)		1	5,750	32	184,000	
Oracle Incident Server Support Package (for 3 years)		1	2,300	3		6,900
Server Software Subtotal					944,000	10,500
Oracle Premier Hardware Support	Q-PREM-SPRT-SYS	1	105,558	3		316,676
Totals					1,823,912	327,176
Total Oracle Software, Hardware and Maintenance Discount		1			(540,524)	
Notes (Source):					3 Yr. Cost	\$1,610,564
1. Oracle Corp. 2. CDW					QpH @3000GB	409,721.8
Audited by Francois Raab of InfoSizing, Inc.					\$/QpH @3000GB	\$3.94

Oracle's discounts are based upon US list prices and for similar quantities and configurations. A total discount of 25.1% has been applied to all Oracle hardware, software and services based on the total value and quantities of the components of the configuration, including full payment of all components and maintenance.

Prices used in TPC Benchmarks reflect the actual prices a customer would pay for a one-time purchase of the stated components. Individually negotiated discounts are not permitted. Special prices based on assumptions about past or future purchases are not permitted. All discounts reflect standard pricing policies for the listed components. For complete details, see the pricing section of the TPC benchmark specifications. If you find that stated prices are not available according to these terms, please inform the TPC at pricing@tpc.org. Thank you.



SPARC T5-4 Server

TPC-H Rev. 2.15.0
TPC-Pricing 1.7.0

Report Date:
June 7, 2013

Numerical Quantities

Measurement Results:

Database Scale Factor	= 3000GB
Total Data Storage / Database Size	= 29.0
Start of database load time	= 05/31/2013 21:41:25
End of database load time	= 05/31/2013 23:47:29
Database Load Time	= 2:06:04
Query Streams for Throughput Test	= 192
TPC-H Power	= 345.762.7
TPC-H Throughput	= 485,512.1
TPC-H Composite Query-per-Hour Rating (QphH@3000GB)	= 409,721.8
Total System Price Over 3 Years	= \$1,610,564
TPC-H Price/Performance Metric (\$/QphH@3000GB)	= \$3.94

Measurement Intervals:

Measurement Interval in Throughput Test (Ts)	= 93,961 seconds
--	------------------

Duration of Stream Execution:

Power Run	Seed	RF1 Start RF1 End	Query Start Query End	RF2 Start RF2 End	Duration
	531234729	6/2/13 2:11:39	6/2/13 2:11:58	6/2/13 2:35:25	0:24:08
		6/2/13 2:11:58	6/2/13 2:35:24	6/2/13 2:35:47	

Throughput Stream	Seed	Query Start Query End	Duration	RF1 Start RF1 End	RF2 Start RF2 End
1	531234730	6/2/13 2:35:59	21:37:51	6/3/13 2:10:02	6/3/13 2:10:21
		6/3/13 0:13:50		6/3/13 2:10:21	6/3/13 2:10:47
2	531234731	6/2/13 2:35:59	21:17:52	6/3/13 2:10:47	6/3/13 2:11:06
		6/2/13 23:53:51		6/3/13 2:11:06	6/3/13 2:11:31
3	531234732	6/2/13 2:35:59	21:36:34	6/3/13 2:11:31	6/3/13 2:11:51
		6/3/13 0:12:33		6/3/13 2:11:51	6/3/13 2:12:18
4	531234733	6/2/13 2:35:59	21:37:07	6/3/13 2:12:18	6/3/13 2:12:38
		6/3/13 0:13:06		6/3/13 2:12:38	6/3/13 2:13:03
5	531234734	6/2/13 2:35:59	21:36:38	6/3/13 2:13:04	6/3/13 2:13:23
		6/3/13 0:12:37		6/3/13 2:13:23	6/3/13 2:13:50
6	531234735	6/2/13 2:35:59	21:35:46	6/3/13 2:13:50	6/3/13 2:14:10
		6/3/13 0:11:45		6/3/13 2:14:10	6/3/13 2:14:35
7	531234736	6/2/13 2:35:59	21:42:35	6/3/13 2:14:35	6/3/13 2:14:54
		6/3/13 0:18:34		6/3/13 2:14:54	6/3/13 2:15:21
8	531234737	6/2/13 2:35:59	21:41:25	6/3/13 2:15:21	6/3/13 2:15:42
		6/3/13 0:17:24		6/3/13 2:15:42	6/3/13 2:16:08
9	531234738	6/2/13 2:35:59	21:36:31	6/3/13 2:16:08	6/3/13 2:16:30
		6/3/13 0:12:30		6/3/13 2:16:29	6/3/13 2:16:55

Throughput Stream	Seed	Query Start Query End	Duration	RF1 Start RF1 End	RF2 Start RF2 End
10	531234739	6/2/13 2:35:59	21:40:59	6/3/13 2:16:55	6/3/13 2:17:16
		6/3/13 0:16:58		6/3/13 2:17:16	6/3/13 2:17:41
11	531234740	6/2/13 2:35:59	21:38:03	6/3/13 2:17:41	6/3/13 2:18:02
		6/3/13 0:14:02		6/3/13 2:18:02	6/3/13 2:18:29
12	531234741	6/2/13 2:35:59	21:42:31	6/3/13 2:18:29	6/3/13 2:18:48
		6/3/13 0:18:30		6/3/13 2:18:48	6/3/13 2:19:15
13	531234742	6/2/13 2:35:59	21:39:48	6/3/13 2:19:15	6/3/13 2:19:37
		6/3/13 0:15:47		6/3/13 2:19:37	6/3/13 2:20:05
14	531234743	6/2/13 2:35:59	21:38:02	6/3/13 2:20:05	6/3/13 2:20:25
		6/3/13 0:14:02		6/3/13 2:20:25	6/3/13 2:20:53
15	531234744	6/2/13 2:35:59	21:39:31	6/3/13 2:20:53	6/3/13 2:21:13
		6/3/13 0:15:30		6/3/13 2:21:13	6/3/13 2:21:41
16	531234745	6/2/13 2:36:00	21:37:58	6/3/13 2:21:41	6/3/13 2:22:01
		6/3/13 0:13:58		6/3/13 2:22:01	6/3/13 2:22:29
17	531234746	6/2/13 2:36:00	21:40:55	6/3/13 2:22:29	6/3/13 2:22:50
		6/3/13 0:16:55		6/3/13 2:22:50	6/3/13 2:23:16
18	531234747	6/2/13 2:36:00	21:36:35	6/3/13 2:23:16	6/3/13 2:23:36
		6/3/13 0:12:35		6/3/13 2:23:36	6/3/13 2:24:03
19	531234748	6/2/13 2:36:00	21:37:14	6/3/13 2:24:03	6/3/13 2:24:23
		6/3/13 0:13:13		6/3/13 2:24:23	6/3/13 2:24:49
20	531234749	6/2/13 2:36:00	21:37:31	6/3/13 2:24:49	6/3/13 2:25:10
		6/3/13 0:13:30		6/3/13 2:25:10	6/3/13 2:25:39
21	531234750	6/2/13 2:36:00	21:37:41	6/3/13 2:25:39	6/3/13 2:25:59
		6/3/13 0:13:40		6/3/13 2:25:59	6/3/13 2:26:29
22	531234751	6/2/13 2:36:00	21:41:47	6/3/13 2:26:29	6/3/13 2:26:50
		6/3/13 0:17:47		6/3/13 2:26:50	6/3/13 2:27:17
23	531234752	6/2/13 2:36:00	21:48:07	6/3/13 2:27:17	6/3/13 2:27:37
		6/3/13 0:24:06		6/3/13 2:27:37	6/3/13 2:28:04
24	531234753	6/2/13 2:36:00	21:46:37	6/3/13 2:28:04	6/3/13 2:28:24
		6/3/13 0:22:37		6/3/13 2:28:24	6/3/13 2:28:51
25	531234754	6/2/13 2:36:00	21:55:15	6/3/13 2:28:51	6/3/13 2:29:11
		6/3/13 0:31:15		6/3/13 2:29:11	6/3/13 2:29:38
26	531234755	6/2/13 2:36:00	21:37:47	6/3/13 2:29:38	6/3/13 2:29:59
		6/3/13 0:13:47		6/3/13 2:29:59	6/3/13 2:30:26
27	531234756	6/2/13 2:36:00	21:48:40	6/3/13 2:30:26	6/3/13 2:30:47
		6/3/13 0:24:40		6/3/13 2:30:47	6/3/13 2:31:12
28	531234757	6/2/13 2:36:00	21:39:26	6/3/13 2:31:12	6/3/13 2:31:32
		6/3/13 0:15:26		6/3/13 2:31:32	6/3/13 2:31:59
29	531234758	6/2/13 2:36:00	21:45:09	6/3/13 2:31:59	6/3/13 2:32:19
		6/3/13 0:21:09		6/3/13 2:32:19	6/3/13 2:32:45
30	531234759	6/2/13 2:36:00	21:55:27	6/3/13 2:32:45	6/3/13 2:33:05
		6/3/13 0:31:28		6/3/13 2:33:05	6/3/13 2:33:32
31	531234760	6/2/13 2:36:00	21:42:18	6/3/13 2:33:32	6/3/13 2:33:52
		6/3/13 0:18:19		6/3/13 2:33:52	6/3/13 2:34:19
32	531234761	6/2/13 2:36:01	21:42:02	6/3/13 2:34:19	6/3/13 2:34:40
		6/3/13 0:18:02		6/3/13 2:34:40	6/3/13 2:35:08
33	531234762	6/2/13 2:36:01	21:37:53	6/3/13 2:35:08	6/3/13 2:35:28
		6/3/13 0:13:54		6/3/13 2:35:28	6/3/13 2:35:55

Throughput Stream	Seed	Query Start Query End	Duration	RF1 Start RF1 End	RF2 Start RF2 End
34	531234763	6/2/13 2:36:01	21:42:45	6/3/13 2:35:55	6/3/13 2:36:15
		6/3/13 0:18:45		6/3/13 2:36:15	6/3/13 2:36:43
35	531234764	6/2/13 2:36:01	21:38:22	6/3/13 2:36:43	6/3/13 2:37:04
		6/3/13 0:14:23		6/3/13 2:37:04	6/3/13 2:37:31
36	531234765	6/2/13 2:36:01	21:42:28	6/3/13 2:37:31	6/3/13 2:37:51
		6/3/13 0:18:29		6/3/13 2:37:51	6/3/13 2:38:20
37	531234766	6/2/13 2:36:01	21:42:37	6/3/13 2:38:20	6/3/13 2:38:40
		6/3/13 0:18:38		6/3/13 2:38:40	6/3/13 2:39:07
38	531234767	6/2/13 2:36:01	21:45:09	6/3/13 2:39:07	6/3/13 2:39:28
		6/3/13 0:21:10		6/3/13 2:39:28	6/3/13 2:39:53
39	531234768	6/2/13 2:36:01	21:43:51	6/3/13 2:39:53	6/3/13 2:40:13
		6/3/13 0:19:52		6/3/13 2:40:13	6/3/13 2:40:38
40	531234769	6/2/13 2:36:01	21:44:41	6/3/13 2:40:38	6/3/13 2:40:58
		6/3/13 0:20:42		6/3/13 2:40:58	6/3/13 2:41:22
41	531234770	6/2/13 2:36:01	21:47:17	6/3/13 2:41:22	6/3/13 2:41:42
		6/3/13 0:23:18		6/3/13 2:41:42	6/3/13 2:42:08
42	531234771	6/2/13 2:36:01	21:43:57	6/3/13 2:42:09	6/3/13 2:42:30
		6/3/13 0:19:58		6/3/13 2:42:29	6/3/13 2:42:56
43	531234772	6/2/13 2:36:01	21:44:45	6/3/13 2:42:56	6/3/13 2:43:17
		6/3/13 0:20:46		6/3/13 2:43:17	6/3/13 2:43:42
44	531234773	6/2/13 2:36:01	21:43:33	6/3/13 2:43:42	6/3/13 2:44:03
		6/3/13 0:19:34		6/3/13 2:44:03	6/3/13 2:44:30
45	531234774	6/2/13 2:36:01	21:43:29	6/3/13 2:44:30	6/3/13 2:44:50
		6/3/13 0:19:30		6/3/13 2:44:50	6/3/13 2:45:18
46	531234775	6/2/13 2:36:01	21:45:13	6/3/13 2:45:18	6/3/13 2:45:39
		6/3/13 0:21:14		6/3/13 2:45:39	6/3/13 2:46:05
47	531234776	6/2/13 2:36:01	21:55:35	6/3/13 2:46:05	6/3/13 2:46:25
		6/3/13 0:31:36		6/3/13 2:46:25	6/3/13 2:46:52
48	531234777	6/2/13 2:36:01	21:45:54	6/3/13 2:46:52	6/3/13 2:47:12
		6/3/13 0:21:55		6/3/13 2:47:12	6/3/13 2:47:40
49	531234778	6/2/13 2:36:02	21:55:03	6/3/13 2:47:40	6/3/13 2:48:01
		6/3/13 0:31:05		6/3/13 2:48:00	6/3/13 2:48:29
50	531234779	6/2/13 2:36:02	21:45:53	6/3/13 2:48:29	6/3/13 2:48:49
		6/3/13 0:21:54		6/3/13 2:48:49	6/3/13 2:49:16
51	531234780	6/2/13 2:36:02	21:48:09	6/3/13 2:49:17	6/3/13 2:49:37
		6/3/13 0:24:11		6/3/13 2:49:37	6/3/13 2:50:04
52	531234781	6/2/13 2:36:02	21:43:52	6/3/13 2:50:04	6/3/13 2:50:25
		6/3/13 0:19:54		6/3/13 2:50:25	6/3/13 2:50:52
53	531234782	6/2/13 2:36:02	21:44:21	6/3/13 2:50:52	6/3/13 2:51:13
		6/3/13 0:20:23		6/3/13 2:51:13	6/3/13 2:51:41
54	531234783	6/2/13 2:36:02	21:51:03	6/3/13 2:51:41	6/3/13 2:52:02
		6/3/13 0:27:05		6/3/13 2:52:02	6/3/13 2:52:26
55	531234784	6/2/13 2:36:02	21:44:00	6/3/13 2:52:26	6/3/13 2:52:47
		6/3/13 0:20:02		6/3/13 2:52:47	6/3/13 2:53:14
56	531234785	6/2/13 2:36:02	21:43:36	6/3/13 2:53:14	6/3/13 2:53:33
		6/3/13 0:19:38		6/3/13 2:53:33	6/3/13 2:54:02
57	531234786	6/2/13 2:36:02	22:01:45	6/3/13 2:54:02	6/3/13 2:54:23
		6/3/13 0:37:47		6/3/13 2:54:23	6/3/13 2:54:52

Throughput Stream	Seed	Query Start Query End	Duration	RF1 Start RF1 End	RF2 Start RF2 End
58	531234787	6/2/13 2:36:02	21:47:49	6/3/13 2:54:52	6/3/13 2:55:12
		6/3/13 0:23:50		6/3/13 2:55:12	6/3/13 2:55:39
59	531234788	6/2/13 2:36:02	21:44:56	6/3/13 2:55:39	6/3/13 2:55:59
		6/3/13 0:20:58		6/3/13 2:55:59	6/3/13 2:56:24
60	531234789	6/2/13 2:36:02	21:47:16	6/3/13 2:56:24	6/3/13 2:56:45
		6/3/13 0:23:18		6/3/13 2:56:45	6/3/13 2:57:12
61	531234790	6/2/13 2:36:02	21:54:24	6/3/13 2:57:12	6/3/13 2:57:32
		6/3/13 0:30:26		6/3/13 2:57:32	6/3/13 2:57:59
62	531234791	6/2/13 2:36:02	21:44:54	6/3/13 2:57:59	6/3/13 2:58:20
		6/3/13 0:20:56		6/3/13 2:58:20	6/3/13 2:58:45
63	531234792	6/2/13 2:36:02	21:44:26	6/3/13 2:58:46	6/3/13 2:59:05
		6/3/13 0:20:29		6/3/13 2:59:05	6/3/13 2:59:31
64	531234793	6/2/13 2:36:02	22:10:25	6/3/13 2:59:31	6/3/13 2:59:52
		6/3/13 0:46:27		6/3/13 2:59:52	6/3/13 3:00:18
65	531234794	6/2/13 2:36:02	21:56:26	6/3/13 3:00:18	6/3/13 3:00:38
		6/3/13 0:32:29		6/3/13 3:00:38	6/3/13 3:01:04
66	531234795	6/2/13 2:36:02	22:05:05	6/3/13 3:01:04	6/3/13 3:01:24
		6/3/13 0:41:07		6/3/13 3:01:24	6/3/13 3:01:49
67	531234796	6/2/13 2:36:03	21:52:47	6/3/13 3:01:50	6/3/13 3:02:11
		6/3/13 0:28:50		6/3/13 3:02:11	6/3/13 3:02:39
68	531234797	6/2/13 2:36:03	21:54:19	6/3/13 3:02:39	6/3/13 3:03:00
		6/3/13 0:30:22		6/3/13 3:03:00	6/3/13 3:03:25
69	531234798	6/2/13 2:36:03	21:55:35	6/3/13 3:03:25	6/3/13 3:03:46
		6/3/13 0:31:38		6/3/13 3:03:46	6/3/13 3:04:12
70	531234799	6/2/13 2:36:03	21:59:11	6/3/13 3:04:12	6/3/13 3:04:34
		6/3/13 0:35:14		6/3/13 3:04:34	6/3/13 3:05:01
71	531234800	6/2/13 2:36:03	22:11:54	6/3/13 3:05:01	6/3/13 3:05:22
		6/3/13 0:47:56		6/3/13 3:05:22	6/3/13 3:05:47
72	531234801	6/2/13 2:36:03	21:48:03	6/3/13 3:05:47	6/3/13 3:06:08
		6/3/13 0:24:06		6/3/13 3:06:08	6/3/13 3:06:35
73	531234802	6/2/13 2:36:03	21:51:30	6/3/13 3:06:35	6/3/13 3:06:56
		6/3/13 0:27:33		6/3/13 3:06:56	6/3/13 3:07:23
74	531234803	6/2/13 2:36:03	21:55:04	6/3/13 3:07:23	6/3/13 3:07:43
		6/3/13 0:31:07		6/3/13 3:07:43	6/3/13 3:08:08
75	531234804	6/2/13 2:36:03	22:05:00	6/3/13 3:08:08	6/3/13 3:08:30
		6/3/13 0:41:03		6/3/13 3:08:30	6/3/13 3:08:56
76	531234805	6/2/13 2:36:03	21:47:45	6/3/13 3:08:56	6/3/13 3:09:16
		6/3/13 0:23:48		6/3/13 3:09:16	6/3/13 3:09:44
77	531234806	6/2/13 2:36:03	21:58:37	6/3/13 3:09:44	6/3/13 3:10:04
		6/3/13 0:34:40		6/3/13 3:10:04	6/3/13 3:10:32
78	531234807	6/2/13 2:36:03	22:11:35	6/3/13 3:10:32	6/3/13 3:10:51
		6/3/13 0:47:38		6/3/13 3:10:51	6/3/13 3:11:20
79	531234808	6/2/13 2:36:03	22:04:44	6/3/13 3:11:20	6/3/13 3:11:38
		6/3/13 0:40:47		6/3/13 3:11:38	6/3/13 3:12:05
80	531234809	6/2/13 2:36:03	21:54:30	6/3/13 3:12:05	6/3/13 3:12:25
		6/3/13 0:30:33		6/3/13 3:12:25	6/3/13 3:12:51
81	531234810	6/2/13 2:36:03	21:51:18	6/3/13 3:12:51	6/3/13 3:13:11
		6/3/13 0:27:21		6/3/13 3:13:11	6/3/13 3:13:36

Throughput Stream	Seed	Query Start Query End	Duration	RF1 Start RF1 End	RF2 Start RF2 End
82	531234811	6/2/13 2:36:03	21:55:07	6/3/13 3:13:36	6/3/13 3:13:57
		6/3/13 0:31:11		6/3/13 3:13:57	6/3/13 3:14:23
83	531234812	6/2/13 2:36:03	22:10:04	6/3/13 3:14:23	6/3/13 3:14:43
		6/3/13 0:46:07		6/3/13 3:14:43	6/3/13 3:15:10
84	531234813	6/2/13 2:36:04	22:09:16	6/3/13 3:15:10	6/3/13 3:15:30
		6/3/13 0:45:19		6/3/13 3:15:30	6/3/13 3:15:56
85	531234814	6/2/13 2:36:04	21:56:27	6/3/13 3:15:56	6/3/13 3:16:17
		6/3/13 0:32:31		6/3/13 3:16:17	6/3/13 3:16:42
86	531234815	6/2/13 2:36:04	22:20:23	6/3/13 3:16:42	6/3/13 3:17:04
		6/3/13 0:56:26		6/3/13 3:17:04	6/3/13 3:17:31
87	531234816	6/2/13 2:36:04	22:02:32	6/3/13 3:17:31	6/3/13 3:17:52
		6/3/13 0:38:36		6/3/13 3:17:52	6/3/13 3:18:19
88	531234817	6/2/13 2:36:04	22:13:52	6/3/13 3:18:19	6/3/13 3:18:40
		6/3/13 0:49:56		6/3/13 3:18:40	6/3/13 3:19:06
89	531234818	6/2/13 2:36:04	22:16:55	6/3/13 3:19:06	6/3/13 3:19:27
		6/3/13 0:52:59		6/3/13 3:19:27	6/3/13 3:19:54
90	531234819	6/2/13 2:36:04	22:04:42	6/3/13 3:19:54	6/3/13 3:20:16
		6/3/13 0:40:46		6/3/13 3:20:16	6/3/13 3:20:43
91	531234820	6/2/13 2:36:04	22:03:30	6/3/13 3:20:43	6/3/13 3:21:05
		6/3/13 0:39:34		6/3/13 3:21:05	6/3/13 3:21:31
92	531234821	6/2/13 2:36:04	21:56:30	6/3/13 3:21:31	6/3/13 3:21:53
		6/3/13 0:32:35		6/3/13 3:21:52	6/3/13 3:22:21
93	531234822	6/2/13 2:36:05	22:01:41	6/3/13 3:22:21	6/3/13 3:22:43
		6/3/13 0:37:46		6/3/13 3:22:43	6/3/13 3:23:09
94	531234823	6/2/13 2:36:05	22:16:35	6/3/13 3:23:09	6/3/13 3:23:31
		6/3/13 0:52:39		6/3/13 3:23:30	6/3/13 3:23:57
95	531234824	6/2/13 2:36:05	21:58:29	6/3/13 3:23:57	6/3/13 3:24:18
		6/3/13 0:34:34		6/3/13 3:24:18	6/3/13 3:24:45
96	531234825	6/2/13 2:36:05	22:05:02	6/3/13 3:24:45	6/3/13 3:25:07
		6/3/13 0:41:07		6/3/13 3:25:07	6/3/13 3:25:32
97	531234826	6/2/13 2:36:05	22:10:01	6/3/13 3:25:32	6/3/13 3:25:54
		6/3/13 0:46:07		6/3/13 3:25:54	6/3/13 3:26:22
98	531234827	6/2/13 2:36:06	22:29:58	6/3/13 3:26:22	6/3/13 3:26:44
		6/3/13 1:06:04		6/3/13 3:26:43	6/3/13 3:27:09
99	531234828	6/2/13 2:36:06	22:19:40	6/3/13 3:27:09	6/3/13 3:27:32
		6/3/13 0:55:46		6/3/13 3:27:31	6/3/13 3:27:58
100	531234829	6/2/13 2:36:06	22:11:04	6/3/13 3:27:58	6/3/13 3:28:20
		6/3/13 0:47:10		6/3/13 3:28:20	6/3/13 3:28:47
101	531234830	6/2/13 2:36:06	22:07:09	6/3/13 3:28:47	6/3/13 3:29:07
		6/3/13 0:43:15		6/3/13 3:29:07	6/3/13 3:29:35
102	531234831	6/2/13 2:36:06	22:10:17	6/3/13 3:29:35	6/3/13 3:29:56
		6/3/13 0:46:23		6/3/13 3:29:56	6/3/13 3:30:23
103	531234832	6/2/13 2:36:07	22:32:40	6/3/13 3:30:23	6/3/13 3:30:45
		6/3/13 1:08:46		6/3/13 3:30:45	6/3/13 3:31:15
104	531234833	6/2/13 2:36:07	22:07:06	6/3/13 3:31:15	6/3/13 3:31:36
		6/3/13 0:43:13		6/3/13 3:31:36	6/3/13 3:32:02
105	531234834	6/2/13 2:36:08	22:32:39	6/3/13 3:32:02	6/3/13 3:32:23
		6/3/13 1:08:46		6/3/13 3:32:23	6/3/13 3:32:49

Throughput Stream	Seed	Query Start Query End	Duration	RF1 Start RF1 End	RF2 Start RF2 End
106	531234835	6/2/13 2:36:08	22:17:23	6/3/13 3:32:49	6/3/13 3:33:11
		6/3/13 0:53:31		6/3/13 3:33:11	6/3/13 3:33:38
107	531234836	6/2/13 2:36:09	22:28:21	6/3/13 3:33:38	6/3/13 3:34:00
		6/3/13 1:04:29		6/3/13 3:34:00	6/3/13 3:34:26
108	531234837	6/2/13 2:36:09	22:11:52	6/3/13 3:34:26	6/3/13 3:34:49
		6/3/13 0:48:01		6/3/13 3:34:49	6/3/13 3:35:14
109	531234838	6/2/13 2:36:09	22:16:30	6/3/13 3:35:14	6/3/13 3:35:35
		6/3/13 0:52:39		6/3/13 3:35:35	6/3/13 3:36:03
110	531234839	6/2/13 2:36:10	22:13:13	6/3/13 3:36:03	6/3/13 3:36:24
		6/3/13 0:49:22		6/3/13 3:36:24	6/3/13 3:36:51
111	531234840	6/2/13 2:36:10	22:31:16	6/3/13 3:36:51	6/3/13 3:37:12
		6/3/13 1:07:26		6/3/13 3:37:12	6/3/13 3:37:39
112	531234841	6/2/13 2:36:10	22:42:17	6/3/13 3:37:39	6/3/13 3:38:01
		6/3/13 1:18:27		6/3/13 3:38:01	6/3/13 3:38:27
113	531234842	6/2/13 2:36:10	22:14:16	6/3/13 3:38:27	6/3/13 3:38:48
		6/3/13 0:50:26		6/3/13 3:38:48	6/3/13 3:39:15
114	531234843	6/2/13 2:36:11	22:19:46	6/3/13 3:39:15	6/3/13 3:39:38
		6/3/13 0:55:57		6/3/13 3:39:37	6/3/13 3:40:04
115	531234844	6/2/13 2:36:11	22:10:13	6/3/13 3:40:04	6/3/13 3:40:26
		6/3/13 0:46:23		6/3/13 3:40:26	6/3/13 3:40:52
116	531234845	6/2/13 2:36:11	22:30:09	6/3/13 3:40:52	6/3/13 3:41:13
		6/3/13 1:06:20		6/3/13 3:41:13	6/3/13 3:41:40
117	531234846	6/2/13 2:36:11	22:16:52	6/3/13 3:41:40	6/3/13 3:42:01
		6/3/13 0:53:03		6/3/13 3:42:01	6/3/13 3:42:28
118	531234847	6/2/13 2:36:12	22:39:27	6/3/13 3:42:28	6/3/13 3:42:50
		6/3/13 1:15:39		6/3/13 3:42:50	6/3/13 3:43:16
119	531234848	6/2/13 2:36:12	22:21:11	6/3/13 3:43:16	6/3/13 3:43:38
		6/3/13 0:57:22		6/3/13 3:43:38	6/3/13 3:44:06
120	531234849	6/2/13 2:36:12	22:39:33	6/3/13 3:44:06	6/3/13 3:44:26
		6/3/13 1:15:45		6/3/13 3:44:26	6/3/13 3:44:53
121	531234850	6/2/13 2:36:12	22:15:49	6/3/13 3:44:53	6/3/13 3:45:16
		6/3/13 0:52:01		6/3/13 3:45:16	6/3/13 3:45:42
122	531234851	6/2/13 2:36:13	22:19:34	6/3/13 3:45:42	6/3/13 3:46:03
		6/3/13 0:55:46		6/3/13 3:46:03	6/3/13 3:46:30
123	531234852	6/2/13 2:36:13	22:15:36	6/3/13 3:46:30	6/3/13 3:46:51
		6/3/13 0:51:49		6/3/13 3:46:51	6/3/13 3:47:18
124	531234853	6/2/13 2:36:13	22:29:29	6/3/13 3:47:18	6/3/13 3:47:39
		6/3/13 1:05:42		6/3/13 3:47:39	6/3/13 3:48:05
125	531234854	6/2/13 2:36:13	22:40:37	6/3/13 3:48:05	6/3/13 3:48:27
		6/3/13 1:16:50		6/3/13 3:48:27	6/3/13 3:48:52
126	531234855	6/2/13 2:36:13	22:42:44	6/3/13 3:48:52	6/3/13 3:49:14
		6/3/13 1:18:57		6/3/13 3:49:14	6/3/13 3:49:42
127	531234856	6/2/13 2:36:13	22:23:38	6/3/13 3:49:43	6/3/13 3:50:04
		6/3/13 0:59:51		6/3/13 3:50:04	6/3/13 3:50:31
128	531234857	6/2/13 2:36:13	22:22:41	6/3/13 3:50:31	6/3/13 3:50:53
		6/3/13 0:58:54		6/3/13 3:50:53	6/3/13 3:51:19
129	531234858	6/2/13 2:36:13	22:32:34	6/3/13 3:51:19	6/3/13 3:51:41
		6/3/13 1:08:47		6/3/13 3:51:40	6/3/13 3:52:07

Throughput Stream	Seed	Query Start Query End	Duration	RF1 Start RF1 End	RF2 Start RF2 End
130	531234859	6/2/13 2:36:13	22:21:25	6/3/13 3:52:07	6/3/13 3:52:28
		6/3/13 0:57:38		6/3/13 3:52:28	6/3/13 3:52:54
131	531234860	6/2/13 2:36:13	22:28:59	6/3/13 3:52:54	6/3/13 3:53:15
		6/3/13 1:05:12		6/3/13 3:53:15	6/3/13 3:53:43
132	531234861	6/2/13 2:36:13	22:32:21	6/3/13 3:53:43	6/3/13 3:54:04
		6/3/13 1:08:34		6/3/13 3:54:04	6/3/13 3:54:29
133	531234862	6/2/13 2:36:13	22:23:38	6/3/13 3:54:29	6/3/13 3:54:50
		6/3/13 0:59:52		6/3/13 3:54:50	6/3/13 3:55:17
134	531234863	6/2/13 2:36:14	22:42:15	6/3/13 3:55:17	6/3/13 3:55:38
		6/3/13 1:18:28		6/3/13 3:55:38	6/3/13 3:56:06
135	531234864	6/2/13 2:36:14	22:50:12	6/3/13 3:56:06	6/3/13 3:56:28
		6/3/13 1:26:25		6/3/13 3:56:28	6/3/13 3:56:54
136	531234865	6/2/13 2:36:14	22:35:29	6/3/13 3:56:54	6/3/13 3:57:15
		6/3/13 1:11:43		6/3/13 3:57:15	6/3/13 3:57:41
137	531234866	6/2/13 2:36:14	22:58:30	6/3/13 3:57:41	6/3/13 3:58:03
		6/3/13 1:34:44		6/3/13 3:58:03	6/3/13 3:58:30
138	531234867	6/2/13 2:36:14	22:52:29	6/3/13 3:58:30	6/3/13 3:58:51
		6/3/13 1:28:43		6/3/13 3:58:51	6/3/13 3:59:18
139	531234868	6/2/13 2:36:14	22:48:08	6/3/13 3:59:18	6/3/13 3:59:40
		6/3/13 1:24:22		6/3/13 3:59:40	6/3/13 4:00:06
140	531234869	6/2/13 2:36:14	22:44:49	6/3/13 4:00:06	6/3/13 4:00:27
		6/3/13 1:21:04		6/3/13 4:00:27	6/3/13 4:00:54
141	531234870	6/2/13 2:36:14	22:30:30	6/3/13 4:00:54	6/3/13 4:01:14
		6/3/13 1:06:44		6/3/13 4:01:14	6/3/13 4:01:40
142	531234871	6/2/13 2:36:15	22:39:34	6/3/13 4:01:40	6/3/13 4:02:01
		6/3/13 1:15:48		6/3/13 4:02:01	6/3/13 4:02:28
143	531234872	6/2/13 2:36:15	23:06:52	6/3/13 4:02:28	6/3/13 4:02:49
		6/3/13 1:43:06		6/3/13 4:02:49	6/3/13 4:03:15
144	531234873	6/2/13 2:36:15	23:05:30	6/3/13 4:03:15	6/3/13 4:03:37
		6/3/13 1:41:45		6/3/13 4:03:37	6/3/13 4:04:03
145	531234874	6/2/13 2:36:15	23:07:38	6/3/13 4:04:03	6/3/13 4:04:24
		6/3/13 1:43:53		6/3/13 4:04:24	6/3/13 4:04:51
146	531234875	6/2/13 2:36:15	22:54:26	6/3/13 4:04:51	6/3/13 4:05:12
		6/3/13 1:30:41		6/3/13 4:05:12	6/3/13 4:05:38
147	531234876	6/2/13 2:36:15	22:49:42	6/3/13 4:05:38	6/3/13 4:05:58
		6/3/13 1:25:57		6/3/13 4:05:58	6/3/13 4:06:24
148	531234877	6/2/13 2:36:15	22:53:34	6/3/13 4:06:24	6/3/13 4:06:45
		6/3/13 1:29:49		6/3/13 4:06:45	6/3/13 4:07:12
149	531234878	6/2/13 2:36:16	22:52:22	6/3/13 4:07:12	6/3/13 4:07:31
		6/3/13 1:28:37		6/3/13 4:07:31	6/3/13 4:07:59
150	531234879	6/2/13 2:36:16	22:42:02	6/3/13 4:07:59	6/3/13 4:08:19
		6/3/13 1:18:18		6/3/13 4:08:19	6/3/13 4:08:45
151	531234880	6/2/13 2:36:16	22:51:28	6/3/13 4:08:45	6/3/13 4:09:05
		6/3/13 1:27:44		6/3/13 4:09:05	6/3/13 4:09:30
152	531234881	6/2/13 2:36:16	22:49:45	6/3/13 4:09:30	6/3/13 4:09:51
		6/3/13 1:26:00		6/3/13 4:09:51	6/3/13 4:10:16
153	531234882	6/2/13 2:36:16	23:29:16	6/3/13 4:10:16	6/3/13 4:10:36
		6/3/13 2:05:32		6/3/13 4:10:36	6/3/13 4:11:02

Throughput Stream	Seed	Query Start Query End	Duration	RF1 Start RF1 End	RF2 Start RF2 End
154	531234883	6/2/13 2:36:16	22:54:40	6/3/13 4:11:02	6/3/13 4:11:22
		6/3/13 1:30:56		6/3/13 4:11:21	6/3/13 4:11:48
155	531234884	6/2/13 2:36:16	22:48:55	6/3/13 4:11:48	6/3/13 4:12:08
		6/3/13 1:25:11		6/3/13 4:12:08	6/3/13 4:12:34
156	531234885	6/2/13 2:36:16	23:03:01	6/3/13 4:12:34	6/3/13 4:12:55
		6/3/13 1:39:17		6/3/13 4:12:55	6/3/13 4:13:22
157	531234886	6/2/13 2:36:16	22:57:20	6/3/13 4:13:22	6/3/13 4:13:43
		6/3/13 1:33:36		6/3/13 4:13:43	6/3/13 4:14:10
158	531234887	6/2/13 2:36:16	22:58:15	6/3/13 4:14:10	6/3/13 4:14:29
		6/3/13 1:34:32		6/3/13 4:14:29	6/3/13 4:14:56
159	531234888	6/2/13 2:36:16	22:48:40	6/3/13 4:14:56	6/3/13 4:15:16
		6/3/13 1:24:56		6/3/13 4:15:15	6/3/13 4:15:42
160	531234889	6/2/13 2:36:16	23:04:06	6/3/13 4:15:42	6/3/13 4:16:02
		6/3/13 1:40:22		6/3/13 4:16:02	6/3/13 4:16:27
161	531234890	6/2/13 2:36:16	23:16:30	6/3/13 4:16:27	6/3/13 4:16:47
		6/3/13 1:52:47		6/3/13 4:16:47	6/3/13 4:17:13
162	531234891	6/2/13 2:36:16	23:27:14	6/3/13 4:17:13	6/3/13 4:17:33
		6/3/13 2:03:30		6/3/13 4:17:33	6/3/13 4:17:59
163	531234892	6/2/13 2:36:17	22:57:27	6/3/13 4:17:59	6/3/13 4:18:19
		6/3/13 1:33:44		6/3/13 4:18:19	6/3/13 4:18:44
164	531234893	6/2/13 2:36:17	23:02:25	6/3/13 4:18:44	6/3/13 4:19:05
		6/3/13 1:38:42		6/3/13 4:19:05	6/3/13 4:19:30
165	531234894	6/2/13 2:36:17	23:05:24	6/3/13 4:19:30	6/3/13 4:19:51
		6/3/13 1:41:41		6/3/13 4:19:51	6/3/13 4:20:17
166	531234895	6/2/13 2:36:17	23:05:20	6/3/13 4:20:17	6/3/13 4:20:37
		6/3/13 1:41:37		6/3/13 4:20:37	6/3/13 4:21:04
167	531234896	6/2/13 2:36:17	22:53:35	6/3/13 4:21:04	6/3/13 4:21:25
		6/3/13 1:29:52		6/3/13 4:21:25	6/3/13 4:21:52
168	531234897	6/2/13 2:36:17	22:53:23	6/3/13 4:21:52	6/3/13 4:22:14
		6/3/13 1:29:40		6/3/13 4:22:14	6/3/13 4:22:42
169	531234898	6/2/13 2:36:17	23:13:25	6/3/13 4:22:42	6/3/13 4:23:04
		6/3/13 1:49:42		6/3/13 4:23:04	6/3/13 4:23:32
170	531234899	6/2/13 2:36:17	23:21:57	6/3/13 4:23:32	6/3/13 4:23:53
		6/3/13 1:58:15		6/3/13 4:23:53	6/3/13 4:24:21
171	531234900	6/2/13 2:36:17	22:57:08	6/3/13 4:24:21	6/3/13 4:24:43
		6/3/13 1:33:26		6/3/13 4:24:43	6/3/13 4:25:10
172	531234901	6/2/13 2:36:18	23:05:22	6/3/13 4:25:10	6/3/13 4:25:31
		6/3/13 1:41:40		6/3/13 4:25:31	6/3/13 4:25:57
173	531234902	6/2/13 2:36:18	23:08:36	6/3/13 4:25:57	6/3/13 4:26:18
		6/3/13 1:44:54		6/3/13 4:26:18	6/3/13 4:26:44
174	531234903	6/2/13 2:36:18	23:26:56	6/3/13 4:26:44	6/3/13 4:27:05
		6/3/13 2:03:14		6/3/13 4:27:05	6/3/13 4:27:30
175	531234904	6/2/13 2:36:18	23:24:47	6/3/13 4:27:30	6/3/13 4:27:52
		6/3/13 2:01:05		6/3/13 4:27:52	6/3/13 4:28:20
176	531234905	6/2/13 2:36:19	23:29:06	6/3/13 4:28:20	6/3/13 4:28:41
		6/3/13 2:05:25		6/3/13 4:28:41	6/3/13 4:29:08
177	531234906	6/2/13 2:36:19	23:05:21	6/3/13 4:29:08	6/3/13 4:29:30
		6/3/13 1:41:40		6/3/13 4:29:30	6/3/13 4:29:57

Throughput Stream	Seed	Query Start Query End	Duration	RF1 Start RF1 End	RF2 Start RF2 End
178	531234907	6/2/13 2:36:19	23:30:26	6/3/13 4:29:57	6/3/13 4:30:19
		6/3/13 2:06:44		6/3/13 4:30:19	6/3/13 4:30:47
179	531234908	6/2/13 2:36:19	23:28:52	6/3/13 4:30:47	6/3/13 4:31:08
		6/3/13 2:05:11		6/3/13 4:31:08	6/3/13 4:31:33
180	531234909	6/2/13 2:36:19	23:13:26	6/3/13 4:31:33	6/3/13 4:31:55
		6/3/13 1:49:45		6/3/13 4:31:55	6/3/13 4:32:21
181	531234910	6/2/13 2:36:19	23:31:26	6/3/13 4:32:21	6/3/13 4:32:43
		6/3/13 2:07:45		6/3/13 4:32:43	6/3/13 4:33:08
182	531234911	6/2/13 2:36:19	23:09:36	6/3/13 4:33:08	6/3/13 4:33:30
		6/3/13 1:45:55		6/3/13 4:33:30	6/3/13 4:33:57
183	531234912	6/2/13 2:36:20	23:24:52	6/3/13 4:33:57	6/3/13 4:34:18
		6/3/13 2:01:11		6/3/13 4:34:18	6/3/13 4:34:45
184	531234913	6/2/13 2:36:20	23:29:44	6/3/13 4:34:45	6/3/13 4:35:07
		6/3/13 2:06:04		6/3/13 4:35:07	6/3/13 4:35:33
185	531234914	6/2/13 2:36:20	23:29:57	6/3/13 4:35:33	6/3/13 4:35:54
		6/3/13 2:06:17		6/3/13 4:35:54	6/3/13 4:36:21
186	531234915	6/2/13 2:36:20	23:25:51	6/3/13 4:36:21	6/3/13 4:36:43
		6/3/13 2:02:11		6/3/13 4:36:42	6/3/13 4:37:12
187	531234916	6/2/13 2:36:20	23:32:40	6/3/13 4:37:12	6/3/13 4:37:34
		6/3/13 2:09:00		6/3/13 4:37:34	6/3/13 4:38:00
188	531234917	6/2/13 2:36:20	23:32:31	6/3/13 4:38:00	6/3/13 4:38:22
		6/3/13 2:08:51		6/3/13 4:38:22	6/3/13 4:38:48
189	531234918	6/2/13 2:36:20	23:33:41	6/3/13 4:38:49	6/3/13 4:39:11
		6/3/13 2:10:02		6/3/13 4:39:11	6/3/13 4:39:37
190	531234919	6/2/13 2:36:21	23:22:45	6/3/13 4:39:37	6/3/13 4:39:58
		6/3/13 1:59:05		6/3/13 4:39:58	6/3/13 4:40:23
191	531234920	6/2/13 2:36:21	23:28:51	6/3/13 4:40:23	6/3/13 4:40:46
		6/3/13 2:05:12		6/3/13 4:40:46	6/3/13 4:41:11
192	531234921	6/2/13 2:36:21	23:26:57	6/3/13 4:41:11	6/3/13 4:41:33
		6/3/13 2:03:18		6/3/13 4:41:33	6/3/13 4:41:59

TPC-H Timing Intervals (in seconds):

Stream ID	Q1	Q2	Q3	Q4	Q5	Q6	Q7	Q8	Q9	Q10	Q11	Q12
0	249.6	2.8	12.4	10.1	55.8	7.9	56.6	35.9	144.8	33	17.9	45.1
1	2725.6	2377.8	9292.1	2597.5	4442.5	5549.8	3237.5	1783.4	2859	2568.9	3552	3800.5
2	2013	4828.2	2703.6	2456.2	3145.2	12.1	3812.5	3098.5	4682	3204.8	2720.3	3683.3
3	5553	1763.9	2733.4	6967.5	9513.9	4457.5	3130.4	380.7	3870	2716	2778.7	2906.5
4	2560.6	2739	2870.8	2273.1	265.3	4411.9	3203.5	3576.2	3810.9	2374	4290.2	5689.6
5	2840.9	2462.7	4151.4	7030.9	1793.6	4312.6	3683.5	2507.1	2729.6	2772	3575.4	3235.4
6	2977.5	2359.2	9693.8	2274.9	2224	3577.9	4684.4	3154.3	5460.9	97.7	3486.3	4019.2
7	2955.7	3500	4215.7	3231.5	2504	2774.7	1874	8827.5	3615.6	2559.1	3255.9	2645.1
8	9861.9	2694.2	3039.6	3548.4	3505.6	2489.2	3217.3	3071.5	5699.7	2549.4	2651.4	4572.7
9	1998	6819.2	3023.3	2960.7	2914.2	5646.6	2344.9	649.6	3159.1	2996.9	3505.3	2586.7
10	3729.2	4251.5	2344.3	2767.2	2629.2	611.6	5149.7	2826.9	2524.9	3057.7	2715.6	3854.7
11	2234.3	2342.5	2346.9	3462.8	4278.6	2692	2496.1	3659.2	1792.3	3613.8	4450.6	2974.8
12	1307.3	4294	2683.8	3030.6	2434.2	4292.1	9146	2484.4	3782	2588.3	3527.3	5448.8
13	4008.1	4223	4526.9	2581	2308.5	3647.1	6692.7	2713.5	2714.4	3323.2	2969.6	5250.3

Stream ID	Q1	Q2	Q3	Q4	Q5	Q6	Q7	Q8	Q9	Q10	Q11	Q12
14	3040.4	1158.3	2564.2	4419.5	6663	2515.2	3579.4	1848.2	9198	2925.6	2390	3009.2
15	2548.2	2736.2	2817	2753.4	2569	2368.2	3785.2	4525.2	9342.3	5212.4	3283.8	4447.6
16	1805.3	3435.8	8778.8	3629.9	4649.4	6639	2782.3	1851.9	3072.7	4252	2576.5	2689.6
17	2608.6	5309.3	1238.9	2472.5	6637.2	2755.2	3001.7	4494.8	3376.6	2272.9	4475.6	2654.9
18	4274.6	3415.2	2237.1	9171.7	4518.1	4419.4	2384.2	5553.2	1752.4	2353.5	3110.2	2564.6
19	2650.5	4398	2376.1	1276.4	3396.6	1760.2	2737.1	2345	2742.2	3643.2	3108.6	9269.7
20	3518.8	2523.8	1724	3500.7	4339.7	2754.4	2413	2782.8	2592.6	2544.9	3037.7	3787.5
21	2792.4	2648.5	2746.5	5385.8	2541.2	2672	1848.1	2645.2	2872.1	3636.1	3690.8	4663.4
22	2912.6	4636.1	2586.5	4418.6	2444.9	2632.9	2332.3	1944.1	2722.2	3150.1	5410.4	2984.2
23	3362.9	3261.7	2797.8	2604.2	2610.8	4186.2	2569.1	5242.8	6909.1	1805.2	4295.7	3613.8
24	2427	2316.4	9043.4	3384.4	2369.2	4295.3	1493.1	2872.3	3692.5	6556.8	2776.4	2656.1
25	9351.8	3891.4	2590	2774.4	3394.7	2797.7	4140.6	2512.5	2760.9	3706.9	3040.7	2808.2
26	2591.6	8838.1	1777.5	3672.7	4546.2	2356.1	2364.7	2427.7	2745.2	3525	3559.6	2668.9
27	2892.3	3579.9	2460.5	4048.5	2771.3	4943.1	3003.3	4112	3773.8	2861.6	2621.5	2452.3
28	6628.1	2592.8	2547.7	2329.5	2606.5	2641.9	3021.5	2832.1	2761.9	1792.9	2574.2	4696.2
29	5809.2	1883.1	2482.1	2528.3	3991.6	3265.7	2823.5	8800.7	7081.6	1864	3433.5	3583.4
30	3642.8	2773.9	3588.1	2778.7	4220.5	2648.6	1917.3	2517.5	2976.3	3346.7	2766.9	2025.6
31	5187.8	1878.1	4172.5	3436.7	3532.4	2683.4	3315.7	2593	8722	2608.6	4425.7	2709.9
32	2525.1	2625.6	3245.3	4101.3	2981.3	4270.9	3640.5	7016	2312.3	2340.3	1865.3	8979.5
33	2539.1	7038.2	2789.7	3313.9	5121.9	2388.1	3340.8	1853.2	2581	4354.9	4198	2360.5
34	2542.8	2607.6	4023.9	3559.4	2544.5	5110.9	4207.5	2776.2	3025.2	2332.3	7022.4	2694
35	2736.3	3707.3	2692.6	2312.3	5018.8	2869.4	2336.3	3603.5	2514.4	4291.7	2514.8	4341.7
36	3024.5	2739.4	3267.3	4033.8	3569.4	4211.3	7074.6	2757.2	2315.1	2486.7	2747.8	2743.5
37	2588.3	2685.2	2593.4	2446.3	6989	4024.9	4333.8	3674.2	5325.4	3003.7	3394.6	2762.4
38	3850.5	4214.2	3101.1	6915.7	8697.3	4956.1	3352.8	2879.5	2521	2878.5	3555.6	2653.1
39	2429.4	2606.8	2344.6	3644.3	3368.6	3605	8720.3	2691	1744.4	3245.3	2719.3	2608.6
40	3944.8	2504.1	5014.6	4332.7	2762.5	2601.1	2834.1	2494.9	4303.5	2702.2	3392.8	2683.6
41	2456.9	8664.5	3364.3	2478.2	2504.6	3562.9	2939.6	3795.7	7207.7	2672.1	2457.6	2627.7
42	2814.2	2469.2	8237	2561.1	4024.6	4951.6	3487.6	1888.1	2696.8	2556.9	3581.6	3368.2
43	2356.9	3713	2454.1	2656.3	3327.7	2540.8	2623.5	3457.7	5413.2	3607.5	2900.7	4253.7
44	4941.5	1817.3	2606.4	7008.9	8453.7	3974.8	3676.2	2622.2	3604.6	3009.2	2473.9	2869.3
45	2564.6	2557.7	2767.2	2824	2543.2	3969.4	2813.2	3655.2	3153.3	2406.4	4247.6	5158
46	2448.5	2370.1	4283.5	6928.7	1858.7	4028.4	3658.2	2687.6	2521	2834	3560.4	2983.1
47	2414	2378.3	8386.2	2823.6	2456.2	3506.4	3702.1	3739.1	5319.8	2724.4	3409.8	4422.4
48	2687.9	3241.2	4158.3	3907.7	2440.1	2879	1808.5	7927	3489.7	2396.7	3407.9	2570
49	8668.2	2735.7	3226.1	3473	3463.5	2364.3	3005.2	3697.3	5549.9	2482.7	2803	3826.2
50	1865.6	6909	3607.8	2556.9	2837.8	5151.8	2420.9	3172.6	2866.7	3050.4	3343.4	2868.2
51	3985.4	3615.4	2456.2	2559.7	2569.2	3152.6	5203.7	2829.7	2432.7	3021.4	2883.7	3724.3
52	2820	2641.5	2439.1	3342.1	4165.2	2571.8	2558.1	3399.4	1848.4	3493.5	3802.1	2638
53	3860.7	4247.7	2509.5	3018.7	2476.7	3639.1	7958.9	2750.9	3357.9	2668.1	3478.8	5211.4
54	3290.5	4174.9	4270.9	2465.1	2432.5	3459.4	6583.3	2584.3	3064.9	3912.4	3233	5172.4
55	3608.8	3373.5	2615.8	4078.2	6595.9	2537.6	3425.8	1845.4	8287	2698.8	2673.9	2897.7
56	2515.6	2614.5	3125.2	2805.1	2556.9	2745	3348.3	4261.5	8331.5	5204.1	3704.4	3798.8
57	4127.5	3234.2	7896.3	3493.4	4268.9	6420.8	2813.8	1986.5	3391.2	4210.2	2477.6	2474.4
58	2452.7	5089.3	3691.5	2640.3	6465.4	2796.7	3021.9	4323.1	3935.8	2759.8	4104.8	2558.8
59	4167.9	3355.8	2876.9	8086.5	4076.6	3668	2523.7	5285.2	1828.5	2410.4	3627.4	2655.4
60	2550.4	3721.7	2424.1	3737.8	3288.9	1908.3	2496.5	2806	3075.6	3391.6	2955.5	8223.9
61	3397	2635	1924.3	3464.8	4206.8	2835.8	2738.5	2788.7	2711.9	2416.5	2729	3524

Stream ID	Q1	Q2	Q3	Q4	Q5	Q6	Q7	Q8	Q9	Q10	Q11	Q12
62	3022.1	2518.9	2842.4	5133	2509.4	2463.7	1868.5	2493.4	2942.9	3429	3463.5	4293.7
63	2803.6	4247.2	2640.3	3696.3	2468.3	2423.1	2464	1910.2	2763.8	3789.7	5154.3	3089.2
64	3735.9	4239.4	2885.8	2718.5	2298.8	3870.5	3233	5069.8	6830.1	1984.6	3343.5	3523.2
65	1771.8	2313.1	7856.5	3102.9	2532.4	3655.9	4001.2	3210.8	3506.8	6581.7	2808.1	2879.8
66	8538.3	3652.6	2678.7	2734.2	2983.3	2860	4044.8	2380.7	3017.1	4173.3	3229.8	2917.9
67	2508.8	7878	1812.3	3495.8	4255.3	2436.3	2735.6	2675.1	2997.9	3337	3249.5	2655.9
68	2424.1	3219.1	2496.5	3647.3	2728.4	4895.1	3078.8	4291.3	4328.5	2929.4	2643.9	2715.1
69	6422	3005.2	2642.9	2325.9	2543.6	2702.7	3195.5	2699.9	2785.8	4102.1	2832.3	4445.4
70	5595.3	1891.9	2447.9	2848.1	2958	4056	2810.6	7936.1	6721	4153.1	3249.1	3620.6
71	3544.2	3314.1	3337.9	2844.5	4072.2	2746.9	4232.9	2432.8	3054.7	4215.3	2727.4	2113.9
72	4976.3	4150.4	4278.1	3238.9	3321.6	2574.8	4156.7	2580.4	7868.2	2532.6	3679.3	2596.7
73	2576.6	2630.3	2985	4182.4	3220.7	4191.7	3473	6375.1	2316.3	2616.9	1789.9	8004.6
74	2758.7	6375.5	3073.4	3148.8	4808.3	2592.9	4267.1	1832.8	2773.1	4203.5	4299.2	2354.9
75	4827.4	3124	4202.9	3503.1	2470.7	5188.6	4297.8	2700	3192.7	2340.1	6136.5	2530.4
76	2731.4	3529.5	2512.8	2440.3	4960.1	2862.5	2620.3	3290.3	2467.3	3648.3	2626.8	4336.7
77	3193.7	2656.2	3087.9	4082.7	3338.6	4171.4	6320.9	2924.5	4579.7	2600.5	3009.2	2938.2
78	2768.2	2737	2495.2	2540.3	6433.2	3363.4	4223.9	3565.4	5189.4	3184.2	4222.5	2885.3
79	4712.1	4140.3	3243.5	6460.8	7687.5	5283.7	3264.1	3024.8	3140.9	2778.2	3310.7	2485.2
80	2578.2	2773.3	4550.3	3480.8	4204.8	3352.4	7775.2	2645.5	1776.5	3052.9	2750.5	2650.7
81	4070.4	2312.7	4757.3	3669.5	2745.8	2620.1	3112	2636.8	4167.7	2806.5	4187.7	2628
82	2628.4	7755.5	3516.8	2578.6	2636.9	3341	2822	3710	6419.3	2593.1	2331.5	2761
83	2817	2303.8	7471.7	3309	4225.3	5199.6	4075.3	1960.4	2719.2	2521	3529.5	3380.3
84	2444.5	3364.5	2634.3	2769	3471.1	4597.7	2532.2	3049.9	5020.5	4144	2818.2	4381.6
85	4638.2	1775.4	2760.9	6336.9	7742.1	4061.9	4318.2	4676.4	3497	3192.9	2569.4	3006.3
86	2412.1	2271.2	2644.8	3075.9	4809.1	2943.6	2706.4	3482.4	3461.3	2290.8	3712.4	5464.2
87	2464.7	2375.9	4243.9	6092.5	1828.5	4086	3510.4	2589.9	3082.2	2784.5	3448.7	2868.7
88	2481.8	2451	7654.9	3023.4	2379.9	3360.3	3354.4	4296.3	5034.4	4829.7	3016.3	4363
89	3047.2	3050.4	3812.1	4379.8	2324	2701.7	2012.8	7374.8	3483.7	2452.4	3230.4	3604.9
90	7931.3	2816.3	3072	3469.6	3356.5	2374.8	3188.7	4178.4	5443.2	2419	3144.5	3023.2
91	1878.3	6071.6	4085.2	2497.8	2813.8	5174.5	2468.4	5369.2	2795.8	3218.2	3053.5	2807.8
92	4070.1	3222.6	2375.9	2593.2	2723.4	5367	5157.6	2891.1	2468.5	3232.7	2734.8	3527.8
93	2994.5	2733.1	2420.3	3398.2	4201.9	2627.8	2974.2	3111.2	1882.9	3483.5	3203.5	2526.2
94	6053.9	3787.7	2706.8	3543.1	2392.9	2879.6	7343.2	3090.6	3508.7	2789.4	3355.8	5371
95	3276	4195.3	4289.2	2477.7	2349.8	3351.7	5668.4	2524.5	2989.2	4208.1	3238.3	5301.6
96	4068.5	5479.3	2635.6	4226.9	5613.4	3019.9	3389.3	1986.8	7737	2777.8	2769	2939
97	2471.3	2622.2	3242.3	2810.1	2472.9	3031.4	3531.4	4291.3	7730	5146.2	4206.9	3135.6
98	6243.3	3044.4	7298.2	3419.5	4454.4	5520.6	2601.7	2121.1	3698.5	3794.9	2395.4	2543.5
99	2456.2	5235	5889.3	2833.4	5559	2767.6	3434.6	3833.4	4497	3023.5	4379.1	3715.1
100	4150.7	3268.3	3050.4	7376.5	4328.9	3137.3	2715.8	5181.8	1900.3	2310.7	4173.6	2593.7
101	3142.4	2936.5	2447.6	5931.7	3140.8	1888.9	2484.9	3090.5	3065.5	3186.4	2812.4	7656.8
102	3216.7	2728.1	2054.2	3356.5	3849.6	2829.6	2987.5	3329	2382.9	2532.9	2794.2	3556.9
103	4170.5	4283.1	2637.7	5037.9	2265.2	2843.3	2161.3	2482.5	2553.9	3280.7	3408	4382.9
104	2975	4285.9	2697.1	2998.3	2456.9	2386.6	2287.8	2054.5	2846.9	4212.1	5342.7	3510.7
105	3548.3	4335.7	2633.6	2943.9	2250.3	3795.9	4291.4	5166.4	6041.7	2092.9	3039.5	3322.1
106	1878	2306.2	7221.9	3219.4	2452.4	2999.4	6194.9	3287.7	3535.9	5618.8	2801.4	2992.8
107	7860.5	2932.5	2867.6	2702.9	3147.6	2527.7	4144.6	2334.2	4214	4367.2	3592.8	2945.6
108	2384.5	7300.7	2052.8	3469.6	4192.3	2287.8	3023.4	2757.7	3396	3188.5	3187.1	2715.8
109	2283.8	3155.2	2424.9	2924	3086.7	5070.4	3477	4348.8	4720.7	2696.4	2745.3	2819.7

Stream ID	Q1	Q2	Q3	Q4	Q5	Q6	Q7	Q8	Q9	Q10	Q11	Q12
110	5613.2	3114.7	2544.1	2284.7	2388.1	2685.8	3437.7	2727.3	2838.1	6288	3391.9	4298.7
111	5421.2	2102	2304	4210.4	2589.3	4462.7	2630.6	7369.6	5909.6	6307.7	3285.8	3413.9
112	3920.2	4731.4	3140.9	2684.3	4147.3	3004.1	6409.2	2541	3314.3	4391.9	2484.4	2136.6
113	5119.9	6311.1	4144.6	3116.6	3213	2643.4	4509.8	2512.5	7658.3	2424.3	2949.7	2874.7
114	2424.9	3718.6	3144.9	4146.4	3480.4	3815.7	3493.2	5534.2	2280	2748.9	2066.9	7561
115	3229.9	5637.4	3344.3	3154.2	5132.6	2700.9	4466.3	2029.5	2521	3891.7	4183.7	2303.8
116	6964.1	4169.1	4151.1	3349.7	2256.8	5021.9	3819.9	2824.1	3660	2320	5204.6	2409.2
117	3078.8	3496.2	2457.1	2324	4962	2648.3	2882.8	3257	2377.4	2943.6	3556.5	3955.3
118	4218.4	2836	3166.4	4057.7	3379.5	3337	5468.1	2661.8	6847.9	3029.3	3087.7	2729.2
119	2843.8	2744.7	2445.1	2396.7	5440.9	2927.5	3795.9	3559.8	5052.6	3549.8	4387.8	2853.4
120	4982.6	3583.3	3656	5415.9	7436.7	5176.3	2977.3	3010.7	4697.4	2550.9	3256.5	2305.6
121	2392.8	3494.8	6722.8	3485.2	4334.8	3226	7398.5	2466	2048.8	3144.9	2766.5	2643.3
122	4052.7	2276.6	4790.9	2997.4	2654.8	2792.1	2994.2	2407.3	3791.9	2682.4	4501	2975
123	2384.3	7314	3489.4	2394	2661.1	3201.2	2845.7	3011.5	5416.9	2744.9	2293.6	3542.6
124	2576.6	2323	7355	4182.7	4085	4769.6	4502	2110.7	2614.8	2264.3	3366.5	3296.9
125	2439.9	2636.4	2819.8	2945.3	3369.1	6870	2302.1	3317.2	5146.2	4446.8	2672.5	3918.4
126	4769.5	2069.4	4564.3	5392.1	7308.6	4037.7	4587	6946.3	3637.2	3600.5	2315.8	2938.2
127	2415.9	2309	2627.2	2982.8	6949.7	2532.1	2706.4	3045.2	3776.5	2212.7	3582.5	5228.6
128	2400.5	2283.5	3792.1	5393.3	2049.3	4035.8	3313.1	2468.6	3899.1	2683.6	3378.8	2729
129	2262.5	2448.7	7329.7	3083.8	2320	3334.6	3050.8	4485.9	4825.9	6957.6	3251.5	3810.2
130	3090.8	3422.9	3807	4461.9	2319.8	2798.5	2092.9	7377.9	3324.4	2412.1	3273.9	3815.3
131	7873.7	2621.1	3612	3029	3322.4	2257.6	3777	4511.8	5281.3	2393	4156.5	2622.3
132	2066.4	5318.7	4538.5	2281.4	2633.9	5020.4	2432.3	7059.1	2580.9	3562.7	3297	3123.2
133	4434.4	2721.4	2323.8	2822.4	3837.8	7079	5047.7	2620.5	2252.6	3564	2628.7	3482.4
134	3094.3	3015.4	2124.6	3178.7	3390.9	2827.3	4667	3755.3	2145.1	3424.4	2545.2	2356.2
135	7824.4	3377.6	2876.1	3760.6	2239.1	2510.5	7345.1	3216.1	3547.2	3053.3	3192.3	4977.7
136	3278.5	3371.8	4132.3	2242.7	2208	3181.4	4754.4	2540.9	3149.3	4628.2	3770.2	5270.8
137	5177.3	7207	2906.7	4143.5	4836.1	5258.3	3220.5	2180.1	7735.7	2573.5	2931.5	2899.5
138	2516.1	2758.4	3699.9	2826.4	2304.5	3152.1	3193	4129.6	7805.9	5075.6	4726.8	2694.4
139	7969	3268.9	7192.6	2938.7	3802.8	5014.6	2681.5	2146.2	3663.9	3576.4	2382.4	2615.9
140	2535.9	4879.4	7700.5	2941.1	4826.5	2662.5	3759.8	3423.6	4957.5	2994.8	4057.4	4940.2
141	3655.7	3340.5	2991.8	7348.8	4257.9	2545.7	2823.2	5176.2	2092.9	2170.8	4624.5	2541.7
142	4615	2496.4	2237	7738.3	3156.8	2124	2296.5	3167.2	3798.8	3628.4	2635.1	7601.6
143	3898.8	2823.3	2101.4	3320.2	3593.9	2723	2981.4	5750	2770.9	2100.1	2585.7	3333.1
144	4270.1	5672.1	2729.8	4805.8	2183.9	2810.4	2289.1	2438.1	2525.2	3544.8	3283.2	3936.8
145	3508.7	3827.3	3025.7	2577.7	2169.3	2426.9	2055.9	2286.2	2697.7	4727.8	5080.2	3651.4
146	3707.2	4908.7	2746	2928.1	2150.2	3376.3	5164.9	4902.7	5150.6	2145.1	2470	3499.1
147	2154.2	2211.1	7196.6	3732.3	2479.9	2567.4	7967.9	3746.8	3321.7	5103.1	2863.1	3021.5
148	7300.7	2525.7	3044.2	2583.3	3630.7	2821.6	4056.6	2248.9	5205.8	4986.5	3800.3	2758.8
149	2535.9	7198.5	2141.3	2941.1	3740.4	2128.1	3094.8	3077	3976.8	3704.7	3183.4	2758.8
150	2208	3195.5	2300.5	2520	3146.4	4815.8	3701.1	3772.4	5135.8	2604.7	2963.2	2931.9
151	5080	3147.6	2320.3	2188.1	2461.5	2449	3749.1	2892	2941.8	8057.3	4991.5	3889.9
152	4862.4	2133.1	2219.8	4888.5	2483.9	4822.6	2779.8	7202.9	5326.3	8067.6	3512.8	3345.5
153	4062	6742.6	3308.6	2712.6	3785.4	2953.4	8167.8	2422.9	3531.6	4847.7	2537.5	2696.8
154	4878.2	8080.7	3746.1	3123.4	3579.3	2902.5	4931.7	2261.8	7482.7	2451.7	2530.3	3161.2
155	2180.6	4882.6	3496.8	3668	3669.8	3516.6	3298.9	5012.5	2160	3053.4	2156.3	7360.8
156	5648.1	4994.4	3743.9	3589.3	4878.2	3045.5	4931.6	2202.2	2300.5	3364.3	3735.7	2334.2
157	8731.6	5197.8	3637	3338.7	2324.3	4806.2	3384.5	2854.9	3663.6	2124.4	5021.3	2497.8

Stream ID	Q1	Q2	Q3	Q4	Q5	Q6	Q7	Q8	Q9	Q10	Q11	Q12
158	3146.4	3142.6	2507.7	2066	4820.4	2687.2	2929.9	3181.7	2462.3	2524	5251.2	3645.1
159	3619.2	2756.7	3552.3	3584.4	3313.6	3512.8	5056.3	2587.4	8537.9	3053.3	3227.2	2819.7
160	3025.7	2853.7	2453.7	2107.5	4952.7	2441.3	3617.7	3352	5117.7	3612.7	4933.3	2583.5
161	5520.9	3506.6	3531.6	4979.5	7078.8	4694.4	3446.4	3258	6254	2539.9	3233.5	2481.2
162	2185.3	6674.8	8486.7	3181	4890.5	3250.5	7170.4	2529	2423.6	3496.8	2547.6	3005.3
163	3649.5	2109.6	4858	2501.2	2708.8	2983.2	3203.9	2191.3	3713.5	2591.1	4861.9	3068.3
164	2507.7	7076.1	3388.4	2223.9	2851.1	3213.3	2733.8	2472.9	5341.2	2929.9	2076.5	5497.1
165	2699	2078.5	7000.3	5664.2	3588.7	4808.1	4984	2199.9	2553.9	2220.2	3373.4	3505.6
166	2419.9	2330.2	2881.7	3057.7	3283	8554.8	2181	3510.9	5112.6	4848.2	2739.5	3561.5
167	4855.9	2080.6	5001.2	4956.5	7022.3	3662.5	4949.9	8637	3285.3	3671.4	2241.7	2743
168	2503.7	2200	2749.1	3158.1	8754.8	2367.6	2594.9	3368.3	3448.6	2097.6	3568	4649.2
169	2200.2	2105.8	3520.8	4953.2	2143.5	3624.1	3362.4	2571.8	6137.6	2627.9	3353.9	2660.4
170	2097.3	2449.3	6975.7	3091.4	2132	3308.3	2555	4948.7	4813.4	8738.3	3550.3	3615.9
171	3095.3	3322.3	3347.5	4837.9	2075.9	2556.8	2201.3	7051.7	3609.6	2419.9	3549.6	5209.2
172	7557.8	2551.7	3847.7	3240.5	3189	2042.7	3317.2	5295.1	4894	2328.8	5667.6	2327.7
173	2110.7	4850.4	5307.4	2224.2	2629.7	4657.5	2507.7	8857	2789.8	3530.2	3458.3	3102.6
174	5481.9	2240.7	1810.8	2793.8	6699.7	8875.6	4574	2851.5	2513.5	3847.7	2473.6	3398.6
175	3178.8	3039.5	2085.8	3279.5	3466.6	2802.6	6585.9	3514.4	2584.3	3265.7	2466.2	2320.6
176	9608.1	2743.6	2764.1	4294	2369.5	2272.8	7034.7	3607.1	3884.2	3009.1	2745.5	4865.1
177	3176.1	3314.5	3642.2	2183.6	2067.9	3428	4414.7	2505	3571.6	5099.8	3742.6	4922.9
178	5582.3	8977.9	2942	3553.3	4536.8	6658.2	3309.1	2612.1	7405.6	2368.3	3145.1	2927.1
179	2331.6	2802.8	3847.7	2776.3	2172.2	3456	3241.1	3644.9	7517.5	4649.7	5316	2539
180	9738.8	3109.5	7019.1	3428.2	3621.8	4299.5	2649.7	2328.5	3878.2	3183.7	2198.3	2373.2
181	2260	4545.9	9477.6	3085.4	4376	2730.3	3825.2	3227.6	5646.8	3587.3	3678.3	6908.5
182	3556.4	3360.7	3201.6	7022	3644.8	2310.2	2794.8	4685.3	2461.6	2050.3	5227	2518.2
183	6657.2	2312	1884.6	9518.1	3096.6	2361.3	2423.2	3481.2	4110.4	3139.2	2596.2	7285.3
184	3735.7	2721.5	2554	3192.4	2703.5	2751.2	3583.7	6774.9	2583	2396.3	2563.6	3033
185	4654.4	6740.6	2660.8	4548.6	2348.4	2734.2	2600.6	2354.9	2695.7	3300.3	3265.5	3886.7
186	3804.3	3651.5	3085.4	2304.1	2339.3	2262.6	1792.2	2594.3	2790.5	5283.9	4658.7	4145
187	4763.7	5626.3	2585.5	2659.8	1884.6	2525.7	6790.1	4486.1	4678.4	2608.6	2260.8	3212.1
188	3024.2	1801.8	7060.7	3345.4	2588	2312.9	9742.1	4204.6	3686.4	4262.6	2568.6	2752.9
189	7535.9	2282.4	2897.5	2668	3615.3	2597.9	3532.5	1832.7	6972.3	5259.6	4517.2	2810.2
190	2304	6993.9	2521	3309.1	3618.9	1796	3602.9	3109.5	4114.3	3187.3	3118.7	2806.4
191	1808.2	3099	2452.1	2299.4	3547.6	4424.6	4150.5	3684.2	5763.7	2540	3120.9	2868.3
192	4448.8	3536	2460.1	1792.2	2240	2387.9	4219.1	2917.1	2722.9	9751.3	6701.5	3698.7
Min.	249.6	2.8	12.4	10.1	55.8	7.9	56.6	35.9	144.8	33	17.9	45.1
Avg.	3742.5	3600.8	3639.8	3554.1	3590.1	3436.2	3703.8	3472.8	3969.6	3347.5	3357.5	3535.4
Max.	9861.9	8977.9	9693.8	9518.1	9513.9	8875.6	9742.1	8857	9342.3	9751.3	7022.4	9269.7

Stream ID	Q13	Q14	Q15	Q16	Q17	Q18	Q19	Q20	Q21	Q22	RF1	RF2
0	84.3	6.1	7.1	18.5	53.1	245	68.6	19.3	208.8	23.3	19.4	22.4
1	4351	2599.9	2799.6	3686.2	2354.7	7034	2515.4	4466.5	524.2	2752.7	19.6	25.5
2	2262.9	7527.1	2999.8	5432.4	6463.8	2320	4209.6	2880.4	2753	3463.4	19	25.4
3	3006.2	3575.5	4279.3	2400.1	3632.9	4414.4	2415.2	2395.9	2599.7	2303.1	19.8	26.5
4	2260.2	7074.6	3457.4	2849.8	3193.9	1764.4	4449.4	2762.7	9499.8	2449.6	19.9	25.9
5	2977.9	2276.9	9240.6	3099.1	2530.4	4411.6	5689.5	2356.3	574.5	3546.1	19.4	26.9
6	4312.6	2322.9	7050.6	2091	2965	3201.5	3222.9	2523.1	2686.9	3359.2	19.9	25.1
7	2428.9	2571.8	2766.5	2635.9	4346.7	1152.2	3209.3	6932.2	4888.8	5263.9	19.4	26.4

Stream ID	Q13	Q14	Q15	Q16	Q17	Q18	Q19	Q20	Q21	Q22	RF1	RF2
8	2616.3	2799.9	6591	2475.7	4587.2	2702.5	591.1	4308.7	2683.4	1828	21.3	25.9
9	9417.5	2384.2	4036	2774.7	3567.5	2277.1	3544.8	4502.9	4407.4	2274.1	21.3	25.3
10	3169.2	4214.8	9225.3	1834	4552.3	7017	2482.6	2695.7	3620.4	2785	20.8	25.3
11	2859.5	9221.7	633.7	5599.2	4555.9	7002.5	2900.2	3043.6	2692.6	3030.1	20.7	27
12	2632.6	2766.3	2641.3	6633.3	4684.7	3520.3	2774.3	2496.9	1743.7	3238.7	19.3	27.4
13	2807.9	1848.1	2782.3	3278.2	9020.4	2759.8	2650.6	2377.7	1176.8	4327.2	21.3	28.3
14	4279.3	2760.9	4439.9	2287.9	3726.7	3592.5	2492.1	5599.6	2805.3	2587.2	20.1	27.9
15	2404.3	3442.3	4347.1	1205.8	6787.9	2573.7	3151	1772.8	3521.2	2376.1	19.5	28.2
16	2763.6	5151.9	2324.9	3343.1	2360.9	2713.2	2496.8	3567.9	2537.5	4455	20.3	28.1
17	1900.4	2333.8	4405.1	9164.3	3531.7	3669.3	2708.8	2809	3519.1	2715.7	20.6	25.8
18	6593.9	1255.9	3169.2	2736.7	3706.7	2260.2	2831.7	3026	3499.4	2961.5	20.3	26.3
19	2556.8	4592.3	3144.5	5446.6	3683.8	2260.2	3056.8	2481.9	4291.3	6615.9	20.6	26.1
20	4496.8	6572.3	9152.9	1320.2	2818.1	5507.9	4561.2	2408.5	2404.3	3088.4	20.8	28.7
21	2352	9141.5	3429.9	4402.7	3146.4	2360.5	4596.2	1354.4	6549.6	2385.2	19.7	30.7
22	6556	9166.2	2632.2	1367.2	2698.3	3644.6	4396.7	2771.8	3417.2	3281.8	20.7	26.7
23	2572.7	4451.1	9160	3701.1	2581.6	1355.8	2541.1	2897.9	3440.2	2525.9	20.1	26.8
24	3394.3	4659	2578.7	2557.3	2563.3	5229.2	2995.5	2581.2	3619.4	4336.2	19.9	27.1
25	6725.9	5080.6	2431.2	3542.2	1975	2040.3	2966.6	2629	3460.4	4293.7	19.9	27.3
26	1709	4408.9	3021.7	2656.6	2753	2572.9	4483.4	5189.9	3333.5	6664.8	20.5	27.3
27	3173.3	1729.6	4303.5	2512.5	8935.5	1808.9	2680.2	2880.2	7293.5	3682.6	20.5	25.6
28	3505.4	3371.3	4243.1	3712.8	1922.4	3320.4	2516.5	4384.9	5159.8	8804.2	19.8	27
29	2424.1	2698.2	2454.2	4240.6	3446.9	4159.7	2766.9	2840.6	2672.1	3059.1	20.1	25.3
30	5052.1	3483.6	3147.3	2322.3	8839.7	4291.7	2741.2	2666.5	4141.6	7038.6	20	27.1
31	1904.6	2702.5	2696.8	2406.7	2456.2	4343.2	2845.3	3684.9	7129.9	2702.4	19.9	27.2
32	3223.3	2857.9	1902	5276.8	4341.1	2693.8	2898.6	2804.5	2675.6	3545	21.5	27.9
33	2587.7	4295.5	1920.8	8785.8	3593.3	2925.5	2757	2647.7	3696.3	2784.3	20.2	26.5
34	8525.6	4236.1	2788.4	2508.2	2751.8	3604.3	2829.5	1882.9	3369.2	3221.6	20.4	27.2
35	3221.3	1939.6	2758.3	3383	8865	1836.3	2836.5	4134.2	2926.5	7062.5	21.1	27.5
36	3380.7	1871.6	2626.4	2569.6	8617.5	4279.7	2748.3	2368.1	5055.5	3659.9	20.2	28
37	2270.5	8537.4	3173.3	1846.4	2449.6	2792.2	3675.4	2657.1	2760.7	4173.2	20.8	26.8
38	2638	4079.9	2479.9	4083.6	2469.3	2830	2014.6	2321.8	2429.2	3387.8	20.5	25.2
39	2500	6965.9	3986.9	3024.1	2712.5	2706	4404.6	4318	5059.3	2826.2	20.3	24.5
40	2529.4	3608.7	8502.7	2643.8	7044.7	1770.3	2777.7	3200.7	3007	3625.4	20.7	23.6
41	3429	2367.2	1854.9	4240.9	3911.1	5089	2869.6	4116.8	2688.3	3138.5	20.4	26
42	4162.8	2443.6	3134.7	3436.8	2860.6	6948.2	2730.2	4303.6	2907.6	2671.7	21	26.7
43	2423.2	6957.7	2741.7	4179	8608.1	1908.3	3610.1	2911.9	2510.7	3129.5	20.7	25.4
44	2690.4	3152.4	4303.5	2695.8	3701.4	4063.6	2660.3	2423.9	2630.7	2832.9	21.1	26.3
45	2600.5	7012	3497.6	3071.3	3616.9	1828.5	4120.5	2645.5	8528.6	2628	20.5	27.4
46	3033	2815.6	8043.8	3707.3	2622.2	3895.7	5080.2	2619	3120.4	3213.7	21.7	26
47	4166.9	2658.6	6977.9	1940.5	2868.5	3088.7	3004.5	2575	2979.8	3392.3	19.5	26.8
48	2576.6	2479.9	2826.2	2695.6	3783.3	3358.9	3178.6	6875.6	4528.8	5136.3	20.6	27.9
49	2660.9	2991.3	6464.6	2574	4178	2858	3131.9	4220.7	2626.3	1902.4	20.1	28.2
50	8035	2456.1	4163.4	2557.2	3590	2844.1	3525	4192.6	3823.6	2514.9	20.5	27.2
51	3333.7	4295.5	8034.4	1899.6	4140.9	6909.6	2777.7	2443.7	3476.4	2743.6	20.8	26.9
52	2765	8033.7	3169.9	5193.4	4207.8	6896.9	2933.4	3724.9	2440.7	3147.5	20.7	27.5
53	2456.9	2838.2	2557.6	6515.8	4349.7	3241	2860.7	2460.5	1848	3953.9	20.9	27.7
54	2804.9	1816.1	2797.8	3114.3	8120.8	2572.1	2751.6	2634.6	3656.6	3750.9	20.6	24.4
55	4283.5	2448.5	3837.4	2845.9	3305.8	3562.9	2605.2	5134.1	3033.2	2545	20.7	26.7

Stream ID	Q13	Q14	Q15	Q16	Q17	Q18	Q19	Q20	Q21	Q22	RF1	RF2
56	2600.5	3368.8	4167.5	3436.7	6515.3	2609.1	2828.7	1818.6	3393.2	2466.8	19.9	28.7
57	2623.7	5065.7	2363.2	3997.1	2835.2	2807.8	2791.8	3264	2972.9	3788.7	21.2	28.4
58	1808.5	2440.7	3711.5	8111.3	3487.7	3433	2596.8	2593.7	3528.6	2916.4	20.4	26.4
59	6462.4	3711.3	2838.5	2561	3384.2	2657.8	2550.5	3129.3	3564.6	2873.8	20.7	24.8
60	2356.9	4216.1	3828.1	5165.9	3554.5	2656.3	2954.6	2465.2	4203.5	6455.1	20.2	27.4
61	4168.6	6458.1	8030.4	3787.5	3166.8	5223	3813.5	2504.5	2658	3681.5	20.5	26.5
62	2679.4	7979.6	3347.9	4219	3815.3	2431.9	3864.6	3838.1	6454.3	2683.3	20.9	25.6
63	6504.5	7955.9	2766.2	3875.7	2707.7	3356.8	4260.1	2622.3	3334.3	3432.7	19.3	25.7
64	2715.2	4130.8	7966.6	3519.1	2586.2	3862.7	2539.3	2750.8	2987.7	3033.4	21.4	25.5
65	3240.9	4245.4	2589.4	2800.7	2627.9	4804.6	2811.6	2971.3	4424.2	4249.4	20.2	25.9
66	6335.5	4814.6	2536.7	3383.9	1949.3	3878.6	3174.4	2517.8	3473	4230.4	20.7	25
67	4112.5	3621.3	2839.9	2699.9	2874.5	2469.3	4455	5034.5	4143.8	6479.2	21.6	28.3
68	3325	4023.1	4203.5	2402	7954.6	1904.5	2890.7	2780.7	6442.2	3535.2	20.3	25.5
69	3340.5	3038.2	4167.7	3526.6	1865.3	4188.5	2728.7	3700.7	4760.2	7915.8	20.7	25.9
70	2427.7	2734.2	2453.2	4144.2	3355.9	4082.9	2707.2	3028.7	2748.9	3180.8	21.7	27.2
71	4808	3471.5	3068.2	2324.1	8085.2	3651.9	2645.6	2716	4103.8	6402.6	20.9	24.5
72	1812.5	2778.9	2886.3	2755.8	2448.5	4155.2	3152.9	3517.4	6425	2597	21	27.5
73	4112.3	2806.1	4179.5	5057.6	3799.2	3019.1	2889.3	2626.1	2571	3267.9	20.9	26.7
74	2557.2	3655.5	4178.2	7901.5	3323.8	2770.4	2777.4	2900.1	3528.6	2822.6	20.5	25
75	7864.6	3187.5	3019.6	2686.7	2810.1	3451.4	2993.7	1862.7	4071.6	3038.5	21.7	26.2
76	3321	4204.6	2754.5	4130.6	7993.2	1812.3	2575.4	4144.6	3072.5	6430.2	20.1	27.7
77	4176.7	1773	2528.6	2528.6	7859.2	3655.9	2952.5	2411.7	4796.2	3531.4	20.1	27.7
78	4449.3	7749.1	2985.2	1922.6	2444.8	3034.2	3354.8	3299.6	2889.8	4157.4	19.4	28.1
79	2700.1	4132.9	2607.9	3022.3	2455.2	2821.6	2079.1	4511.1	2379.9	3242.1	18.9	26.1
80	2312.3	6418.5	4048.4	3203.1	2648.9	3021.8	4268.2	3685.5	4804.2	2867.7	20.4	26.4
81	4554.1	3482.3	7764.5	2589	6455.4	1775.8	2759.5	3005.5	3196.9	3380.4	19.4	25.5
82	3037.1	4572.8	1777.5	4217.1	4270.3	4722.6	2913.2	4096.3	2993.3	3213.4	20.7	25.7
83	3887.9	2372.5	3346.2	3442.9	3079.2	6240.4	2880.4	3218.3	5067.3	2756.6	20.5	26.4
84	2311.8	6337.5	3035.6	4115.5	7844.1	1900.3	3506.7	2802.9	3421.7	3252.1	20.6	25.2
85	2775	2985.6	4175.5	2675.8	3408	3707.9	2716.2	2374.9	2530.3	3062.8	21.1	25.6
86	2857.6	5947.1	3370.9	3573.3	4334.2	2092.9	4342.9	3747.2	8073.9	2808.5	22	26.4
87	3205.5	3023.4	7365.7	4189.1	2645.2	3189.6	5196.4	2725.5	5351.7	3084.5	21.2	27
88	4098.8	2746.1	6304.3	1952.9	2915	3193.5	2861.2	2659.8	3541.5	3513	21	25.6
89	2380.3	2643.4	2841.8	2817.9	2998.5	5466.8	3632.6	6005.3	4656.3	5298.3	21.2	27.1
90	2769.2	3031.8	5620.3	2484.1	4339.3	2817.6	5292.9	4153.8	2617.9	1938.1	21.9	26.9
91	7372.7	2615.7	4151.8	3075.8	3568	3019.4	3594.9	4132.1	3207.9	2437.3	21.8	26.6
92	3011	4243.9	7373.7	1841.7	4188.2	6069.9	2820.8	2558.1	3449	3069.6	21	28
93	2718.2	7358.2	5387.1	5226	4230.1	6068.8	2952	4108.6	2468.4	3226.9	22.2	26.6
94	2420.4	2769.5	3528.9	5640.2	4367	3139.6	2831.3	2329	2011.8	4334.2	21.1	26.1
95	2689.3	1936.3	2782.2	3158.1	7450.9	2659.6	2956.3	2726.1	5855.4	3025.3	21.5	27.2
96	4211.9	2456.7	3181	3059.3	3123.7	3474.7	2539.7	5216.6	3212.5	2383.4	21.6	24.5
97	2729.1	3292.4	4151.8	5527.8	5697.8	3504.3	2840	1929.3	3028.8	2408.2	22.3	28.1
98	2743.2	5232.4	2233.3	4439.2	3084.4	2613.3	3035.8	3217.9	4312.6	2950.3	21.5	25.6
99	2009	2320.6	2929.1	7397.2	3571.3	3188.5	2570.8	2726.6	3314.3	2729.5	22.3	26.8
100	5560.5	5908.2	2722.2	3333.8	3244.9	2748.3	2638.4	3267.7	3360.5	2891.6	21.8	26.5
101	2448.6	4276.1	4352.8	5286.6	3472.1	2765.2	2969.3	2628.8	4103.8	5541.3	20.6	27.6
102	4332.7	5540.1	7324.8	5980.1	3391.2	5152	3303.8	2347.9	2697.1	4129.3	20.9	27
103	2975.1	7291.6	3347.8	3378.7	4608.6	2204	2819.1	6030.7	6045.4	2951.7	21.6	30.6

Stream ID	Q13	Q14	Q15	Q16	Q17	Q18	Q19	Q20	Q21	Q22	RF1	RF2
104	5632.1	7276.4	2774.2	6067.6	3142.7	3336.2	4173.8	2722.7	3275.5	3169.8	20.4	26.2
105	2842.5	4152.1	7268.3	3465.3	2498.8	6054.7	2553.8	2651.5	3154.5	3055.7	20.7	26.4
106	3259.2	4246.1	2519.4	3575.8	2747.7	5281.1	2811.9	3028.7	4272.2	3991.9	21.9	27.4
107	5445	5253.6	2343.2	3117.6	2123.8	6069.8	3179.5	2452.7	3485.4	3792.8	21.9	25.5
108	6299.8	2924.2	2725.5	3321.6	2951.2	2421	4024.1	5268.6	4409.8	5610.5	22.9	25.1
109	3144.9	6212.2	3815.7	2430	7290.8	2053	3553.4	2889	5535.3	3512.6	20.6	27.9
110	3171.8	3145.1	3754.1	3485.6	2077.3	4351	2889.6	2959.9	5233.2	7313	21.3	27.2
111	2216.1	2794.7	2438.8	3637.8	3521.2	4076.1	2906.8	3018.8	2845.6	3613.6	20.7	27.2
112	5113.3	2939.4	3660	2226.6	7583.3	2951.6	2438.7	2859.3	3576.4	5482.8	21.6	26.4
113	2005.1	2845.5	2685.1	3052.5	2368.3	3781	3514.7	3470	5408.3	3447.3	21.1	26.6
114	4425.5	2726.2	6334.5	5172.3	3016.2	3023.6	2970.5	2771.2	2382.2	3149	22.6	26.4
115	2415.6	2899.5	6328.6	7407.2	3168.3	2778.2	2787	3105.7	3441.4	2885.9	21.8	26
116	7551.5	2707.2	3087	2885.6	2809.3	3314.9	2678.3	2095.8	4437.8	3291.3	21.7	26.5
117	3144.9	6427.9	2768.8	4456.6	7606.4	2008.8	2760.3	4121.1	3473.3	5504.8	21.4	26.5
118	4500.3	2065.1	2424.3	2355.7	7336.4	2999.6	4616.2	2216.6	4789.6	3444.4	22.4	25.7
119	6634.5	7356.9	3144.9	2053.7	2344	3087	3272.5	3795.1	2597.9	4186.1	21.7	27.9
120	2952.1	4099	2843.5	2573.1	2486	2641.5	2248.4	6685	2216	3779.2	19.9	27.8
121	2236	5384	4127	3488.8	2812	3086.6	3927.4	2936.2	5133.4	2893.1	22.6	25.8
122	6849.9	3415.8	7272.5	2433.4	5528.8	2053.7	3711.5	3214.5	3596.2	3381.3	21.6	26.8
123	3144.9	6744.4	2051.2	3780.1	4455.4	5021	2889	4181.4	3019	3550.7	20.9	26.6
124	3804.3	2435.7	3571.8	3377.5	3085.8	5110.9	3037.5	3028.8	7197.2	2872.6	20.7	26.5
125	2208	5377.9	3089.6	4088.9	7363.3	2121.3	3473.8	2674.6	4727.5	3628.6	21.5	24.9
126	2541.7	3262.4	3620.4	2872.2	3341	2995.6	3158.7	2268.8	2423.6	3113.3	21.9	28.9
127	2857.6	4970.3	3318.9	3653.2	4601.2	2088.9	4238.4	3925.3	7746.9	2848.4	21.9	26.7
128	3533.8	3086.8	7299.8	4435.2	2773.6	2857.8	5092.9	2878.9	6953.7	3221.8	21.9	25.9
129	4036.8	2840.1	5363.5	2057.6	2716.9	3625.7	2842.4	2739.8	4373	3397	21.5	26.4
130	2242	2743.4	2601.9	2881.6	2650.1	6961.6	3696	5348.4	4079.9	5083.1	21	26
131	3029.3	2933.5	4629.3	2291.6	4206.7	2613.9	7188	3623.1	2820.9	2144.8	20.9	27.9
132	7282.8	2843.3	3748.3	4274.7	3462.6	3090.6	3454.6	4104.2	2619.5	2345.7	21.5	24.8
133	3255	3748.3	7293.8	2095.6	4052.8	5281.8	3025.9	2448	3433.4	3169.1	21.1	26.8
134	2472.8	7268.4	7105.4	5053.9	4169.9	5284.6	2779.3	4798.8	2531.9	3745.3	21.3	27.9
135	2519.9	2778	4913.4	5138.6	3788	3168.4	2614.3	2254.5	2131	4985.8	21.2	26.6
136	2446.4	2153.3	2669.5	3668.5	7396.2	2823.2	4419.3	3001	7666.1	2556.7	20.5	26.4
137	3516.6	2184.4	2486.7	3195.9	3630.1	3305.1	2282.4	4864.9	3667.4	2506.7	21.9	26.8
138	3001.3	3270.3	3352.3	7262.4	4783.3	5147.3	2643.2	2182.5	3580.9	2242.8	21	27.4
139	2851.3	5125.4	2190.1	4680.3	3102.9	2438	3061.8	3709.8	5090.6	2585	21.2	26.6
140	2137.5	2130.1	2573.3	7394.1	3121.3	3776.8	2447.1	2852.2	3252.7	2525.1	21.1	26.2
141	4652.3	7716.6	2610.7	4202.7	3408.4	2939.9	2405.7	3608.3	3251.4	2664.4	20.2	25.8
142	2440.1	3703.9	4997	4884	3086.3	2945.3	2735.1	2851.5	3352.3	5083	20.9	27.1
143	4124.8	4696.3	7298	7787.2	3777.6	5133.1	2624.8	2183.8	3006.9	4597.5	21.1	26.2
144	3098.4	7285	3231.6	3185	5007.8	2084	2640.1	7829.2	5213.4	3066.1	21.5	26.7
145	4997	7290.5	2583.5	7867.3	5796.7	3325	3704.1	2894.9	3269	3495.8	21.1	26.2
146	2853	3709.9	7303.9	3241.6	2350.7	7831.9	2665.8	2628.9	3498.4	3233.1	21	26.3
147	3254.6	3728.5	2226	4887.4	2876.3	5074.3	2650.5	2991.4	4731.6	3395.4	20	25.6
148	4784.6	4871.2	2296.1	3286.3	2229.4	7835.8	3181.8	2536.5	3077.2	3352.3	21.7	26.1
149	8085.6	2490.5	2583.9	5041.7	2909.7	2320.8	3475.2	4907.3	4973.1	5073.1	19.6	27.7
150	3592.9	7989.8	3364.3	2464	7269.3	2121.3	4729.9	2677.6	5033.9	3183.8	20.2	25.5
151	3155.6	3618.9	3352.3	3132	2219.7	4951.7	3127.5	2532.6	4878.2	7151.6	20.4	25.3

Stream ID	Q13	Q14	Q15	Q16	Q17	Q18	Q19	Q20	Q21	Q22	RF1	RF2
152	2099.9	2519.3	2495.9	3493.6	3352	3645.1	2961.1	3244.3	3053.4	3674.7	20.6	24.8
153	4806.2	2935.2	4067.6	1803.3	7417.4	2492.1	2554.4	2786.6	2937	4987.3	19.7	26.6
154	2087.5	2742	2604.1	3193.7	2208.3	3451.5	3865.9	3204.6	4929.4	5063.7	19.3	26.7
155	4948.3	2523.1	8104.7	4926.7	2597.8	3200.4	2891.9	2805.5	2492.7	3187.4	19.6	26.1
156	2449	2515.8	8130.2	7262.6	3235.3	2587.3	2911.4	3194.3	3141	2786.6	20.7	27.6
157	6932.6	2495.9	3202.5	3074.4	2715.2	3228.4	2823.8	2183.2	4844.8	3557.5	20.5	26.8
158	3616.9	8150.5	2732.3	4933.7	7374.7	2121.3	2944.6	3749.2	3742.3	4965.6	19.6	26.8
159	4847.7	2098.1	2495.9	2222.4	7170	2492.1	4916.6	2180.9	4806.2	3269.2	19.2	26.4
160	8387.3	7140.5	3540.8	2258.7	2260.8	3102.1	3248.3	5593.7	2734.7	3727.4	19.8	25
161	3027.6	3733.8	2798.6	2334.9	2346.4	2689.6	2520.6	8449.1	1897.7	3467.4	20.4	26.2
162	2156.2	4958.4	3648.9	3778.7	3158.8	3220.7	3524.7	2513.7	4862.4	2769.8	19.4	25.8
163	8487	3230.4	7076.7	2506.2	5051.9	2080.1	5231.4	3555.5	3663.6	3324.1	20.3	24.8
164	3408.8	8508.5	2120.8	3559.9	5098.2	4683.8	2787.2	3606.7	3189.7	3669.6	20.6	25.5
165	3494.8	2422.5	3689	3324.3	3238.1	4801.9	3163.6	2458.1	8970.2	2885.6	20.7	25.9
166	2072.1	4938.2	3173.9	3675.7	7151	2205.1	3413.5	2608.5	5671.3	3730.2	20.4	26.5
167	2612.9	3480.4	3484.9	2904.5	3423.4	2440.5	3084.4	2207.3	2503.7	3166.3	21.7	26.8
168	2981.9	4587	3193.4	3651.9	5206.8	2081.2	3778.4	5100	7450.7	2911.8	21.5	27.9
169	3670.6	3105.9	6952.8	4874.4	2901	2442.9	5003.4	3072.8	8734.5	3585.4	22	28.3
170	3610.9	3045.6	4995.8	2155.4	2838.8	3670.6	2728.3	2945.8	6562.2	3288.6	21.2	27.7
171	2184.4	2934.7	2710	3060.2	2557.2	8742.2	3727.6	4976.7	3586	4872.2	21.9	26.5
172	3045.5	3455.9	4406.2	2224.4	3656.4	2733.8	8959.6	3181.9	2846.4	2352.4	21	26.2
173	7070.6	2796	3496.8	5845.1	3365.5	3261.5	3449	3636.4	2278.9	2090.5	21.1	26.2
174	3297.7	3168.9	6942.2	2421.8	3681	4945.4	3238.3	2289.6	3241.1	3628.8	20.5	25.7
175	2525.8	6917.3	8900.9	4833.1	3703.5	4948.9	2852.4	4978.5	2303.2	3733.8	21.8	27.4
176	2404.3	2733.4	6764	4364.5	3668.6	3108.3	2546.8	1788.6	2592.5	5377.7	21.7	26.7
177	2557.9	2209.1	2733.8	3151.6	7066.7	2846.6	5671.3	3062.2	9444.4	2308.5	21.4	27.1
178	3312.7	2184.2	2235	3583.3	3202.7	3266.1	2231.4	4574.3	3743.7	2274.6	22.2	27.8
179	3065.5	3105.7	3168.8	9034.7	4477	6894.7	2669.1	2386.4	3320.5	2115.2	21.4	24.4
180	2774.6	4551.8	2069.5	5428.9	3404.8	2583.1	3198.2	3269.3	6144.5	2352.8	22	26.5
181	2556.8	1760.7	2176.7	7076.5	3407.7	3188.6	2549.4	2951.8	3171.1	2498	21.6	25.1
182	4408.4	9495.5	2543.7	5843.5	3408.9	3035.3	2269.8	3652.7	3192.6	2692.6	21.6	26.8
183	2320.2	3568.2	5447.2	4573.3	3546	3109.4	2824.6	2776.8	2933.6	4327.1	21.5	26.4
184	3642.5	4382.8	6983.7	9569.6	4274.5	4633.5	2443.1	1835	2942.6	5284.3	22	26.7
185	3481.5	6958.4	3046.9	2614.1	5583.8	1764.3	2286.9	9613.2	4361.9	3095.8	20.9	26.8
186	4327.1	6961.3	2472.1	9648.9	6650.7	2940.8	3044.7	2837.5	3185.9	3570.9	21.5	29.6
187	2734	3476.2	6976.2	2980.4	2416.2	9616	2598.9	2760	3530.8	3589.6	21.4	26.6
188	3093.9	3631.4	2395.8	6461	2906.7	4550	2794	3316.9	5427.8	2823.6	21.7	26.6
189	4546.3	4406.8	2319.5	3176.5	2674.9	9651.7	3793.2	2417.6	2737.4	2576	22.1	26.3
190	9655.6	2270.5	2451.9	6484.7	2829.6	2356	3162.8	4616.7	5441.8	4413.4	20.9	24.9
191	3556.5	9680.7	2840.8	2308.2	7071.6	2425	6808.3	2815.2	4276.3	2990.4	22.7	25.1
192	2962.5	3544.3	2779	2987.5	2601.1	5643.9	3201.6	2311	4410.2	7100.9	22.3	26.2
Min.	84.3	6.1	7.1	18.5	53.1	245	68.6	19.3	208.8	23.3	18.9	22.4
Avg.	3620.5	4108.3	3956.9	3803.5	4020.4	3564.9	3217.3	3295	3870.7	3571.4	20.9	26.5
Max.	9655.6	9680.7	9240.6	9648.9	9020.4	9651.7	8959.6	9613.2	9499.8	8804.2	22.9	30.7