

TPC Benchmark™ H Full Disclosure Report

Dell PowerEdge R710 *using* **EXASolution 4.0**

First Edition
April 5, 2011

*Dell PowerEdge R710
using
EXASolution 4.0*

Dell believes that the information in this document is accurate as of the publication date. The information in this document is subject to change without notice. We assume no responsibility for any errors that may appear in this document. The pricing information in this document is believed to accurately reflect the current prices as of the publication date. However, we provide no warranty of the pricing information in this document.

Benchmark results are highly dependent upon workload, specific application requirements, system design and implementation. Relative system performance will vary as a result of these and other factors. Therefore, TPC Benchmark™ H should not be used as a substitute for a specific customer application benchmark when critical capacity planning and/or product evaluation decisions are contemplated.

All performance data contained in this report were obtained in a rigorously controlled environment. Results obtained in other operating environments may vary significantly. We do not warrant or represent that a user can or will achieve similar performance. No warranty of system performance or price/performance is expressed or implied in this report.

Copyright © 2011 Dell Inc. All rights reserved.

All rights reserved. Permission is hereby granted to reproduce this document in whole or in part provided the copyright notice printed above is set forth in full text on the title page of each item reproduced.

PowerEdge R710 is a trademark of Dell.

EXASOL, EXASolution and EXACluster OS are trademarks of EXASOL AG.

Intel and Xeon are trademarks of Intel Corporation.

TPC Benchmark and TPC-H are trademarks or registered trademarks of the Transaction Processing Performance Council (TPC).

All other brand or product names mentioned are considered trademarks or registered trademarks of their respective owners.



Dell PowerEdge R710 using EXASolution 4.0

TPC-H Rev. 2.14.0

Report Date
April 5, 2011

Total System Cost

Composite Query per Hour Metric

Price / Performance

\$ 82,963**377,012.0**
QphH@100GB**\$ 0.22**
\$ / QphH@100GB

Database Size

Database Manager

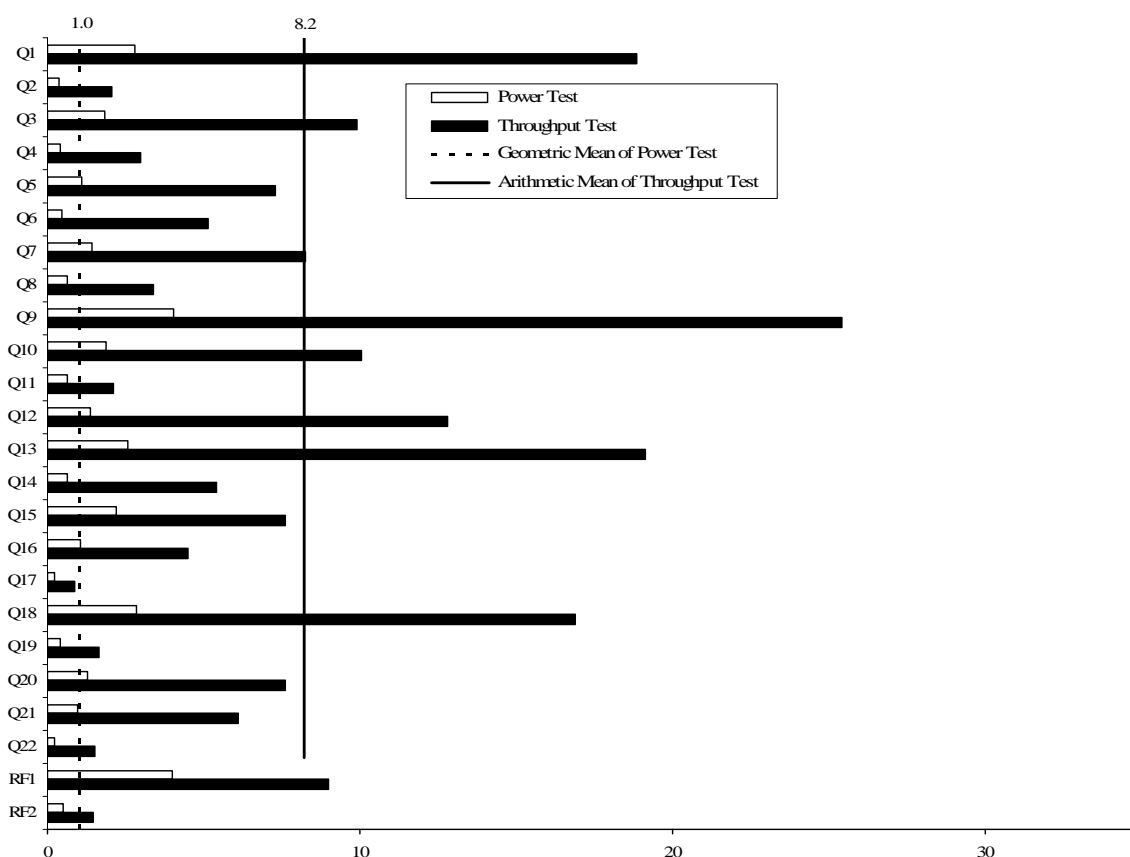
Operating System

Other Software

Availability Date

100 GB**EXASolution 4.0****EXACluster OS 4.0****C++ Compiler****October 1, 2011**

Query Times in seconds



Storage Redundancy Levels:

Database Load Time = 00:27:39

Base Tables

2

Load Includes Backup: N

Auxiliary Data Structures

2

Total Data Storage / Database Size = 22.35

DBMS Temporary Space

1

Memory to Database Size Percentage = 48.0

OS and DBMS Software

1

System Configuration:

2 x Dell PowerEdge R710 Server, each with:

2 Intel Xeon X5690 QC 3.46 GHz processors (each is 1 chip, 6 cores, 12 threads)

24 GB RAM

2x 600 GB (10k rpm) internal SAS disks

Total Storage: 2,235 GB (GB = 1024*1024*1024 bytes)



Dell PowerEdge R710 using EXASolution 4.0

TPC-H Rev. 2.14.0

Report Date
April 5, 2011

Description	Part Number	Pricing	Unit Price	Qty	Extended Price	3 yr. Maint. Price
Server Hardware						
R710 with Chassis for up to 8, 2.5-in. Hard Drives	210-31964	1	\$11,618.94	2	\$23,237.88	included
Intel Xeon X5690,3.46GHz,12M,XN,6.4GT/s,6C	213-12953	1	\$0.00	2	\$0.00	
Intel Xeon X5690,3.46GHz,12M,XN,6.4GT/s,6C	374-13955	1	\$0.00	2	\$0.00	
HO Pwr Sply,Redundant,870W UPG	450-12451	1	\$0.00	2	\$0.00	
Rizer with 2 PCIe x8 +2 PCIe x4 Slots	330-10106	1	\$0.00	2	\$0.00	
24GB,6x4G,1333M,2R,RDIMM	370-19192	1	\$0.00	2	\$0.00	
iDRAC6 Enterprise	565-10114	1	\$0.00	2	\$0.00	
PERC H700 INTG RAID CTL 512MB,x8	405-11392	1	\$0.00	2	\$0.00	
HDD, 600GB 10K SAS,6G,2.5,Hot Plug	400-20817	1	\$0.00	4	\$0.00	
DVD+-RW, SATA, INTERNAL	429-14713	1	\$0.00	2	\$0.00	
Broadcom GbE 4P LOM with TOE	541-10013	1	\$0.00	2	\$0.00	
Qlogic Infiniband Adapter QLE7340-CK	690-86219	1	\$0.00	2	\$0.00	
Sliding Ready Rack Rails with Cable Management	770-10763	1	\$0.00	2	\$0.00	
3Yr ProSupport and Next Business Day On-Site Service	710-16539	1	\$0.00	2	\$0.00	
PE 4220 42U Rack with Doors and Side Panels	210-26840	1	\$2,705.21	1	\$2,705.21	
DELL PowerConnect 5524 Switch 24 GbE Ports	210-34478	1	\$1,527.51	1	\$1,527.51	
RPS720 External Red. PSU for PC 5524 Switch	450-16399	1	\$770.87	1	\$770.87	
Dell Discount (30%)		1			-\$8,472.44	
PATCH CABLE CAT5E 5M GREY STP	A2900570	1	\$4.39	4	\$17.56	
Mice : Dell Optical USB	570-11147	1	\$9.78	1	\$9.78	
Keyboard Dell Standard Quietkey USB	580-14755	1	\$15.53	1	\$15.53	
Qlogic 12300-BS18, 18-port Infiniband QDR Switch	A4897759	1	\$7,305.91	1	\$7,305.91	
Qlogic 5.0M Copper 26 AWG QSFP to QSFP Passive	A4897774	1	\$160.33	2	\$320.66	
DELL 17" TFT Display E1709W	855-10385	1	\$141.22	3	\$423.66	
Dell Discount (10%)		1			-\$809.31	
Subtotal					\$27,052.82	\$0.00
Storage						
No external storage required						
Software						
EXASolution 4.0 licence (1GB DB RAM*)	EXA-1G	2	\$1,560.00	32	\$49,920.00	
EXASOL Support 24x7 (4% per year)	EXA-SUP	2				\$5,990.40
Subtotal					\$49,920.00	\$5,990.40
Total					\$76,972.82	\$5,990.40

3-Year Cost of Ownership \$82,963**QphH Rating: 377,012.0****\$/QphH@100GB: \$0.22**

Price Key: 1-Dell: Pricing may be verified by calling 1-800-BUY-DELL
contact: Ronny Lenz, ronny_lenz@dell.com
and referencing quote # 24898030.2
2-EXASOL, contact: Steffen Weissbarth, sales@exasol.com

* Memory size allocated to EXASolution (see also section 7.2)

All discounts are based on list prices and for similar quantities and configurations.

Results independently audited by: Francois Raab of InfoSizing, Inc. (www.sizing.com)

Prices used in TPC benchmarks reflect the actual prices a customer would pay for a one-time purchase of the stated components. Individually negotiated discounts are not permitted. Special prices based on assumptions about past or future purchases are not permitted. All discounts reflect standard pricing policies for the listed components. For complete details, see the pricing sections of the TPC benchmark specifications. If you find that the stated prices are not available according to these terms please inform the TPC at pricing@tpc.org. Thank you.



Dell PowerEdge R710 using EXASolution 4.0

TPC-H Rev. 2.14.0

Report Date
April 5, 2011

Numerical Quantities

Measurement Results

Database Scale Factor	100 GB
Total Data Storage / Database Size	22.35
Start of Database Load	07:26:42
End of Database Load	07:54:21
Database Load Time	0h 27m 39s
Query Streams for Throughput Test	9
TPC-H Power	362,922.5
TPC-H Throughput	391,648.4
TPC-H Composite Query-per-Hour Metric (QphH@100GB)	377,012.0
Total System Price Over 3 Years	\$82,963
TPC-H Price/ Performance Metric (\$/QphH@100GB)	\$0.22

Measurement Interval

Measurement Interval in Throughput Test (Ts)	182 seconds
--	-------------

Duration of Stream Execution

Stream ID	Seed	Start Date	Start Time	End Date	End Time	Duration
Stream 0	329075421	2011-03-29	07:57:55	2011-03-29	07:58:29	0:34 min
Stream 1	329075422	2011-03-29	07:58:29	2011-03-29	08:01:26	2:57 min
Stream 2	329075423	2011-03-29	07:58:29	2011-03-29	08:01:29	3:00 min
Stream 3	329075424	2011-03-29	07:58:29	2011-03-29	08:01:29	3:00 min
Stream 4	329075425	2011-03-29	07:58:29	2011-03-29	08:01:28	2:59 min
Stream 5	329075426	2011-03-29	07:58:29	2011-03-29	08:01:29	3:00 min
Stream 6	329075427	2011-03-29	07:58:29	2011-03-29	08:01:29	3:00 min
Stream 7	329075428	2011-03-29	07:58:29	2011-03-29	08:01:26	2:57 min
Stream 8	329075429	2011-03-29	07:58:29	2011-03-29	08:01:28	2:59 min
Stream 9	329075430	2011-03-29	07:58:29	2011-03-29	08:01:30	3:01 min
Refresh		2011-03-29	07:58:29	2011-03-29	08:00:05	1:36min



Dell PowerEdge R710 using EXASolution 4.0

TPC-H Rev. 2.14.0

Report Date
April 5, 2011

TPC-H Timing Intervals (in seconds)

Query	Power	Stream 1	Stream 2	Stream 3	Stream 4	Stream 5	Stream 6	Stream 7	Stream 8	Stream 9	Min Q _i	Avg Q _i	Max Q _i
1	2.8	17.7	18.5	19.1	17.8	18.2	19.3	18.2	22.4	18.7	17.7	18.9	22.4
2	0.3	1.6	2.3	1.9	2.2	2.2	1.9	1.9	1.8	3.1	1.6	2.1	3.1
3	1.8	11.7	9.0	8.1	8.8	10.6	12.0	10.0	9.3	9.7	8.1	9.9	12.0
4	0.4	2.5	2.4	3.0	2.7	5.3	3.0	2.9	2.8	2.3	2.3	3.0	5.3
5	1.1	7.6	7.6	8.1	7.8	6.8	7.4	6.7	7.3	6.3	6.3	7.3	8.1
6	0.5	4.5	5.1	8.0	4.6	4.7	4.8	5.0	4.5	4.8	4.5	5.1	8.0
7	1.4	8.0	8.7	8.9	7.7	8.2	9.1	7.5	8.8	7.4	7.4	8.3	9.1
8	0.6	3.1	3.4	3.9	2.9	2.8	3.8	3.1	3.4	3.9	2.8	3.4	3.9
9	4.0	25.0	25.8	25.5	25.0	25.1	26.7	24.8	24.5	26.4	24.5	25.4	26.7
10	1.9	8.9	9.8	10.3	10.5	9.8	11.1	9.9	9.5	10.5	8.9	10.0	11.1
11	0.6	2.3	1.9	2.0	2.3	2.2	2.0	2.2	1.7	2.4	1.7	2.1	2.4
12	1.4	13.2	13.1	12.2	13.7	13.0	11.7	12.1	13.1	13.3	11.7	12.8	13.7
13	2.6	19.0	19.0	18.8	18.7	18.8	19.3	18.8	18.5	21.2	18.5	19.1	21.2
14	0.7	4.9	5.5	5.1	7.9	5.1	4.6	5.3	5.4	4.9	4.6	5.4	7.9
15	2.2	8.2	7.3	7.2	7.3	8.1	7.4	7.3	7.8	8.0	7.2	7.6	8.2
16	1.1	4.7	7.3	4.4	4.5	4.5	4.4	4.5	4.1	2.1	2.1	4.5	7.3
17	0.2	0.8	1.1	0.9	0.8	0.8	0.7	0.8	0.7	1.1	0.7	0.9	1.1
18	2.8	15.9	15.9	16.5	17.5	17.0	17.1	19.3	15.8	17.1	15.8	16.9	19.3
19	0.4	1.5	1.6	1.5	1.7	1.6	1.3	1.8	2.1	1.7	1.3	1.7	2.1
20	1.3	7.8	7.7	7.4	7.0	7.4	7.2	7.6	8.0	8.5	7.0	7.6	8.5
21	0.9	6.8	5.5	6.2	6.5	6.7	4.5	6.4	6.1	6.3	4.5	6.1	6.8
22	0.2	1.5	1.8	1.5	1.5	1.5	1.3	1.6	1.4	1.4	1.3	1.5	1.8
RF1	4.0	6.2	8.1	8.8	8.8	8.9	11.3	9.6	9.3	10.1	6.2	9.0	11.3
RF2	0.5	1.2	3.6	1.5	1.3	1.4	1.1	1.4	1.7	1.8	1.1	1.7	3.6

Table of Contents

TPC BENCHMARK H OVERVIEW	8
0 GENERAL ITEMS.....	9
0.1 BENCHMARK SPONSOR	9
0.2 PARAMETER SETTINGS	9
0.3 CONFIGURATION DIAGRAM.....	9
1 CLAUSE 1: LOGICAL DATABASE DESIGN RELATED ITEMS.....	11
1.1 DATABASE DEFINITION STATEMENTS	11
1.2 PHYSICAL ORGANIZATION	11
1.3 HORIZONTAL PARTITIONING	11
1.4 REPLICATION	11
2 CLAUSE 2: QUERIES AND REFRESH FUNCTIONS	12
2.1 QUERY LANGUAGE	12
2.2 VERIFYING METHOD FOR RANDOM NUMBER GENERATION.....	12
2.3 GENERATING VALUES FOR SUBSTITUTION PARAMETERS.....	12
2.4 QUERY TEXT AND OUTPUT DATA FROM QUALIFICATION DATABASE.....	12
2.5 QUERY SUBSTITUTION PARAMETERS AND SEEDS USED.....	12
2.6 ISOLATION LEVEL	12
2.7 SOURCE CODE OF REFRESH FUNCTIONS.....	12
3 CLAUSE 3: DATABASE SYSTEM PROPERTIES.....	13
3.1 ACID PROPERTIES	13
3.2 ATOMICITY REQUIREMENTS	13
3.3 CONSISTENCY REQUIREMENTS	13
3.4 ISOLATION REQUIREMENTS.....	14
3.5 DURABILITY REQUIREMENTS.....	15
4 CLAUSE 4: SCALING AND DATABASE POPULATION	17
4.1 ENDING CARDINALITY OF TABLES	17
4.2 DISTRIBUTION OF TABLES AND LOGS ACROSS MEDIA	17
4.3 MAPPING OF DATABASE PARTITIONS/REPLICATION	17
4.4 IMPLEMENTATION OF RAID.....	17
4.5 DBGEN MODIFICATIONS	17
4.6 DATA BASE LOAD TIME.....	18
4.7 DATA STORAGE RATIO	18
4.8 DATABASE LOAD MECHANISM DETAILS AND ILLUSTRATION	18
4.9 QUALIFICATION DATABASE CONFIGURATION.....	18
4.10 MEMORY TO DATABASE SIZE PERCENTAGE.....	18
5 CLAUSE 5: PERFORMANCE METRICS AND EXECUTION RULES RELATED ITEMS	19
5.1 SYSTEM ACTIVITY BETWEEN LOAD AND PERFORMANCE TESTS	19
5.2 STEPS IN THE POWER TEST.....	19
5.3 TIMING INTERVAL FOR EACH QUERY AND REFRESH FUNCTIONS.....	19
5.4 NUMBER OF STREAMS FOR THE THROUGHPUT TEST	19
5.5 START AND END DATE/TIME OF EACH QUERY STREAM	19
5.6 TOTAL ELAPSED TIME OF THE MEASUREMENT INTERVAL	19
5.7 REFRESH FUNCTION START DATE/TIME AND FINISH DATE/TIME	19
5.8 TIMING INTERVALS FOR EACH QUERY AND EACH REFRESH FUNCTION FOR EACH STREAM.....	19
5.9 PERFORMANCE METRICS.....	19
5.10 THE PERFORMANCE METRIC AND NUMERICAL QUANTITIES FROM BOTH RUNS	20
5.11 SYSTEM ACTIVITY BETWEEN PERFORMANCE TESTS	20
6 CLAUSE 6: SUT AND DRIVER IMPLEMENTATION RELATED ITEMS	21
6.1 DRIVER	21
6.2 IMPLEMENTATION SPECIFIC LAYER (ISL)	21
6.3 PROFILE-DIRECTED OPTIMIZATION.....	21
7 CLAUSE 7: PRICING.....	22
7.1 HARDWARE AND SOFTWARE USED IN THE PRICED SYSTEM.....	22
7.2 TOTAL THREE YEAR PRICE	22
7.3 AVAILABILITY DATE.....	22
8 CLAUSE 8: FULL DISCLOSURE.....	23
8.1 SUPPORTING FILES INDEX TABLE.....	23
9 CLAUSE 9: AUDIT RELATED ITEMS	24
9.1 AUDITOR'S REPORT	24
APPENDIX A: PRICING INFORMATION.....	27

TPC Benchmark H Overview

The TPC Benchmark™ H (TPC-H) is a Decision Support benchmark. It is a suite of business-oriented adhoc queries and concurrent modifications. The queries and the data populating the database have been chosen to have broad industry-wide relevance while maintaining a sufficient degree of ease of implementation. This benchmark illustrates Decision Support systems that:

- Examine large volumes of data
- Execute queries with a high degree of complexity
- Give answers to critical business questions

TPC-H evaluates the performance of various Decision Support systems by the execution of sets of queries against a standard database under controlled conditions. The TPC-H queries:

- Give answers to real-world business questions
- Simulate generated ad-hoc queries
- Are far more complex than most OLTP transactions
- Include a rich breadth of operators and selectivity constraints
- Generate intensive activity on the part of the database server component of the system under test
- Are executed against a database complying to specific population and scaling requirements
- Are implemented with constraints derived from staying closely synchronized with an on-line production database

0 General Items

0.1 Benchmark Sponsor

A statement identifying the benchmark sponsor(s) and other participating companies must be provided.

This TPC-H benchmark is sponsored by Dell Inc. The benchmark implementation was developed and engineered by EXASOL AG.

0.2 Parameter Settings

Settings must be provided for all customer-tunable parameters and options which have been changed from the defaults found in actual products, including but not limited to:

- Database Tuning Options
- Optimizer/Query execution options
- Query processing tool/language configuration parameters
- Recovery/commit options
- Consistency/locking options
- Operating system and configuration parameters
- Configuration parameters and options for any other software component incorporated into the pricing structure
- Compiler optimization options

This requirement can be satisfied by providing a full list of all parameters and options, as long as all those which have been modified from their default values have been clearly identified and these parameters and options are only set once.

The Supporting Files Archive contains the system and database parameters used in this benchmark.

0.3 Configuration Diagram

Diagrams of both measured and priced configurations must be provided, accompanied by a description of the differences. This includes, but is not limited to:

- Number and type of processors.
- Size of allocated memory, and any specific mapping/partitioning of memory unique to the test.
- Number and type of disk units (and controllers, if applicable).
- Number of channels or bus connections to disk units, including their protocol type.
- Number of LAN (e.g. Ethernet) Connections, including routers, workstations, terminals, etc., that were physically used in the test or are incorporated into the pricing structure.
- Type and the run-time execution location of software components (e.g., DBMS, query processing tools/languages, middle-ware components, software drivers, etc.).

The System Under Test (SUT), depicted in Figure 1.1, that was used to obtain the results in this benchmark consists of the following components:

System components

- 2 Dell PowerEdge R710 servers, each with:
 - 2 CPU (Intel® Xeon X5690, 3.46GHz)
 - 24 GB RAM
 - 2 600 GB SAS 10.000 rpm
 - 1 RAID controller onboard (BBU included)
 - 4 Ethernet Ports
 - 1 Infiniband network adapter
- 1 Dell PowerConnect 5524 (1Gb Ethernet Switch, 24 ports)
- 1 QLogic 12300-BS18 (40Gb Infiniband Switch, 18 ports)

Network is 1Gb Ethernet and 40Gb Infiniband. Each server contains 2 physical disks that are configured as a mirrored pair at the controller level (HW RAID 1).

Priced configuration and benchmarked configuration are identical.

DBMS-Cluster

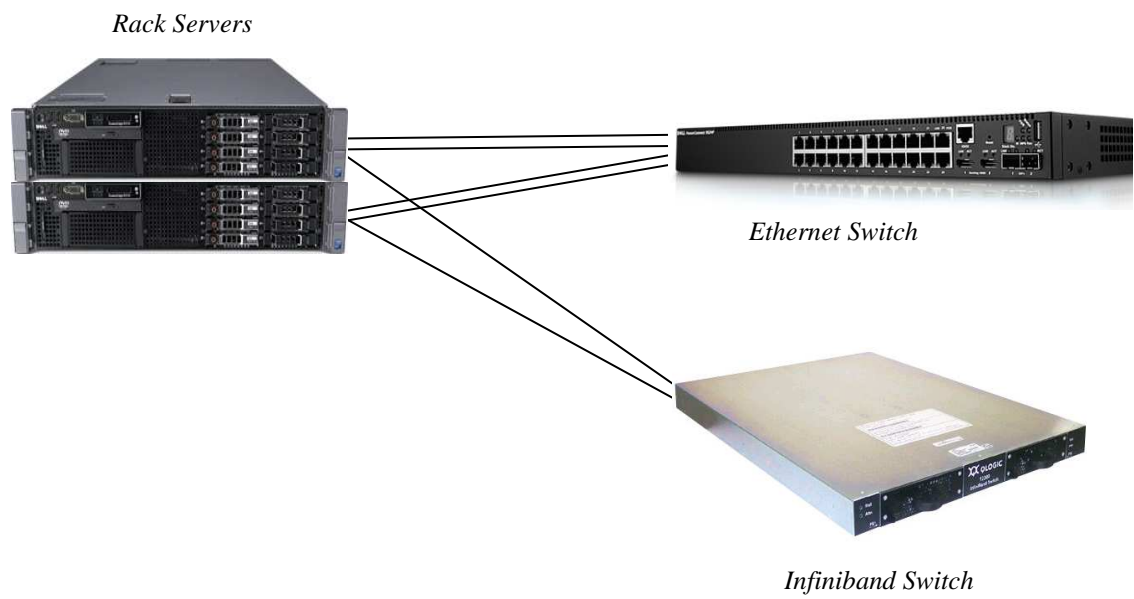


Figure 1.1: Benchmarked and priced system configuration

1 Clause 1: Logical Database Design Related Items

1.1 Database Definition Statements

Listings must be provided for all table definition statements and all other statements used to set up the test and qualification databases (8.1.2.1).

The Supporting Files Archive contains the build scripts that define the tables and indices for the TPC-H database.

1.2 Physical Organization

The physical organization of tables and indices, within the test and qualification databases, must be disclosed. If the column ordering of any table is different from that specified in Clause 1.4, it must be noted.

Physical organization requires no user input. All the database data is placed on the same partition.

1.3 Horizontal Partitioning

Horizontal partitioning of tables and rows in the test and qualification databases (see Clause 1.5.4) must be disclosed.

Horizontal partitioning is used. The data is automatically distributed on the cluster nodes using a hash algorithm. The columns used for the hashing are controlled by DDL statements (see Supporting Files Archive).

1.4 Replication

Any replication of physical objects must be disclosed and must conform to the requirements of Clause 1.5.6.

No replication was used.

2 Clause 2: Queries and Refresh Functions

2.1 Query Language

The query language used to implement the queries must be identified.

SQL was the query language uniquely used throughout this benchmark.

2.2 Verifying Method for Random Number Generation

The method of verification for the random number generation must be described unless the supplied DBGEN and QGEN were used.

TPC supplied versions 2.14.0 of DBGEN and QGEN were used in this benchmark.

2.3 Generating Values for Substitution Parameters

The method used to generate values for substitution parameters must be disclosed. If QGEN is not used for this purpose, then the source code of any non-commercial tool used must be disclosed. If QGEN is used, the version number, release number, modification number, and patch level of QGEN must be disclosed.

QGEN version 2.14.0 was used to generate the substitution parameters.

2.4 Query Text and Output Data from Qualification Database

The executable query text used for query validation must be disclosed along with the corresponding output data generated during the execution of the query text against the qualification database. If minor modifications (see Clause 2.2.3) have been applied to any functional query definition or approved variants in order to obtain executable query text, these modifications must be disclosed and justified. The justification for a particular minor query modification can apply collectively to all queries for which it has been used. The output data for the power and throughput tests must be made available electronically upon request.

The Supporting Files Archive contains the qualification query text and query output. The standard queries were used throughout with the following modifications:

- Quoting of reserved keyword „value“ (Q11)
- LIMIT syntax used to restrict the number of output rows (Q2,Q3,Q10,Q18,Q21)
- Used approved variant A of Q15 (Appendix B): ‘with clause’ instead of “create view/drop view”

2.5 Query Substitution Parameters and Seeds Used

The query substitution parameters used for all performance tests must be disclosed in tabular format, along with the seeds used to generate these parameters.

The Supporting Files Archive contains the seed and query substitution parameters.

2.6 Isolation Level

The isolation level used to run the queries must be disclosed. If the isolation level does not map closely to the levels defined in Clause 3.4, additional descriptive detail must be provided.

The queries and transactions were run with the isolation level 3.

2.7 Source Code of Refresh Functions

The details of how the refresh functions were implemented must be disclosed (including source code of any non-commercial program used).

The Supporting Files Archive contains the source code of the refresh functions.

3 Clause 3: Database System Properties

3.1 ACID Properties

The ACID (Atomicity, Consistency, Isolation, and Durability) properties of transaction processing systems must be supported by the system under test during the timed portion of this benchmark. Since TPC-H is not a transaction processing benchmark, the ACID properties must be evaluated outside the timed portion of the test.

All ACID tests were conducted according to specification. The Supporting Files Archive contains the source code of the ACID test scripts.

3.2 Atomicity Requirements

The system under test must guarantee that transactions are atomic; the system will either perform all individual operations on the data, or will assure that no partially completed operations leave any effects on the data.

3.2.1 Atomicity of the Completed Transactions

Perform the ACID Transaction for a randomly selected set of input data and verify that the appropriate rows have been changed in the ORDERS, LINEITEM, and HISTORY tables.

The following steps were performed to verify the atomicity of the completed ACID transactions:

1. The total price from the ORDERS table and the extended price from the LINEITEM table were retrieved for a randomly selected order key.
2. One ACID Transaction was performed using the order key from step 1.
3. The ACID Transaction was committed.
4. The total price from the ORDERS table and the extended price from the LINEITEM table were retrieved for the same order key.
5. It was verified that the appropriate rows had been changed.

3.2.2 Atomicity of Aborted Transactions

Perform the ACID Transaction for a randomly selected set of input data, substituting a ROLLBACK of the transaction for the COMMIT of the transaction. Verify that the appropriate rows have not been changed in the ORDERS, LINEITEM, and HISTORY tables.

The following steps were performed to verify the atomicity of the completed ACID transactions:

1. The total price from the ORDERS table and the extended price from the LINEITEM table were retrieved for a randomly selected order key.
2. One ACID Transaction was performed using the order key from step 1. The transaction was stopped prior to the commit.
3. The ACID Transaction was rolled back.
4. The total price from the ORDERS table and the extended price from the LINEITEM table were retrieved for the same order key.
5. It was verified that the appropriate rows had not been changed.

3.3 Consistency Requirements

Consistency is the property of the application that requires any execution of transactions to take the database from one consistent state to another. A consistent state for the TPC-H database is defined to exist when:

$$O_TOTALPRICE = \sum(\text{trunc}(\text{trunc}(L_EXTENDEDPRICE * (1 - L_DISCOUNT), 2) * (1 + L_TAX), 2))$$

For each ORDER and LINEITEM defined by (O_ORDERKEY = L_ORDERKEY).

3.3.1 Consistency Test

Verify that ORDERS and LINEITEM tables are initially consistent, submit the prescribed number of ACID Transactions with randomly selected input parameters, and re-verify the consistency of the ORDERS and LINEITEM.

The following queries were executed before and after the durability tests to show that the database was always in a consistent state both initially and after submitting transactions:

```

SELECT *
FROM (
    SELECT o_orderkey, o_totalprice - sum(trunc(trunc(l_extendedprice *
        (1-l_discount),2)*(1+l_tax),2)) part_res
    FROM orders, lineitem
    WHERE o_orderkey=l_orderkey
    GROUP BY o_orderkey, o_totalprice
) WHERE not part_res=0;

```

The following steps were performed to verify the consistency of ACID transactions:

1. The consistency of the ORDERS and LINEITEM tables was verified.
2. 100 transactions for each of the 15 execution streams were prepared.
3. The 100 ACID transactions per stream were executed from 15 execution streams.
4. The consistency of the ORDERS and LINEITEM tables was re-verified.

3.4 Isolation Requirements

Operations of concurrent transactions must yield results, which are indistinguishable from the results, which would be obtained by forcing each transaction to be serially executed to completion in some order.

The steps of the isolation tests were adopted to the EXASOL isolation environment.

3.4.1 Isolation Test 1 – Read-Write Conflict with Commit

Demonstrate isolation for the read-write conflict of a read-write transaction and a read-only transaction when the read-write transaction is committed

The following steps were performed to satisfy the test of isolation for a read-only and a read-write committed transaction:

5. Start a query and verify that the row was retrieved.
6. Start an update transaction, read and update the same row. Wait before commit.
7. Start the same query and verify that the row retrieved has not changed.
8. Commit the update transaction
9. Start the same query and verify that the new row is retrieved

3.4.2 Isolation Test 2 – Read-Write Conflict with Rollback

Demonstrate isolation for the read-write conflict of a read-write transaction and a read-only transaction when the read-write transaction is rolled back.

The following steps were performed to satisfy the test of isolation for a read-only and a rolled back read-write transaction:

1. Start a query and verify that the row was retrieved.
2. Start an update transaction, read and update the same row. Wait before commit.
3. Start the same query and verify that the row retrieved has not changed.
4. Rollback the update transaction
5. Start the same query and verify that the old row (step 1) is retrieved

3.4.3 Isolation Test 3 – Write-Write Conflict with Commit

Demonstrate isolation for the write-write conflict of two update transactions when the first transaction is committed.

The following steps were performed to verify isolation of two update transactions:

1. Start a query and verify that the row was retrieved.
2. Start an update transaction, read and update the same row. Wait before commit.
3. Start another update transaction, read and try to update the same row and verify that the transaction is forced to rollback.
4. commit the update transaction
5. Start the same query and verify that the new row is retrieved

3.4.4 Isolation Test 4 – Write-Write Conflict with Rollback

Demonstrate isolation for the write-write conflict of two update transactions when the first transaction is rolled back.

The following steps were performed to verify isolation of two update transactions after the first one is rolled back:

1. Start a query and verify that the row was retrieved.
2. Start an update transaction, read and update the same row. Wait before commit.
3. Start another update transaction, read and try to update the same row and verify that the transaction is forced to rollback.
4. Rollback the update transaction
5. Start the same query and verify that the old row (step 1) is retrieved.

3.4.5 Isolation Test 5 – Concurrent Read and Write Transactions on Different Tables

Demonstrate the ability of read and write transactions affecting different database tables to make progress concurrently.

The following steps were performed to demonstrate the ability of read and write transactions affecting different tables to make progress concurrently:

1. Start a query and verify that the row was retrieved.
2. Start an update transaction, read and update the same row. Wait before commit.
3. Start a second transaction that does the following:
Select random values of PS_PARTKEY and PS_SUPPKEY. Return all columns of the PARTSUPP table for which PS_PARTKEY and PS_SUPPKEY are equal to the selected values.
4. Verify that the read transaction completes.
5. Commit the update transaction.
6. Start the same query and verify that the new row is retrieved.

3.4.6 Isolation Test 6 – Update Transactions during Continuous Read-Only Query Stream

Demonstrate the continuous submission of arbitrary (read-only) queries against one or more tables of the database does not indefinitely delay update transactions affecting those tables from making progress.

The following query was used to ensure sufficient execution time to perform the test:

```
SELECT l1.l_quantity,  
       SUM(l2.l_extendedprice),  
       SUM(l3.l_extendedprice),  
       SUM(l3.l_quantity)  
FROM   lineitem l1, lineitem l2, lineitem l3, lineitem l4, lineitem l5  
WHERE  l1.l_shipdate <= DATE '1998-12-01' -0  
       AND l1.l_orderkey = l2.l_orderkey  
       AND l1.l_linenumber = l2.l_linenumber  
       AND l1.l_extendedprice = l3.l_extendedprice  
       AND l3.l_quantity < 30  
       AND l4.l_quantity = l1.l_quantity  
       AND l4.l_orderkey < 150  
       AND l5.l_receiptdate = l1.l_receiptdate  
       AND l5.l_partkey < 140  
GROUP BY l1.l_quantity;  
COMMIT;
```

1. A Transaction, T1, which executed the above query against the qualification database, was started using a randomly selected DELTA.
2. An ACID Transaction, T2, was started for a randomly selected O_KEY, L_KEY and DELTA.
3. T2 completed and appropriate rows in the ORDERS, LINEITEM and HISTORY tables had been changed.
4. T1 was still executing.
5. Transaction T1 completed executing the query.

3.5 Durability Requirements

The tested system must guarantee durability: the ability to preserve the effects of committed transactions and insure database consistency after recovery from any one of the failures listed in Clause 3.5.2.

EXASolution has serializable isolation level with table level lock concurrency control. The ACID Transaction of stream0 was expanded with 5 seconds delay after the update and before commit after it committed 100

transactions. Since only one update transaction can execute at any one time, the delay should guarantee that the active update transaction is "in-flight" at the time of the failure.

The following steps were performed for the durability test:

1. The consistency of the ORDERS and LINEITEM tables was verified.
2. 400 transactions for each of the 15 execution streams were prepared.
3. After that at least 100 ACID transactions were submitted from each of the 15 execution streams.
4. A durability failure was induced (see details for each failure below).
5. After restoration of the system the consistency of the ORDERS and LINEITEM tables was re-verified.
6. The durability success files and the HISTORY table were compared.

All durability tests were performed on an 8-node cluster.

3.5.1 Permanent Unrecoverable Failure of Any Durable Medium

Guarantee the database and committed updates are preserved across a permanent irrecoverable failure of any single durable medium containing TPC-H database tables or recovery log tables.

During the durability test, one disk was removed. The test continued uninterrupted, because of the RAID protection (see also section 1.3).

Upon replacement/re-insert of the drive, the data files were rebuild to a consistent state by the RAID controller.

3.5.2 System Crash

Guarantee the database and committed updates are preserved across an instantaneous interruption (system crash/system hang) in processing which requires the system to reboot to recover.

The system crash and memory failure tests were combined. Two system crashes were performed by turning off the power during the durability test: one test for only one node and the other test for the whole cluster.

When power was restored, in both cases the system rebooted automatically and the database was restarted manually.

3.5.3 Memory Failure

Guarantee the database and committed updates are preserved across failure of all or part of memory (loss of contents). See the previous section.

The system crash and memory failure tests were combined as explained in section 3.5.2.

3.5.4 Node or Controller Failure

Guarantee the database and committed updates are preserved across failure of the controller or the whole node.

During that durability test, one server was turned off and both disks were replaced by empty disks. The node was started again and the database was restarted manually.

4 Clause 4: Scaling and Database Population

4.1 Ending Cardinality of Tables

The cardinality (e.g., the number of rows) of each table of the test database, as it existed at the completion of the database load (see clause 4.2.5) must be disclosed.

The following table lists the TPC Benchmark H defined tables and the row count for each table as they existed upon completion of the build.

Table	Rows
Lineitem	600,037,902
Order	150,000,000
Partsupp	80,000,000
Part	20,000,000
Customer	15,000,000
Supplier	1,000,000
Nation	25
Region	5

4.2 Distribution of Tables and Logs Across Media

The distribution of tables and logs across all media must be explicitly described for the tested and priced systems.

Each server contains 2 physical disks that are configured as a mirrored pair at the controller level (HW RAID 1).

The resulting device is divided into 3 partitions. All benchmark- and database-relevant data is stored in partition Data (Tables, Indexes, Temp, Logs, Flat Files).

Partition	Size
System	49 GB
Swap	2 GB
Data	499 GB

4.3 Mapping of Database Partitions/Replication

The mapping of database partitions/replications must be explicitly described.

Horizontal partitioning is used. The data is automatically distributed on the cluster nodes using a hash algorithm. The columns used for the hashing are controlled by DDL statements (see Supporting Files Archive).

The data files are mirrored across the cluster nodes to achieve redundancy for the purpose of recovery only.

4.4 Implementation of RAID

Implementations may use some form of RAID to ensure high availability. If used for data, auxiliary storage (e.g. indexes) or temporary space, the level of RAID must be disclosed for each device.

Please refer to chapter 5.2.

4.5 DBGEN Modifications

The version number, release number, modification number, and patch level of DBGEN must be disclosed. Any modifications to the DBGEN (see Clause 4.2.1) source code must be disclosed. In the event that a program other than DBGEN was used to populate the database, it must be disclosed in its entirety.

The supplied DBGEN version 2.14.0 was modified (changes made to a header file) to generate the database population for this benchmark. This header file change is included in the supporting files archive.

4.6 Data Base Load Time

The database load time for the test database (see Clause 4.3) must be disclosed.

See Numerical Quantities Summary in the Executive Summary.

4.7 Data Storage Ratio

The data storage ratio must be disclosed. It is computed by dividing the total data storage of the priced configuration (expressed in GB) by the size chosen for the test database as defined in 4.1.3.1. The ratio must be reported to the nearest 1/100th, rounded up.

Disk Type	GB per disk*	# of disks	Total (GB)**
Internal	600 GB	4	2,235

Scale Factor	Data Storage Ratio
100	22.35

* Disk manufacturer definition of 1 GB is 10^9 bytes

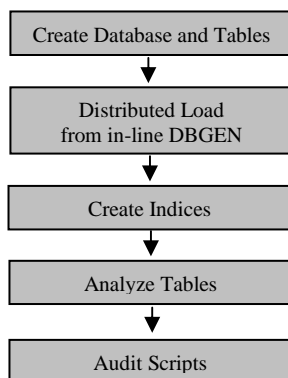
** In this calculation 1 GB is defined as 2^{30} bytes

4.8 Database Load Mechanism Details and Illustration

The details of the database load must be disclosed, including a block diagram illustrating the overall process. Disclosure of the load procedure includes all steps, scripts, input and configuration files required to completely reproduce the test and qualification databases.

The database was loaded using data generation stored on the flat files all on the tested and priced configuration. DBGEN was used to create the flat files.

The following block diagram describes the process used to load the database.



4.9 Qualification Database Configuration

Any differences between the configuration of the qualification database and the test database must be disclosed.

The qualification database used identical scripts to create and load the data with changes to adjust for the database scale factor.

4.10 Memory to Database Size Percentage

The memory to database size percentage must be disclosed. It is computed by multiplying by 100 the total memory size priced on the SUT (see clause 6.2.1) and dividing this number by the size chosen for the test database as defined in Clause 4.1.3.1.

Nodes	RAM per node	Total memory	Scale factor	Memory to Database size percentage
2	24 GB	48 GB	100	48.0%

5 Clause 5: Performance Metrics and Execution Rules Related Items

5.1 System Activity between Load and Performance Tests

Any system activity on the SUT that takes place between the conclusion of the load test and the beginning of the performance test must be fully disclosed.

There is no activity on the SUT between the conclusion of the load test and the beginning of the performance test.

5.2 Steps in the Power Test

The details of the steps followed to implement the power test (e.g., system boot, database restart, etc.) must be disclosed.

The following steps were used to implement the power test:

1. RF1 refresh function from update stream
2. Stream 0 execution from query stream
3. RF2 refresh function from same update stream

5.3 Timing Interval for Each Query and Refresh Functions

The timing intervals (see Clause 5.3.6) for each query of the measured set for both refresh functions must be reported for the power test.

See Numerical Quantities Summary in the Executive Summary.

5.4 Number of Streams for the Throughput Test

The number of execution streams used for the throughput test must be disclosed.

See Numerical Quantities Summary in the Executive Summary.

5.5 Start and End Date/Time of Each Query Stream

The start time and finish time for each query stream must be reported for the throughput test.

See Numerical Quantities Summary in the Executive Summary.

5.6 Total Elapsed Time of the Measurement Interval

The total elapsed time of the measurement interval (see Clause 5.3.5) must be reported for the throughput test.

See Numerical Quantities Summary in the Executive Summary.

5.7 Refresh Function Start Date/Time and Finish Date/Time

Start and finish time for each update function in the update stream must be reported for the throughput test.

See Numerical Quantities Summary in the Executive Summary.

5.8 Timing Intervals for Each Query and Each Refresh Function for Each Stream

The timing intervals (see Clause 5.3.6) for each query of each stream and for each refresh function must be reported for the throughput test.

See Numerical Quantities Summary in the Executive Summary.

5.9 Performance Metrics

The computed performance metric, related numerical quantities and price performance metric must be reported.

See Numerical Quantities Summary in the Executive Summary.

5.10 The Performance Metric and Numerical Quantities from Both Runs

A description of the method used to determine the reproducibility of the measurement results must be reported. This must include the performance metrics (Q_{ppH} and Q_{thH}) from reproducibility runs.

Run ID	$Q_{ppH}@100GB$	$Q_{ptH}@100GB$	$Q_{phH}@100GB$
Run 1	365,901.9	398,212.3	381,715.4
Run 2	362,922.5	391,648.4	377,012.0
% Difference	0.82 %	1.68 %	1,25 %

5.11 System Activity between Performance Tests

Any activity on the SUT that takes place between the conclusion of Run 1 and the beginning of Run 2 must be disclosed.

There was no system activity between Run 1 and Run 2.

6 Clause 6: SUT and Driver Implementation Related Items

6.1 Driver

A detailed description of how the driver performs its functions must be supplied, including any related source code or scripts. This description should allow an independent reconstruction of the driver.

All stream executions are performed by a script. QGEN is used to produce query text.

For each power-test run:

1. A shell script is started, executes RF1 and then waits for the query stream to complete.
2. A shell script is started, executes the 22 queries in the required order for stream 0 and then signals to the shell script started in step 1.
3. The shell script started in step 1 is released and executes RF2.

For each throughput-test run:

1. The queries as generated by QGEN are submitted in the order defined by Clause 5.3.5.4 from the driver in several streams (the number of streams is listed in the Numerical Quantities).
2. In parallel with the queries, pairs of RF1/RF2 are executed sequentially in one update stream.

The source code of the used scripts are disclosed in the Supporting Files Archive.

6.2 Implementation Specific Layer (ISL)

If an implementation specific layer is used, then a detailed description of how it performs its functions must be supplied, including any related source code or scripts. This description should allow an independent reconstruction of the implementation-specific layer.

The scripts used to implement the ISL are disclosed in the Supporting Files Archive.

6.3 Profile-Directed Optimization

If profile-directed optimization as described in Clause 5.2.9 is used, such use must be disclosed.

Profile-directed optimization was not used.

7 Clause 7: Pricing

7.1 Hardware and Software Used in the Priced System

A detailed list of hardware and software used in the priced system must be reported. Each item must have vendor part number, description, and release/revision level, and either general availability status or committed delivery date. If package-pricing is used, contents of the package must be disclosed. Pricing source(s) and effective date(s) of price(s) must also be reported.

A detailed list of hardware and software used in the priced system is included in the pricing sheet in the executive summary. All prices are currently effective. Third-party price quotations are included in Appendix A.

7.2 Total Three Year Price

The total 3-year price of the entire configuration must be reported including: hardware, software, and maintenance charges. Separate component pricing is recommended. The basis of all discounts used must be disclosed.

A detailed pricing sheet of all the hardware and software used in this configuration and the 3-year maintenance costs, demonstrating the computation of the total 3-year price of the configuration, is included in the executive summary at the beginning of this document.

EXASolution is licensed by the amount of main memory allocated to the database software (DB RAM size). This is independent of the physical RAM per node and the number of nodes. The database data doesn't need to fit into the licensed memory, although best performance can be reached in that case. Due to compression, this can be achieved with much less DB RAM size than raw data size.

7.3 Availability Date

The committed delivery date for general availability of products used in the priced calculations must be reported. When the priced system includes products with different availability dates, the availability date reported on the executive summary must be the date by which all components are committed to being available. The full disclosure report must report availability dates individually for at least each of the categories for which a pricing subtotal must be provided.

Component	Availability Date
Cluster Hardware	Now (date of publication)
EXASolution 4.0	October 01, 2011

8 Clause 8: Full Disclosure

8.1 Supporting Files Index Table

An index for all files and/or directories included in the Supporting Files Archive as required by Clauses 8.3.2 through 8.3.8 must be provided in the report.

Clause	Description	Pathname
1	OS and DB Parameters	SupportingFiles/TPCH/settings.txt
	DB Creation scripts	SupportingFiles/TPCH/sql/create_user.sql SupportingFiles/TPCH/sql/create_schema.sql SupportingFiles/TPCH/sql/create_indices.sql
2	Query validation text	SupportingFiles/TPCH/scripts/tpc_h_run_validation.sh SupportingFiles/TPCH/sql/validation.sql
	Refresh function details	SupportingFiles/TPCH/scripts/tpc_h_run_full.sh
3	ACID Test Scripts	SupportingFiles/TPCH/ACID/
	ACID Test Results	SupportingFiles/TPCH/ACID_output/
4	DBGEN Modifications	SupportingFiles/TPCH/tpch_archives/tpch*.patch
	Database Load Details	SupportingFiles/TPCH/scripts/load_init.sh
5	Execution log	SupportingFiles/TPCH/result/run1/ SupportingFiles/TPCH/result/run2/
	Query validation output	SupportingFiles/TPCH/result/validation/
6	Implementation scripts	SupportingFiles/TPCH/scripts/

9 Clause 9: Audit Related Items

9.1 Auditor's Report

The auditor's agency name, address, phone number, and Attestation letter with a brief audit summary report indicating compliance must be included in the full disclosure report. A statement should be included specifying who to contact in order to obtain further information regarding the audit process.

This implementation of the TPC Benchmark H was audited by Francois Raab of InfoSizing, a certified TPC-H auditor. Further information regarding the audit process may be obtained from:

Francois Raab

InfoSizing, Inc.

125 West Monroe Street

Colorado Springs, CO 80907

Phone: (719) 473-7555

Fax: (719) 473-7554

Email: francois@sizing.com

TPC Benchmark H Full Disclosure Report and other information can be downloaded from the Transaction Processing Performance Council website at www.tpc.org

Benchmark Sponsor: David J. Morse
 Primary TPC Representative
 Dell
 Round Rock, Texas
 United States

April 02, 2011

I verified the TPC Benchmark™ H performance of the following configuration:

Platform: **Dell PowerEdge R710, 2-node Cluster**
 Database Manager: **EXASolution 4.0**
 Operating System: **EXACluster OS 4.0**

The results were:

CPU (Speed)	Memory	Disks	QphH@100GB
Dell PowerEdge R710, 2-node cluster (each node with)			
2 x Intel Xeon X5690 Quad (3.46GHz)	24GB Main	2 x 600GB SAS	377,012.0

In my opinion, this performance result was produced in compliance with the TPC's requirements for the benchmark. The following verification items were given special attention:

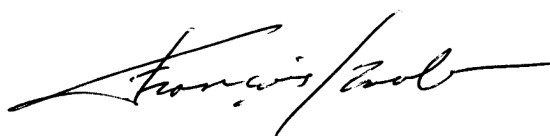
- The database records were defined with the proper layout and size
- The database population was generated using DBGEN
- The database was properly scaled to 100GB and populated accordingly
- The compliance of the database auxiliary data structures was verified
- The database load time was correctly measured and reported
- The required ACID properties were verified and met

- The query input variables were generated by QGEN
- The query text was produced using minor modifications and one query variant
- The execution of the queries against the SF1 database produced compliant answers
- A compliant implementation specific layer was used to drive the tests
- The throughput tests involved 9 query streams
- The ratio between the longest and the shortest query was such that no query timing was adjusted
- The execution times for queries and refresh functions were correctly measured and reported
- The repeatability of the measured results was verified
- The system pricing was verified for major components and maintenance
- The major pages from the FDR were verified for accuracy

Additional Audit Notes:

DBGEN version 2.14.0 was modified (changes made to a header file) to add an EXASolution option. This change complies with the requirements for the benchmark. A description of this change is included in the supporting files provided with the Full Disclosure Report.

Respectfully Yours,



François Raab
President

Appendix A: Pricing Information

EXASOL AG
Neumeyerstrasse 48
D-90411 Nürnberg
T +49 911 23991 0
F +49 911 23991 5241



March 21, 2011

Dell, Inc.
One Dell Way
Round Rock, TX 78682
United States

Product	Part Number	Price per GB	Quantity	Extended Price
EXASolution 4.0 (1GB DB RAM*) (EXACluster OS 4.0 included)	EXA-1G	\$ 1,560	32	\$49,920
Support 24x7 (4% per year)	EXA-SUP			\$5,990
Total				\$55,910

*license size doesn't depend on the physical main memory, but the amount of memory allocated to EXASolution

This quote is valid for 60 days.

EXASOL Pricing Contact:
Steffen Weissbarth
sales@exasol.com