



TPC Benchmark™ H  
Full Disclosure Report

---

SPARC Enterprise M9000

*Using*

*Oracle Database 11g Release 2 Enterprise Edition  
with Partitioning*

***Submitted for Review***

***March 22, 2011***

***First Revision***

***September 14, 2011***

---

First Printing     March 22, 2011

Second Printing   September 14, 2011

Copyright © 2011 Oracle and/or its affiliates. All rights reserved.

Oracle, the Sponsor of this benchmark test, believes that the information in this document is accurate as of the publication date. The information in this document is subject to change without notice. The sponsor assumes no responsibility for any errors that may appear in this document.

The pricing information in this document is believed to accurately reflect the current prices as of the publication date. However, the Sponsor provides no warranty of the pricing information in this document.

The performance information in this document is for guidance only. System performance is highly dependent on many factors including system hardware, system and user software, and user application characteristics; relative system performance may vary significantly as a result of these and other factors. The Sponsor does not warrant or represent that a user can or will achieve similar performance. No warranty on system performance or price/performance is expressed or implied in this document.

Oracle and Java are registered trademarks of Oracle and/or its affiliates. Other names may be trademarks of their respective owners.

AMD, Opteron, the AMD logo, and the AMD Opteron logo are trademarks or registered trademarks of Advanced Micro Devices. Intel and Intel Xeon are trademarks or registered trademarks of Intel Corporation. All SPARC trademarks are used under license and are trademarks or registered trademarks of SPARC International, Inc. UNIX is a registered trademark licensed through X/Open Company, Ltd.

All rights reserved. This product and related documentation are protected by copyright and distributed under licenses restricting its use, copying, distribution, and decompilation. No part of this product or related documentation may be reproduced in any form by any means without prior written authorization of Sun and its licensors, if any.

RESTRICTED RIGHTS LEGEND: Use, duplication, or disclosure by the United States Government is subject to the restrictions set forth in DFARS 252.227-7013 (c)(1)(ii) and FAR 52.227-19, Rights in Technical Data and Computer Software (October 1988).

The product described in this manual may be protected by one or more U.S. patents, foreign patents, or pending applications.

THIS PUBLICATION IS PROVIDED #AS IS# WITHOUT WARRANTY OF ANY KIND, EITHER EXPRESS OR IMPLIED, INCLUDING, BUT NOT LIMITED TO, THE IMPLIED WARRANTIES OF MERCHANTABILITY, FITNESS FOR A PARTICULAR PURPOSE, OR NON-INFRINGEMENT.

THIS PUBLICATION COULD INCLUDE TECHNICAL INACCURACIES OR TYPOGRAPHICAL ERRORS. CHANGES ARE PERIODICALLY ADDED TO THE INFORMATION HEREIN; THESE CHANGES WILL BE INCORPORATED IN NEW EDITIONS OF THE PUBLICATION. SUN MICROSYSTEMS, INC. MAY MAKE IMPROVEMENTS AND/OR CHANGES IN THE PRODUCT(S) AND/OR THE PROGRAM(S) DESCRIBED IN THIS PUBLICATION AT ANY TIME.

---



# SPARC Enterprise M9000 Server with Oracle Database 11g Release 2

TPC-H Rev. 2.14.0  
TPC-Pricing 1.6.0

Report Date: March 22, 2011  
Revised: September 14, 2011

Total System Cost

**\$7,030,009 USD**

Composite Query per Hour Metric

**386,478.3 QphH@3000GB**

Price / Performance

**\$18.19/QphH@3000GB**

Database Size

3000GB

Database Manager

Oracle Database 11g Release 2  
Enterprise Edition with  
Partitioning

Operating System

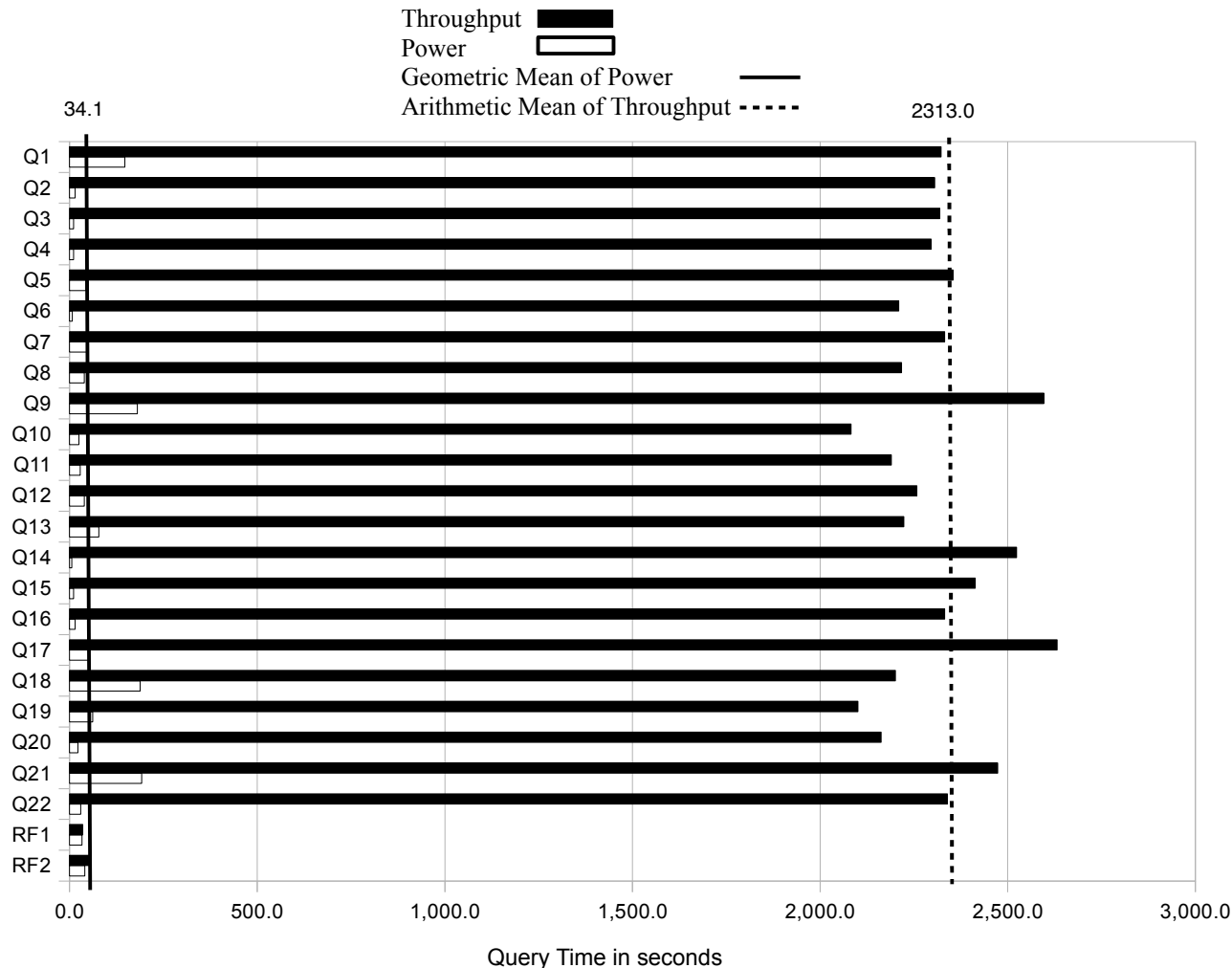
Solaris 10 9/10

Other Software

None

Availability Date

September 22, 2011



Database Load Time = 2:59:01

Load Includes Backup: N

Total Data Storage / Database Size = 102.9

Memory to Database Size Percentage = 34.1

Storage Redundancy Levels:

Base Tables: Level Three

Auxiliary Data Structures: Level Three

DBMS Temporary Space: Level Zero

OS and DBMS Software: Level One

System Configuration:

Processors:

Memory:

Disks:

Total Storage:

SPARC Enterprise M9000 Server

64 SPARC64 VII+ 3000 MHz Processors, 256 cores, 256 threads  
1024GB

32 Sun Storage 6180 Arrays w/ 16 600GB 15K RPM disks each

4 300GB 10K SAS Internal

308,800GB (GB = 1024\*1024\*1024 bytes)



# SPARC Enterprise M9000 Server with Oracle Database 11g Release 2

TPC-H Rev. 2.14.0  
TPC-Pricing 1.6.0

Report Date: March 22, 2011  
Revised: September 14, 2011

Description	Part Number	Source	Unit Price	Qty	Ext. Price	3 Yr. Maint.
<b>Server Hardware</b>						
Sun SE M9000-64 Base 1ph	SEJASY12Z	1	1,523,087	1	1,523,087	
SE_CMU:4*SPARCVII+ 3.0w/64GB	SEMY4KE1Z	1	200,192	16	3,203,072	
SE_PCI_E IO Unit: 8*slots	7101643	1	59,520	16	952,320	
PWR Cord 1PHs M8000-9000 USA	SEMX9P31Z-N	1	3,039	10	30,390	
PCI-E Base IO Card	SEMY7BS1Z-N	1	3,840	2	7,680	
300GB 10K RPM 2.5" SAS Disk	SEMX3C11Z-N	1S	1,481	4	5,924	
8GB PCIe FC Dual Host Bus Adapter, qlogic	SG-XPCIE2FC-QF8-Z-N	1	2,399	64	153,536	
Sun Fire X4170 M2 Server	X4170M2-H1-AA	1	2,699	1	2,699	
Oracle Solaris 10 Pre-Install	5894A-N	1	0	1	0	
US PC Peripheral Kit (Keyboard/Mouse)	3701A-PC	1	50	1	50	
Express Slide Rail Kit	6326A-N	1	150	1	150	
4GB (1x4GB) DDR3-1333	4910A	1	255	2	510	
6 Gb/s SAS HBA, Internal ATO	SG-SAS6-INT-Z	1	419	1	419	
300GB 10K RPM 2.5" SAS Disk	RB-SS2CF-300G10K-N	1	689	1	689	
DVD+/-RW SATA-based drive ATO	8325A-N	1	145	1	145	
1 x Intel Xeon E5620 ATO	5924A	1	599	1	599	
X4170 CPU Heatsink, XATO	5879A-N	1	0	1	0	
17" TFT Monitor	X7204A-N	1	219	1	219	
<b>Server Hardware Subtotal</b>					<b>5,881,489</b>	<b>0</b>
<b>Storage</b>						
Sun Storage 6180 4GB cache 4 FC ports	TB6180R11A2-0-N	1	19,595	32	627,040	
Storage 6XXX 600GB15K FC-HDD	XTC-FC1CF600G15K-N	1	4,695	512	2,403,840	
Sun Storage 6180 Rack Rail Kit	XTA6000-RK2-RAIL	1	175	32	5,600	
Jumper Cable Kit: 1 x 1m C13	XSR-JUMP-1MC13	1	29	64	1,856	
15M Fibre Channel Cable	X9734A-Z-N	1	105	64	6,720	
Sun Rack II 42U	XSR-1242E	1	2,849	3	8,547	
PDU 15kVA, Single Phase, LV	XSR-15K-L630	1	1,200	6	7,200	
<b>Storage Subtotal</b>					<b>3,060,803</b>	<b>0</b>
<b>Server Software</b>						
Oracle Solaris 10 9/10 Pre-install	SOLZS-10M9A9S-FI-N	1	0	1	0	
Oracle Solaris Studio 12		1	0	1	0	
Oracle Solaris Studio 12 Support, Named User	B59320	1	1,200	3		3,600
Oracle Database 11g Release 2 Enterprise Edition, Named User Plus for 3 years (for 128 processors)		1	11,875	128	1,520,000	
Partitioning, Named User Plus for 3 years (for 128 processors)		1	2,875	128	368,000	
Incident Server Support for 3 years		1	2,300	3		6,900
<b>Server Software Subtotal</b>					<b>1,888,000</b>	<b>10,500</b>
Oracle Premier Hardware Support	Q-PREM-SPRT-SYS	1	1,073,075	3		3,219,225
<b>Total</b>					<b>10,830,292</b>	<b>3,229,725</b>
Total Oracle Software, Hardware and Maintenance Discount		1			(7,030,009)	
<b>Notes (Source):</b>					<b>3 Yr. Cost</b>	<b>\$7,030,009</b>
1. Oracle Corp.			<b>QphH @3000GB</b>		<b>386,478.3</b>	
S. Substituted Component			<b>S/QphH @3000GB</b>		<b>\$18.19</b>	

## Audited by Francois Raab of InfoSizing, Inc.

Oracle's discounts are based upon US list prices and for similar quantities and configurations. A discount of 50% has been applied to all Oracle hardware, software and services based on the total value and quantities of the components of the configuration, including full payment of all components and maintenance.

Prices used in TPC Benchmarks reflect the actual prices a customer would pay for a one-time purchase of the stated components. Individually negotiated discounts are not permitted. Special prices based on assumptions about past or future purchases are not permitted. All discounts reflect standard pricing policies for the listed components. For complete details, see the pricing section of the TPC benchmark specifications. If you find that stated prices are not available according to these terms, please inform the TPC at [pricing@tpc.org](mailto:pricing@tpc.org). Thank you.



# SPARC Enterprise M9000 Server with Oracle Database 11g Release 2

TPC-H Rev. 2.14.0  
TPC-Pricing 1.6.0

Report Date: March 22, 2011  
Revised: September 14, 2011

## Numerical Quantities

### Measurement Results:

Database Scale Factor	= 3000GB
Total Data Storage / Database Size	= 102.9
Start of database load time	= 02-13-2011 14:37:57
End of database load time	= 02-13-2011 17:36:58
Database Load Time	= 2:59:01
Query Streams for Throughput Test	= 128
TPC-H Power	= 316,835.8
TPC-H Throughput	= 471,428.6
TPC-H Composite Query-per-Hour Rating (QphH@3000GB)	= 386,478.3
Total System Price Over 3 Years	= \$7,030,009
TPC-H Price/Performance Metric (\$/QphH@3000GB)	= \$18.19

### Measurement Intervals:

Measurement Interval in Throughput Test (Ts)	= 64,512 seconds
--	------------------

### Duration of Stream Execution:

Power Run	Seed	RF1 Start RF1 End	Query Start Query End	RF2 Start RF2 End	Duration
	0213173658	02/14/2011 11:12:56	02/14/2011 11:13:29	02/14/2011 11:34:19	00:22:04
		02/14/2011 11:13:29	02/14/2011 11:34:19	02/14/2011 11:35:00	

Throughput Stream	Seed	Query Start Query End	Duration	RF1 Start RF1 End	RF2 Start RF2 End
1	0213173659	02/14/2011 11:35:11	13:42:38	02/15/2011 02:20:58	02/15/2011 02:21:34
		02/15/2011 01:17:50		02/15/2011 02:21:34	02/15/2011 02:22:21
2	0213173660	02/14/2011 11:35:12	13:40:51	02/15/2011 02:22:21	02/15/2011 02:22:59
		02/15/2011 01:16:02		02/15/2011 02:22:59	02/15/2011 02:23:54
3	0213173661	02/14/2011 11:35:12	13:40:21	02/15/2011 02:23:54	02/15/2011 02:24:29
		02/15/2011 01:15:32		02/15/2011 02:24:29	02/15/2011 02:25:26
4	0213173662	02/14/2011 11:35:12	13:42:26	02/15/2011 02:25:26	02/15/2011 02:26:08
		02/15/2011 01:17:38		02/15/2011 02:26:08	02/15/2011 02:26:59
5	0213173663	02/14/2011 11:35:12	13:42:38	02/15/2011 02:26:59	02/15/2011 02:27:36
		02/15/2011 01:17:50		02/15/2011 02:27:36	02/15/2011 02:28:28
6	0213173664	02/14/2011 11:35:12	13:39:46	02/15/2011 02:28:28	02/15/2011 02:29:03
		02/15/2011 01:14:58		02/15/2011 02:29:03	02/15/2011 02:29:56
7	0213173665	02/14/2011 11:35:12	13:59:57	02/15/2011 02:29:56	02/15/2011 02:30:34
		02/15/2011 01:35:09		02/15/2011 02:30:34	02/15/2011 02:31:31
8	0213173666	02/14/2011 11:35:12	13:42:38	02/15/2011 02:31:31	02/15/2011 02:32:05
		02/15/2011 01:17:50		02/15/2011 02:32:05	02/15/2011 02:33:01
9	0213173667	02/14/2011 11:35:12	13:40:23	02/15/2011 02:33:01	02/15/2011 02:33:39
		02/15/2011 01:15:35		02/15/2011 02:33:39	02/15/2011 02:34:31
10	0213173668	02/14/2011 11:35:12	13:42:23	02/15/2011 02:34:31	02/15/2011 02:35:05
		02/15/2011 01:17:35		02/15/2011 02:35:05	02/15/2011 02:35:56

Throughput Stream	Seed	Query Start Query End	Duration	RF1 Start RF1 End	RF2 Start RF2 End
11	0213173669	02/14/2011 11:35:12	13:40:50	02/15/2011 02:35:56	02/15/2011 02:36:30
		02/15/2011 01:16:02		02/15/2011 02:36:30	02/15/2011 02:37:24
12	0213173670	02/14/2011 11:35:12	13:42:23	02/15/2011 02:37:24	02/15/2011 02:37:59
		02/15/2011 01:17:35		02/15/2011 02:37:59	02/15/2011 02:38:54
13	0213173671	02/14/2011 11:35:12	13:45:39	02/15/2011 02:38:54	02/15/2011 02:39:33
		02/15/2011 01:20:51		02/15/2011 02:39:33	02/15/2011 02:40:26
14	0213173672	02/14/2011 11:35:12	13:42:38	02/15/2011 02:40:26	02/15/2011 02:41:04
		02/15/2011 01:17:50		02/15/2011 02:41:04	02/15/2011 02:41:58
15	0213173673	02/14/2011 11:35:12	13:42:23	02/15/2011 02:41:58	02/15/2011 02:42:35
		02/15/2011 01:17:35		02/15/2011 02:42:35	02/15/2011 02:43:24
16	0213173674	02/14/2011 11:35:12	13:44:46	02/15/2011 02:43:24	02/15/2011 02:44:02
		02/15/2011 01:19:58		02/15/2011 02:44:02	02/15/2011 02:44:58
17	0213173675	02/14/2011 11:35:12	13:45:20	02/15/2011 02:44:58	02/15/2011 02:45:31
		02/15/2011 01:20:33		02/15/2011 02:45:31	02/15/2011 02:46:26
18	0213173676	02/14/2011 11:35:12	13:43:29	02/15/2011 02:46:26	02/15/2011 02:47:00
		02/15/2011 01:18:42		02/15/2011 02:47:00	02/15/2011 02:47:50
19	0213173677	02/14/2011 11:35:12	13:43:16	02/15/2011 02:47:50	02/15/2011 02:48:24
		02/15/2011 01:18:29		02/15/2011 02:48:24	02/15/2011 02:49:14
20	0213173678	02/14/2011 11:35:12	13:47:03	02/15/2011 02:49:14	02/15/2011 02:49:54
		02/15/2011 01:22:16		02/15/2011 02:49:54	02/15/2011 02:50:47
21	0213173679	02/14/2011 11:35:12	13:43:17	02/15/2011 02:50:48	02/15/2011 02:51:22
		02/15/2011 01:18:29		02/15/2011 02:51:22	02/15/2011 02:52:11
22	0213173680	02/14/2011 11:35:13	13:55:22	02/15/2011 02:52:11	02/15/2011 02:52:44
		02/15/2011 01:30:35		02/15/2011 02:52:44	02/15/2011 02:53:39
23	0213173681	02/14/2011 11:35:13	13:43:29	02/15/2011 02:53:39	02/15/2011 02:54:16
		02/15/2011 01:18:41		02/15/2011 02:54:16	02/15/2011 02:55:08
24	0213173682	02/14/2011 11:35:13	13:53:51	02/15/2011 02:55:08	02/15/2011 02:55:46
		02/15/2011 01:29:04		02/15/2011 02:55:46	02/15/2011 02:56:41
25	0213173683	02/14/2011 11:35:13	13:50:43	02/15/2011 02:56:42	02/15/2011 02:57:19
		02/15/2011 01:25:56		02/15/2011 02:57:19	02/15/2011 02:58:09
26	0213173684	02/14/2011 11:35:13	13:44:46	02/15/2011 02:58:09	02/15/2011 02:58:45
		02/15/2011 01:19:59		02/15/2011 02:58:45	02/15/2011 02:59:35
27	0213173685	02/14/2011 11:35:13	13:45:42	02/15/2011 02:59:35	02/15/2011 03:00:12
		02/15/2011 01:20:55		02/15/2011 03:00:12	02/15/2011 03:01:07
28	0213173686	02/14/2011 11:35:13	13:45:12	02/15/2011 03:01:07	02/15/2011 03:01:41
		02/15/2011 01:20:25		02/15/2011 03:01:40	02/15/2011 03:02:31
29	0213173687	02/14/2011 11:35:13	13:55:11	02/15/2011 03:02:31	02/15/2011 03:03:03
		02/15/2011 01:30:23		02/15/2011 03:03:03	02/15/2011 03:03:54
30	0213173688	02/14/2011 11:35:13	13:55:53	02/15/2011 03:03:55	02/15/2011 03:04:27
		02/15/2011 01:31:06		02/15/2011 03:04:27	02/15/2011 03:05:20
31	0213173689	02/14/2011 11:35:13	13:56:39	02/15/2011 03:05:20	02/15/2011 03:05:56
		02/15/2011 01:31:52		02/15/2011 03:05:56	02/15/2011 03:06:53
32	0213173690	02/14/2011 11:35:13	13:55:34	02/15/2011 03:06:53	02/15/2011 03:07:27
		02/15/2011 01:30:47		02/15/2011 03:07:27	02/15/2011 03:08:19
33	0213173691	02/14/2011 11:35:13	13:50:46	02/15/2011 03:08:19	02/15/2011 03:08:52
		02/15/2011 01:25:59		02/15/2011 03:08:52	02/15/2011 03:09:48
34	0213173692	02/14/2011 11:35:13	13:55:45	02/15/2011 03:09:48	02/15/2011 03:10:24
		02/15/2011 01:30:58		02/15/2011 03:10:24	02/15/2011 03:11:23
35	0213173693	02/14/2011 11:35:13	13:54:33	02/15/2011 03:11:23	02/15/2011 03:11:57
		02/15/2011 01:29:46		02/15/2011 03:11:57	02/15/2011 03:12:54
36	0213173694	02/14/2011 11:35:13	13:55:37	02/15/2011 03:12:54	02/15/2011 03:13:33

Throughput Stream	Seed	Query Start Query End	Duration	RF1 Start RF1 End	RF2 Start RF2 End
		02/15/2011 01:30:50		02/15/2011 03:13:33	02/15/2011 03:14:22
37	0213173695	02/14/2011 11:35:13	13:55:01	02/15/2011 03:14:22	02/15/2011 03:15:02
		02/15/2011 01:30:14		02/15/2011 03:15:02	02/15/2011 03:15:57
38	0213173696	02/14/2011 11:35:13	14:02:05	02/15/2011 03:15:58	02/15/2011 03:16:34
		02/15/2011 01:37:18		02/15/2011 03:16:34	02/15/2011 03:17:27
39	0213173697	02/14/2011 11:35:13	14:01:29	02/15/2011 03:17:27	02/15/2011 03:18:08
		02/15/2011 01:36:43		02/15/2011 03:18:08	02/15/2011 03:19:04
40	0213173698	02/14/2011 11:35:14	13:53:13	02/15/2011 03:19:04	02/15/2011 03:19:41
		02/15/2011 01:28:27		02/15/2011 03:19:41	02/15/2011 03:20:38
41	0213173699	02/14/2011 11:35:14	13:53:15	02/15/2011 03:20:38	02/15/2011 03:21:15
		02/15/2011 01:28:29		02/15/2011 03:21:15	02/15/2011 03:22:06
42	0213173700	02/14/2011 11:35:14	14:08:50	02/15/2011 03:22:07	02/15/2011 03:22:41
		02/15/2011 01:44:03		02/15/2011 03:22:41	02/15/2011 03:23:28
43	0213173701	02/14/2011 11:35:14	13:54:33	02/15/2011 03:23:28	02/15/2011 03:24:07
		02/15/2011 01:29:46		02/15/2011 03:24:07	02/15/2011 03:25:03
44	0213173702	02/14/2011 11:35:14	13:45:12	02/15/2011 03:25:03	02/15/2011 03:25:36
		02/15/2011 01:20:25		02/15/2011 03:25:36	02/15/2011 03:26:33
45	0213173703	02/14/2011 11:35:14	13:47:46	02/15/2011 03:26:33	02/15/2011 03:27:07
		02/15/2011 01:22:59		02/15/2011 03:27:07	02/15/2011 03:28:02
46	0213173704	02/14/2011 11:35:14	14:06:56	02/15/2011 03:28:02	02/15/2011 03:28:38
		02/15/2011 01:42:10		02/15/2011 03:28:38	02/15/2011 03:29:30
47	0213173705	02/14/2011 11:35:14	14:08:12	02/15/2011 03:29:30	02/15/2011 03:30:04
		02/15/2011 01:43:26		02/15/2011 03:30:04	02/15/2011 03:31:00
48	0213173706	02/14/2011 11:35:14	14:06:33	02/15/2011 03:31:00	02/15/2011 03:31:33
		02/15/2011 01:41:47		02/15/2011 03:31:33	02/15/2011 03:32:27
49	0213173707	02/14/2011 11:35:14	13:58:52	02/15/2011 03:32:27	02/15/2011 03:33:00
		02/15/2011 01:34:06		02/15/2011 03:33:00	02/15/2011 03:33:54
50	0213173708	02/14/2011 11:35:14	13:56:10	02/15/2011 03:33:54	02/15/2011 03:34:27
		02/15/2011 01:31:24		02/15/2011 03:34:27	02/15/2011 03:35:21
51	0213173709	02/14/2011 11:35:14	13:58:02	02/15/2011 03:35:21	02/15/2011 03:35:56
		02/15/2011 01:33:16		02/15/2011 03:35:56	02/15/2011 03:36:49
52	0213173710	02/14/2011 11:35:14	13:43:27	02/15/2011 03:36:49	02/15/2011 03:37:26
		02/15/2011 01:18:41		02/15/2011 03:37:26	02/15/2011 03:38:23
53	0213173711	02/14/2011 11:35:14	13:58:11	02/15/2011 03:38:23	02/15/2011 03:38:59
		02/15/2011 01:33:25		02/15/2011 03:38:59	02/15/2011 03:39:48
54	0213173712	02/14/2011 11:35:14	13:53:19	02/15/2011 03:39:48	02/15/2011 03:40:23
		02/15/2011 01:28:34		02/15/2011 03:40:23	02/15/2011 03:41:14
55	0213173713	02/14/2011 11:35:14	14:06:54	02/15/2011 03:41:14	02/15/2011 03:41:49
		02/15/2011 01:42:08		02/15/2011 03:41:49	02/15/2011 03:42:40
56	0213173714	02/14/2011 11:35:14	13:50:45	02/15/2011 03:42:40	02/15/2011 03:43:19
		02/15/2011 01:25:59		02/15/2011 03:43:19	02/15/2011 03:44:12
57	0213173715	02/14/2011 11:35:14	14:06:54	02/15/2011 03:44:12	02/15/2011 03:44:48
		02/15/2011 01:42:08		02/15/2011 03:44:48	02/15/2011 03:45:40
58	0213173716	02/14/2011 11:35:14	13:57:46	02/15/2011 03:45:40	02/15/2011 03:46:17
		02/15/2011 01:33:01		02/15/2011 03:46:17	02/15/2011 03:47:15
59	0213173717	02/14/2011 11:35:14	14:02:34	02/15/2011 03:47:15	02/15/2011 03:47:50
		02/15/2011 01:37:48		02/15/2011 03:47:50	02/15/2011 03:48:40
60	0213173718	02/14/2011 11:35:14	13:54:32	02/15/2011 03:48:40	02/15/2011 03:49:21
		02/15/2011 01:29:46		02/15/2011 03:49:20	02/15/2011 03:50:15
61	0213173719	02/14/2011 11:35:15	14:04:04	02/15/2011 03:50:15	02/15/2011 03:50:49
		02/15/2011 01:39:18		02/15/2011 03:50:48	02/15/2011 03:51:38

Throughput Stream	Seed	Query Start Query End	Duration	RF1 Start RF1 End	RF2 Start RF2 End
62	0213173720	02/14/2011 11:35:15	14:00:38	02/15/2011 03:51:38	02/15/2011 03:52:11
		02/15/2011 01:35:53		02/15/2011 03:52:11	02/15/2011 03:53:03
63	0213173721	02/14/2011 11:35:15	13:58:00	02/15/2011 03:53:03	02/15/2011 03:53:36
		02/15/2011 01:33:15		02/15/2011 03:53:36	02/15/2011 03:54:23
64	0213173722	02/14/2011 11:35:15	14:08:32	02/15/2011 03:54:23	02/15/2011 03:54:59
		02/15/2011 01:43:47		02/15/2011 03:54:59	02/15/2011 03:55:52
65	0213173723	02/14/2011 11:35:15	14:16:40	02/15/2011 03:55:52	02/15/2011 03:56:25
		02/15/2011 01:51:55		02/15/2011 03:56:25	02/15/2011 03:57:21
66	0213173724	02/14/2011 11:35:15	14:14:04	02/15/2011 03:57:21	02/15/2011 03:57:55
		02/15/2011 01:49:18		02/15/2011 03:57:55	02/15/2011 03:58:48
67	0213173725	02/14/2011 11:35:15	14:13:45	02/15/2011 03:58:48	02/15/2011 03:59:25
		02/15/2011 01:49:00		02/15/2011 03:59:25	02/15/2011 04:00:16
68	0213173726	02/14/2011 11:35:15	14:08:32	02/15/2011 04:00:16	02/15/2011 04:00:53
		02/15/2011 01:43:47		02/15/2011 04:00:53	02/15/2011 04:01:41
69	0213173727	02/14/2011 11:35:15	14:00:23	02/15/2011 04:01:41	02/15/2011 04:02:18
		02/15/2011 01:35:38		02/15/2011 04:02:18	02/15/2011 04:03:12
70	0213173728	02/14/2011 11:35:15	14:09:44	02/15/2011 04:03:12	02/15/2011 04:03:46
		02/15/2011 01:44:59		02/15/2011 04:03:46	02/15/2011 04:04:44
71	0213173729	02/14/2011 11:35:15	14:09:23	02/15/2011 04:04:44	02/15/2011 04:05:19
		02/15/2011 01:44:38		02/15/2011 04:05:19	02/15/2011 04:06:08
72	0213173730	02/14/2011 11:35:15	14:00:55	02/15/2011 04:06:08	02/15/2011 04:06:44
		02/15/2011 01:36:10		02/15/2011 04:06:44	02/15/2011 04:07:38
73	0213173731	02/14/2011 11:35:15	14:10:12	02/15/2011 04:07:38	02/15/2011 04:08:11
		02/15/2011 01:45:27		02/15/2011 04:08:11	02/15/2011 04:09:06
74	0213173732	02/14/2011 11:35:15	14:22:33	02/15/2011 04:09:06	02/15/2011 04:09:39
		02/15/2011 01:57:48		02/15/2011 04:09:39	02/15/2011 04:10:32
75	0213173733	02/14/2011 11:35:15	14:25:45	02/15/2011 04:10:32	02/15/2011 04:11:09
		02/15/2011 02:01:00		02/15/2011 04:11:09	02/15/2011 04:12:00
76	0213173734	02/14/2011 11:35:15	14:06:53	02/15/2011 04:12:00	02/15/2011 04:12:33
		02/15/2011 01:42:08		02/15/2011 04:12:33	02/15/2011 04:13:30
77	0213173735	02/14/2011 11:35:15	14:15:47	02/15/2011 04:13:30	02/15/2011 04:14:02
		02/15/2011 01:51:02		02/15/2011 04:14:02	02/15/2011 04:14:54
78	0213173736	02/14/2011 11:35:15	14:00:40	02/15/2011 04:14:54	02/15/2011 04:15:28
		02/15/2011 01:35:55		02/15/2011 04:15:28	02/15/2011 04:16:18
79	0213173737	02/14/2011 11:35:15	14:09:22	02/15/2011 04:16:18	02/15/2011 04:16:52
		02/15/2011 01:44:38		02/15/2011 04:16:52	02/15/2011 04:17:49
80	0213173738	02/14/2011 11:35:15	14:25:06	02/15/2011 04:17:49	02/15/2011 04:18:23
		02/15/2011 02:00:22		02/15/2011 04:18:23	02/15/2011 04:19:21
81	0213173739	02/14/2011 11:35:16	14:13:03	02/15/2011 04:19:21	02/15/2011 04:19:57
		02/15/2011 01:48:18		02/15/2011 04:19:56	02/15/2011 04:20:56
82	0213173740	02/14/2011 11:35:16	14:27:51	02/15/2011 04:20:56	02/15/2011 04:21:27
		02/15/2011 02:03:07		02/15/2011 04:21:27	02/15/2011 04:22:22
83	0213173741	02/14/2011 11:35:16	14:25:45	02/15/2011 04:22:22	02/15/2011 04:22:57
		02/15/2011 02:01:00		02/15/2011 04:22:56	02/15/2011 04:23:50
84	0213173742	02/14/2011 11:35:16	14:33:28	02/15/2011 04:23:50	02/15/2011 04:24:23
		02/15/2011 02:08:44		02/15/2011 04:24:23	02/15/2011 04:25:18
85	0213173743	02/14/2011 11:35:16	14:24:42	02/15/2011 04:25:18	02/15/2011 04:25:49
		02/15/2011 01:59:58		02/15/2011 04:25:49	02/15/2011 04:26:42
86	0213173744	02/14/2011 11:35:16	14:07:27	02/15/2011 04:26:42	02/15/2011 04:27:16
		02/15/2011 01:42:43		02/15/2011 04:27:16	02/15/2011 04:28:12
87	0213173745	02/14/2011 11:35:16	14:15:01	02/15/2011 04:28:12	02/15/2011 04:28:49



Throughput Stream	Seed	Query Start Query End	Duration	RF1 Start RF1 End	RF2 Start RF2 End
		02/15/2011 01:50:17		02/15/2011 04:28:49	02/15/2011 04:29:39
88	0213173746	02/14/2011 11:35:16	14:24:42	02/15/2011 04:29:39	02/15/2011 04:30:14
		02/15/2011 01:59:58		02/15/2011 04:30:14	02/15/2011 04:31:08
89	0213173747	02/14/2011 11:35:16	14:34:05	02/15/2011 04:31:08	02/15/2011 04:31:48
		02/15/2011 02:09:21		02/15/2011 04:31:48	02/15/2011 04:32:37
90	0213173748	02/14/2011 11:35:16	14:09:40	02/15/2011 04:32:37	02/15/2011 04:33:20
		02/15/2011 01:44:56		02/15/2011 04:33:20	02/15/2011 04:34:13
91	0213173749	02/14/2011 11:35:16	14:24:19	02/15/2011 04:34:13	02/15/2011 04:34:48
		02/15/2011 01:59:35		02/15/2011 04:34:48	02/15/2011 04:35:42
92	0213173750	02/14/2011 11:35:16	14:27:51	02/15/2011 04:35:42	02/15/2011 04:36:17
		02/15/2011 02:03:07		02/15/2011 04:36:17	02/15/2011 04:37:12
93	0213173751	02/14/2011 11:35:16	14:22:25	02/15/2011 04:37:12	02/15/2011 04:37:49
		02/15/2011 01:57:41		02/15/2011 04:37:49	02/15/2011 04:38:44
94	0213173752	02/14/2011 11:35:16	14:10:44	02/15/2011 04:38:44	02/15/2011 04:39:19
		02/15/2011 01:46:00		02/15/2011 04:39:19	02/15/2011 04:40:10
95	0213173753	02/14/2011 11:35:16	14:24:30	02/15/2011 04:40:10	02/15/2011 04:40:43
		02/15/2011 01:59:46		02/15/2011 04:40:43	02/15/2011 04:41:36
96	0213173754	02/14/2011 11:35:16	14:22:48	02/15/2011 04:41:36	02/15/2011 04:42:08
		02/15/2011 01:58:04		02/15/2011 04:42:08	02/15/2011 04:43:02
97	0213173755	02/14/2011 11:35:16	14:08:31	02/15/2011 04:43:02	02/15/2011 04:43:35
		02/15/2011 01:43:47		02/15/2011 04:43:35	02/15/2011 04:44:28
98	0213173756	02/14/2011 11:35:16	14:25:44	02/15/2011 04:44:28	02/15/2011 04:44:59
		02/15/2011 02:01:00		02/15/2011 04:44:59	02/15/2011 04:45:52
99	0213173757	02/14/2011 11:35:16	14:16:17	02/15/2011 04:45:52	02/15/2011 04:46:24
		02/15/2011 01:51:34		02/15/2011 04:46:24	02/15/2011 04:47:16
100	0213173758	02/14/2011 11:35:16	14:24:44	02/15/2011 04:47:16	02/15/2011 04:47:48
		02/15/2011 02:00:00		02/15/2011 04:47:48	02/15/2011 04:48:41
101	0213173759	02/14/2011 11:35:17	14:20:39	02/15/2011 04:48:41	02/15/2011 04:49:16
		02/15/2011 01:55:56		02/15/2011 04:49:16	02/15/2011 04:50:07
102	0213173760	02/14/2011 11:35:17	14:37:24	02/15/2011 04:50:07	02/15/2011 04:50:44
		02/15/2011 02:12:40		02/15/2011 04:50:44	02/15/2011 04:51:39
103	0213173761	02/14/2011 11:35:17	14:36:27	02/15/2011 04:51:39	02/15/2011 04:52:17
		02/15/2011 02:11:44		02/15/2011 04:52:17	02/15/2011 04:53:13
104	0213173762	02/14/2011 11:35:17	14:36:19	02/15/2011 04:53:13	02/15/2011 04:53:50
		02/15/2011 02:11:36		02/15/2011 04:53:50	02/15/2011 04:54:43
105	0213173763	02/14/2011 11:35:17	14:18:28	02/15/2011 04:54:44	02/15/2011 04:55:24
		02/15/2011 01:53:44		02/15/2011 04:55:24	02/15/2011 04:56:14
106	0213173764	02/14/2011 11:35:17	14:28:36	02/15/2011 04:56:14	02/15/2011 04:56:49
		02/15/2011 02:03:53		02/15/2011 04:56:49	02/15/2011 04:57:44
107	0213173765	02/14/2011 11:35:17	14:42:25	02/15/2011 04:57:44	02/15/2011 04:58:21
		02/15/2011 02:17:42		02/15/2011 04:58:21	02/15/2011 04:59:11
108	0213173766	02/14/2011 11:35:17	14:24:55	02/15/2011 04:59:11	02/15/2011 04:59:48
		02/15/2011 02:00:12		02/15/2011 04:59:48	02/15/2011 05:00:41
109	0213173767	02/14/2011 11:35:17	14:16:37	02/15/2011 05:00:41	02/15/2011 05:01:18
		02/15/2011 01:51:54		02/15/2011 05:01:18	02/15/2011 05:02:13
110	0213173768	02/14/2011 11:35:17	14:25:53	02/15/2011 05:02:13	02/15/2011 05:02:53
		02/15/2011 02:01:10		02/15/2011 05:02:53	02/15/2011 05:03:49
111	0213173769	02/14/2011 11:35:17	14:25:16	02/15/2011 05:03:49	02/15/2011 05:04:21
		02/15/2011 02:00:33		02/15/2011 05:04:21	02/15/2011 05:05:17
112	0213173770	02/14/2011 11:35:17	14:36:49	02/15/2011 05:05:17	02/15/2011 05:05:53
		02/15/2011 02:12:06		02/15/2011 05:05:53	02/15/2011 05:06:44

Throughput Stream	Seed	Query Start Query End	Duration	RF1 Start RF1 End	RF2 Start RF2 End
113	0213173771	02/14/2011 11:35:17	14:35:05	02/15/2011 05:06:44	02/15/2011 05:07:20
		02/15/2011 02:10:22		02/15/2011 05:07:20	02/15/2011 05:08:09
114	0213173772	02/14/2011 11:35:17	14:25:37	02/15/2011 05:08:09	02/15/2011 05:08:42
		02/15/2011 02:00:54		02/15/2011 05:08:42	02/15/2011 05:09:36
115	0213173773	02/14/2011 11:35:17	14:45:14	02/15/2011 05:09:37	02/15/2011 05:10:09
		02/15/2011 02:20:31		02/15/2011 05:10:09	02/15/2011 05:11:12
116	0213173774	02/14/2011 11:35:17	14:33:23	02/15/2011 05:11:12	02/15/2011 05:11:46
		02/15/2011 02:08:40		02/15/2011 05:11:46	02/15/2011 05:12:39
117	0213173775	02/14/2011 11:35:17	14:08:42	02/15/2011 05:12:40	02/15/2011 05:13:14
		02/15/2011 01:43:59		02/15/2011 05:13:13	02/15/2011 05:14:11
118	0213173776	02/14/2011 11:35:17	14:39:08	02/15/2011 05:14:11	02/15/2011 05:14:44
		02/15/2011 02:14:26		02/15/2011 05:14:44	02/15/2011 05:15:34
119	0213173777	02/14/2011 11:35:17	14:33:55	02/15/2011 05:15:34	02/15/2011 05:16:06
		02/15/2011 02:09:12		02/15/2011 05:16:06	02/15/2011 05:17:03
120	0213173778	02/14/2011 11:35:17	14:33:01	02/15/2011 05:17:03	02/15/2011 05:17:39
		02/15/2011 02:08:18		02/15/2011 05:17:39	02/15/2011 05:18:35
121	0213173779	02/14/2011 11:35:17	14:34:17	02/15/2011 05:18:35	02/15/2011 05:19:09
		02/15/2011 02:09:35		02/15/2011 05:19:09	02/15/2011 05:20:05
122	0213173780	02/14/2011 11:35:17	14:44:56	02/15/2011 05:20:05	02/15/2011 05:20:40
		02/15/2011 02:20:14		02/15/2011 05:20:40	02/15/2011 05:21:30
123	0213173781	02/14/2011 11:35:18	14:36:13	02/15/2011 05:21:30	02/15/2011 05:22:05
		02/15/2011 02:11:30		02/15/2011 05:22:05	02/15/2011 05:22:59
124	0213173782	02/14/2011 11:35:18	14:45:15	02/15/2011 05:22:59	02/15/2011 05:23:31
		02/15/2011 02:20:33		02/15/2011 05:23:31	02/15/2011 05:24:24
125	0213173783	02/14/2011 11:35:18	14:45:41	02/15/2011 05:24:25	02/15/2011 05:24:58
		02/15/2011 02:20:58		02/15/2011 05:24:58	02/15/2011 05:25:55
126	0213173784	02/14/2011 11:35:18	14:39:25	02/15/2011 05:25:55	02/15/2011 05:26:31
		02/15/2011 02:14:43		02/15/2011 05:26:31	02/15/2011 05:27:23
127	0213173785	02/14/2011 11:35:18	14:37:27	02/15/2011 05:27:23	02/15/2011 05:27:59
		02/15/2011 02:12:45		02/15/2011 05:27:59	02/15/2011 05:28:52
128	0213173786	02/14/2011 11:35:18	14:39:28	02/15/2011 05:28:52	02/15/2011 05:29:32
		02/15/2011 02:14:46		02/15/2011 05:29:32	02/15/2011 05:30:23

**TPC-H Timing Intervals (in seconds):**

Stream ID	Q1	Q2	Q3	Q4	Q5	Q6	Q7	Q8	Q9	Q10	Q11	Q12
0	147.5	14.8	10.7	10.9	43.3	7.7	47.2	39.0	180.4	25.4	28.2	39.6
1	1,962.6	2,108.2	4,825.3	1,751.2	3,212.6	3,433.2	2,101.5	1,465.5	1,398.2	1,291.7	2,369.8	2,424.1
2	1,678.9	3,188.8	1,534.0	1,422.0	2,241.8	15.5	1,284.8	2,315.6	3,616.9	2,175.5	2,079.2	2,692.6
3	3,318.8	1,381.9	1,842.0	3,488.3	5,213.7	3,048.5	2,167.1	61.6	2,210.1	2,157.1	1,337.2	2,098.7
4	1,572.0	1,393.8	2,007.9	1,753.9	100.4	3,101.0	1,348.5	2,301.4	2,569.3	1,911.2	2,585.3	3,431.0
5	1,284.8	2,130.2	2,735.8	3,528.4	1,393.0	3,166.4	2,483.5	1,722.9	1,751.2	1,961.4	2,324.3	1,489.4
6	1,442.2	1,687.4	5,071.2	1,873.5	1,975.7	2,441.4	2,997.6	2,158.8	3,480.9	198.0	1,983.0	2,859.2
7	2,131.1	2,385.8	2,258.2	2,231.9	1,806.7	1,499.5	1,391.4	4,712.9	2,314.6	1,571.0	2,072.1	2,065.2
8	5,023.6	1,389.1	2,234.9	2,237.8	2,359.1	1,933.4	2,058.2	2,319.3	3,561.7	1,711.3	1,763.2	3,317.8
9	1,381.5	3,385.0	2,150.0	1,319.0	1,963.0	3,307.1	1,678.5	579.2	1,488.4	2,060.3	2,337.1	1,515.3
10	2,460.5	3,190.1	2,099.7	1,568.0	1,760.8	542.2	3,435.9	2,036.5	1,270.8	2,212.9	1,442.1	2,341.8
11	1,559.9	1,515.4	2,099.4	2,182.8	2,725.5	1,554.4	1,793.1	2,297.1	1,368.4	2,405.7	3,266.6	1,399.4
12	801.7	2,744.3	1,674.8	2,047.9	1,284.5	3,082.9	4,702.6	1,849.7	2,310.7	1,342.5	2,272.8	3,416.0
13	2,619.8	2,602.2	3,229.7	1,382.2	1,891.6	2,228.1	3,251.3	1,791.6	1,799.1	2,328.0	2,219.5	3,281.2
14	2,308.8	825.8	1,593.4	3,257.4	3,304.2	1,751.0	2,201.8	1,516.0	4,927.0	1,387.5	1,652.4	2,035.2

Stream ID	Q1	Q2	Q3	Q4	Q5	Q6	Q7	Q8	Q9	Q10	Q11	Q12
15	1,570.7	1,560.8	2,220.7	1,976.7	1,291.6	1,454.4	2,223.5	3,291.0	5,041.3	3,305.0	2,393.9	3,206.6
16	1,147.6	2,282.4	4,691.2	2,257.6	3,270.6	3,159.1	2,186.0	1,481.4	2,516.8	2,384.9	1,643.8	1,776.3
17	1,558.4	3,345.7	1,083.1	1,619.1	3,215.8	2,193.9	2,154.6	2,695.3	2,443.7	1,513.4	3,237.0	1,504.9
18	2,595.3	2,224.8	1,505.2	4,660.1	3,234.4	3,226.6	1,593.4	3,306.0	1,438.5	1,793.1	2,290.0	1,671.8
19	1,638.4	3,149.7	1,975.5	1,112.9	2,264.4	1,490.7	1,440.3	1,643.9	2,209.2	2,364.7	1,459.1	4,705.3
20	2,230.7	1,757.4	1,477.4	2,258.5	2,504.5	2,160.9	1,570.7	1,510.4	2,014.4	1,291.7	1,323.2	2,249.6
21	2,400.8	1,770.4	1,856.6	3,340.2	1,472.4	1,723.8	1,438.5	1,736.8	1,413.8	2,402.3	2,195.6	3,323.2
22	1,714.6	3,255.0	1,448.0	3,295.2	1,517.2	1,591.8	1,638.7	1,645.1	2,417.3	2,333.6	3,302.5	2,259.4
23	2,210.7	2,248.3	2,086.3	1,532.8	1,819.6	2,614.0	1,544.9	3,261.5	3,483.5	1,438.4	3,214.9	2,432.3
24	1,617.3	1,639.2	4,719.4	2,238.0	1,619.1	3,226.8	1,284.1	2,285.1	2,559.8	3,106.0	2,092.6	1,594.7
25	4,913.9	3,193.5	1,561.9	1,296.8	2,252.2	2,162.3	3,267.1	2,030.8	1,730.5	2,429.9	2,236.2	1,876.9
26	1,560.0	4,632.6	1,491.1	2,163.2	3,230.6	1,890.4	1,471.2	1,674.9	2,379.0	2,401.9	2,249.6	1,732.8
27	1,793.1	2,317.7	1,473.1	3,143.6	1,823.0	2,965.7	2,267.8	2,983.0	2,861.7	1,375.2	1,515.9	1,790.0
28	3,069.4	1,517.1	1,291.6	2,040.9	1,570.2	1,375.2	2,199.5	1,746.7	2,288.7	1,356.9	1,497.2	3,390.7
29	3,587.2	1,510.8	1,676.9	1,808.2	3,233.1	2,263.7	2,117.9	4,685.0	3,427.1	1,395.9	2,083.8	2,381.4
30	2,219.6	1,830.9	2,403.6	2,089.0	3,027.5	1,522.0	1,451.0	1,654.7	1,869.6	2,229.6	1,499.7	1,715.3
31	3,220.3	1,420.3	2,940.7	2,208.0	2,089.2	1,773.9	2,643.0	1,694.3	4,951.8	1,580.0	2,885.3	1,685.4
32	1,716.1	1,818.8	2,014.9	2,976.1	2,227.4	2,561.6	2,224.8	3,381.0	1,991.5	1,480.1	1,537.2	4,589.6
33	1,772.9	3,375.7	2,180.1	2,285.3	3,275.1	1,429.6	2,150.9	1,585.3	1,592.3	2,619.8	2,990.6	1,933.2
34	1,734.5	1,830.1	2,946.1	2,493.1	1,631.2	3,076.1	2,352.6	1,828.9	2,391.3	1,648.1	3,344.1	1,554.4
35	1,825.1	2,240.3	1,612.3	1,622.1	3,159.4	1,327.6	1,513.7	2,499.4	1,917.4	3,184.6	1,844.1	2,663.9
36	2,458.6	1,781.9	2,053.3	2,851.5	2,473.6	2,386.0	3,296.0	1,460.9	1,890.4	1,448.0	1,750.9	2,333.8
37	1,515.0	1,840.4	1,585.9	1,631.0	3,284.4	2,923.1	2,431.0	2,518.4	3,286.6	2,303.6	2,473.5	1,429.6
38	2,569.5	2,429.8	2,304.0	3,312.0	4,617.4	2,902.3	2,410.4	1,866.9	2,202.8	1,456.2	2,485.1	1,695.2
39	1,386.5	2,088.3	1,795.9	2,158.4	2,158.2	2,357.8	4,741.5	1,541.8	1,875.8	2,252.2	1,482.2	1,848.5
40	2,946.3	1,640.7	3,229.4	3,273.4	2,214.1	1,476.5	1,490.1	1,681.5	2,902.0	1,299.9	2,207.4	1,895.6
41	1,537.7	4,598.9	2,348.6	1,687.7	1,744.6	2,222.9	2,214.2	3,021.2	3,705.8	1,501.3	1,625.4	1,795.9
42	1,798.5	1,658.7	4,312.7	2,359.1	2,838.4	3,074.6	2,325.9	1,693.0	1,725.9	1,492.6	2,490.1	2,009.2
43	1,580.0	2,617.1	1,826.4	1,514.4	2,261.5	1,804.6	1,659.0	2,101.5	3,234.6	2,949.4	2,128.7	2,183.2
44	2,963.9	1,598.4	1,485.2	3,165.1	4,654.6	2,957.9	2,435.8	1,881.9	2,584.9	2,306.7	1,545.0	2,211.5
45	1,568.6	1,678.4	2,237.2	1,848.6	1,881.4	2,934.6	1,299.9	2,348.1	2,208.0	1,609.9	2,376.6	3,045.3
46	1,659.0	1,688.7	2,211.4	3,204.5	1,489.3	2,801.9	2,596.6	1,649.3	2,462.2	1,951.8	2,357.4	1,500.8
47	1,672.2	1,594.1	4,624.6	1,826.0	1,661.0	2,464.8	3,092.4	2,214.3	3,484.7	1,935.3	2,000.8	2,492.9
48	1,800.4	2,087.0	1,970.9	2,963.0	1,841.1	1,336.4	1,444.8	4,264.7	2,313.1	1,548.1	2,204.4	2,354.2
49	4,447.1	1,382.6	2,466.1	2,235.5	2,203.5	1,756.3	2,226.2	2,702.2	3,320.8	1,517.4	2,010.3	3,019.0
50	1,566.1	3,176.5	2,731.8	1,631.2	2,076.7	2,958.1	1,660.9	2,377.0	1,392.5	2,188.2	2,018.2	1,694.0
51	2,548.4	3,064.4	1,647.5	1,796.2	1,960.7	2,336.4	3,013.9	2,139.2	1,663.8	2,206.1	1,454.1	2,386.3
52	1,810.9	1,565.5	1,671.2	2,465.8	2,353.2	1,723.8	1,617.8	1,951.5	1,605.8	2,292.8	3,057.6	1,609.3
53	2,621.0	2,060.6	1,799.3	2,535.8	1,657.4	3,011.2	4,321.8	1,891.6	2,358.2	1,509.1	2,289.4	3,061.5
54	2,180.9	2,379.2	2,867.0	1,688.7	1,605.3	2,328.0	2,900.1	1,591.4	1,821.9	2,801.8	2,226.1	2,962.4
55	2,930.6	2,501.3	1,969.2	2,927.4	3,021.5	2,375.8	2,187.0	1,517.0	4,571.4	1,367.3	1,566.7	1,947.8
56	1,596.7	1,744.0	2,185.7	2,159.2	1,631.2	1,827.7	2,307.7	2,824.6	4,830.2	2,892.4	2,947.7	2,955.5
57	2,854.0	2,219.5	4,362.4	2,270.4	2,932.2	2,918.6	1,977.2	1,462.3	2,621.2	2,178.1	1,687.1	1,656.7
58	1,585.9	3,030.1	2,648.2	1,529.1	3,010.8	2,107.8	2,218.5	2,363.0	2,723.7	1,843.4	2,825.6	1,951.9
59	1,923.1	2,243.2	1,836.0	4,379.2	2,918.8	2,326.7	1,855.7	3,117.2	1,420.7	1,815.6	3,062.0	1,608.6
60	1,836.0	2,887.6	1,602.3	2,678.4	2,212.8	1,515.6	1,659.0	1,895.8	2,359.6	2,033.2	1,344.1	4,446.7
61	2,337.3	1,954.4	1,456.4	2,232.2	1,959.5	1,979.2	1,877.4	2,205.8	1,515.4	1,632.6	1,406.5	2,342.9
62	2,632.7	2,085.3	1,917.0	2,952.3	1,634.4	1,915.2	1,416.3	1,635.9	1,369.3	2,038.9	2,351.0	3,053.9
63	1,760.1	2,948.9	1,506.8	2,991.2	1,641.7	1,548.7	1,806.7	1,429.2	2,073.9	2,784.1	2,917.6	2,411.4
64	2,518.2	2,866.8	1,867.0	1,492.3	1,909.5	2,030.9	2,425.6	3,283.0	3,323.5	1,384.5	2,595.6	2,209.6
65	1,445.6	1,751.8	4,328.0	2,103.2	1,506.9	2,565.6	2,912.7	2,597.0	2,608.7	2,957.5	1,737.9	1,595.0

Stream ID	Q1	Q2	Q3	Q4	Q5	Q6	Q7	Q8	Q9	Q10	Q11	Q12
66	4,623.9	2,937.5	1,555.0	1,370.9	2,039.9	1,812.3	2,625.0	1,835.3	2,758.2	2,946.2	2,376.4	2,152.2
67	1,568.8	4,397.1	1,424.1	2,197.0	2,622.0	1,798.4	1,834.7	1,525.7	2,722.9	2,164.7	2,111.8	2,148.0
68	1,969.4	2,287.3	1,659.0	2,565.8	1,841.2	2,875.6	2,523.8	2,672.3	3,124.6	1,381.6	1,573.8	1,934.6
69	2,948.3	1,842.8	1,634.0	1,806.7	1,538.9	1,386.6	2,514.6	1,855.9	1,991.9	3,002.2	2,074.0	2,936.3
70	3,290.5	1,416.5	1,668.1	2,415.0	2,588.9	2,781.9	2,210.2	4,415.7	3,216.8	3,011.8	2,153.6	2,271.5
71	2,538.3	2,394.0	2,253.3	1,779.5	2,565.4	1,450.1	3,071.6	1,524.5	2,182.6	2,823.3	1,408.8	1,492.0
72	2,964.5	3,041.5	2,845.4	2,088.6	2,050.5	1,925.7	2,996.5	1,776.1	4,385.5	1,592.5	2,862.3	1,511.5
73	1,713.2	2,436.7	2,213.5	2,599.0	2,558.4	1,890.0	2,110.0	3,202.4	1,786.9	1,511.5	1,436.4	4,466.6
74	3,033.7	3,127.4	2,483.8	2,218.9	3,095.2	1,450.3	3,130.0	1,693.2	1,983.8	1,935.5	2,721.7	1,757.5
75	3,407.3	2,833.9	2,744.9	2,293.8	1,959.8	3,045.9	1,918.1	1,970.1	2,795.3	1,530.6	3,286.9	1,333.0
76	1,923.3	2,259.9	1,624.2	1,841.1	3,109.9	1,354.2	1,479.8	2,322.4	1,754.4	2,299.8	2,375.8	1,993.3
77	2,772.2	2,122.4	2,184.1	2,646.6	2,410.4	1,794.9	3,121.5	1,468.2	3,402.3	1,475.3	1,962.8	1,741.2
78	1,511.5	1,928.6	1,602.1	1,632.6	3,076.7	2,299.6	1,959.5	2,321.1	3,264.5	2,491.0	3,068.9	1,351.6
79	3,124.8	1,964.8	2,530.2	3,134.1	4,220.8	2,945.9	2,188.3	1,965.7	2,393.9	1,408.8	2,246.3	1,779.3
80	1,839.9	2,944.4	3,346.1	2,163.1	3,051.8	2,313.7	4,352.3	1,611.6	1,395.7	2,183.9	1,559.8	2,098.8
81	2,815.4	1,910.0	3,109.0	2,328.8	1,717.5	1,514.5	2,021.8	1,713.4	1,936.4	1,419.0	3,005.1	2,206.7
82	1,400.8	4,214.2	2,018.4	2,058.0	1,920.5	2,011.6	1,939.7	2,179.7	3,573.6	1,494.5	1,420.3	2,960.7
83	1,872.5	1,825.7	3,785.3	2,833.8	2,588.8	2,886.7	3,139.1	1,478.1	1,774.7	1,797.5	2,328.9	2,308.5
84	1,299.8	1,893.8	2,028.6	1,542.3	2,112.9	3,412.8	2,036.5	2,448.7	3,449.8	3,211.9	1,912.4	1,616.1
85	3,418.0	1,663.0	2,947.9	3,173.7	4,079.9	2,578.2	3,149.9	3,494.4	2,480.0	2,739.3	1,935.5	1,933.7
86	1,569.5	1,743.2	1,932.2	1,841.4	3,520.5	2,348.0	1,354.2	2,188.4	2,470.3	1,765.1	1,827.1	3,061.0
87	1,632.7	1,867.5	1,957.6	3,123.0	1,425.7	2,645.5	2,334.7	1,662.9	2,732.7	1,790.3	2,164.4	1,426.1
88	1,716.7	1,602.5	4,073.7	1,964.9	1,798.4	2,279.9	2,424.1	3,100.7	3,232.7	3,520.2	2,238.6	1,817.3
89	1,966.1	2,055.4	1,315.7	3,150.0	1,332.9	1,553.9	1,687.8	3,732.1	2,479.5	1,531.8	2,361.6	3,198.8
90	4,054.1	1,427.5	2,576.4	1,944.3	2,228.0	1,688.2	2,376.0	3,123.0	3,358.9	1,420.0	2,495.3	2,185.2
91	1,692.2	3,151.6	3,312.8	1,855.9	1,734.1	3,178.0	1,260.0	4,001.1	1,769.5	2,689.3	2,392.1	1,428.8
92	3,190.0	2,134.7	1,490.7	1,966.6	2,916.1	3,954.6	3,130.8	1,984.2	2,330.2	2,583.7	1,557.7	2,381.3
93	1,961.1	1,475.6	1,759.1	2,132.3	1,761.6	2,109.0	3,025.5	2,299.0	1,783.8	2,212.1	2,237.0	1,804.9
94	4,231.9	1,417.5	1,971.3	2,711.6	1,914.2	2,038.0	3,876.6	2,043.0	2,422.8	1,560.7	2,178.5	3,214.8
95	2,055.0	1,354.8	2,422.6	2,074.0	1,417.2	1,996.5	3,244.3	1,385.5	2,263.9	3,243.8	2,847.9	3,308.3
96	3,312.5	4,043.8	1,971.6	2,716.5	2,827.4	2,999.1	2,167.7	1,643.2	3,981.6	1,476.1	1,643.7	1,845.4
97	1,601.2	2,077.9	2,512.3	1,830.8	1,713.2	1,926.7	2,115.8	2,674.5	4,029.8	3,059.9	3,132.9	2,296.6
98	4,349.5	2,191.3	3,774.9	1,969.6	2,711.3	2,959.2	1,939.7	1,728.7	2,991.0	1,451.5	1,988.5	1,418.7
99	1,260.0	3,159.6	4,246.5	1,450.6	2,907.4	1,731.7	2,551.7	1,866.3	3,293.1	1,929.4	2,698.5	2,740.0
100	1,947.5	2,189.6	1,923.5	3,828.6	2,598.0	2,222.4	1,999.1	3,153.4	1,764.7	1,844.7	3,039.4	1,470.8
101	2,991.8	2,073.8	1,731.1	4,282.5	2,137.5	1,617.2	1,855.9	2,002.6	2,868.1	2,178.0	1,397.1	3,901.3
102	2,491.1	1,958.1	1,656.5	2,206.1	1,339.0	1,839.1	2,028.8	3,305.0	1,822.6	1,975.7	1,579.3	2,238.3
103	3,072.1	3,249.3	1,846.7	3,159.7	2,024.0	1,969.7	1,651.6	1,421.1	1,780.2	2,339.9	2,154.8	2,875.6
104	1,935.7	2,684.7	1,494.5	2,072.9	1,957.9	1,400.5	1,638.0	1,722.7	2,187.8	3,190.5	3,217.0	2,684.7
105	2,704.8	3,143.7	1,737.0	1,542.8	1,658.7	1,407.4	2,800.0	3,205.5	3,222.8	1,641.8	2,077.8	2,084.2
106	1,662.2	1,546.1	3,712.8	2,281.9	1,245.2	2,115.6	4,457.4	2,753.3	2,507.2	2,954.1	1,892.7	1,702.4
107	3,981.6	2,083.2	1,450.0	1,653.6	2,360.6	1,778.8	2,540.8	1,561.7	3,606.9	3,149.0	2,791.0	2,051.5
108	1,282.1	3,764.9	1,647.2	1,944.2	2,481.2	1,531.0	2,004.5	1,574.8	2,963.4	2,376.1	2,144.4	2,082.0
109	1,548.5	2,067.3	1,988.5	1,925.9	1,981.3	3,157.0	2,724.5	2,559.7	3,463.9	1,514.7	1,606.5	1,944.2
110	3,197.0	2,056.8	1,914.6	1,650.3	1,282.1	1,513.3	2,761.8	2,019.7	2,088.2	4,540.4	2,893.8	2,498.8
111	3,384.3	1,672.5	2,023.8	2,858.9	1,975.4	3,243.7	1,887.2	3,756.4	3,429.4	4,595.6	2,273.7	2,109.0
112	2,611.3	3,270.5	1,973.3	1,836.5	2,418.6	1,420.9	4,684.3	1,604.8	2,282.7	3,185.0	1,564.6	1,770.0
113	3,482.3	4,625.1	2,348.8	2,049.8	2,254.8	1,983.1	3,259.8	2,144.8	4,108.7	1,594.0	1,926.8	1,432.7
114	2,166.2	2,865.4	2,359.3	2,426.0	2,750.5	1,400.9	2,093.7	3,181.4	1,535.0	1,474.7	1,643.2	3,895.6
115	3,712.9	3,160.1	2,758.5	2,454.3	3,164.8	1,348.5	3,347.9	1,720.5	2,254.6	1,465.7	2,444.3	1,500.2
116	5,061.3	3,179.6	2,393.4	2,186.3	1,975.5	3,053.1	1,543.3	2,075.7	2,758.3	1,467.5	3,128.7	1,423.9

Stream ID	Q1	Q2	Q3	Q4	Q5	Q6	Q7	Q8	Q9	Q10	Q11	Q12
117	1,916.9	2,160.4	1,303.1	1,677.0	3,307.6	1,368.8	1,453.8	2,103.0	1,884.4	1,881.6	2,450.5	1,407.4
118	3,064.6	2,048.5	2,303.7	2,408.4	2,156.7	1,334.9	3,072.6	1,554.5	5,024.1	1,514.0	2,027.4	1,923.4
119	1,471.6	2,068.9	1,531.7	2,012.5	3,107.4	1,602.7	1,324.2	2,174.7	3,421.6	2,704.5	3,449.6	1,560.4
120	3,500.0	1,506.0	2,739.8	3,098.9	3,774.6	3,072.2	2,013.3	2,048.2	3,271.7	1,461.5	2,101.1	2,143.1
121	2,010.0	3,174.2	4,935.0	1,920.3	3,329.1	2,170.9	3,782.8	1,438.5	1,651.6	2,430.7	1,472.7	2,149.1
122	2,314.2	1,618.9	3,221.5	1,780.1	1,499.2	1,349.9	2,302.2	1,988.4	1,648.9	1,789.7	3,402.2	2,139.8
123	1,489.6	3,713.6	2,157.2	2,099.0	2,010.3	2,147.9	1,754.2	2,028.8	3,038.8	1,514.0	1,392.9	3,328.0
124	1,901.8	1,407.6	3,393.5	3,093.3	2,285.2	3,066.2	3,387.5	1,745.2	1,767.0	2,033.0	2,232.1	2,395.6
125	1,501.6	1,500.3	1,983.4	1,390.0	2,227.3	5,071.0	1,644.0	2,314.7	3,425.2	3,298.1	1,775.9	1,625.8
126	3,062.7	1,677.8	3,378.6	3,039.0	3,613.0	2,358.2	3,440.3	5,138.4	2,294.3	2,697.2	2,026.9	1,896.1
127	1,489.6	2,060.8	1,835.7	2,044.8	5,106.5	1,870.1	1,560.6	2,151.7	2,688.0	1,368.4	1,308.8	3,053.3
128	2,036.6	1,430.9	1,302.9	3,202.5	1,647.4	2,326.3	2,206.7	1,446.7	3,588.1	1,860.7	2,156.3	1,490.7
Min	147.5	14.8	10.7	10.9	43.3	7.7	47.2	39.0	180.4	25.4	28.2	39.6
Avg	2,305.9	2,287.8	2,301.5	2,278.2	2,336.3	2,192.6	2,314.2	2,200.1	2,577.6	2,066.4	2,173.3	2,240.7
Max	5,061.3	4,632.6	5,071.2	4,660.1	5,213.7	5,071.0	4,741.5	5,138.4	5,041.3	4,595.6	3,449.6	4,705.3

Stream ID	Q13	Q14	Q15	Q16	Q17	Q18	Q19	Q20	Q21	Q22	RF1	RF2
0	77.9	6.1	10.5	14.6	52.0	188.4	61.7	22.1	192.2	30.0	33.0	40.9
1	2,593.9	1,584.2	2,230.8	2,214.1	2,030.2	3,466.6	1,681.3	3,075.7	471.8	1,665.8	35.7	46.9
2	2,026.9	3,534.9	1,560.9	3,077.2	5,226.9	1,385.1	2,582.6	1,687.4	1,793.1	2,130.0	38.0	54.6
3	1,586.9	2,295.3	2,709.1	1,462.2	2,599.2	3,058.1	1,541.6	2,034.9	1,639.3	1,969.1	35.4	56.7
4	1,594.0	3,534.9	2,433.9	2,231.5	2,164.1	1,479.1	3,212.7	1,850.1	5,141.9	1,628.7	41.8	50.9
5	2,046.5	1,559.9	4,776.8	2,158.5	1,678.1	3,178.0	3,524.5	1,588.0	528.2	2,348.3	37.0	51.7
6	3,033.4	1,385.2	3,494.2	1,483.0	2,132.6	2,086.9	1,600.4	1,569.6	1,851.0	2,380.8	35.1	52.8
7	1,687.0	1,758.6	2,126.1	1,522.5	3,323.0	1,104.8	2,358.2	3,178.7	3,665.2	3,232.9	38.6	56.9
8	1,496.4	1,715.3	3,253.3	1,394.5	3,339.2	2,021.8	551.5	2,566.5	1,592.2	1,518.1	33.6	55.7
9	4,826.0	1,554.4	2,709.7	1,887.8	2,507.1	1,510.3	2,313.7	3,129.5	3,509.8	2,110.2	38.2	51.5
10	2,290.8	2,587.0	4,871.0	1,397.8	3,301.6	3,388.2	1,661.3	1,706.9	2,180.4	1,597.4	34.2	50.6
11	1,488.3	4,773.6	640.3	3,382.7	3,281.9	3,387.4	2,085.3	2,205.8	1,675.5	2,161.9	34.4	53.7
12	1,678.5	1,966.0	1,839.1	3,310.3	3,346.3	2,283.8	1,707.2	2,080.8	1,410.9	2,190.3	34.8	55.0
13	1,355.6	1,503.2	2,021.2	2,102.8	4,630.0	1,723.8	1,747.1	1,528.8	1,068.9	3,233.2	39.1	53.1
14	2,698.0	1,335.2	3,195.1	1,564.0	2,355.0	2,236.1	2,138.0	3,360.9	2,074.2	1,640.8	37.6	54.5
15	1,594.0	2,264.1	2,601.2	854.7	3,190.6	1,839.2	1,455.8	1,491.7	2,401.9	2,113.8	36.8	48.8
16	1,738.7	3,339.6	1,618.1	2,345.4	1,667.7	1,306.5	1,602.0	2,366.8	1,469.9	3,233.3	37.9	55.7
17	1,491.1	1,976.9	3,154.2	4,650.8	2,305.3	2,310.7	1,441.2	1,774.0	2,339.5	1,511.9	33.2	54.7
18	3,197.6	1,091.8	1,387.5	1,770.8	2,317.1	1,560.3	1,473.2	2,286.5	2,718.3	2,067.4	34.2	50.1
19	1,560.2	3,271.8	2,331.3	3,401.4	2,295.2	1,594.0	2,183.4	1,604.9	2,504.5	3,195.7	34.1	49.2
20	3,205.0	3,118.8	4,851.6	1,139.3	2,253.7	3,315.0	3,284.4	2,113.1	1,526.1	2,466.9	40.1	53.6
21	1,472.4	4,698.7	2,258.1	2,654.2	2,401.1	1,793.1	3,214.6	1,147.3	3,145.7	1,537.5	34.1	48.9
22	3,281.1	4,715.4	1,350.2	1,161.7	1,921.6	2,359.2	2,610.8	1,803.1	2,381.0	2,119.6	33.6	54.7
23	1,724.4	3,012.5	4,525.5	2,245.2	1,487.1	1,576.4	1,699.3	1,463.1	2,040.3	1,747.7	36.6	52.2
24	2,247.6	3,215.8	1,563.2	1,801.3	1,938.5	3,175.7	1,422.0	1,549.2	2,749.1	2,386.6	37.8	55.7
25	3,034.3	3,315.2	1,368.1	2,233.2	1,618.2	1,161.2	1,640.1	1,675.7	2,158.4	2,686.7	37.3	50.1
26	1,355.5	3,170.3	1,388.9	1,721.2	2,052.0	1,366.3	2,663.3	3,359.2	2,374.3	3,158.0	35.9	50.3
27	1,947.7	1,302.1	2,542.5	1,731.0	4,668.0	1,438.5	1,707.7	2,064.9	3,546.4	2,284.0	36.4	55.4
28	2,428.9	2,227.2	2,601.2	2,205.9	1,546.8	2,223.5	1,706.9	3,269.9	3,275.1	4,683.0	33.2	50.7
29	1,687.9	1,380.3	1,579.8	2,343.8	2,461.3	2,904.7	1,884.3	1,886.8	1,514.4	2,296.3	31.8	51.4
30	3,199.6	2,317.6	2,296.3	1,608.8	4,743.9	3,274.6	1,632.2	1,787.4	2,386.2	3,394.3	32.2	53.6
31	1,377.2	2,076.8	1,381.0	1,881.8	1,804.9	2,255.1	2,365.4	2,354.4	3,733.6	1,876.5	35.2	56.9
32	2,238.5	1,327.6	1,581.8	3,275.6	3,331.1	1,772.5	2,316.6	1,800.9	1,585.9	2,385.1	34.3	51.6

Stream ID	Q13	Q14	Q15	Q16	Q17	Q18	Q19	Q20	Q21	Q22	RF1	RF2
33	1,651.7	3,129.7	1,585.5	4,611.0	2,438.3	1,389.1	1,849.2	1,575.9	2,180.4	2,244.4	33.6	55.7
34	4,646.0	3,192.4	1,711.0	1,534.4	1,484.4	2,478.0	2,211.3	1,608.4	2,321.9	2,126.9	36.2	58.8
35	1,997.2	1,585.5	2,091.0	2,220.1	4,693.0	1,542.9	1,940.0	2,965.2	2,211.8	3,416.7	33.7	56.8
36	2,333.9	1,572.1	1,585.4	1,517.9	4,647.8	3,192.4	1,931.1	1,692.7	3,068.4	2,410.0	38.9	48.9
37	1,768.6	4,603.1	1,888.7	1,565.4	1,758.9	1,810.9	2,517.7	1,871.8	2,088.6	3,004.6	40.7	55.0
38	1,461.2	2,990.7	1,782.4	3,161.8	1,675.6	2,094.0	1,730.7	1,767.0	1,613.7	1,996.2	36.6	52.9
39	1,933.9	3,169.8	2,952.5	2,213.7	1,650.6	1,541.4	2,732.2	3,219.4	3,251.1	2,137.9	40.5	56.5
40	1,768.5	2,217.5	4,603.1	1,569.2	3,298.2	1,576.9	1,793.8	2,279.4	2,232.5	2,397.2	37.0	56.8
41	2,034.3	1,790.8	1,542.9	2,381.2	2,763.3	2,952.3	1,457.5	2,935.5	1,761.8	2,371.5	36.8	51.5
42	2,386.2	1,548.7	2,324.1	2,368.0	1,947.9	3,272.1	1,721.1	3,216.5	2,247.1	2,119.2	34.2	47.5
43	1,783.7	3,174.8	1,868.5	3,077.6	4,722.2	1,415.0	2,558.9	1,427.4	1,771.1	2,413.2	38.1	56.5
44	1,296.2	1,979.9	2,375.5	1,742.8	2,502.3	3,192.5	1,570.3	1,667.4	1,582.1	1,811.8	32.9	57.2
45	1,477.1	3,307.0	2,430.3	2,220.7	2,653.2	1,577.1	3,116.7	1,553.7	4,508.0	1,785.4	34.0	54.9
46	2,362.7	1,845.2	4,379.4	2,946.2	1,910.7	2,839.1	3,033.8	1,537.4	2,317.1	2,071.5	35.3	52.6
47	2,838.4	1,479.9	3,271.8	1,509.0	2,215.3	2,323.5	1,476.0	1,839.7	2,490.9	2,384.2	33.7	56.0
48	1,745.9	1,937.5	1,979.4	1,486.4	2,938.2	2,483.4	2,597.7	3,211.5	3,278.3	3,006.5	32.4	54.4
49	1,560.5	1,840.8	3,297.8	1,682.2	2,912.1	2,076.8	2,345.3	2,041.3	1,773.6	1,514.3	32.5	54.6
50	4,315.7	1,753.6	2,346.8	1,848.4	2,555.7	1,859.5	2,508.0	2,854.3	2,923.5	1,733.0	33.0	53.8
51	1,937.7	2,376.4	4,423.7	1,632.5	2,863.0	3,196.5	1,704.7	1,631.5	2,446.2	1,853.0	34.4	53.6
52	1,273.8	4,290.4	2,522.7	3,017.1	2,931.0	3,168.8	2,021.3	2,580.5	1,506.7	2,370.1	36.7	56.7
53	1,551.7	2,076.8	1,969.8	3,076.2	2,963.4	2,223.2	1,513.1	1,808.0	1,409.4	2,582.4	36.5	48.7
54	1,396.6	1,542.9	2,214.2	2,090.5	4,373.9	1,710.6	1,800.6	1,542.5	2,977.0	2,997.8	34.9	50.8
55	2,030.9	1,665.9	2,950.8	1,899.9	2,203.3	2,231.6	1,847.5	2,975.1	2,535.8	1,590.5	34.8	51.5
56	1,526.2	2,126.7	2,346.8	2,521.9	3,012.8	1,646.1	1,426.1	1,642.0	2,033.7	1,660.3	38.4	53.0
57	1,939.8	2,948.1	1,755.1	2,744.5	1,865.9	1,317.1	1,676.4	2,037.2	2,375.8	3,014.5	35.8	52.2
58	1,489.9	1,682.5	2,949.1	4,359.4	2,496.2	2,034.3	1,767.1	1,859.8	2,361.4	1,428.5	37.2	57.6
59	3,107.6	2,661.4	1,351.6	2,152.7	2,194.6	1,511.3	1,774.7	2,526.1	2,723.6	2,043.5	35.5	49.6
60	1,568.6	2,937.6	2,810.0	3,047.5	2,397.2	1,477.1	2,317.7	1,785.2	2,236.8	3,023.2	40.4	54.7
61	2,917.0	2,977.2	4,406.0	2,720.9	2,599.9	2,954.1	3,033.7	1,831.8	1,552.0	2,751.5	33.1	49.7
62	1,845.3	4,357.3	2,140.6	2,067.3	2,904.5	1,792.2	2,962.5	2,770.7	2,976.0	1,620.0	32.4	52.4
63	2,925.1	4,389.9	1,499.7	2,803.5	1,959.3	2,313.7	2,470.9	1,802.5	2,231.2	2,064.1	32.4	47.1
64	2,023.8	2,728.7	4,387.1	2,204.5	1,776.0	2,803.1	1,695.7	1,371.7	2,132.7	1,882.5	35.9	53.1
65	2,231.7	2,868.5	1,813.4	2,690.2	2,118.6	3,210.7	1,541.0	1,854.6	3,092.6	1,868.9	32.7	56.0
66	3,140.0	2,881.5	1,664.7	2,098.0	1,512.8	2,853.3	1,889.9	1,559.7	2,317.5	2,293.3	34.3	52.8
67	3,031.5	2,548.0	1,297.1	2,640.1	1,916.1	1,736.3	2,053.8	2,912.7	3,360.2	3,213.9	36.9	51.3
68	2,099.2	2,928.4	2,030.9	1,516.0	4,422.4	1,435.7	2,469.5	2,006.5	3,290.8	2,303.6	37.1	47.5
69	2,201.7	2,111.2	1,932.4	2,349.6	1,528.1	2,815.6	1,588.1	2,592.5	3,358.2	4,413.8	36.5	54.2
70	1,792.0	1,356.7	1,630.9	2,022.7	2,317.2	2,620.1	1,915.1	1,871.7	1,560.8	2,457.0	34.0	57.6
71	3,210.9	2,004.3	2,576.4	1,668.6	4,495.2	2,565.6	1,918.7	2,127.0	1,731.3	3,181.5	35.0	49.2
72	1,340.8	1,923.2	1,354.2	1,863.1	1,962.9	2,030.9	2,539.3	2,360.5	2,937.1	2,102.3	36.5	53.8
73	3,127.9	1,351.6	3,079.8	2,871.4	2,653.0	1,980.6	2,153.6	1,920.5	1,592.5	2,356.6	32.6	55.4
74	1,259.8	2,326.8	3,090.1	4,451.1	2,400.1	1,408.8	2,257.4	1,996.5	2,131.9	1,799.7	32.7	52.6
75	4,167.5	2,239.6	1,994.1	1,570.1	1,653.8	2,134.5	1,982.0	1,700.8	3,157.0	2,226.4	37.1	51.3
76	2,090.1	3,087.7	1,903.6	3,028.6	4,485.4	1,340.8	2,030.1	2,753.8	2,527.3	3,227.7	32.4	56.7
77	3,025.1	1,642.7	1,282.1	1,936.1	4,298.8	2,299.8	2,708.4	1,706.7	3,110.7	2,234.3	32.7	52.0
78	3,271.6	4,268.3	2,132.5	1,447.2	1,847.2	1,889.6	2,378.9	2,087.3	1,922.9	2,686.6	33.1	50.6
79	1,431.0	2,625.8	2,116.2	2,622.7	1,664.0	1,790.3	1,507.6	3,319.1	1,788.2	2,195.0	33.9	57.0
80	1,670.3	3,099.8	2,687.8	2,526.5	1,622.7	1,953.6	2,101.0	2,365.1	3,107.6	1,910.8	33.6	57.8
81	3,345.2	2,120.8	4,194.6	1,559.0	3,200.3	1,426.2	2,607.9	2,239.8	2,474.8	2,316.7	35.7	59.6
82	2,299.2	3,360.4	1,678.9	1,336.6	3,406.5	3,105.8	1,624.5	2,825.5	2,337.0	2,905.3	30.6	55.2
83	1,890.2	1,506.5	2,520.5	2,147.6	1,942.6	3,141.7	1,675.0	2,580.7	3,848.0	2,072.3	34.4	53.8

Stream ID	Q13	Q14	Q15	Q16	Q17	Q18	Q19	Q20	Q21	Q22	RF1	RF2
84	1,401.2	3,136.9	2,011.2	2,727.8	4,294.4	1,625.9	2,455.3	1,548.9	3,441.9	2,798.8	32.6	54.5
85	1,503.4	2,251.2	1,407.4	1,999.7	2,375.4	2,114.0	1,666.7	1,725.7	1,244.6	2,000.5	31.8	53.0
86	1,451.9	3,182.1	2,238.7	2,626.2	3,144.2	1,420.0	2,679.0	2,410.0	4,072.3	2,001.5	33.3	56.0
87	2,461.7	1,954.1	3,759.5	3,075.9	2,127.6	2,231.0	3,231.6	1,527.1	3,940.6	2,228.8	36.7	50.0
88	2,571.4	1,482.6	3,180.9	1,393.4	1,873.6	2,611.6	1,483.9	2,178.9	3,163.1	2,173.0	35.4	53.5
89	2,107.5	2,061.0	1,779.0	1,455.3	2,196.9	4,026.1	2,878.1	3,153.9	3,169.1	3,252.8	40.1	48.7
90	1,453.8	2,004.5	2,828.3	1,865.5	2,818.2	1,811.7	3,970.7	1,789.0	2,022.3	1,538.8	43.1	53.4
91	3,701.6	2,032.9	1,502.5	3,090.8	2,379.0	2,004.5	2,106.8	2,777.4	2,064.9	1,732.6	34.9	53.8
92	2,211.0	1,790.0	3,751.8	1,694.1	2,740.9	3,116.2	1,686.3	1,325.8	2,110.5	2,023.7	35.2	55.0
93	1,371.2	3,805.8	4,218.6	3,078.3	2,834.1	2,828.6	1,933.4	3,160.5	1,283.7	2,669.9	36.8	55.2
94	1,282.1	1,678.3	2,470.1	2,992.9	2,814.5	2,029.1	1,533.8	1,707.4	1,642.5	3,312.9	34.5	51.3
95	1,464.0	1,618.7	1,734.1	2,285.8	3,825.0	2,011.9	3,102.4	1,529.4	4,696.1	1,988.8	32.3	52.9
96	1,784.2	1,751.0	2,140.8	1,999.4	2,263.1	2,306.6	1,820.2	3,131.4	2,576.4	1,365.7	32.5	54.0
97	1,480.0	2,205.2	1,863.6	4,064.1	2,970.6	2,342.9	1,510.7	1,377.4	2,255.7	1,868.8	32.9	52.6
98	1,919.2	3,140.6	1,548.4	3,252.9	2,062.2	1,438.2	1,765.3	2,381.2	2,833.8	2,128.1	31.3	52.9
99	1,641.8	1,574.4	2,079.4	3,809.9	2,227.6	2,255.6	2,064.4	2,177.7	2,236.5	1,475.1	31.4	52.1
100	2,981.2	4,254.5	1,503.3	3,104.8	2,197.0	1,554.2	1,754.7	2,536.0	2,236.5	1,780.2	32.5	52.7
101	1,303.1	2,663.9	3,255.5	3,180.0	2,256.3	1,453.8	1,974.1	2,053.9	1,502.3	2,959.2	34.8	51.2
102	2,651.8	2,973.9	3,794.5	4,318.4	2,858.2	3,135.9	2,161.5	1,556.1	1,455.0	3,299.0	36.9	55.0
103	1,977.7	3,769.6	2,053.2	1,326.6	3,307.4	1,413.7	2,241.1	4,363.1	2,954.1	1,636.1	37.9	55.7
104	2,916.5	3,791.0	1,532.7	4,379.2	3,276.6	2,242.7	1,836.2	1,957.2	2,172.5	2,287.8	36.7	53.8
105	1,979.1	2,549.4	3,902.6	2,173.0	1,980.3	4,360.2	1,390.5	1,516.7	2,329.3	2,100.3	40.2	50.3
106	2,137.5	2,682.6	1,968.8	2,935.0	2,121.5	3,114.6	1,634.8	1,980.2	3,207.8	1,502.3	34.5	54.8
107	3,186.3	3,160.0	1,964.0	2,086.6	1,781.8	4,378.2	2,135.6	1,589.5	2,105.1	1,549.8	37.5	49.7
108	4,587.7	2,019.3	1,546.7	2,987.9	1,873.9	1,950.5	1,565.0	3,155.8	3,166.4	3,245.8	36.6	53.6
109	2,339.9	4,474.7	1,451.7	1,284.0	3,778.2	1,646.0	2,755.9	1,746.0	3,293.4	2,145.6	36.9	54.5
110	2,135.0	2,402.1	1,416.5	2,132.4	1,699.6	3,137.5	1,608.2	2,045.5	3,182.5	3,776.6	40.3	55.6
111	1,403.1	1,532.7	1,413.2	1,342.6	2,102.1	2,351.9	2,012.4	2,217.0	1,494.5	2,836.6	32.0	56.3
112	3,141.3	2,014.5	2,848.0	1,426.4	3,835.4	2,041.8	2,086.7	2,096.8	1,354.5	3,141.1	35.7	50.6
113	1,581.7	1,811.2	1,569.3	2,223.1	1,481.3	1,295.5	2,920.5	2,151.6	3,057.3	3,202.8	35.8	49.6
114	3,120.2	1,497.6	4,714.2	3,242.5	2,010.3	1,962.3	2,018.5	2,053.6	1,377.2	2,148.4	33.0	54.1
115	1,612.1	1,892.9	4,722.6	3,837.0	2,228.9	1,550.7	2,184.5	2,047.2	1,894.3	1,811.3	32.4	63.0
116	3,672.1	1,870.2	1,995.8	1,533.3	1,581.5	2,027.1	1,973.2	1,696.8	3,433.2	2,372.9	34.0	53.3
117	2,382.9	4,695.2	1,854.1	3,245.6	3,838.0	1,642.9	2,026.7	2,420.2	2,717.4	3,184.3	34.0	57.3
118	3,329.1	1,671.8	1,489.6	2,036.4	3,749.5	1,937.1	3,410.0	1,462.0	3,066.0	2,164.2	33.0	50.1
119	4,860.8	3,698.1	2,210.0	1,679.0	1,490.1	2,298.3	2,293.5	3,189.9	1,803.4	2,481.9	32.3	56.2
120	1,514.0	2,350.5	1,976.1	1,939.8	1,514.4	1,859.5	1,777.2	4,908.8	1,423.4	2,386.5	36.3	56.2
121	1,413.7	3,073.3	2,449.1	2,799.1	1,685.7	2,042.0	1,615.0	1,994.8	3,066.0	1,853.8	33.7	55.5
122	5,107.1	2,164.9	3,644.5	1,448.3	3,189.4	1,617.9	3,692.5	2,232.7	2,708.1	2,236.2	35.2	49.9
123	2,210.0	5,038.2	1,651.1	1,284.6	3,472.3	3,005.0	1,668.3	2,454.0	2,315.2	2,799.8	34.9	53.7
124	1,310.2	1,609.6	2,815.5	2,117.9	2,240.4	3,174.1	1,570.1	1,914.7	5,402.2	2,252.6	32.6	53.1
125	1,433.6	3,116.1	2,455.4	2,379.4	3,873.2	1,730.5	2,333.1	1,663.2	3,743.1	2,655.8	33.1	57.1
126	1,564.6	2,326.0	1,335.1	2,086.5	2,289.1	1,904.2	1,689.3	1,422.9	1,385.0	2,140.4	35.8	52.2
127	1,514.0	3,048.8	2,203.6	2,712.2	3,434.9	1,675.5	2,454.3	3,309.8	3,626.4	2,129.8	36.4	52.3
128	2,727.8	2,209.5	3,729.0	3,321.2	2,068.8	1,784.9	3,190.6	1,630.1	5,106.5	2,304.2	40.0	51.0
Min	77.9	6.1	10.5	14.6	52.0	188.4	61.7	22.1	192.2	30.0	30.6	40.9
Avg	2,206.8	2,504.5	2,395.0	2,314.3	2,611.6	2,185.5	2,085.1	2,146.2	2,455.4	2,321.9	35.3	53.3
Max	5,107.1	5,038.2	4,871.0	4,650.8	5,226.9	4,378.2	3,970.7	4,908.8	5,402.2	4,683.0	43.1	63.0

Benchmark Sponsor: Brad Carlile  
 Dir. Strategic Applications Engineering (SAE)  
 Oracle  
 3295 NW 211th Terrace  
 Hillsboro OR 97124

March 2, 2011 (updated 9/12/11 – see Additional Audit Notes below)

I verified the TPC Benchmark™ H performance of the following configuration:

Platform: **SPARC Enterprise M9000 Server**  
 Database Manager: **Oracle Database 11g R2 Enterprise Edition with Partitioning**  
 Operating System: **Oracle Solaris 10 9/10**

The results were:

CPU (Speed)	Memory	Disks	<b>QphH@3,000GB</b>
<b>SPARC Enterprise M9000 Server</b>			
64 x SPARC64 VII+ (3.0GHz)	1024GB	512 x 600GB 15Krpm 4 x 146GB 10Krpm int.	<b>386,478.3</b>

In my opinion, this performance result was produced in compliance with the TPC's requirements for the benchmark. The following verification items were given special attention:

- The database records were defined with the proper layout and size
- The database population was generated using DBGEN
- The database was properly scaled to 3,000GB and populated accordingly
- The compliance of the database auxiliary data structures was verified



- The database load time was correctly measured and reported
- The required ACID properties were verified and met
- The query input variables were generated by QGEN
- The query text was produced using minor modifications and one query variant
- The execution of the queries against the SF1 database produced compliant answers
- A compliant implementation specific layer was used to drive the tests
- The throughput tests involved 128 query streams
- The ratio between the longest and the shortest query was such that no query timings were adjusted
- The execution times for queries and refresh functions were correctly measured and reported
- The repeatability of the measured results was verified
- The system pricing was verified for major components and maintenance
- The major pages from the FDR were verified for accuracy

Additional Audit Notes:

**Update 9/12/2011:** The measured system included (4) 146GB disk drives that were substituted by (4) 300GB disk drives in the priced configuration. Based on the specifications of these drives and on performance data collected, it is my opinion that this substitution has no significant effect on performance.

**Update 9/12/2011:** Since original publication of this result, the part number for a hardware component in the priced configuration changed. While the part number of the component changed, the hardware makeup of the component did not change. Therefore, it is my opinion that this substitution has no effect on performance.

Respectfully Yours,



François Raab  
President

# Table of Contents

0 General Items .....	17
0.1 Benchmark Sponsor .....	17
0.2 Parameter Settings .....	17
0.3 Configuration Diagram .....	17
1 Clause 1 Logical Database Design .....	19
1.1 Database Definition Statements .....	19
1.2 Physical Organization .....	19
1.3 Horizontal Partitioning .....	19
1.4 Replication .....	19
2 Clause 2 Queries and Refresh Functions .....	20
2.1 Query Language .....	20
2.2 Verifying Method for Random Number Generation .....	20
2.3 Generating Values for Substitution Parameters .....	20
2.4 Query Text and Output Data from Qualification Database .....	20
2.5 Query Substitution Parameters and Seeds Used .....	20
2.6 Query Isolation Level .....	20
2.7 Source Code of Refresh Functions .....	20
3 Clause 3 Database System Properties .....	21
3.1 ACID Properties .....	21
3.2 Atomicity .....	21
3.2.1 Completed Transaction.....	21
3.2.2 Aborted Transaction.....	21
3.3 Consistency .....	21
3.3.1 Consistency Test.....	21
3.4 Isolation .....	22
3.4.1 Read-Write Conflict with Commit.....	22
3.4.2 Read-Write Conflict with Rollback.....	22
3.4.3 Write-Write Conflict with Commit.....	22
3.4.4 Write-Write Conflict with Rollback.....	22
3.4.5 Concurrent Progress of Read and Write Transactions.....	23
3.4.6 Read-Only Query Conflict with Update Transaction.....	23
3.5 Durability .....	23
3.5.1 Failure of a Durable Medium.....	23
3.5.2 System Crash / Memory Failure / Loss of External Power.....	24
4 Clause 4 Scaling and Database Population .....	25
4.1 Ending Cardinality of Tables .....	25
4.2 Distribution of Tables and Logs Across Media .....	25
4.3 Database partition/replication mapping .....	25
4.4 Data redundancy mechanisms .....	25
4.5 Modifications to the DBGEN .....	26
4.6 Database Load Time .....	26
4.7 Data Storage Ratio .....	26

4.8 Database Load Mechanism Details and Illustration .....	26
4.9 Qualification Database Configuration .....	27
4.10 Database Verification .....	27
4.11 DBGEN Verification .....	27
4.12 Referential Integrity .....	27
5 Clause 5 Performance Metrics and Execution Rules .....	28
5.1 System Activity Between Load and Performance Tests .....	28
5.2 Steps in the Power Test .....	28
5.3 Timing Intervals for Each Query and Refresh Functions .....	28
5.4 Number of Streams for the Throughput Test .....	28
5.5 Start and End Date/Times for Each Query Stream .....	28
5.6 Total Elapsed Time of the Measurement Interval .....	28
5.7 Refresh Function Start Date/Time and Finish Date/Time .....	28
5.8 Timing Intervals for Each Query and Each Refresh Function for Each Stream .....	29
5.9 Performance Metrics .....	29
5.10 The Performance Metric and Numerical Quantities from Both Runs .....	29
5.11 System Activity Between Performance Tests .....	29
5.12 Documentation to satisfy Clause 5.2.7 .....	29
5.13 Query Output validation .....	29
6 Clause 6 SUT and Driver Implementation .....	30
6.1 Driver .....	30
6.2 Implementation-Specific Layer .....	30
6.3 Profile-Directed Optimization .....	30
7 Clause 7 Pricing .....	31
7.1 Hardware and Software Used .....	31
7.2 Total Three-Year Price .....	31
7.3 Availability Date .....	31
7.4 Benchmark Performance Metric .....	31
8 Supporting Files Index Table .....	32
9 Auditor's Information and Attestation Letter .....	33

---

## TPC Benchmark H Overview

The TPC Benchmark™ H (TPC-H) is a Decision Support benchmark. It is a suite of business-oriented ad-hoc queries and concurrent modifications. The queries and the data populating the database have been chosen to have broad industry-wide relevance while maintaining a sufficient degree of ease of implementation. This benchmark illustrates Decision Support systems that:

- Examine large volumes of data
- Execute queries with a high degree of complexity
- Give answers to critical business questions

TPC-H evaluates the performance of various Decision Support systems by the execution of sets of queries against a standard database under controlled conditions. The TPC-H queries:

- Give answers to real-world business questions
- Simulate generated ad-hoc queries
- Are far more complex than most OLTP transactions
- Include a rich breadth of operators and selectivity constraints
- Generate intensive activity on the part of the database server component of the system under test
- Are executed against a database complying to specific population and scaling requirements
- Are implemented with constraints derived from staying closely synchronized with an on-line production database

---

## 0 General Items

### 0.1 Benchmark Sponsor

*A statement identifying the benchmark sponsor(s) and other participating companies must be provided.*

Oracle Corporation is the sponsor of this TPC-H benchmark.

### 0.2 Parameter Settings

*Settings must be provided for all customer-tunable parameters and options that have been changed from the defaults found in actual products, including but not limited to:*

- *Database Tuning Options*
- *Optimizer/Query execution options*
- *Query processing tool/language configuration parameters*
- *Recovery/commit options*
- *Consistency/locking options*
- *Operating system and configuration parameters*
- *Configuration parameters and options for any other software component incorporated into the pricing structure*
- *Compiler optimization options*

The Supporting Files Archive contains the system and Oracle parameters used in this benchmark.

### 0.3 Configuration Diagram

*Provide diagrams of both the measured and priced configurations, accompanied by a description of the differences.*

Measured Configuration:

SPARC Enterprise M9000 Server, was configured with:

- 64 SPARC64 VII+ 3000 MHz processors
- 1024 GB memory
- 1 Ethernet controller
- 4 146GB internal SAS disk drives
- 32 Sun Storage 6180 Arrays, each containing 16 600GB 15K RPM disk drives

Priced Configuration:

SPARC Enterprise M9000 Server, was configured with:

- 64 SPARC64 VII+ 3000 MHz processors
- 1024 GB memory
- 1 Ethernet controller
- 4 300GB internal SAS disk drives
- 32 Sun Storage 6180 Arrays, each containing 16 600GB 15K RPM disk drives
- Sun Fire X4170 M2 Server

Differences in Configurations:

Priced Configuration includes 1 Sun Fire X4170 M2 Server as the system console. 4 300GB SAS drives were substituted in the priced configuration for 4 146GB SAS disks. These disks contain only the OS, swap space and results filesystem.

## System Under Test

### SPARC Enterprise M9000 Server

64 x SPARC64 VII+ 3000 MHz processors  
1024 GB Memory  
4 300GB SAS Internal disks



32 Sun Storage 6180 Arrays  
- 32x ( 16 600 GB 15K RPM)  
- 64 ports to host



1 Sun Fire X4170-M2 Server

---

# 1 Clause 1 - Logical Database Design

## 1.1 Database Definition Statements

*Listings must be provided for all table definition statements and all other statements used to set up the test and qualification databases. All listings must be reported in the supporting files archive.*

The Supporting Files Archive contains the programs and scripts that create and analyze the tables and indexes for the TPC-H database.

## 1.2 Physical Organization

*The physical organization of tables and indices within the test and qualification databases must be disclosed. If the column ordering of any table is different from that specified in Clause 1.4, it must be noted. The physical organization of tables must be reported in the supporting files archive.*

No record clustering or index clustering was used. Column ordering was changed for some tables. Refer to the table create statements in the Supporting Files Archive for further details.

## 1.3 Horizontal Partitioning

*Horizontal partitioning of tables and rows in the test and qualification databases (see Clause 1.5.4) must be disclosed. Scripts to perform horizontal partitioning must be reported in the supporting files archive.*

Horizontal partitioning was used for all tables except NATION and REGION. Refer to the table/index create statements in the Supporting Files Archive for more details.

## 1.4 Replication

*Any replication of physical objects must be disclosed and must conform to the requirements of Clause 1.5.7. Scripts to perform any replication must be reported in the supporting files archive.*

No replication was used.

## 1.5 Tunable Parameters

*Script or text for all hardware and software tunable parameters must be reported in the supporting files archive.*

All hardware and software parameters changed from their defaults are reported in the Supporting Files Archive.

---

## 2 Clause 2 - Queries and Refresh Functions

### 2.1 Query Language

*The query language used to implement the queries must be identified.*

SQL was the query language used to implement all queries.

### 2.2 QGen Version Verification

*The version number, release number, modification number, and patch level of **QGen** must be disclosed. Any modifications to the **QGen** (see Clause 2.1.4) source code (see Appendix D) must be reported in the supporting files archive.*

QGen from TPC-H Rev. 2.14.0 was used for this publication.

### 2.3 Query Text and Output Data from Qualification Database

*The executable query text used for query validation must be disclosed along with the corresponding output data generated during the execution of the query text against the qualification database. If minor modifications (see Clause 2.2.3) have been applied to any functional query definitions or approved variants in order to obtain executable query text, these modifications must be disclosed and justified. The justification for a particular minor query modification can apply collectively to all queries for which it has been used. The output data for the power and throughput tests must be made available electronically upon request.*

The Supporting Files Archive contains the executable query text and query output.

### 2.4 Query Substitution Parameters and Seeds Used

*The query substitution parameters used for all performance tests must be disclosed in tabular format, along with the seeds used to generate these parameters.*

The Supporting Files Archive contains the seed and query substitution parameters.

### 2.5 Query Isolation Level

*The isolation level used to run the queries must be disclosed. If the isolation level does not map closely to the levels defined in Clause 3.4, additional descriptive detail must be provided.*

The queries and transactions were run with isolation Level 3 (repeatable read).

### 2.6 Source Code of Refresh Functions

*The details of how the refresh functions were implemented must be disclosed (including source code of any non-commercial program used).*

The refresh functions are in Clause8/RF\_source in the Supporting Files Archive.



---

## 3 Clause 3 - Database System Properties Related Items

### 3.1 ACID Properties

*The results of the ACID tests must be disclosed along with a description of how the ACID requirements were met. All code (including queries, stored procedures etc.) used to test the ACID requirements and their entire output must be reported in the supporting files archive.*

Tests conducted to demonstrate compliance for each of the ACID requirements is detailed in the following section. Source code for the ACID test is included in the Supporting Files Archive.

### 3.2 Atomicity

*The system under test must guarantee that transactions are atomic; the system will either perform all individual operations on the data, or will assure that no partially-completed operations leave any effects on the data.*

#### 3.2.1 Completed Transaction

*Perform the ACID Transaction for a randomly selected set of input data and verify that the appropriate rows have been changed in the ORDERS, LINEITEM, and HISTORY tables*

1. The total price from the ORDERS table and the extended price from the LINEITEM table were retrieved for a randomly selected order key.
2. The ACID Transaction was performed using the order key from step 1.
3. The ACID Transaction committed.
4. The total price from the ORDERS table and the extended price from the LINEITEM table were retrieved for the same order key. It was verified that the appropriate rows had been changed.

#### 3.2.2 Aborted Transaction

*Perform the ACID Transaction for a randomly selected set of input data, substituting a ROLLBACK of the transaction for the COMMIT of the transaction. Verify that the appropriate rows have not been changed in the ORDERS, LINEITEM, and HISTORY tables.*

1. The total price from the ORDERS table and the extended price from the LINEITEM table were retrieved for a randomly selected order key.
2. The ACID Transaction was performed using the order key from step 1. The transaction was stopped prior to the commit.
3. The ACID Transaction was ROLLED BACK.
4. The total price from the ORDERS table and the extended price from the LINEITEM table were retrieved for the same order key. It was verified that the appropriate rows had not been changed.

### 3.3 Consistency

*Consistency is the property of the application that requires any execution of transactions to take the database from one consistent state to another.*

#### 3.3.1 Consistency Test

*Verify that ORDERS and LINEITEM tables are initially consistent, submit the prescribed number of ACID Transactions with randomly selected input parameters, and re-verify the consistency of the ORDERS and LINEITEM.*

1. The consistency of the ORDERS and LINEITEM tables was verified based on a sample of order keys.
2. 100 ACID Transactions were submitted by each of 129 execution streams.

3. The consistency of the ORDERS and LINEITEM tables was re-verified.

## 3.4 Isolation

*Operations of concurrent transactions must yield results which are indistinguishable from the results which would be obtained by forcing each transaction to be serially executed to completion in the proper order.*

### 3.4.1 Read-Write Conflict with Commit

*Demonstrate isolation for the read-write conflict of a read-write transaction and a read-only transaction when the read-write transaction is committed.*

1. An ACID Transaction was started for a randomly selected O\_KEY, L\_KEY, and DELTA. The ACID Transaction was suspended prior to COMMIT.
2. An ACID Query was started for the same O\_KEY used in step 1. The ACID Query blocked and did not see the uncommitted changes made by the ACID Transaction.
3. The ACID Transaction was resumed and COMMITTED.
4. The ACID Query completed. It returned the data as committed by the ACID Transaction.

### 3.4.2 Read-Write Conflict with Rollback

*Demonstrate isolation for the read-write conflict of a read-write transaction and a read-only transaction when the read-write transaction is rolled back.*

1. An ACID Transaction was started for a randomly selected O\_KEY, L\_KEY, and DELTA. The ACID Transaction was suspended prior to ROLLBACK.
2. An ACID Query was started for the same O\_KEY used in step 1. The ACID Query did not see the uncommitted changes made by the ACID Transaction.
3. The ACID Transaction was ROLLED BACK.
4. The ACID Query completed.

### 3.4.3 Write-Write Conflict with Commit

*Demonstrate isolation for the write-write conflict of two update transactions when the first transaction is committed.*

1. An ACID Transaction, T1, was started for a randomly selected O\_KEY, L\_KEY, and DELTA. T1 was suspended prior to COMMIT.
2. Another ACID Transaction, T2, was started using the same O\_KEY and L\_KEY and a randomly selected DELTA.
3. T2 waited.
4. T1 was allowed to COMMIT and T2 completed.
5. It was verified that  $T2.L\_EXTENDEDPRICE = T1.L\_EXTENDEDPRICE + (DELTA1 * (T1.L\_EXTENDEDPRICE / T1.L\_QUANTITY))$

### 3.4.4 Write-Write Conflict with Rollback

*Demonstrate isolation for the write-write conflict of two update transactions when the first transaction is rolled back.*

1. An ACID Transaction, T1, was started for a randomly selected O\_KEY, L\_KEY, and DELTA. T1 was suspended prior to ROLLBACK.
2. Another ACID Transaction, T2, was started using the same O\_KEY and L\_KEY and a randomly selected DELTA.
3. T2 waited.
4. T1 was allowed to ROLLBACK and T2 completed.
5. It was verified that  $T2.L\_EXTENDEDPRICE = T1.L\_EXTENDEDPRICE$ .

### 3.4.5 Concurrent Progress of Read and Write Transactions

*Demonstrate the ability of read and write transactions affecting different database tables to make progress concurrently.*

1. An ACID Transaction, T1, was started for a randomly selected O\_KEY, L\_KEY, and DELTA. T1 was suspended prior to ROLLBACK.
2. Another Transaction, T2, was started which did the following:  
  
For random values of PS\_PARTKEY and PS\_SUPPKEY, all columns of the PARTSUPP table for which PS\_PARTKEY and PS\_SUPPKEY are equal, are returned.
3. T2 completed.
4. T1 was allowed to COMMIT.
5. It was verified that appropriate rows in ORDERS, LINEITEM and HISTORY tables were changed.

### 3.4.6 Read-Only Query Conflict with Update Transaction

*Demonstrate that the continuous submission of arbitrary (read-only) queries against one or more tables of the database does not indefinitely delay update transactions affecting those tables from making progress.*

1. A Transaction, T1, executing Q1 against the qualification database, was started using a randomly selected DELTA.
2. An ACID Transaction T2, was started for a randomly selected O\_KEY, L\_KEY and DELTA.
3. T2 completed and appropriate rows in the ORDERS, LINEITEM and HISTORY tables had been changed.
4. Transaction T1 completed executing Q1.

## 3.5 Durability

*The SUT must guarantee durability: the ability to preserve the effects of committed transactions and insure database consistency after recovery from any one of the failures listed in Clause 3.5.3.*

### 3.5.1 Failure of a Durable Medium

*Guarantee the database and committed updates are preserved across a permanent irrecoverable failure of any single durable medium containing TPC-H database tables or recovery log tables.*

The disks containing the TPC-H tables, indexes and log files are mirrored across the 6180 arrays using Oracle Automatic Storage Manager (ASM). Write-cache was enabled on the 6180s. There were two separate tests performed serially.

Test 1: An array controller failure test

The following steps were performed to simulate an array controller failure.

1. The ORDERS and LINEITEM tables were verified to be consistent.
2. 129 streams of the ACID transactions were started.
3. After more than 100 transactions from each stream completed, the connection between the host and the controller in the array was disconnected to simulate a controller failure. That caused the failure to the disks associated with the controller.
4. Because ASM mirroring was used across the arrays the transactions continued without any interruption.
5. A sample from the durability success file was matched against the contents for the HISTORY table and it was verified that no committed transactions had been lost.
6. The ORDERS and LINEITEM tables were verified to be consistent.

Test 2: A disk failure test containing the tables, indexes and log files

The following steps were performed to simulate a disk failure.

1. The ORDERS and LINEITEM tables were verified to be consistent.
2. 129 streams of the ACID transactions were started.
3. After more than 100 transactions from each stream completed, a disk was removed from the 6180 array, thus causing its failure.
4. Because ASM mirroring was used the transactions continued without any interruption.
5. A sample from the durability success file was matched against the contents for the HISTORY table and it was verified that no committed transactions had been lost.
6. The ORDERS and LINEITEM tables were verified to be consistent.

### **3.5.2 System Crash / Memory Failure / Loss of External Power**

*System Crash: Guarantee the database and committed updates are preserved across an instantaneous interruption (system crash/system hang) in processing which requires the system to reboot to recover.*

*Memory Failure: Guarantee the database and committed updates are preserved across failure of all or part of memory (loss of contents).*

*Loss of External Power: Guarantee the database and committed updates are preserved during the loss of all external power for an indefinite time period*

Each of these requirements were satisfied in a single test. The following steps were performed.

1. The ORDERS and LINEITEM tables are verified to be consistent.
2. 129 streams of the ACID transactions are started
3. After more than 100 transactions from each stream has completed, the power breakers to the SUT are turned off thus halting processing immediately and indefinitely.
4. Power was restored to the SUT, the system was started, along with the database.
5. A sample from the durability success file was matched against the contents for the HISTORY table and it was verified that no committed transactions had been lost.
6. The ORDERS and LINEITEM tables were verified to be consistent.

---

## 4 Clause 4 - Scaling and Database Population

### 4.1 Ending Cardinality of Tables

*The cardinality (i.e., the number of rows) of each table of the test database, as it existed at the completion of the database load (see clause 4.2.5) must be disclosed.*

Table	Rows
Lineitem	18,000,048,306
Orders	4,500,000,000
Partsupp	2,400,000,000
Part	600,000,000
Customer	450,000,000
Supplier	30,000,000
Nation	25
Region	5

### 4.2 Distribution of Tables and Logs Across Media

*The distribution of tables and logs across all media must be explicitly described.*

The TPC-H tables, indexes, logs and temporary tables are distributed across the Sun Storage 6180 Arrays. Each of the 512 disks in the Sun Storage 6180 arrays are formatted to have two slices, s0 and s1. Using Oracle Automatic Storage Manager (ASM), the slices are assigned to disk groups which creates RAID-0 stripes across the devices and slices. The TPC-H tables, indexes and logs are assigned to the s0 disk group whose devices are split into separate “failgroups” (256 devices in each failgroup). The devices in one failgroup are mirrored to the other failgroup within the disk group. The temporary tables are assigned to the s1 disk group which is striped across all devices evenly. Please see the scripts to generate the disk groups in the Supporting Files Archive in Clause2/DB\_creation\_scripts.

### 4.3 Database partition/replication mapping

*The mapping of database partitions/replications must be explicitly described.*

The database was not replicated.

Horizontal partitioning was used for base tables LINEITEM, ORDERS, PARTSUPP, PART, SUPPLIER and CUSTOMER. The details for this partitioning can be understood by examining the syntax of the table and index definition statements in Supporting Files Archive.

### 4.4 Data redundancy mechanisms

*Implementations may use data redundancy mechanism(s). The type of data redundancy mechanisms(s) and any configuration parameters, i.e., RAID level must be disclosed for each device.*

Items	Storage Redundancy Levels
Base Tables	Level Three
Auxiliary Data Structures	Level Three
DBMS Temporary Space	Level Zero
OS and DBMS Software	Level One
Oracle Redo Logs	Level Three

#### 4.5 Modifications to the DBGEN

*The version number, release number, modification number, and patch level of **DBGen** must be disclosed. Any modifications to the **DBGen** (see Clause 4.2.1) source code (see Appendix D) must be reported in the supporting files archive.*

DBGen from TPC-H Rev. 2.14.0 was used for this result.

#### 4.6 Database Load Time

*The database load time for the test database (see clause 4.3) must be disclosed.*

The database load time was 2:59:01.

#### 4.7 Data Storage Ratio

*The data storage ratio must be disclosed. It is computed as the ratio between the total amount of priced disk space, and the chosen test database size as defined in Clause 4.1.3.*

The data storage ratio is computed from the following information:

Disk Type	# Of Disks	Space Per Disk*	Sub-Total Disk Space**
ST6180	512	600GB	307,200 GB
Internal SAS	4	300GB	1,600 GB
		<b>Total Space</b>	<b>308,800</b>
		<b>Data Storage Ratio</b>	<b>102.9</b>

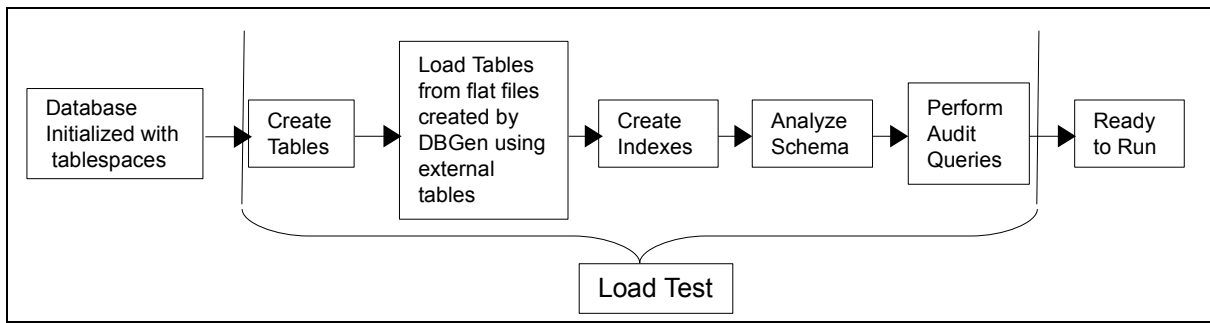
\* Disk manufacturer definition of one GB is  $10^9$  bytes

\*\*In this calculation one GB is defined as  $2^{30}$  bytes

#### 4.8 Database Load Mechanism Details and Illustration

*The details of the database load must be reported in the supporting files archive . Disclosure of the load procedure includes all steps, scripts, input and configuration files required to completely reproduce the test and qualification databases. A block diagram illustrating the overall process must be disclosed.*

The database was loaded using data stored on flat files that are all on the tested and priced configurations. Oracle created external tables using the files that were created by the DBGEN program.



## 4.9 Qualification Database Configuration

*Any differences between the configuration of the qualification database and the test database must be disclosed.*

The qualification database used the same scripts to create and load the data with adjustments for the size difference between the test database and the qualification database.

## 4.10 Memory Ratio

*The memory to database size ratio must be disclosed.*

The memory to database size ratio is 34.1.

---

## 5 Clause 5 - Performance Metrics and Execution Rules

### 5.1 System Activity Between Load and Performance Tests

*Any system activity on the SUT that takes place between the conclusion of the load test and the beginning of the performance test must be fully reported in the **supporting files archive** including listings of scripts, command logs and system activity .*

There was no system activity on the SUT between the conclusion of the load and the beginning of the performance test.

### 5.2 Steps in the Power Test

*The details of the steps followed to implement the power test (.e.g., system boot, database restart, etc.) must be reported in the **supporting files archive**.*

The following steps were used to implement the power test:

1. RF1 Refresh Transaction
2. Stream 00 Execution
3. RF2 Refresh Transaction

### 5.3 Timing Intervals for Each Query and Refresh Functions

*The timing intervals (see Clause 5.3.7) for each query and for both refresh functions must be reported for the power test. The output for each query and for both refresh functions must be reported in the **supporting files archive**.*

The timing intervals for each query and for both refresh functions are contained in the Numerical Quantities section of the Executive Summary, located at the beginning of this document.

### 5.4 Number of Streams for the Throughput Test

*The number of execution streams used for the throughput test must be disclosed.*

128 streams were used for the throughput test.

### 5.5 Start and End Date/Times for Each Query Stream

*The start time and finish time for each query stream for the throughput test must be disclosed. The output for each query stream for the throughput test must be reported in the **supporting files archive**.*

The throughput test start time and finish time for each stream are contained in the Numerical Quantities section of the Executive Summary, located at the beginning of this document.

### 5.6 Total Elapsed Time of the Measurement Interval

*The total elapsed time of the measurement interval (see Clause 5.3.6) must be reported for the throughput test.*

The total elapsed time of the throughput test is contained in the Numerical Quantities section of Executive Summary, located at the beginning of this document.

### 5.7 Refresh Function Start Date/Time and Finish Date/Time

*The start time and, finish time for each refresh function in the refresh stream for the throughput test must be*



disclosed. The output of each refresh function in the refresh stream for the throughput test must be reported in the **supporting files archive**.

The start and finish times for each refresh function in the refresh stream are contained in the Numerical Quantities section of the Executive Summary, located at the beginning of this document.

## 5.8 Performance Metrics

*The computed performance metric, related numerical quantities and price performance metric must be reported.*

The performance metrics, and the numbers on which they are based, are contained in the Numerical Quantities section of the Executive Summary, located at the beginning of this document.

## 5.9 The Performance Metric and Numerical Quantities from Both Runs

*The performance metric and numerical quantities from both runs must be disclosed.*

Performance results from the first two executions of the TPC-H benchmark indicated the following percent difference for the metric points:

Run ID	QppH@3000GB	QthH@3000GB	QphH@3000GB
Run 1	329,560.9	497,249.9	404,813.7
Run 2	316,835.8	471,428.6	386,478.3

## 5.10 System Activity Between Performance Tests

*Any activity on the SUT that takes place between the conclusion of Run1 and the beginning of Run2 must be fully disclosed including system activity, listings of scripts or command logs along with any system reboots or database restarts.*

There was no activity on the SUT between Run1 and Run 2.

## 5.11 Query Output validation

*The output of the Query Output Validation Test must reported in the supporting files archive.*

The Supporting Files Archive contains the documentation.

---

## 6 Clause 6 - SUT and Driver Implementation

### 6.1 Driver

*A detailed textual description of how the driver performs its functions, how its various components interact and any product functionalities or environmental settings on which it relies and all related source code, scripts and configuration files must be reported in the supporting files archive. The information provided should be sufficient for an independent reconstruction of the driver .*

The Power Test and Throughput Test are performed by executing a shell script called runTPCHpt. QGEN is first called with a stream id of 0 to generate the queries for the Power Test. Then script runTPCHpus is executed asynchronously to control the refresh functions RF1 and RF2. The script then continues to the query portion of the Power Test (qexecpl.c ISL), which waits until RF1 is completed. After the query portion of the power run has finished the refresh function RF2 is executed by the same refresh stream that previously executed refresh function RF1.

Following the Power Test, QGEN is again executed with the subsequent stream ids and seeds to generate new queries for each stream. Then qexecpl.c is called asynchronously to execute each streams concurrently. Then runTPCHus is executed to control the throughput test refresh function's pairs of RF1 and RF2.

Both wall-clock and high-resolution times are collected for all measurement intervals.

### 6.2 Implementation-Specific Layer

*If an implementation specific layer is used, then a detailed description of how it performs its functions, how its various components interact and any product functionalities or environmental setting on which it relies must be disclosed. All related source code, scripts and configuration files must be reported in the supporting files archive. The information provided should be sufficient for an independent reconstruction of the implementation specific layer .*

Query execution text generated by QGEN is picked up by the ISL program which submits the query to the SUT.

The ISL program (qexecpl.c) utilizes the Oracle Call Interface (OCI) to communicate with the Oracle database on the SUT. EQTs directly generated by QGEN are read and submitted to the SUT via the ISL program (qexecpl.c) as dynamic SQL statements. The ISL program then fetches the query execution output and reports it to the user. Timings are taken at intervals specified in Section 5.3.7 of the TPC-H benchmark specification.

### 6.3 Profile-Directed Optimization

*If profile-directed optimization as described in Clause 5.2.9 is used, such use must be disclosed. In particular, the procedure and any scripts used to perform the optimization must be reported in the supporting files archive .*

Profile-directed optimization was not used.

---

## 7 Clause 7 - Pricing

### 7.1 Hardware and Software Used

*A detailed list of hardware and software used in the Priced Configuration must be reported. The listing for each separately Orderable item must have vendor Part Number, description, and applicable release/revision level, price source, unit price, quantity, extended price, applicable Discounted price and 3-year maintenance price. If package-pricing is used, the vendor Part Number of the package and a description uniquely identifying each of the Components of the package must be disclosed to a sufficient level of detail to meet the requirements of 1.4.1.1.*

The Executive Summary contains a list of the priced hardware and software, including maintenance for 3-years, and any applicable discounts.

### 7.2 Total Three-Year Price

*The total 3-year price of the Priced Configuration must be reported, including: hardware, software, and maintenance charges. The justification of any Discounts applied must be disclosed in the price sheet. Sufficient detail of what items are being discounted and by how much they are being discounted must be provided so that the Discount amount used in the computation of the total system cost can be independently reproduced.*

The Executive Summary contains the details for the total 3-year pricing of the configuration. Oracle's discounts are based upon US list prices and for similar quantities and configurations. A discount of 50% has been applied to all Oracle hardware, software and services based on the total value and quantities of the components of the configuration, including full payment of all components and maintenance.

For assistance with any of these prices or their applicability to any customer's requirements please contact:

Mary Beth Pierantoni

mary.beth.pierantoni@oracle.com

### 7.3 Availability Date

*The committed Availability Date of Components used in the price calculations must be reported. The Availability Date must be reported on the first page of the Executive Summary and with a precision of one day. When the priced system includes products with different availability dates, the reported Availability Date for the priced system must be a date at which all Components are committed to be Generally Available. Each Component used in the Priced Configuration is considered to be Available on the Availability Date unless an earlier date is specified.*

All components of the Priced Configuration are available now, with the exception of SPARC Enterprise M9000 with SPARC64 VII+ which will be available by September 22, 2011.

### 7.4 Benchmark Performance Metric

*A statement of the benchmark performance metric, as well as the respective calculations for 3-year pricing, price/performance, and the availability date must be included.*

<i>Performance Metric</i>	<i>Price/Performance Metric</i>	<i>Total 3-year Cost</i>	<i>Availability Date</i>
386,478.3 QphH@3000GB	\$18.19/QphH@3000GB	\$7,030,009 USD	September 22, 2011

---

## 8 Supporting Files Index Table

*An index for all files included in the supporting files archive as required by Clause 8.3.2 through 8.3.8 must be provided in the report.*

Clause	Description	Archive File	Pathname
Clause 1	OS and DB parameter settings	benchmark_scripts.zip	SupportingFiles/Clause1/OS_DB_parameters
Clause 2	DB creation scripts	benchmark_scripts.zip	SupportingFiles/Clause2/DB_creation_scripts
Clause 3	ACID scripts	benchmark_scripts.zip	SupportingFiles/Clause3/ACID_scripts
	ACID output	benchmark_scripts.zip	SupportingFiles/Clause3/ACID_output
Clause 4	DB Load scripts	benchmark_scripts.zip	SupportingFiles/Clause4/DB_load_scripts
	Qualification output	benchmark_scripts.zip	SupportingFiles/Clause4/QUAL_output
Clause 5	Query output results	run1results.zip run2results.zip	
Clause 6	Implementation Specific layer source code	benchmark_scripts.zip	SupportingFiles/Clause6/Implementation_code
Clause 8	Query substitution parameters	benchmark_scripts.zip	SupportingFiles/Claues8/QueryParms
	RF function source	benchmark_scripts.zip	SupportingFiles/Clause8/RF_source

---

## 9 Auditor's Information and Attestation Letter

*The auditor's agency name, address, phone number, and Attestation letter with a brief audit summary report indicating compliance must be included in the full disclosure report. A statement should be included specifying who to contact in order to obtain further information regarding the audit process.*

The auditor's attestation letter is included at the front of this report, just after the Executive Summary.