



**Cisco Systems, Inc.**

---

TPC Benchmark™ H  
Full Disclosure Report  
for  
Cisco UCS C460 M4 Rack-Mount Server  
using  
Microsoft SQL Server 2016 Enterprise Edition  
And  
Windows Server 2016 Standard Edition

---

**First Edition**

**November 28, 2016**

## **First Edition – November 28, 2016**

*Cisco and the Cisco Logo are trademarks of Cisco Systems, Inc. and/or its affiliates in the U.S. and other countries. A listing of Cisco's trademarks can be found at [www.cisco.com/go/trademarks](http://www.cisco.com/go/trademarks). Third party trademarks mentioned are the property of their respective owners. The use of the word partner does not imply a partnership relationship between Cisco and any other company.*

*The Cisco products, services or features identified in this document may not yet be available or may not be available in all areas and may be subject to change without notice. Consult your local Cisco business contact for information on the products or services available in your area. You can find additional information via Cisco's World Wide Web server at <http://www.cisco.com>. Actual performance and environmental costs of Cisco products will vary depending on individual customer configurations and conditions.*

# Table of Contents

ABSTRACT .....	6
PREFACE .....	11
TPC BENCHMARK™ H OVERVIEW.....	11
GENERAL ITEMS .....	13
0.1 TEST SPONSOR.....	13
0.2 PARAMETER SETTINGS .....	13
0.3 CONFIGURATION DIAGRAMS.....	13
CLAUSE 1: LOGICAL DATABASE DESIGN.....	15
1.1 DATABASE DEFINITION STATEMENTS.....	15
1.2 PHYSICAL ORGANIZATION .....	15
1.3 HORIZONTAL PARTITIONING .....	15
1.4 REPLICATION .....	15
CLAUSE 2: QUERIES AND REFRESH FUNCTIONS RELATED ITEMS.....	16
2.1 QUERY LANGUAGE.....	16
2.2 VERIFYING METHOD OF RANDOM NUMBER GENERATION.....	16
2.3 GENERATING VALUES FOR SUBSTITUTION PARAMETERS .....	16
2.4 QUERY TEXT AND OUTPUT DATA FROM QUALIFICATION DATABASE .....	16
2.5 QUERY SUBSTITUTION PARAMETERS AND SEEDS USED.....	16
2.6 ISOLATION LEVEL.....	17
2.7 SOURCE CODE OF REFRESH FUNCTIONS .....	17
CLAUSE 3: DATABASE SYSTEM PROPERTIES .....	18
3.1 ACID PROPERTIES.....	18
3.2 ATOMICITY REQUIREMENTS .....	18
3.2.1 ATOMICITY OF THE COMPLETED TRANSACTIONS .....	18
3.2.2 ATOMICITY OF ABORTED TRANSACTIONS .....	18
3.3 CONSISTENCY REQUIREMENTS .....	18
3.3.1 CONSISTENCY TEST .....	19
3.4 ISOLATION REQUIREMENTS.....	19

3.4.1 ISOLATION TEST 1 - READ-WRITE CONFLICT WITH COMMIT.....	19
3.4.2 ISOLATION TEST 2 - READ-WRITE CONFLICT WITH ROLLBACK .....	19
3.4.3 ISOLATION TEST 3 - WRITE-WRITE CONFLICT WITH COMMIT.....	19
3.4.4 ISOLATION TEST 4 - WRITE-WRITE CONFLICT WITH ROLLBACK.....	20
3.4.5 ISOLATION TEST 5 – CONCURRENT READ AND WRITE TRANSACTIONS ON DIFFERENT TABLES .....	20
3.4.6 ISOLATION TEST 6 – UPDATE TRANSACTIONS DURING CONTINUOUS READ-ONLY QUERY STREAM	20
3.5 DURABILITY REQUIREMENTS.....	20
3.5.1 PERMANENT UNRECOVERABLE FAILURE OF ANY DURABLE MEDIUM.....	20
3.5.2 LOSS OF LOG AND SYSTEM CRASH TEST .....	21
3.5.3 MEMORY FAILURE.....	21
CLAUSE 4: SCALING AND DATABASE POPULATION .....	22
4.1 INITIAL CARDINALITY OF TABLES .....	22
4.2 DISTRIBUTION OF TABLES AND LOGS ACROSS MEDIA .....	22
4.3 MAPPING OF DATABASE PARTITIONS/REPLICATIONS.....	23
4.4 IMPLEMENTATION OF RAID.....	23
4.5 DBGEN MODIFICATIONS.....	23
4.6 DATABASE LOAD TIME.....	24
4.7 DATA STORAGE RATIO.....	24
4.8 DATABASE LOAD MECHANISM DETAILS AND ILLUSTRATION.....	24
4.9 QUALIFICATION DATABASE CONFIGURATION .....	26
4.10 MEMORY TO DATABASE SIZE PERCENTAGE .....	26
CLAUSE 5: PERFORMANCE METRICS AND EXECUTION RULES RELATED ITEMS .....	27
5.1 STEPS IN THE POWER TEST.....	27
5.2 TIMING INTERVALS FOR EACH QUERY AND REFRESH FUNCTION .....	27
5.3 NUMBER OF STREAMS FOR THE THROUGHPUT TEST.....	27
5.4 START AND END DATE/TIMES FOR EACH QUERY STREAM .....	27
5.5 TOTAL ELAPSED TIME FOR THE MEASUREMENT INTERVAL.....	27
5.6 REFRESH FUNCTION START DATE/TIME AND FINISH DATE/TIME.....	27
5.7 TIMING INTERVALS FOR EACH QUERY AND EACH REFRESH FUNCTION FOR EACH STREAM .....	27
5.8 PERFORMANCE METRICS.....	28

5.9 THE PERFORMANCE METRIC AND NUMERICAL QUANTITIES FROM BOTH RUNS .....	28
5.10 SYSTEM ACTIVITY BETWEEN TESTS .....	28
CLAUSE 6: SUT AND DRIVER IMPLEMENTATION RELATED ITEMS.....	29
6.1 DRIVER .....	29
6.2 IMPLEMENTATION SPECIFIC LAYER (ISL).....	29
6.3 PROFILE-DIRECTED OPTIMIZATION .....	29
CLAUSE 7: PRICING RELATED ITEMS .....	30
7.1 HARDWARE AND SOFTWARE USED.....	30
7.2 TOTAL 3 YEAR PRICE .....	30
7.3 AVAILABILITY DATE .....	30
7.4 ORDERABILITY DATE .....	30
7.5 COUNTRY-SPECIFIC PRICING.....	30
CLAUSE 8: FULL DISCLOSURE.....	31
8.1 SUPPORTING FILE INDEX.....	31
CLAUSE 9: AUDIT RELATED ITEMS.....	32
AUDITORS' INFORMATION AND ATTESTATION LETTER .....	32
APPENDIX A: PRICE QUOTES .....	35

# Abstract

This document contains the methodology and results of the TPC Benchmark™ H (TPC-H) test conducted on the Cisco UCS C460 M4 Rack-Mount Server, in conformance with the requirements of the TPC-H Standard Specification, Revision 2.17.1. The operating system used for the benchmark was Windows Server 2016 Standard Edition and database software used for the benchmark was Microsoft SQL Server 2016 Enterprise Edition.

## Cisco UCS C460 M4 Server

Company Name	System Name	Database Software	Operating System
Cisco Systems, Inc	Cisco UCS C460 M4 Server	Microsoft SQL Server 2016 Enterprise Edition	Windows Server 2016 Standard Edition

## TPC Benchmark© H Metrics

Total System Cost	TPC-H Throughput	Price/Performance	Availability Date
\$960,172 USD	1,115,298.0 QphH@10,000GB	\$0.87 USD	November 28, 2016



# Cisco UCS C460 M4 Server

TPC-H Rev. 2.17.1  
 TPC-Pricing Rev. 2.0

Report Date: 28-Nov-2016

Total System Cost

Composite Query per Hour Metric

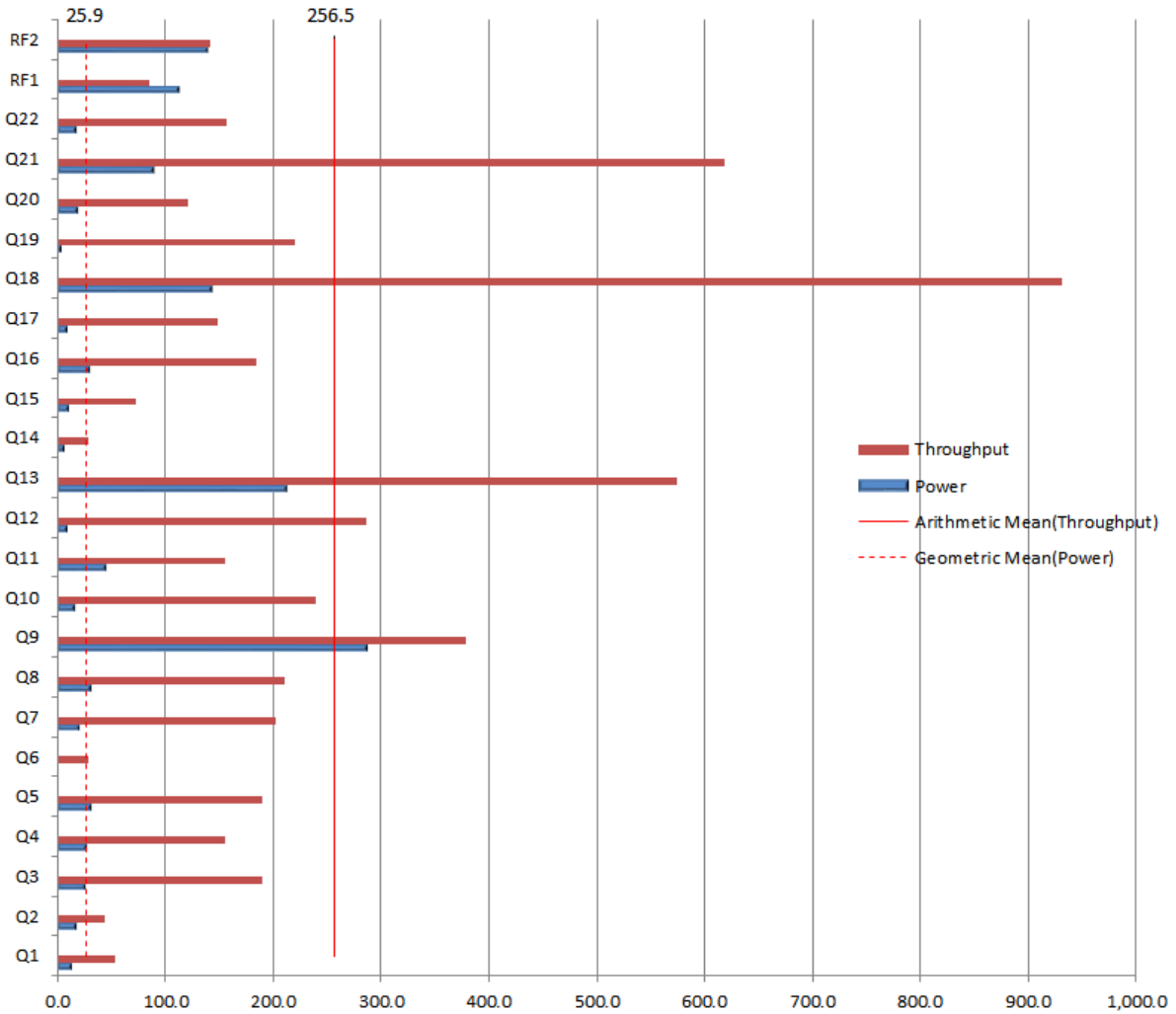
Price / Performance

**\$960,172 USD**

**1,115,298.0**  
 QphH@10,000GB

**\$0.87 USD**  
 \$ / QphH@10,000GB

Database Size	Database Manager	Operating System	Other Software	Availability Date
<b>10,000GB</b>	<b>Microsoft SQL Server 2016 Enterprise Edition</b>	<b>Windows Server 2016 Standard Edition</b>		<b>28-Nov-2016</b>



Database Load Time = 7h 56m 49s	<b>Storage Redundancy Level</b>	
Load Includes Backup: Y	Base Tables and Auxiliary Data Structures	0
Total Data Storage / Database Size = 3.69	DBMS Temporary Space	0
Percentage Memory / Database Size = 61.4%	OS and DBMS Software	1

<b>System Configuration:</b>	<b>Cisco UCS C460 M4 Server</b>
Processors/Cores/Threads/Model:	4/96/192 Intel(R) Xeon(R) CPU E7-8890 v4 Processor (2.20 GHz, 60MB cache, 165W)
Memory:	6 TB
Storage:	8 X 1.6TB 2.5 inch Ent. Performance 6GSATA SSD (3X endurance) 4 X UCS Rack PCIe Storage 6400GB SanDisk SX350 Medium Endurance
Table Storage:	37.80 TB

Cisco		Cisco UCS C460 M4 Server			TPC-H Rev. 2.17.1			
					TPC-Pricing Rev. 2.0			
Report Date: 28-Nov-2016								
Description	Part Number	Brand	Source	Unit Price	Qty	Extended Price	3 Year Maint. Price	
<b>Server Hardware</b>								
UCS C460 M4 base chassis w/o CPU/DIMM/HDD	UCSC-C460-M4	Cisco	1	16,500.00	1	\$16,500.00		
2.2 GHz E7-8890 v4/165W 24C/60M Cache/DDR4 1866MHz	UCS-CPU-E78890E	Cisco	1	21,000.00	4	\$84,000.00		
UCS C460 M4 DDR4 Memory Riser with 12 DIMM slots	UCSC-MRBD2-12	Cisco	1	800.00	8	\$6,400.00		
Riser card with 5 PCIe slots	UCSC-PCIE-RSR-05	Cisco	1	500.00	1	\$500.00		
1400W V2 AC Power Supply (200 - 240V) 2U & 4U C Series	UCSC-PSU2V2-1400W	Cisco	1	800.00	4	\$3,200.00		
Power Cord, 200/240V 6A North America	CAB-N5K6A-NA	Cisco	1	0.00	4	\$0.00		
Rail Kit for UCS C460 M4	UCSC-RAIL-4U	Cisco	1	0.00	1	\$0.00		
Bracket and Supercap cable for C460 M4 and 12 drive RAID	UCSC-BRCKT2-C460	Cisco	1	0.00	1	\$0.00		
CPU Heat Sink for UCS C460 M4 Rack Server	UCSC-HS-01-EX	Cisco	1	0.00	4	\$0.00		
Cisco 12G SAS Modular Raid Controller (12 port)	UCSC-MRAIDC460	Cisco	1	1,688.00	1	\$1,688.00		
Cisco ONE Data Center Compute Opt Out Option	C1UCS-OPT-OUT	Cisco	1	0.00	1	\$0.00		
Cisco 12Gbps SAS 4GB FBWC Cache module (Raid 0/1/5/6)	UCSC-MRAID12G-4GB	Cisco	1	1,967.00	1	\$1,967.00		
1.6TB 2.5 inch Ent. Performance 6GSATA SSD(3X endurance)	UCS-SD16TB12S3-EP	Cisco	1	7,875.00	8	\$63,000.00		
64GB DDR4-2133-MHz LRDIMM/PC4-17000/quad rank/x4/1.2v	UCS-ML-1X644RU-G	Cisco	1	3,370.00	96	\$323,520.00		
Cisco M4 - v3 CPU asset tab ID label (Auto-Expand)	UCS-M4-V3-LBL	Cisco	1	0.00	1	\$0.00		
Full Height PCIe slot filler for C Series	UCSC-PCIE-FLR-F	Cisco	1	0.00	1	\$0.00		
PCIe Module Filler Panel for UCS C460 M4	UCSC-PCIE-RSR-FLR	Cisco	1	0.00	1	\$0.00		
UCS 2.5 inch HDD blanking panel	N20-BBLKD	Cisco	1	0.00	4	\$0.00		
UCS Rack PCIe Storage 6400GB SanDisk SX350 Medium Endurance	UCSC-F-S64002	Cisco	1	70,533.00	4	\$282,132.00		
Cisco R42610 standard rack, w/side panels	RACK-UCS2	Cisco	1	3,429.00	1	\$3,429.00		
UCS PSS 24X7X4 OS,UCS C460 M4 Server	CON-PSJ7-C460M4	Cisco	1	3,161.31	1		\$3,161.31	
<b>Server Peripherals</b>								
IOGEARGKM513 Spill Proof Keyboard & Mouse Combo	GKM513	Provantage	3	16.47	1	\$16.47		
ASUS 19.5" VS207D-P Widescreen LED 1600x900 VGA	VS207D-P	Provantage	3	74.15	1	\$74.15		
					Subtotal	\$786,427	\$3,161.31	
Large Purchase Discount <sup>1</sup>	61% for hardware and 35% for services	Cisco	1			-\$479,665	-\$1,106.46	
				Hardware Subtotal		\$306,762	\$2,054.85	
<b>Software</b>								
SQL Server 2016 Enterprise Edition	NA	Microsoft	2	13,472.50	48	\$646,680.00		
Windows Server 2016 Standard Edition (2 Core Pack)	NA	Microsoft	2	92.00	48	\$4,416.00		
Microsoft Problem Resolution Services	NA	Microsoft	2	259.00	1		\$259.00	
					Software Subtotal	\$651,096.00	\$259.00	
					Total	\$957,857.66	\$2,313.85	
Pricing: 1=Cisco 2=Microsoft 3=Provantage;						<b>Three-Year Cost of Ownership: \$960,172 USD</b>		
Audited by Francois Raab from InfoSizing. (sizing.com)						<b>QpH: 1,115,298.0</b>		
All discounts are based on US list prices and for similar quantities and configurations. The discounts are based on the overall specific components pricing from respective vendors in this single quotation. Discounts for similarly sized configurations will be similar to those quoted here, but may vary based on the components in the configuration.						<b>\$ / QpH: \$0.87 USD</b>		
Prices used in TPC benchmarks reflect the actual prices a customer would pay for a one-time purchase of the stated components. Individually negotiated discounts are not permitted. Special prices based on assumptions about past or future purchases are not permitted. All discounts reflect standard pricing policies for the listed components. For complete details, see the pricing sections of the TPC benchmark specifications. If you find that the stated prices are not available according to these terms, please inform at pricing@tpc.org. Thank you.								



**Cisco****Cisco UCS C460 M4 Server****TPC-H Rev. 2.17.1****TPC-Pricing Rev. 2.0****Report Date: 28-Nov-2016****Measurement Results**

Database Scaling (SF/Size)	10,000
Total Data Storage/Database Size	3.69
Percentage Memory/Database Size	61.4
Start of Database Load Time	11/05/2016 12:36:34
End of Database Load Time	11/05/2016 20:33:22
Database Load Time	00d 07h 56m 49s
Query Streams for Throughput Test (S)	9
TPC-H Power	1,391,173.9
TPC-H Throughput	894,129.5
TPC-H Composite	1,115,298.0
Total System Price Over 3 Years	\$960,172
TPC-H Price/Performance Metric (\$/QpH@10000GB)	\$0.87

**Measurement Interval**

Measurement Interval in Throughput Test (Ts)	7,972
--	-------

Duration of stream execution:

Power Run	Seed	Query Start Time	Duration	RF1 Start Time	RF2 Start Time
		Query End Time	(sec)	RF1 End Time	RF2 End Time
	1105203322	2016-11-05 21:47:05	1,072	2016-11-05 21:45:12	2016-11-05 22:04:57
		2016-11-05 22:04:57		2016-11-05 21:47:04	2016-11-05 22:07:16

Throughput Stream	Seed	Query Start Time	Duration	RF1 Start Time	RF2 Start Time
		Query End Time	(sec)	RF1 End Time	RF2 End Time
1	1105203323	2016-11-05 22:07:15	5,960	2016-11-05 23:46:34	2016-11-05 23:48:12
		2016-11-05 23:46:35		2016-11-05 23:48:12	2016-11-05 23:50:30
2	1105203324	2016-11-05 22:07:15	5,325	2016-11-05 23:50:31	2016-11-05 23:51:54
		2016-11-05 23:36:00		2016-11-05 23:51:54	2016-11-05 23:54:09
3	1105203325	2016-11-05 22:07:15	4,899	2016-11-05 23:54:09	2016-11-05 23:55:29
		2016-11-05 23:28:54		2016-11-05 23:55:29	2016-11-05 23:57:46
4	1105203326	2016-11-05 22:07:15	5,937	2016-11-05 23:57:47	2016-11-05 23:59:05
		2016-11-05 23:46:12		2016-11-05 23:59:05	2016-11-06 00:01:27
5	1105203327	2016-11-05 22:07:15	5,767	2016-11-06 00:01:27	2016-11-06 00:02:45
		2016-11-05 23:43:22		2016-11-06 00:02:45	2016-11-06 00:05:06
6	1105203328	2016-11-05 22:07:15	5,716	2016-11-06 00:05:06	2016-11-06 00:06:40
		2016-11-05 23:42:31		2016-11-06 00:06:40	2016-11-06 00:09:10
7	1105203329	2016-11-05 22:07:15	5,906	2016-11-06 00:09:11	2016-11-06 00:10:28
		2016-11-05 23:45:41		2016-11-06 00:10:28	2016-11-06 00:12:48
8	1105203330	2016-11-05 22:07:15	5,850	2016-11-06 00:12:49	2016-11-06 00:14:04
		2016-11-05 23:44:45		2016-11-06 00:14:04	2016-11-06 00:16:29
9	1105203331	2016-11-05 22:07:15	5,432	2016-11-06 00:16:30	2016-11-06 00:17:46
		2016-11-05 23:37:47		2016-11-06 00:17:46	2016-11-06 00:20:07

**Cisco****Cisco UCS C460 M4  
Server****TPC-H Rev. 2.17.1  
TPC-Pricing Rev. 2.0****Report Date: 28-Nov-2016****TPC-H Timing Intervals (in seconds)**

Stream ID	Q1	Q2	Q3	Q4	Q5	Q6	Q7	Q8	Q9	Q10	Q11	Q12
0	13.2	18.2	26.4	27.8	31.8	0.8	20.4	31.1	286.8	16.8	45.7	9.2
1	23.8	40.7	171.0	29.4	225.4	9.9	438.5	181.2	181.7	251.3	148.2	443.9
2	30.7	62.4	218.7	114.6	249.3	22.8	136.9	287.1	284.3	252.1	145.7	374.9
3	37.7	49.7	154.0	131.0	188.7	4.6	239.0	190.1	309.1	264.7	164.2	400.8
4	20.9	50.8	47.6	165.3	191.8	56.7	141.8	248.0	455.4	270.5	136.8	414.7
5	37.5	47.5	182.1	327.0	182.8	79.2	147.3	170.4	311.6	173.9	239.5	361.5
6	33.0	39.5	167.2	125.7	220.0	51.8	329.2	378.2	499.0	202.1	204.9	570.3
7	274.4	37.2	337.0	167.7	217.4	22.5	206.0	232.4	501.6	254.3	126.4	55.3
8	32.0	38.6	203.3	299.1	215.9	29.0	160.7	198.1	660.2	451.2	115.1	132.4
9	30.3	47.4	388.7	167.6	175.5	5.3	198.4	185.8	299.4	258.3	220.3	101.6
Minimum	13.2	18.2	26.4	27.8	31.8	0.8	20.4	31.1	181.7	16.8	45.7	9.2
Average	53.4	43.2	189.6	155.5	189.9	28.3	201.8	210.2	378.9	239.5	154.7	286.5
Maximum	274.4	62.4	388.7	327.0	249.3	79.2	438.5	378.2	660.2	451.2	239.5	570.3

Stream ID	Q13	Q14	Q15	Q16	Q17	Q18	Q19	Q20	Q21	Q22	RF1	RF2
0	212.0	7.1	11.1	30.3	9.6	143.3	4.4	19.0	88.9	17.5	112.5	138.4
1	795.7	21.7	90.4	218.9	333.4	1,223.1	261.6	121.3	710.8	36.8	97.3	138.0
2	435.5	39.1	29.8	243.1	83.0	866.2	211.7	164.1	810.1	261.4	82.9	135.3
3	510.9	33.8	127.9	267.3	65.2	730.3	301.4	132.3	459.6	135.7	79.8	137.0
4	584.3	33.1	58.2	97.6	88.7	1,429.9	520.7	38.1	767.7	116.6	78.4	141.4
5	488.8	31.1	99.7	281.3	96.5	1,245.2	168.1	165.9	768.8	160.6	77.7	141.2
6	637.5	35.9	79.0	220.3	139.3	658.6	34.5	158.1	666.6	263.7	93.3	150.6
7	741.1	17.9	30.4	149.3	240.7	1,286.0	284.4	164.0	418.7	140.8	77.2	140.5
8	518.9	33.4	99.9	167.7	226.3	856.9	203.3	143.9	762.4	300.6	75.1	145.4
9	814.6	34.3	94.1	168.7	198.1	869.6	207.1	100.6	725.2	139.8	76.2	141.2
Minimum	212.0	7.1	11.1	30.3	9.6	143.3	4.4	19.0	88.9	17.5	75.1	135.3
Average	573.9	28.7	72.1	184.5	148.1	930.9	219.7	120.7	617.9	157.4	85.0	140.9
Maximum	814.6	39.1	127.9	281.3	333.4	1,429.9	520.7	165.9	810.1	300.6	112.5	150.6

# Preface

## TPC Benchmark™ H Overview

The TPC Benchmark™ H (TPC-H) is a decision support benchmark. It consists of a suite of business oriented ad-hoc queries and concurrent data modifications. The queries and the data populating the database have been chosen to have broad industry-wide relevance while maintaining a sufficient degree of ease of implementation. This benchmark illustrates decision support systems that

- Examine large volumes of data;
- Execute queries with a high degree of complexity;
- Give answers to critical business questions.

TPC-H evaluates the performance of various decision support systems by the execution of sets of queries against a standard database under controlled conditions. The TPC-H queries:

- Give answers to real-world business questions;
- Simulate generated ad-hoc queries (e.g., via a point and click GUI interface);
- Are far more complex than most OLTP transactions;
- Include a rich breadth of operators and selectivity constraints;
- Generate intensive activity on the part of the database server component of the system under test;
- Are executed against a database complying to specific population and scaling requirements;
- Are implemented with constraints derived from staying closely synchronized with an on-line production database.

The TPC-H operations are modeled as follows:

- The database is continuously available 24 hours a day, 7 days a week, for ad-hoc queries from multiple end users and data modifications against all tables, except possibly during infrequent (e.g., once a month) maintenance sessions;
- The TPC-H database tracks, possibly with some delay, the state of the OLTP database through on-going refresh functions which batch together a number of modifications impacting some part of the decision support database;
- Due to the world-wide nature of the business data stored in the TPC-H database, the queries and the refresh functions July be executed against the database at any time, especially in relation to each other. In addition, this mix of queries and refresh functions is subject to specific ACIDity requirements, since queries and refresh functions July execute concurrently;
- To achieve the optimal compromise between performance and operational requirements, the database administrator can set, once and for all, the locking levels and the concurrent scheduling rules for queries and refresh functions.

The performance metric reported by TPC-H is called the TPC-H Composite Query-per-Hour Performance Metric (QphH@Size), and reflects multiple aspects of the capability of the system to process queries. These aspects include the selected database size against which the queries are executed, the query processing power when queries are submitted by a single stream and the query throughput when queries are submitted by multiple concurrent users. The TPC-H Price/Performance metric is expressed as \$/QphH@Size. To be compliant with the TPC-H standard, all references to TPC-H

results for a given configuration must include all required reporting components. The TPC believes that comparisons of TPC-H results measured against different database sizes are misleading and discourages such comparisons.

The TPC-H database must be implemented using a commercially available database management system (DBMS) and the queries executed via an interface using dynamic SQL. The specification provides for variants of SQL, as implementers are not required to have implemented a specific SQL standard in full.

TPC-H uses terminology and metrics that are similar to other benchmarks, originated by the TPC and others. Such similarity in terminology does not in any way imply that TPC-H results are comparable to other benchmarks. The only benchmark results comparable to TPC-H are other TPC-H results compliant with the same revision.

Despite the fact that this benchmark offers a rich environment representative of many decision support systems, this benchmark does not reflect the entire range of decision support requirements. In addition, the extent to which a customer can achieve the results reported by a vendor is highly dependent on how closely TPC-H approximates the customer application. The relative performance of systems derived from this benchmark does not necessarily hold for other workloads or environments. Extrapolations to any other environment are not recommended.

Benchmark results are highly dependent upon workload, specific application requirements, and systems design and implementation. Relative system performance will vary as a result of these and other factors. Therefore, TPC-H should not be used as a substitute for a specific customer application benchmarking when critical capacity planning and/or product evaluation decisions are contemplated.

Further information is available at [www.tpc.org](http://www.tpc.org)

# General Items

## 0.1 Test Sponsor

*A statement identifying the benchmark sponsor(s) and other participating companies must be provided.*

This benchmark was sponsored by Cisco Systems, Inc.

## 0.2 Parameter Settings

*Settings must be provided for all customer-tunable parameters and options which have been changed from the defaults found in actual products, including by not limited to:*

- *Database Tuning Options*
- *Optimizer/Query execution options*
- *Query processing tool/language configuration parameters*
- *Recovery/commit options*
- *Consistency/locking options*
- *Operating system and configuration parameters*
- *Configuration parameters and options for any other software component incorporated into the pricing structure*
- *Compiler optimization options*

*This requirement can be satisfied by providing a full list of all parameters and options, as long as all those which have been modified from their default values have been clearly identified and these parameters and options are only set once.*

The Supporting File Archive contains the Operating System and DBMS parameters used in this benchmark.

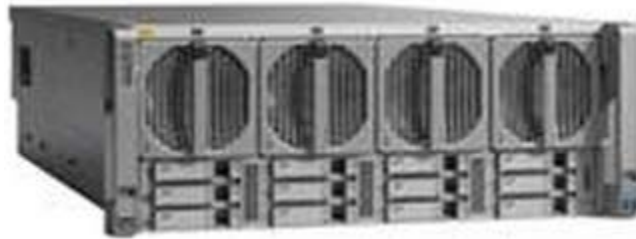
## 0.3 Configuration Diagrams

*Diagrams of both measured and priced configurations must be provided, accompanied by a description of the differences. This includes, but is not limited to:*

- *Number and type of processors*
- *Size of allocated memory, and any specific mapping/partitioning of memory unique to the test.*
- *Number and type of disk units (and controllers, if applicable).*
- *Number of channels or bus connections to disk units, including their protocol type.*
- *Number of LAN (e.g. Ethernet) Connections, including routers, workstations, terminals, etc., that were physically used in the test or are incorporated into the pricing structure.*
- *Type and the run-time execution location of software components (e.g., DBMS, query processing tools/languages, middle-ware components, software drivers, etc.).*

The Cisco UCS C460 M4 server features:

- Intel Xeon E7-8800 v2/v3/v4, E7-4800 v2/v3/v4, or E7-2800 v2 series processor family CPUs
- Four rack-unit (4RU) chassis
- Up to 6 terabytes (TB) of double-data-rate 3 (DDR3) memory or double-data-rate 4 (DDR4) memory in 96 DIMM slots
- Up to 12 Small Form Factor (SFF) hot-pluggable SAS or SATA disk drives
- Abundant I/O capability with 10 PCI Express (PCIe) Generation 3 (Gen 3) slots supporting the Cisco UCS virtual interface cards (VICs). An internal slot is reserved for a RAID controller card
- Two Gigabit Ethernet LAN-on-motherboard (LOM) ports, two 10-Gigabit Ethernet ports, and a dedicated out-of-band (OOB) management port that provides additional networking options



Both the measured and priced configurations are same and consist of a Cisco UCS C460 M4 Rack-Mount Server with:

- 4 x Intel Xeon E7-8890 v4 Processor (2.2 GHz, 60MB cache, 165W)
- 6 TB of memory
- 4 x UCS Rack PCIe Storage 6400GB SanDisk SX350 Medium Endurance
- 1 x Cisco 12G SAS Modular Raid Controller for C460
  - 8 x 1.6TB 2.5 inch Ent. Performance 6GSATA SSD (3X endurance)

# Clause 1: Logical Database Design

## 1.1 Database Definition Statements

*Listings must be provided for all table definition statements and all other statements used to set up the test and qualification databases*

The Supporting File Archive contains the table definitions and all other statements used to set up the test and qualification databases.

## 1.2 Physical Organization

*The physical organization of tables and indices, within the test and qualification databases, must be disclosed. If the column ordering of any table is different from that specified in Clause 1.4, it must be noted.*

No column reordering was used.

## 1.3 Horizontal Partitioning

*Horizontal partitioning of tables and rows in the test and qualification databases (see Clause 1.5.4) must be disclosed.*

Horizontal partitioning is used on LINEITEM and ORDERS tables and the partitioning columns are L\_SHIPDATE and O\_ORDERDATE. The partition granularity is by week.

## 1.4 Replication

*Any replication of physical objects must be disclosed and must conform to the requirements of Clause 1.5.6.*

No replication was used.

# Clause 2: Queries and Refresh Functions Related Items

## 2.1 Query Language

*The query language used to implement the queries must be identified.*

SQL was the query language used to implement the queries.

## 2.2 Verifying Method of Random Number Generation

*The method of verification for the random number generation must be described unless the supplied DBGEN and QGEN were used.*

TPC-supplied DBGEN version 2.17.0 and QGEN version 2.17.0 were used.

## 2.3 Generating Values for Substitution Parameters

*The method used to generate values for substitution parameters must be disclosed. If QGEN is not used for this purpose, then the source code of any non-commercial tool used must be disclosed. If QGEN is used, the version number, release number, modification number and patch level of QGEN must be disclosed.*

TPC supplied QGEN version 2.17.0 was used to generate the substitution parameters.

## 2.4 Query Text and Output Data from Qualification Database

*The executable query text used for query validation must be disclosed along with the corresponding output data generated during the execution of the query text against the qualification database. If minor modifications (see Clause 2.2.3) have been applied to any functional query definitions or approved variants in order to obtain executable query text, these modifications must be disclosed and justified. The justification for a particular minor query modification can apply collectively to all queries for which it has been used. The output data for the power and throughput tests must be made available electronically upon request.*

Supporting Files Archive contains the actual query text and query output. Following are the modifications to the query.

- In Q1, Q4, Q5, Q6, Q10, Q12, Q14, Q15 and Q20, the “dateadd” function is used to perform date arithmetic.
- In Q7, Q8 and Q9, the “datepart” function is used to extract part of a date (e.g., datepart(yy,...)).
- In Q2, Q3, Q10, Q18 and Q21, the “top” function is used to restrict the number of output rows.
- The “COUNT\_BIG” function is used in place of “COUNT” in Q1.

## 2.5 Query Substitution Parameters and Seeds Used

*All the query substitution parameters used during the performance test must be disclosed in tabular format, along with the seeds used to generate these parameters.*

Supporting Files Archive contains the query substitution parameters and seed used.



## 2.6 Isolation Level

*The isolation level used to run the queries must be disclosed. If the isolation level does not map closely to one of the isolation levels defined in Clause 3.4, additional descriptive detail must be provided.*

The queries and transactions were run with “Read committed” isolation level.

## 2.7 Source Code of Refresh Functions

*The details of how the refresh functions were implemented must be disclosed (including source code of any non-commercial program used).*

Supporting Files Archive contains the Source Code of refresh functions.

# Clause 3: Database System Properties

## 3.1 ACID Properties

*The ACID (Atomicity, Consistency, Isolation, and Durability) properties of transaction processing systems must be supported by the system under test during the timed portion of this benchmark. Since TPC-H is not a transaction processing benchmark, the ACID properties must be evaluated outside the timed portion of the test.*

All ACID tests were conducted according to specification. The Supporting Files Archive contains the source code of the ACID test scripts.

## 3.2 Atomicity Requirements

*The results of the ACID tests must be disclosed along with a description of how the ACID requirements were met. This includes disclosing the code written to implement the ACID Transaction and Query.*

### 3.2.1 Atomicity of the Completed Transactions

*Perform the ACID Transaction for a randomly selected set of input data and verify that the appropriate rows have been changed in the ORDER, LINEITEM, and HISTORY tables.*

The following steps were performed to verify the Atomicity of completed transactions.

1. The total price from the ORDER table and the extended price from the LINEITEM table were retrieved for a randomly selected order key.
2. The ACID Transaction was performed using the order key from step 1.
3. The ACID Transaction committed.
4. The total price from the ORDER table and the extended price from the LINEITEM table were retrieved for the same order key. It was verified that the appropriate rows had been changed.

### 3.2.2 Atomicity of Aborted Transactions

*Perform the ACID transaction for a randomly selected set of input data, submitting a ROLLBACK of the transaction for the COMMIT of the transaction. Verify that the appropriate rows have not been changed in the ORDER, LINEITEM, and HISTORY tables.*

The following steps were performed to verify the Atomicity of the aborted ACID transaction:

1. The total price from the ORDER table and the extended price from the LINEITEM table were retrieved for a randomly selected order key.
2. The ACID Transaction was performed using the order key from step 1. The transaction was stopped prior to the commit.
3. The ACID Transaction was ROLLED BACK.
4. The total price from the ORDER table and the extended price from the LINEITEM table were retrieved for the same order key used in steps 1 and 2. It was verified that the appropriate rows had not been changed.

## 3.3 Consistency Requirements

*Consistency is the property of the application that requires any execution of transactions to take the database from one consistent state to another.*

*A consistent state for the TPC-H database is defined to exist when:*

$$O\_TOTALPRICE = SUM(L\_EXTENDEDPRICE - L\_DISCOUNT) * (1 + L\_TAX)$$
*For each ORDER and LINEITEM defined by (O\\_ORDERKEY = L\\_ORDERKEY)*

### 3.3.1 Consistency Test

*Verify that ORDER and LINEITEM tables are initially consistent as defined in Clause 3.3.2.1, based upon a random sample of at least 10 distinct values of O\_ORDERKEY.*

The following steps were performed to verify consistency:

1. The consistency of the ORDER and LINEITEM tables was verified based on a sample of O\_ORDERKEYS.
2. At least 100 ACID Transactions were submitted.
3. The consistency of the ORDER and LINEITEM tables was re-verified.

The Consistency test was performed as part of the Durability test explained in section 3.5.

## 3.4 Isolation Requirements

*Operations of concurrent transactions must yield results which are indistinguishable from the results which would be obtained by forcing each transaction to be serially executed to completion in some order.*

### 3.4.1 Isolation Test 1 - Read-Write Conflict with Commit

*Demonstrate isolation for the read-write conflict of a read-write transaction and a read-only transaction when the read-write transaction is committed.*

The following steps were performed to satisfy the test of isolation for a read-only and a read-write committed transaction:

1. An ACID Transaction was started for a randomly selected O\_KEY, L\_KEY and DELTA. The ACID Transaction was suspended prior to Commit.
2. An ACID query was started for the same O\_KEY used in step 1. The ACID query blocked and did not see any uncommitted changes made by the ACID Transaction.
3. The ACID Transaction was resumed and committed.
4. The ACID query completed. It returned the data as committed by the ACID Transaction.

### 3.4.2 Isolation Test 2 - Read-Write Conflict with Rollback

*Demonstrate isolation for the read-write conflict of a read-write transaction and a read-only transaction when the read-write transaction is rolled back.*

The following steps were performed to satisfy the test of isolation for read-only and a rolled back read-write transaction:

1. An ACID transaction was started for a randomly selected O\_KEY, L\_KEY and DELTA. The ACID Transaction was suspended prior to Rollback.
2. An ACID query was started for the same O\_KEY used in step 1. The ACID query did not see any uncommitted changes made by the ACID Transaction.
3. The ACID Transaction was ROLLED BACK.
4. The ACID query completed.

### 3.4.3 Isolation Test 3 - Write-Write Conflict with Commit

*Demonstrate isolation for the write-write conflict of two update transactions when the first transaction is committed.*

The following steps were performed to verify isolation of two update transactions:

1. An ACID Transaction T1 was started for a randomly selected O\_KEY, L\_KEY and DELTA. The ACID transaction T1 was suspended prior to Commit.
2. Another ACID Transaction T2 was started using the same O\_KEY and L\_KEY and a randomly selected DELTA.
3. T2 waited.
4. The ACID transaction T1 was allowed to Commit and T2 completed.
5. It was verified that:

$$T2.L\_EXTENDEDPRICE = T1.L\_EXTENDEDPRICE \\ + (DELTA1 * (T1.L\_EXTENDEDPRICE / T1.L\_QUANTITY))$$

#### 3.4.4 Isolation Test 4 - Write-Write Conflict with Rollback

*Demonstrate isolation for the write-write conflict of two update transactions when the first transaction is rolled back.*

The following steps were performed to verify the isolation of two update transactions after the first one is rolled back:

1. An ACID Transaction T1 was started for a randomly selected O\_KEY, L\_KEY and DELTA. The ACID Transaction T1 was suspended prior to Rollback.
2. Another ACID Transaction T2 was started using the same O\_KEY and L\_KEY used in step 1 and a randomly selected DELTA.
3. T2 waited.
4. T1 was allowed to ROLLBACK and T2 completed.
5. It was verified that  $T2.L\_EXTENDEDPRICE = T1.L\_EXTENDEDPRICE$ .

#### 3.4.5 Isolation Test 5 – Concurrent Read and Write Transactions on Different Tables

*Demonstrate the ability of read and write transactions affecting different database tables to make progress concurrently.*

The following steps were performed to verify isolation of concurrent read and write transactions on different tables:

1. An ACID Transaction T1 for a randomly selected O\_KEY, L\_KEY and DELTA. The ACID Transaction T1 was suspended prior to Commit.
2. Another ACID Transaction T2 was started using random values for PS\_PARTKEY and PS\_SUPPKEY.
3. T2 completed.
4. T1 completed and the appropriate rows in the ORDER, LINEITEM and HISTORY tables were changed.

#### 3.4.6 Isolation Test 6 – Update Transactions during Continuous Read-Only Query Stream

*Demonstrate the continuous submission of arbitrary (read-only) queries against one or more tables of the database does not indefinitely delay update transactions affecting those tables from making progress.*

The following steps were performed to verify isolation of update transaction during continuous read-only query:

1. An ACID Transaction T1 was started, executing Q1 against the qualification database. The substitution parameter was chosen from the interval [0..2159] so that the query ran for a sufficient amount of time.
2. Before T1 completed, an ACID Transaction T2 was started using randomly selected values of O\_KEY, L\_KEY and DELTA.
3. T2 completed before T1 completed.
4. It was verified that the appropriate rows in the ORDER, LINEITEM and HISTORY tables were changed.

### 3.5 Durability Requirements

*The tested system must guarantee durability: the ability to preserve the effects of committed transactions and insure database consistency after recovery from any one of the failures listed in Clause 3.5.2.*

#### 3.5.1 Permanent Unrecoverable Failure of Any Durable Medium

*Guarantee the database and committed updates are preserved across a permanent irrecoverable failure of any single durable medium containing TPC-H database tables or recovery log tables.*

The database files were equally spread across four 6400GB SanDisk SX350 drives. The database log files were stored on a RAID-10 volume of four 1.6TB 6Gbps SATA SSD disk drives.

*Guarantee the database and committed updates are preserved across a permanent irrecoverable failure of any single durable medium containing TPC-H database tables or recovery log tables.*

A backup of the database was taken. The tests were conducted on the qualification database.

The steps performed to demonstrate that committed updates are preserved across a permanent irrecoverable failure of disk drive containing data tables:

1. The database was backed up.
2. The consistency of the ORDERS and LINEITEM tables were verified.
3. Ten streams of ACID transactions were started. Each stream executed a minimum of 100 transactions.
4. While the test was running, one of the 6400GB SanDisk SX350 was detached (making it logically unavailable).
5. A checkpoint was issued to force a failure.
6. Database error log recorded the failure.
7. The running ACID transactions were stopped.
8. The Database log was backed up.
9. The disk drive was reattached.
10. The database was dropped and restored.
11. When database restore completed, issued a command to apply the backed up log file.
12. The counts in the history table and success files were compared and verified, and the consistency of the ORDERS and LINEITEM tables was verified.

Testing the permanent irrecoverable failure of disk drive containing database log file was tested as part of the system crash test (see section 3.5.2).

### 3.5.2 Loss of Log and System Crash Test

*Guarantee the database and committed updates are preserved across an instantaneous interruption (system crash/system hang) in processing which requires the system to reboot to recover.*

1. The consistency of the ORDERS and LINEITEM tables were verified.
2. Ten streams of ACID transactions were started. Each stream executed a minimum of 100 transactions.
3. While the test was running, one of the disks from the database log RAID-1 array was physically removed.
4. The database log RAID-1 volume went to a degraded state.
5. The tests were still running without any problem even after the log disk was in a degraded state.
6. While the streams of ACID transactions were still running, the system was powered off.
7. When power was restored, the system booted and the database was restarted.
8. The database went through a recovery period.
9. The counts in the history table and success files were compared and verified, and the consistency of the ORDERS and LINEITEM tables was verified.

### 3.5.3 Memory Failure

*Guarantee the database and committed updates are preserved across failure of all or part of memory (loss of contents).*

See section 3.5.2

# Clause 4: Scaling and Database Population

## 4.1 Initial Cardinality of Tables

The cardinality (e.g., the number of rows) of each table of the test database, as it existed at the completion of the database load (see clause 4.2.5) must be disclosed.

Table 4.1 lists the TPC Benchmark H defined tables and the row count for each table as they existed upon completion of the build.

**Table 4. 1: Initial Number of Rows**

Table Name	Row Count
Region	5
Nation	25
Supplier	100,000,000
Customer	1,500,000,000
Part	2,000,000,000
Partsupp	8,000,000,000
Orders	15,000,000,000
Lineitem	59,999,994,267

## 4.2 Distribution of Tables and Logs Across Media

The distribution of tables and logs across all media must be explicitly described for the tested and priced systems.

The storage system consisted of:

- 4 x UCS Rack PCIe Storage 6400GB SanDisk SX350 Medium Endurance
- 1 x Cisco 12G SAS Modular Raid Controller for C460
  - 8 X 1.6TB 2.5 inch Ent. Performance 6GSATA SSD (3X endurance)

The database tables were hosted on four 6400GB SanDisk SX350 drives. The temporary files were distributed across the four 6400GB SanDisk SX350 drives, where the data files were also placed. The database log files resided on a RAID-10 array of four 1.6TB SATA SSD drives. The database backup was hosted on another RAID-0 array made of four 1.6TB SATA SSD drives. A detailed description of distribution of database filegroups and log can be found in Table 4.2.

**Table 4.2: Disk Array to Logical Drive Mapping**

Logical Allocation	Drive Size (GB)	Drive Type	RAID Format	Disk Group Spindles	Total Space (GB)	Drive Letter/Mount Point
OS and DB Software	1638.4	1.6TB 2.5 inch Ent. Performance 6GSATA SSD	10	4	150	C:
Log (Data and Tempdb)					2828	D:
Backup	1638.4	1.6TB 2.5 inch Ent. Performance 6GSATA SSD	0	4	5957	F:
Data Files and TempDB	5960.34	UCS Rack PCIe Storage 6400GB SanDisk SX350	No RAID	-	5960	C:\TPCH_Mount\FIO1
Data Files and TempDB	5960.34	UCS Rack PCIe Storage 6400GB SanDisk SX350	No RAID	-	5960	C:\TPCH_Mount\FIO2
Data Files and TempDB	5960.34	UCS Rack PCIe Storage 6400GB SanDisk SX350	No RAID	-	5960	C:\TPCH_Mount\FIO3
Data Files and TempDB	5960.34	UCS Rack PCIe Storage 6400GB SanDisk SX350	No RAID	-	5960	C:\TPCH_Mount\FIO4

### 4.3 Mapping of Database Partitions/Replications

*The mapping of database partitions/replications must be explicitly described.*

Horizontal partitioning is used on LINEITEM and ORDERS tables and the partitioning columns are L\_SHIPDATE and O\_ORDERDATE. The partition granularity is by week.

### 4.4 Implementation of RAID

*Implementations July use some form of RAID to ensure high availability. If used for data, auxiliary storage (e.g. indexes) or temporary space, the level of RAID used must be disclosed for each device.*

The database tables were hosted on four 6400GB SanDisk SX350 drives. The temporary files were hosted on the same drives as the database tables. The database log files resided on a RAID-10 array of four 1.6TB SATA SSD drives. The database backup was hosted on another RAID-0 array made of four 1.6TB SATA SSD drives.

### 4.5 DBGEN Modifications

*The version number, release number, modification number, and patch level of DBGEN must be disclosed. Any modifications to the DBGEN (see Clause 4.2.1) source code must be disclosed. In the event that a program other than DBGEN was used to populate the database, it must be disclosed in its entirety.*

DBGEN version 2.17.0 was used, no modifications were made.

## 4.6 Database Load time

*The database load time for the test database (see clause 4.3) must be disclosed.*

The database load time was 7 hours 56 minutes and 49 seconds.

## 4.7 Data Storage Ratio

*The data storage ratio must be disclosed. It is computed by dividing the total data storage of the priced configuration (expressed in GB) by the size chosen for the test database as defined in 4.1.3.1. The ratio must be reported to the nearest 1/100<sup>th</sup>, rounded up.*

The database storage ratio can be found in Table 4.7

**Table 4.7: Data Storage Ratio**

Storage Devices	Space per Disk(GB)	Total Disk Space(GB)	Total Storage Capacity(GB)	Scale factor	Data Storage Ratio
8 x 1.6TB 2.5 inch Ent. Performance 6GSATA SSD	1,638	13,104	36,944	10,000	3.69
4 x UCS Rack PCIe Storage 6400GB SanDisk SX350	5,960	23,840			

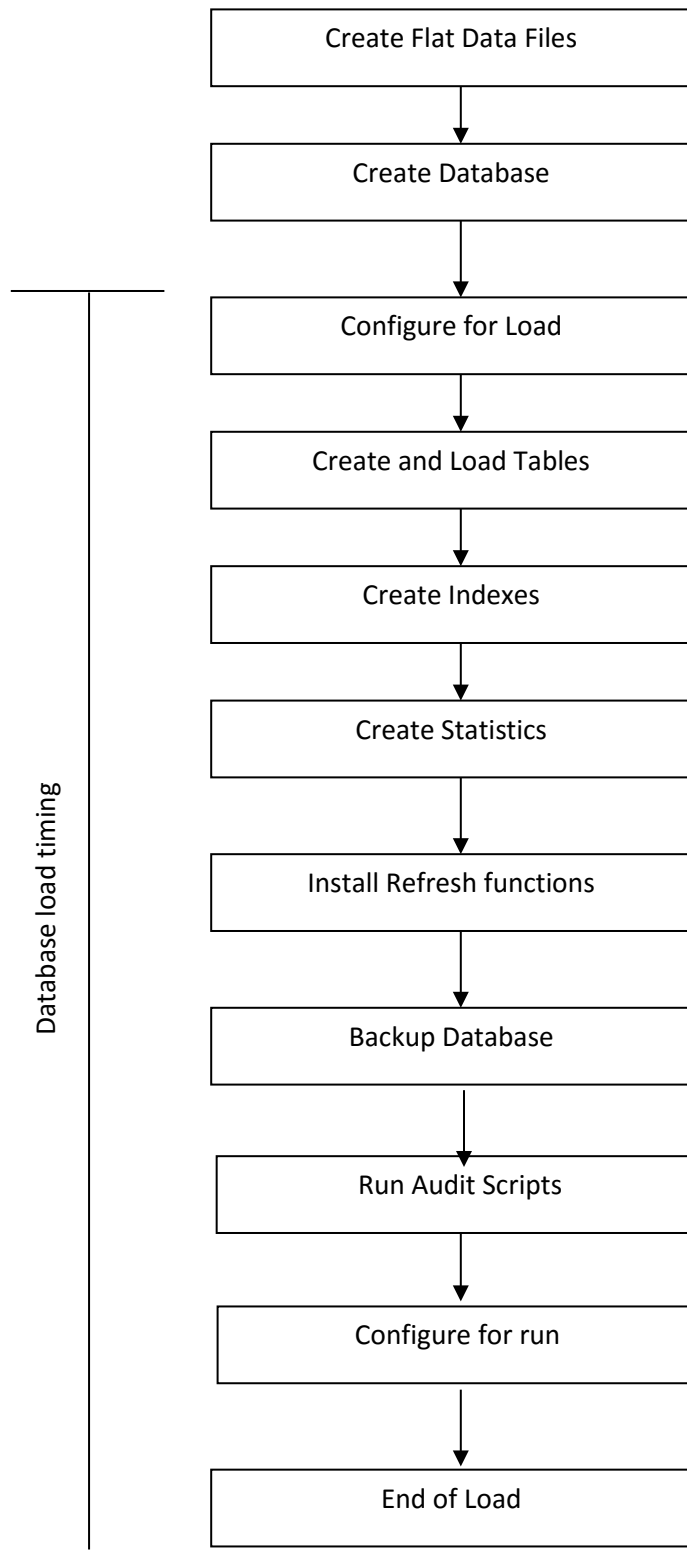
## 4.8 Database Load Mechanism Details and Illustration

*The details of the database load must be disclosed, including a block diagram illustrating the overall process. Disclosure of the load procedure includes all steps, scripts, input and configuration files required to completely reproduce the test and qualification databases.*

Flat files were created using DBGGEN. The tables were loaded as shown in Figure 4.8.



**Figure 4.8: Block Diagram of Database Load Process**



## 4.9 Qualification Database Configuration

*Any differences between the configuration of the qualification database and the test database must be disclosed.*

The qualification database used identical scripts to create and load the data with changes to adjust for the database scale factor.

## 4.10 Memory to Database Size Percentage

*The memory to database size percentage must be disclosed.*

The memory to database size percentage is 61.4%.

# Clause 5: Performance Metrics and Execution Rules Related Items

## 5.1 Steps in the Power Test

*The details of the steps followed to implement the power test (e.g., system boot, database restart, etc.) must be disclosed.*

The following steps were used to implement the power test:

1. RF1 Refresh Function
2. Stream 00 Execution
3. RF2 Refresh Function

## 5.2 Timing Intervals for Each Query and Refresh Function

*The timing intervals (see Clause 5.3.6) for each query of the measured set and for both refresh functions must be reported for the power test.*

See the Numerical Quantities Summary in the Executive Summary at the beginning of this report.

## 5.3 Number of Streams for The Throughput Test

*The number of execution streams used for the throughput test must be disclosed.*

Nine query streams and one refresh stream were used for the Throughput Test.

## 5.4 Start and End Date/Times for Each Query Stream

*The start time and finish time for each query execution stream must be reported for the throughput test.*

See the Numerical Quantities Summary in the Executive Summary at the beginning of this report.

## 5.5 Total Elapsed Time for the Measurement Interval

*The total elapsed time of the measurement interval (see Clause 5.3.5) must be reported for the throughput test.*

See the Numerical Quantities Summary in the Executive Summary at the beginning of this report.

## 5.6 Refresh Function Start Date/Time and Finish Date/Time

*Start and finish time for each update function in the update stream must be reported for the throughput test.*

See the Numerical Quantities Summary in the Executive Summary at the beginning of this report.

## 5.7 Timing Intervals for Each Query and Each Refresh Function for Each Stream

*The timing intervals (see Clause 5.3.6) for each query of each stream and for each update function must be reported for the throughput test.*

See the Numerical Quantities Summary in the Executive Summary at the beginning of this report.

## 5.8 Performance Metrics

*The computed performance metrics, related numerical quantities and the price performance metric must be reported.*

See the Numerical Quantities Summary in the Executive Summary at the beginning of this report.

## 5.9 The Performance Metric and Numerical Quantities from Both Runs

*A description of the method used to determine the reproducibility of the measurement results must be reported. This must include the performance metrics (QppH and QthH) from the reproducibility runs.*

Performance results from the first two executions of the TPC-H benchmark indicated the following difference for the metric points:

<b>Run</b>	<b>QppH @ 10,000GB</b>	<b>QthH @ 10,000GB</b>	<b>QphH @ 10,000GB</b>
<b>Run 1</b>	1,391,173.90	894,129.50	1,115,298.00
<b>Run 2</b>	1,719,562.00	879,023.30	1,229,445.00

## 5.10 System Activity Between Tests

*Any activity on the SUT that takes place between the conclusion of Run1 and the beginning of Run2 must be disclosed.*

There was no activity between Run1 and Run2.

# Clause 6: SUT and Driver Implementation

## Related Items

### 6.1 Driver

*A detailed description of how the driver performs its functions must be supplied, including any related source code or scripts. This description should allow an independent reconstruction of the driver.*

The TPC-H benchmark was implemented using a Microsoft tool called StepMaster. StepMaster is a general purpose test tool which can drive ODBC and shell commands. Within StepMaster, the user designs a workspace corresponding to the sequence of operations,(or steps) to be executed. When the workspace is executed, StepMaster records information about the run into a database as well as a log file for later analysis.

StepMaster provides a mechanism for creating parallel streams of execution. This is used in the throughput tests to drive the query and refresh streams. Each step is timed using a millisecond resolution timer. A timestamp T1 is taken before beginning the operation and a timestamp T2 is taken after completing the operation. These times are recorded in a database as well as a log file for later analysis.

Two types of ODBC connections are supported. A dynamic connection is used to execute a single operation and is closed when the operation finishes. A static connection is held open until the run completes and July be used to execute more than one step. A connection (either static or dynamic)can only have one outstanding operation at any time.

In TPC-H, static connections are used for the query streams in the power and throughput tests. Step Master reads an access database to determine the sequence of steps to execute. These commands are represented as the Implementation Specific Layer. StepMaster records its execution history, including all timings, in the Access database. Additionally StepMaster writes a textual log file of execution for each run.

The stream refresh functions were executed using multiple batch scripts. The initial script is invoked by StepMaster and subsequent scripts are called from within the scripts.

The source for Step Master and the RF scripts is disclosed in the Supporting Files archive.

### 6.2 Implementation Specific Layer (ISL)

*If an implementation-specific layer is used, then a detailed description of how it performs its functions must be supplied, including any related source code or scripts. This description should allow an independent reconstruction of the implementation-specific layer.*

See Driver section for details.

### 6.3 Profile-Directed Optimization

*If profile-directed optimization as described in Clause 5.2.9 is used, such used must be disclosed.*

Profile-directed optimization was not used.

# Clause 7: Pricing Related Items

## 7.1 Hardware and Software Used

*A detailed list of hardware and software used in the priced system must be reported. Each item must have vendor part number, description, and release/revision level, and either general availability status or committed delivery date. If package-pricing is used, contents of the package must be disclosed. Pricing source(s) and effective date(s) of price(s) must also be reported.*

A detailed list of all hardware and software, including the 3-year support, is provided in the Executive Summary in the Abstract section of this report. The price quotations are included in Appendix A.

## 7.2 Total 3 Year Price

*The total 3-year price of the entire configuration must be reported including: hardware, software, and maintenance charges. Separate component pricing is recommended. The basis of all discounts used must be disclosed.*

A detailed list of all hardware and software, including the 3-year support, is provided in the Executive Summary in the Abstract section of this report. The price quotations are included in Appendix A. This purchase qualifies for a 61% discount from Cisco Systems, Inc. on all the hardware and 35% on services.

## 7.3 Availability Date

*The committed delivery date for general availability of products used in the price calculations must be reported. When the priced system includes products with different availability dates, the availability date reported on the executive summary must be the date by which all components are committed to being available. The full disclosure report must report availability dates individually for at least each of the categories for which a pricing subtotal must be provided.*

The total system availability date is November 28, 2016.

## 7.4 Orderability Date

*For each of the components that are not orderable on the report date of the FDR, the following information must be included in the FDR:*

- Name and part number of the item that is not orderable*
- The date when the component can be ordered (on or before the Availability Date)*
- The method to be used to order the component (at or below the quoted price) when that date arrives*
- The method for verifying the price*

All components are orderable at the time of publication date.

## 7.5 Country-Specific Pricing

*Additional Clause 7 related items July be included in the Full Disclosure Report for each country-specific priced configuration. Country-specific pricing is subject to Clause 7.1.7.*

The configuration is priced for the United States of America.

# Clause 8: Full Disclosure

## 8.1 Supporting File Index

*An index for all files included in the supporting files archive as required by Clause 8.3.2 through 8.3.8 must be provided in the report.*

<b>Clause</b>	<b>Description</b>	<b>Archive File Pathname</b>
Clause 1	OS and DB parameter settings	SupportingFilesArchive\Clause1
Clause 2	DB creation scripts	SupportingFilesArchive\Clause2
Clause 3	ACID scripts, ACID output	SupportingFilesArchive\Clause3
Clause 4	DB Load scripts, Qualification output	SupportingFilesArchive\Clause4
Clause 5	Query output results	SupportingFilesArchive\Clause5
Clause 6	Implementation Specific layer source code	SupportingFilesArchive\Clause6
Clause 8	Query substitution parameters, RF function source	SupportingFilesArchive\Clause8

# Clause 9: Audit Related Items

## Auditors' Information and Attestation Letter

*The auditor's agency name, address, phone number, and Attestation letter with a brief audit summary report indicating compliance must be included in the full disclosure report. A statement should be included specifying who to contact in order to obtain further information regarding the audit process.*

This benchmark was audited by:

Francois Raab,  
Infosizing,  
20 Kerg Ln.  
Manitou Springs, CO 80829.  
Phone Number: 719-473-7555.

The auditor's letter is included in the following section.



Benchmark sponsor: Raghunath Nambiar  
Cisco Systems Inc.  
3800 Zanker Road  
San Jose, CA 95134

November 15, 2016

I verified the TPC Benchmark H (TPC-H™ v2.17.1) performance of the following configuration:

Platform: Cisco UCS C460 M4 Rack-Mount Server  
Operating System: Microsoft Windows Server 2016 Standard Edition  
Database Manager: Microsoft SQL Server 2016 Enterprise Edition  
Other Software: n/a

The results were:

**Performance Metric 1,115,298.0 QphH@3,000GB**

TPC-H Power 894,129.5  
TPC-H Throughput 1,391,173.9  
Database Load Time 7h 56m 49s

### Server

### Cisco UCS C460 M4 Rack-Mount Server

CPUs	4 x Intel Xeon Processor E7-8890 v4 (2.2GHz, 60MB L3)		
Memory	6 TB		
Disks	<b>Qty</b>	<b>Size</b>	<b>Type</b>
	8	1,638 GB	1.6 TB SATA 6Gb SSD
	4	5,960 GB	6400 GB PCIe SanDisk SX350

In my opinion, these performance results were produced in compliance with the TPC requirements for the benchmark.

The following verification items were given special attention:

- The database records were defined with the proper layout and size
- The database population was generated using DBGen
- The database was properly scaled to 10,000GB and populated accordingly
- The compliance of the database auxiliary data structures was verified
- The database load time was correctly measured and reported

- The required ACID properties were verified and met
- The query input variables were generated by QGen
- The query text was produced using minor modifications and no query variant
- The execution of the queries against the SF1 database produced compliant answers
- A compliant implementation specific layer was used to drive the tests
- The throughput tests involved 9 query streams
- The ratio between the longest and the shortest query was such that no query timings were adjusted
- The execution times for queries and refresh functions were correctly measured and reported
- The repeatability of the measured results was verified
- The system pricing was verified for major components and maintenance
- The major pages from the FDR were verified for accuracy

Additional Audit Notes:

None.

Respectfully Yours,

A handwritten signature in black ink, appearing to read "François Raab". The signature is fluid and cursive, with a long horizontal stroke extending to the right.

François Raab, TPC Certified Auditor

# Appendix A: Price Quotes

09/11/2016

PROVANTAGE: Asus VS207D-P 19.5" VS207D-P Widescreen LED 1600x900 VGA HDCP Splendid Video Int



Categories Search



Home > Indexes > ASUS > VS207D-P

Email Page | Wish List | Comparisons

## ASUS 19.5" VS207D-P Widescreen LED 1600x900 VGA HDCP Splendid Video Int



Mr. List: \$89.<sup>99</sup>  
**Only \$74.<sup>15</sup>**  
 Save \$14.<sup>84</sup> (17%)  
[ADD TO CART](#)  
[258 IN STOCK](#)  
[ADD TO WISH LIST](#)

Click image to enlarge or see more views.

**ASUS** Model VS207D-P  
 UPC Code: 886227347377  
 Provantage Code: ASUM01C  
 Condition: Factory New  
 ▶ Screen Size: 19.5"  
 ▶ Product Type: LCD Monitor  
 ▶ Backlight Technology: LED  
 ▶ Aspect Ratio: 16:9  
 ▶ Maximum Resolution: 1600 x 900



[Computing > Monitors and Displays > Monitors](#)

[Specifications](#) [Related/Similar](#)

**ASUS VS207D-P Specifications**  
 19.5" VS207D-P Widescreen LED 1600x900 VGA HDCP Splendid Video Int

**ASUS**  
 Want a Technician to set up your ASUS Chromebook Charging Cart?  
**WE CAN DO THAT!** [CLICK HERE](#)

### Recently Viewed



IOGEAR GKME13 Spill Proof Keyboard & Mouse Combo

[Clear List](#)

### Advantage #2

#### Fast Processing & Delivery:

We are able to process and ship your orders right after you place them. Most ground shipments are within two business days from their destination, ensuring quick delivery.

### \$5 Instant Savings

Was \$41.<sup>99</sup>  
**Now only \$36.<sup>99</sup>**

Diamond Multimedia Ergonomic Articulating Arm Monitor Mount

58-110-28-3

<http://www.provantage.com/asus-vs207d-p-7ASUM01C.htm>

1/5



Contact us Log In Order status Empty  
Search



INDEXES COMPUTING STORAGE PRINTING NETWORKING CABLES OFFICE SUPPLIES ELECTRONICS HOUSEWARES SOFTWARE LICENSES **SAVE!**

Home > Indexes > IOGEAR > GKM513

Email Page | Wish List | Comparisons

### IOGEAR GKM513 Spill Proof Keyboard & Mouse Combo



SAVE 17%

Mfr List: \$19.99  
Only **\$16.47**  
Save \$3.48 (17%)  
[ADD TO CART](#)  
394 IN STOCK  
[ADD TO WISH LIST](#)

Click image to enlarge or see more views.



**Model GKM513**  
UPC Code: 881317508560  
Provantage Code: IOG9092  
Condition: Factory New  
▶ Product Type: **Keyboard & Mouse**  
▶ Keyboard/Keypad Host Interface: **USB**  
▶ Keyboard/Keypad Depth: **5.50"**  
▶ Keyboard/Keypad Height: **1.13"**  
▶ Pointing Device Depth: **4.29"**



[Computing](#) > [Input Devices](#) > [Keyboards and Keypads](#)

[Specifications](#)

[Related/Similar](#)

#### IOGEAR GKM513 Specifications

GKM513 Spill Proof Keyboard & Mouse Combo

#### Overview

IOGEAR's Spill-Resistant Keyboard and Mouse Combo is designed to be protected from

80-1118-201 X



#### Recently Viewed

None

#### Advantage #5

#### Experienced Employees:

Our employees on average have at least 10 years of experience working for us and are some of the most qualified in the industry. Rest assured your orders are in good hands.

#### \$75 Instant Savings



Was \$299.99  
Now only **\$224.99**

Canon USA ImageCLASS LBP251dw Monochrome Laser Printer 1200x600 DPI 30PPM

All Instant Savings Offers

#### Main Index

[Accessories Finder](#)

[Agreements Center](#)

[Special Offers](#)

<http://www.provantage.com/logear-gkm513-7IOG9092.htm>

Microsoft Corporation  
One Microsoft Way  
Redmond, WA 98052-6399

Tel 425 882 8080  
Fax 425 936 7329  
<http://www.microsoft.com/>

**Microsoft**  
November 2, 2016

Cisco  
Raghunath Nambiar  
3800 Zanker Road  
San Jose, CA 95134

Here is the information you requested regarding pricing for several Microsoft products to be used in conjunction with your TPC-H benchmark testing.

All pricing shown is in US Dollars (\$).

Description	Unit Price	Quantity	Price
<b>Database Management System</b>			
<b>SQL Server 2016 Enterprise Edition</b> <i>2 Core License</i> <i>Open Program - Level C</i>	\$13,472.50	48	\$646,680.00
<b>Database Server Operating System</b>			
<b>Windows Server 2016 Standard Edition</b> <i>2-Core Pack</i> <i>Open Program - Level C</i>	\$92.00	48	\$4,416.00
<b>Support</b>			
<b>Microsoft Problem Resolution Services</b> <i>Professional Support</i> <i>(1 Incident).</i>	\$259.00	1	\$259.00

Server 2016 Enterprise Edition and Windows Server 2016 Standard Edition are currently orderable and available.

All products are orderable through Microsoft's normal distribution channels. A list of Microsoft's resellers can be found in the Microsoft Product Information Center at <http://www.microsoft.com/products/info/render.aspx?view=22&type=how>

Defect support is included in the purchase price. Additional support is available from Microsoft PSS on an incident by incident basis at \$259 call.

This quote is valid for the next 90 days.  
Reference ID: TPCH\_qhtplyIGYLKTVUKf57289llhfg\_2016\_crn.