

TPC Benchmark™ C

Full Disclosure Report for



PRIMERGY R450

**Using Microsoft SQL Server 2000
Enterprise Edition SP2**

**and Microsoft Windows 2000
Advanced Server SP2**

May 24, 2002

First Edition



PRIMERGY R450
C/S with 3 PRIMERGY L200

TPC-C REV 5.0
 EXECUTIVE SUMMARY

Report Date: May 24, 2002

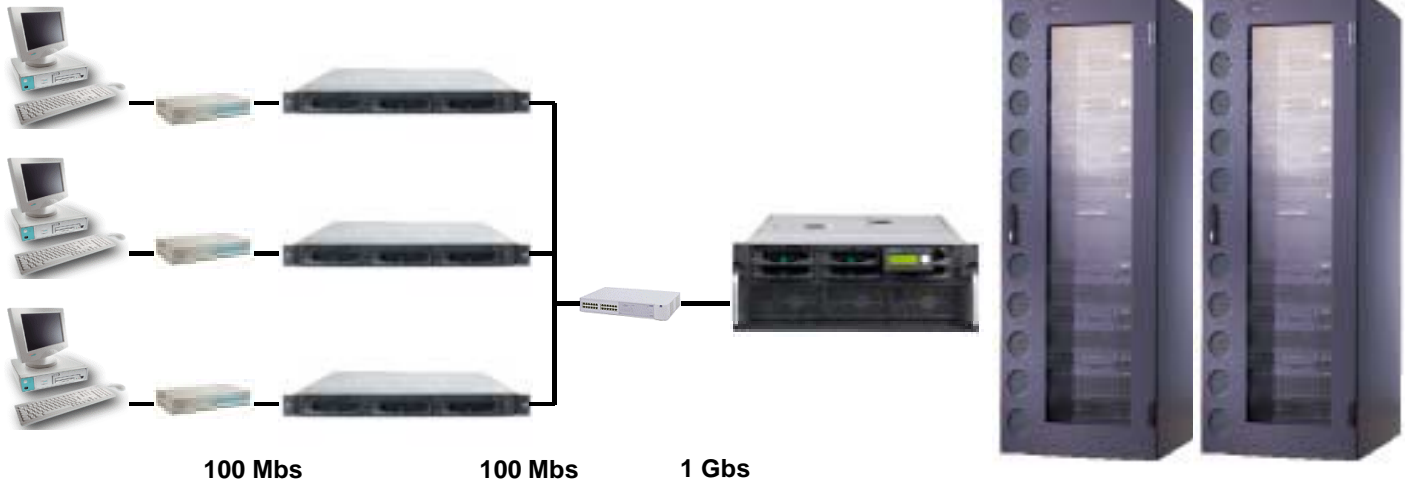
Total System Cost	TPC-C Throughput	Price/Performance	Availability Date	
Yen 65,952,610	48,906.18 tpmC	Yen 1,348.55/tpmC	July 10, 2002	
Processors	Database Manager	Operating System	Other Software	Number of Users
Server 4 Intel Xeon™ MP 1.60 GHz with 1M iL3 Cache Client 3 x 2 Intel Pentium® III 1.26 GHz with 512 KB SLC	Microsoft SQL Server 2000 Enterprise Edition SP2	Microsoft Windows 2000 Advanced Server SP2	Windows 2000 Server, IIS 5.0 and COM+	39000

Terminals:
39000 users

Client:
3 x PRIMERGY L200
13000 users per client

Server:
PRIMERGY R450
6 SCSI Controller

Storage:
21 x PRIMERGY S30
220 disk



System Components	Qty/Srv.	1 PRIMERGY R450	Qty/Client	3 PRIMERGY L200
Processors	4	Intel Xeon™ MP 1.60 GHz with 1M iL3 Cache	2	Intel Pentium® III 1.26 GHz with 512 KB SLC
Memory	8	GB	512	MB
Disk Controller	6	Mylex eXtremeRAID 2000	1	SCSI Controller
Disk Drives	235	18 GB	1	18 GB
Total GB of Storage	1	3,755 GB		
Tape Drive	1	20 GB DAT		



PRIMERGY R450

TPC-C REV 5.0
EXECUTIVE SUMMARY

C/S with 3 PRIMERGY L200

Report Date: May 24, 2002

Description	Part Number	Third Party Brand	Unit Price	Qty.	Extended Price	3yr Maint. Price
PRIMERGY R450 Xeon-MP 1.6GHz 1MB iI3	PGR4A41R	1	2,051,000 Yen	1	2,051,000 Yen	
Processor Xeon-MP 1.6GHz 1MB iI3	PG-FG114	1	952,000 Yen	3	2,856,000 Yen	
Memory 512MB->2GB(512MBx4)						
PC1600DDR RAM Conversion Kit	PGBRU2M	1	420,000 Yen	1	420,000 Yen	
Memory 2GB(512MBx4) PC1600DDR RAM	PG-RM2M	1	532,000 Yen	3	1,596,000 Yen	
Tape DAT DDS4 20GB	GP5SDT401	1	140,000 Yen	1	140,000 Yen	
Disk 18GB, 10K, U160, hot plug, 1"	PG-HDH81B	1	56,000 Yen	1	56,000 Yen	
PCI Gigabit Ethernet Controller	PG-1891	1	35,000 Yen	1	35,000 Yen	
Mylex eXtremeRAID 2000 4x U160 SCSI, BBU	PG-144B	1	294,000 Yen	6	1,764,000 Yen	
Keyboard	GP5-R1KB1	1	14,000 Yen	1	14,000 Yen	
Monitor 15"	FMV-DP849	1	18,900 Yen	1	18,900 Yen	
PRIMERGY S30 GE RH 2-Channel U160 SCSI	PG-R1DC6	1	238,000 Yen	1	238,000 Yen	
SCSI Cable UHD68(S)	PG-CBLS004	1	21,000 Yen	2	42,000 Yen	
3 Year Maintenance Server, 7x24, 4hr Resp.						1,894,180 Yen
Server Hardware Subtotal					9,230,900 Yen	
DataCenter Rack 38 HU	PG-R3RC1	1	238,000 Yen	2	476,000 Yen	
APC-USV 3000VA Rack	GP5-R1UP3	1	271,600 Yen	2	543,200 Yen	
18GB, 15k, U160, Hot plug, 1"	PG-HDH85B2	1	105,000 Yen	234	24,570,000 Yen	
PRIMERGY S30 GE RH 1-Channel U160 SCSI	PG-R1DC6BZ	1	238,000 Yen	20	4,760,000 Yen	
SCSI Cable UHD68(S)	PG-CBLS004	1	21,000 Yen	20	420,000 Yen	
3 Year Maintenance Rack, 7x24, 4hr Resp.						6,313,830 Yen
Storage Subtotal					30,769,200 Yen	
Maint. Server + Storage						8,208,010 Yen
PRIMERGY L200 GE RS PIII 1.26GHz/ 512KB	PGL2AP1R	1	319,500 Yen	3	958,500 Yen	
Processor PIII 1.26GHz/ 512KB	PG-FG10P	1	140,000 Yen	3	420,000 Yen	
Memory 256MB(128MBx2) SDRAM PC133 ECC	PG-RM25GA	1	49,000 Yen	3	147,000 Yen	
CD- ROM, ATAPI 0.5"	PG-CD315	1	17,500 Yen	3	52,500 Yen	
Monitor 15"	FMV-DP849	1	18,900 Yen	3	56,700 Yen	
Keyboard	GP5-R1KB1	1	14,000 Yen	3	42,000 Yen	
3 Year Maintenance, 7x24, 4hr Resp.						344,050 Yen
Client Hardware Subtotal					1,676,700 Yen	344,050 Yen
Windows Advanced Svr 2000 (open program no level)	B511C02F	1	567,200 Yen	1	567,200 Yen	
MS SQL-Server 2000 Ent.Edit. Per Proc Lic. (open program level C)	B293C80Y0	1	2,791,700 Yen	4	11,166,800 Yen	
Server Software Subtotal					11,734,000 Yen	
Windows Svr 2000 (open program no level)	B511C02A1	1	142,000 Yen	3	426,000 Yen	
VC++ Pro 6.0 Win32	B298C2033	1	84,600 Yen	1	84,600 Yen	
Client Software Subtotal					510,600 Yen	
Software Support (all above)						3,140,730 Yen
24x10/0100Mbit Switch	SH4124	1	193,700 Yen	1	193,700 Yen	
Gigabit Uplink	SH41GT1	1	87,100 Yen	1	87,100 Yen	
3 Year Maintenance, 7x24, 4hr Resp.						57,620 Yen
User Connectivity Subtotal					280,800 Yen	
Total					54,202,200 Yen	11,750,410 Yen

1=Fujitsu

Prices used in TPC benchmarks reflect the actual prices a customer would pay for a one-time purchase of the stated components. Individually negotiated discounts are not permitted. Special prices based on assumptions about past or future purchases are not permitted. All discounts reflect standard pricing policies for the listed components. For complete details, see the pricing section of the TPC benchmark pricing specifications. If you find that the stated prices are not available according to these terms, please inform the TPC at pricing@tpc.org. Thank you.

Three-Year Cost of Ownership: Yen 65,952,610
tpmC Rating: 48,906.18
Yen / tpmC: 1,348.55

Note: The benchmark results and test methodology were audited by Bradley Askins of InfoSizing

Numerical Quantities Summary

MQTh, computed Maximum Qualified Throughput		48,906.18 tpmC	
Response Times (in seconds)	90th percentile	Average	Maximum
- New-Order	0.56	0.35	5.46
- Payment	0.46	0.26	4.58
- Order-Status	0.48	0.29	5.64
- Delivery (interactive portion)	0.11	0.10	0.46
- Delivery (deferred portion)	0.41	0.25	1.19
- Stock-Level	1.86	1.37	4.84
- Menu	0.11	0.10	1.03
Transaction Mix, in percent of total transactions			
- New-Order			44.90 %
- Payment			43.03 %
- Order-Status			4.01 %
- Delivery			4.03 %
- Stock-Level			4.02 %
Emulation Delay (in seconds)		Response Time	Menu
- New-Order		0.1	0.1
- Payment		0.1	0.1
- Order-Status		0.1	0.1
- Delivery (interactive)		0.1	0.1
- Stock-Level		0.1	0.1
Keying/Think Times (in seconds)	Minimum	Average	Maximum
- New-Order	18.00/0.000	18.02/12.06	18.06/120.52
- Payment	3.00/0.000	3.02/12.05	3.06/120.51
- Order-Status	2.00/0.000	2.02/10.02	2.05/100.50
- Delivery (interactive)	2.00/0.000	2.02/ 5.06	2.04/ 50.51
- Stock-Level	2.00/0.000	2.02/ 5.05	2.04/ 50.51
Test Duration and Checkpointing			
- Ramp-up time		35 minutes	
- Measurement interval		120 minutes	
- Number of checkpoints		4	
- Checkpoint interval		30 minutes	
- Transactions during measurement interval (all types)		13,597,484	