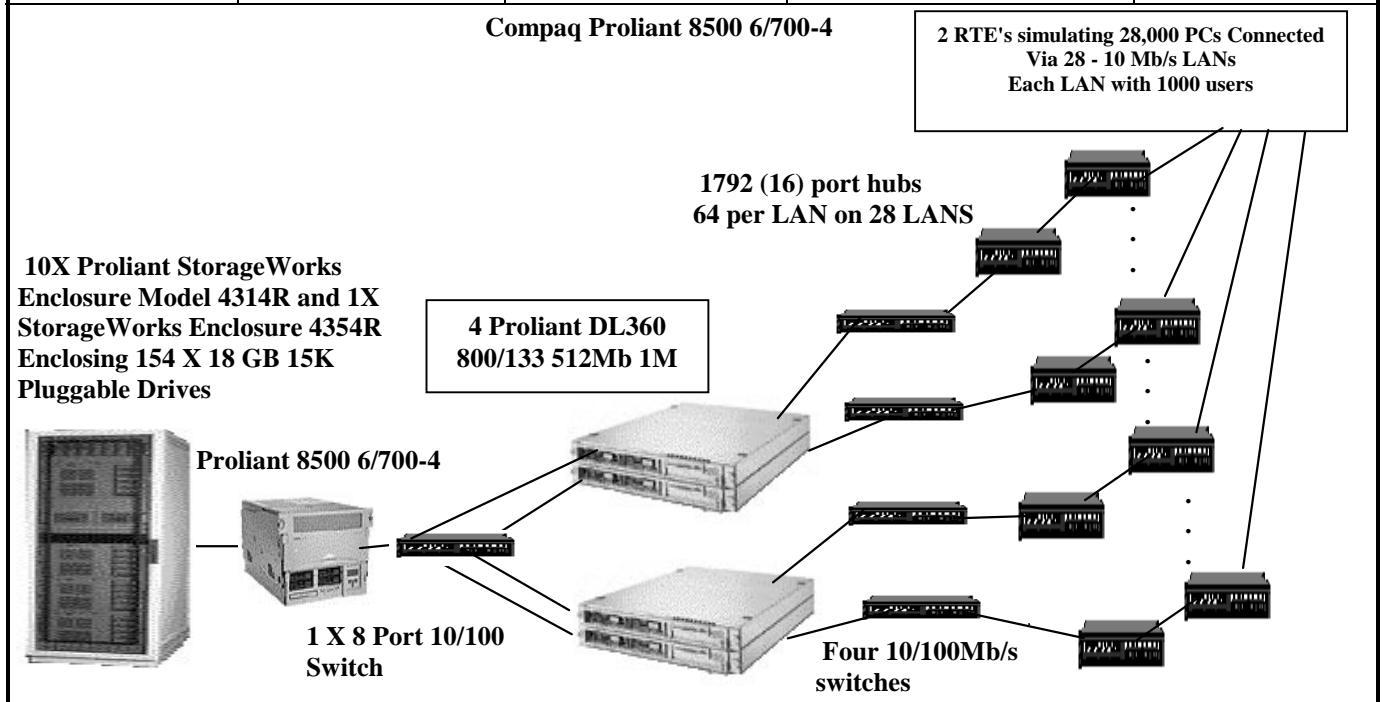


Compaq Computer Corporation		Proliant 8500 6/700-4 C/S with 4 ProLiant DL360		TPC-C Rev. 3.5 Report Date: Dec 1, 2000					
Total System Cost		TPC-C Throughput		Price/Performance		Availability Date			
\$445,747		34599.63		\$12.89		Dec 1, 2000			
Processors		Database Manager		Operating System		Other Software		Number of Users	
4 Pentium III Xeon 700 MHz		Microsoft SQL Server 2000 Enterprise Edition		Windows 2000 Advanced Server		Microsoft Visual C++ Microsoft COM+		28000	



	Server		Each Client	
System Components	Quantity	Description	Quantity	Description
Processor	4	700MHz PentiumIII Xeon w/ 2MB Cache	2	800MhzPentium III w/ 256K cache
Memory	16	512MB	4	128MB
Disk Controllers	6	SMART 5304 Array Controller	1	Integrated Ultra SCSI Controller
Disk Drives	1 154	9.1GB SCSI Drive 18GB SCSI Drive	1	9.1GB SCSI Drive
Total Storage		2.61003 Terabytes		9.1GB
Tape Drives	1	4/8 GB SLR Internal		

Compaq Computer Corporation	ProLiant 8500-6/700-4		TPC-C Rev. 3.5			
	Client/Server		Report Date:		1-Dec-00	
Description	Part Number	Third Party	Unit Price	Qty	Extended Price	5 yr. Maint. Price
Server Hardware						
		Brand	Pricing			
ProLiant 8500 6/700-4 2048 Cache	159378-001		1	41,440	1	41,440
4 Pentium III Xeon/700MHz 2MB Cache						
2048MB SDRAM Memory						
- CD-ROM 24X ,NC3131 Dual Port 10/100 NIC						
1GB SDRAM (4x256) memory kit	328808-B21		1	3,809	6	22,855
Cache Accelerator	328819-B21		1	1,232	1	1,232
StorageWorks Enclosure Model 4314R	190209-001		1	2,912	10	29,120
StorageWorks Enclosure Model 4354R	190211-001		1	3,472	1	3,472
Compaq SMART Array Controller 5304 - 4 SCSI Chan.	158939-B21		1	2,463	6	14,777
Compaq Rack Model 9142 (42U - Opal) - Shock Pallet	120663-B22		1	1,444	1	1,444
Side Panel Kit - 9142 Rack	120670-B21		1	209	1	209
R3000 UPS	242705-001		1	1,410	1	1,410
V710 Color Monitor	187895-001		1	321	1	321
4/8-GB SLR Tape Drive - Internal	295480-B22		1	448	1	448
9.1 GB Hot-Plug Wide U2 10K 1"	328939-B22		1	469	1	469
18.2 GB Hot-Plug Wide U3 15K 1"	188122-B22		1	940	154	144,711
ProLiant Enterprise Server - Parts Exchange - 1 Year	PES-PE-1Y-SU		1	597	2	1,194
ProLiant Storage System - Parts Exchange - 1 Year	PSS-PE-1YEAR		1	255	22	5,610
Onsite 5x8 4 Hr Service Upgrade from Compaq Standard Service	OS-8X5X4-SU	Amherst	1			20,953
					Subtotal	261,909
						27,757
Server Software						
Microsoft SQL Server 2000 Enterprise Edition (per processor)	810-00846	Microsoft	2	16,541	4	66,164
Microsoft Visual C++ 6.0	048-00317	Microsoft	2	549	1	549
Microsoft Windows 2000 Advanced Server	C10-00475	Microsoft	2	2,399	1	2,399
					Subtotal	69,112
						10,475
Client Hardware						
ProLiant DL360R P800/133 128 M1	161080-001		1	4,144	4	16,576
PIII 800/133-256 Processor Kit	161084-B21		1	672	4	2,688
	128277-B21		1	321	12	3,857
128 Reg 133MHz SDRAM DIMM						
V710 Color Monitor	187895-001		1	321	4	1,286
9.1 GB Hot-Plug Wide U2 10K 1"	328939-B22		1	469	4	1,877
ProLiant Workgroup Server - Parts Exchange - 1 Year	FM-LOPRT-12		1	259	8	2,072
Onsite 5x8 4 Hr Service Upgrade from Compaq Standard Service	OS-8X5X4-SU	Amherst	1			2,103
					Subtotal	26,284
						4,175
Client Software						
Microsoft Windows 2000 Server	C11-00821	Microsoft	2	738	4	2,952
					Subtotal	2,952
						0
User Connectivity						
NetCruiser Tech 17-port 10Mbps Ethernet hub		Netcruiser	3	36	1972	70,992
10/100 Dual Speed 8PT RM Switch	929051	Linksys	4	129	7	903
					Subtotal	71,895
						0
Large Purchase and Cash discount	9.0%		1			
						(\$25,937)
						(\$2,874)
					Total	\$406,214
						\$39,533
Prices used in TPC benchmarks reflect the actual prices a customer would pay for a one-time purchase of the stated components. Individually negotiated discounts are not permitted. Special prices based on assumptions about past or future purchases are not permitted. All discounts reflect standard pricing policies for the listed components. For complete details, see the pricing sections of the TPC benchmark pricing specifications. If you find that the stated prices are not available according to these terms, please inform the TPC at pricing@tpc.org. Thank you.				Five-Year Cost of Ownership: \$445,747		
Pricing: 1=Amherst Computer Products 2=Microsoft 3=Netcruiser Tech 4=Combined Digital				tpmC Rating: 34599.63		
Note 1 = 5 Year warranty with 10% Spares -				\$ / tpmC: \$12.89		
Note: The benchmark results and test methodology were audited by Loma Livingtree of Performance Metrics, Inc.						

Numerical Quantities Summary

MQTH, Computed Maximum Qualified Throughput

34599.63 tpmC

% throughput difference, reported & reproducibility runs

0.999%

Response Times (in seconds)

	Average	90%	Maximum
New-Order	0.55	0.92	5.97
Payment	0.47	0.84	6.21
Order-Status	0.49	0.85	5.47
Delivery (interactive portion)	0.10	0.11	0.72
Delivery (deferred portion)	0.20	0.35	1.06
Stock-Level	1.44	1.98	6.42
Menu	0.10	0.11	0.94

Transaction Mix, in percent of total transaction

New-Order	44.86%
Payment	43.02%
Order-Status	4.05%
Delivery	4.04%
Stock-Level	4.03%

Emulation Delay (in seconds)

	Resp.Time	Menu
New-Order	0.10	0.10
Payment	0.10	0.10
Order-Status	0.10	0.10
Delivery (interactive)	0.10	0.10
Stock-Level	0.10	0.10

Keying/Think Times (in seconds)

	Min.	Average	Max.
New-Order	18.00/0.00	18.02/12.18	18.03/121.71
Payment	3.00/0.00	3.02/12.17	3.03/121.71
Order-Status	2.00/0.00	2.02/10.17	2.03/101.50
Delivery (interactive)	2.00/0.00	2.02/5.08	2.03/51.00
Stock-Level	2.00/0.00	2.02/5.11	2.03/50.99

Test Duration

Ramp-up time	37 minutes
Measurement interval	30 minutes
Transactions (all types) completed during measurement interval	2313921
Ramp down time	5 minutes

Checkpointing

Number of checkpoints	1
Checkpoint interval	30 minutes