	<h1>HP NetServer LH 6000</h1> <h2>Client/Server</h2>			TPC-C Revision 3.5
	<b>Total System Cost</b>	<b>TPC Throughput</b>	<b>Price/Performance</b>	<b>Report Date</b>
\$392,729	33136.45 tpmC	\$11.85 per tpmC	July 21, 2000	July 21, 2000
<b>Processors</b>	<b>Database Manager</b>	<b>Operating System</b>	<b>Other Software</b>	<b>Number of Users</b>
6 Intel Pentium III Xeon 550MHz 2 Mbyte L2	Microsoft SQLServer 7.0 Enterprise Edition	Microsoft NT 4.0 Enterprise Edition	Microsoft Visual C++ Microsoft COM+ Transaction Monitor	26600

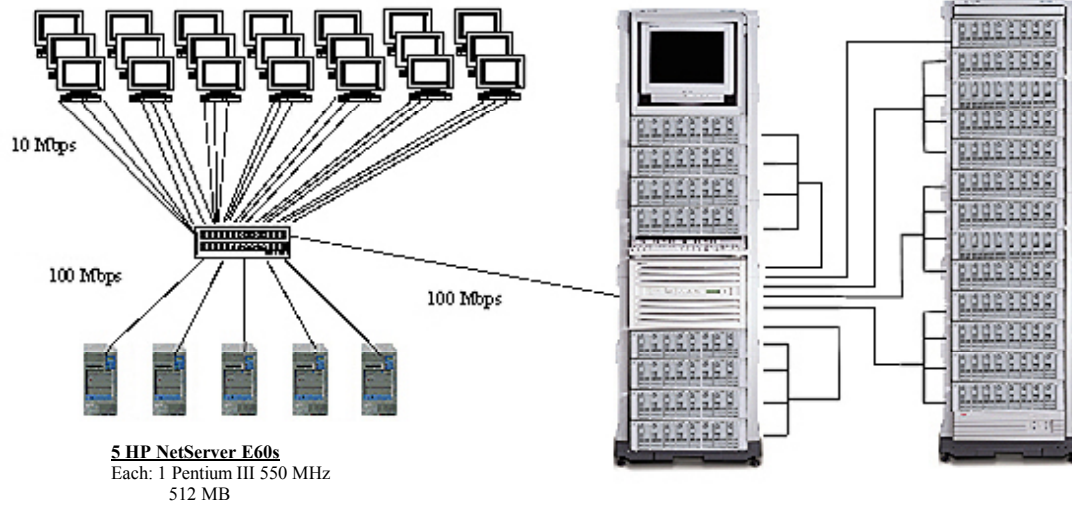
Total of 26,000 PCs

**HP NetServer LH 6000**

6 x Pentium III Xeon 550 MHz/2MB  
4 GB RAM  
6 x AMI 1500-H

**Storage:**


HP NetServer Rack Storage



**5 HP NetServer E60s**

Each: 1 Pentium III 550 MHz  
512 MB

System Components	Server		Each Client	
	Qty	Type	Qty	Type
Processors	6	550MHz Intel Pentium III Xeon	1	550MHz Pentium III
Cache Memory	each	2 Mbyte L2 cache	each	512kbyte L2 Cache
Memory	4	Gbyte	512	Mbyte
Disk Controllers	6	AMI 1500-H	1	HP SCSI-2 Controller
Disk Drives	240	HP Hot-swap 9Gbyte 10krpm SCSI	1	9 Gbyte disk
	12	HP Hot-swap 18 Gbyte 10krpm SCS		
Total Storage	2237.16	Gbyte		
Tape Drives	1	HP SureStore DAT 24i		
Terminals	1	Console Terminal	1	Console Terminal

		<b>HP NetServer LH 6000</b> <b>6P/550/2M/4GB</b>			<b>TPC-C Rev 3.5</b>		
				Report Date:	<b>21-Jul-00</b>		
Description	Part Number	Brand	Price Key	Unit Price	Qty	Extended Price	Maint. Price
<b>LH 6000r</b> with one Pentium III Xeon 550MHz 2MB L2 cache, rack unit. Includes: 256MB PC 133SDRAM, integrated dual channel HP NetRAID controller, integrated 10/100TX NIC, CD ROM, flexible disk drive, hot swap power supplies and fans, integrated HP Remote assistant							
	D9113A	HP	1	10,946	1	10946	
Pentium III Xeon 550MHz 2MB Cache	D9335A	HP	1	5250	5	26250	
512 MB DIMM kit	D8267A	HP	1	2090	8	16720	
HP 15" Color Monitor	D2828A	HP	1	185	1	185	
HP NetServer mini-DIN keyboard and mouse	D4950B/C37E	HP	1	79	1	79	
HP 9.1 GB 10K HotSwap Wide Ultra2 SCSI Disk	D6107A	HP	1	430	1	430	
HP Rack System/E41 (41 Units usable space)	J1500A	HP	1	1590	2	3180	
HP Power Distribution Unit 120-240V	E5929A	HP	1	234	4	936	
HP SureStore DAT24i Internal Tape Drive	C1555C	HP	1	790	1	790	
APC Smart-UPS 3000 + Spares	588293	APC	1	1725	3	5175	
<b>Server Hardware Subtotal</b>						<b>64691</b>	<b>0</b>
HP NetServer Rack Storage/12	D5989B	HP	1	1890	22	41580	
HP 9GB, 10krpm Hot-swap disk module	D6107A	HP	1	430	240	103200	
HP 18GB, 10krpm Hot-swap disk module	D7174A	HP	1	540	12	6480	
AMI MegaRAID 1500H Disk Array Controller + spares	1500-H	AMI	1	1090	8	8720	1592
HP SCSI Cable 2.5m UDHTS 68/HDTS 68	D6020A	HP	1	97	22	2134	
<b>Storage Subtotal</b>						<b>162114</b>	<b>1592</b>
Microsoft SQL Server 7.0 Enterprise Ed. Unlimited Clients	810-00217	MS	1	24960	1	24960	10475
Microsoft Windows NT Server 4.0 Enterprise Edition	Z75092	MS	1	3330	1	3330	
<b>Server Software Subtotal</b>						<b>28290</b>	<b>10475</b>
HP Netserver E60 Pentium III 550MHz	D9124A	HP	1	1395	5	6975	
128MB DRAMs for E60	D7156A	HP	1	215	20	4300	
HP NetServer 10/100TX PCI LAN Adapter	D5013A	HP	1	82	5	410	
HP 15" Color Monitor	D2828A	HP	1	185	5	925	
<b>Client Hardware Subtotal</b>						<b>12610</b>	<b>0</b>
HP Full System Support: 5 Yrs, on-site, 4 Hr response, Same Day, 5x8 (Mon-Fri) includes database server, clients & mass storage							
	---	HP	2				34200
Microsoft Windows 2000 Server	C11-0016	MS	1	568	5	2840	
Microsoft Visual C++	716856	MS	1	449	1	449	
<b>Client Software Subtotal</b>						<b>3289</b>	<b>0</b>
HP Procurve Switch 2424M, Lifetime Warranty + 10% spares	J4093A	HP	1	979	8	7832	
ArkPC 17-port 10baseT hub (8+1 ports)							
5 Yr Warranty + 10% spares	CT1017D1	ArkPC	4	37	1828	67636	
<b>Connectivity Subtotal</b>						<b>75468</b>	<b>0</b>
<b>Total</b>						<b>\$346,462</b>	<b>\$46,267</b>
<b>Notes: Price key: 1=Software House International, 2= HP Price</b> <b>3=Microsoft, 4=I-Market</b>						<b>5-yr Cost of Ownership: \$392,729</b> <b>tpmC: 33,136.45</b> <b>\$/tpmC: \$ 11.85</b>	
Prices used in TPC benchmarks reflect actual prices a customer would pay for a one-time purchase of the stated components. Individually negotiated discounts are not permitted. Special prices based on assumptions about past or future purchases are not permitted. All discounts reflect standard pricing policies for the listed components. For complete details, see the pricing sections of the TPC benchmark specifications. If you find that the stated prices are not available according to these terms, please inform the TPC at pricing@tpc.org. Thank you.							

## Numerical Quantities Summary for HP NetServer LH 6000

**MQTH, Computed Maximum Qualified Throughput** **33136.45 tpmC**

### Response Times (in seconds)

	90th %-ile	Maximum	Average
New-Order	0.77s	5.05s	0.49s
Payment	0.60s	4.63s	0.33s
Order-Status	0.65s	4.87s	0.38s
Delivery (interactive portion)	0.12s	0.52s	0.11s
Delivery (deferred portion)	1.18s	3.38s	0.73s
Stock-Level	3.00s	5.55s	2.47s
Menu	0.12s	0.79s	0.11s

Response time delay added for emulated components 0.1 seconds

### Transaction Mix, in percent of total transactions

New-Order	44.89%
Payment	43.08%
Order-Status	4.00%
Delivery	4.03%
Stock-Level	4.00%

### Keying/Think Times

	Keying Time			Think Time		
	Min	Avg	Max	Min	Avg	Max
New-Order	18s	18.01s	18.03s	0s	12.04s	120.5s
Payment	3s	3.01s	3.03s	0s	12.01s	120.5s
Order-Status	2s	2.01s	2.02s	0s	10.1s	100.5s
Delivery (interactive)	2s	2.01s	2.03s	0s	5.05s	50.5s
Stock-Level	2s	2.01s	2.03s	0s	5.09s	50.5s

### Test Duration

Ramp up time	66.65 minutes
Measurement interval	20 minutes
Transactions during measurement interval	1535593
Ramp down time	11.88 minutes

### Checkpointing

Number of checkpoints in measurement interval	1
Checkpoint Interval	20 minutes

### Reproducibility Run

Throughput	33127.45 tpmC
Relative to MQTH	-0.03%