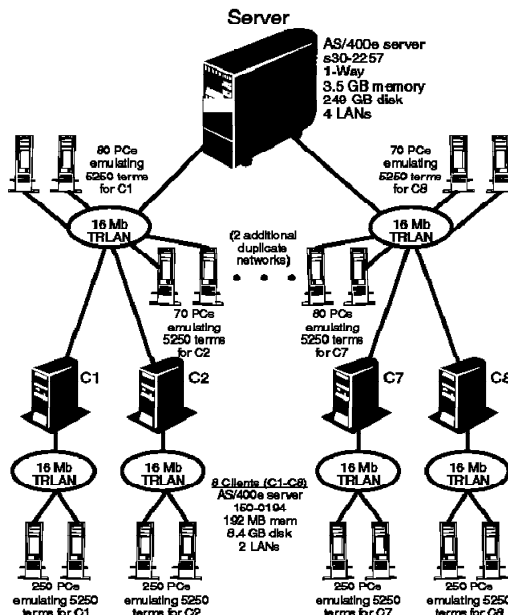


<b>IBM</b>	<b>AS/400e server model s30 with feature code 2257</b>		<b>TPC-C Rev. 3.3</b>	
			<b>Report Date: August 19, 1997</b>	
<b>Total System Cost</b>	<b>TPC-C Throughput</b>	<b>Price/Performance</b>	<b>Availability Date</b>	
<b>\$517,916</b>	<b>3235.6</b>	<b>\$161</b>	<b>August 29, 1997</b>	
<b>Processors</b>	<b>Database Manager</b>	<b>Operating System</b>	<b>Other Software</b>	<b>Number of Users</b>
<b>1 AS/400e s30-2257 8 AS/400e 150-0194</b>	<b>DB2 for AS/400 Version 4 Release 1</b>	<b>OS/400 Version 4 Release 1</b>	<b>CICS for OS/400 V3 R6 INT LNG ENV COBOL OS/400 V3 R7 INT LNG ENV C OS/400 V3 R7</b>	<b>2600</b>

**AS/400e server model s30-2257 C/S Priced Configuration**



<b>System components:</b>	<b>Qty:</b>	<b>Description:</b>
<b>Server</b>	<b>1</b>	
<b>Processors</b>	<b>1</b>	<b>AS/400e server s30-2257</b>
<b>Memory</b>		<b>3.5 GB main memory</b>
<b>Disk controllers</b>	<b>2</b>	<b>6532 DASD IOP</b>
	<b>1</b>	<b>Integrated multifunction IOP</b>
<b>Disk drives</b>	<b>29</b>	<b>8589 MB DASD</b>
<b>Total storage</b>		<b>249 GB</b>
<b>Clients (each):</b>	<b>8</b>	
<b>Processor</b>	<b>1</b>	<b>AS/400e server 150-0194</b>
<b>Memory</b>		<b>192 MB main memory</b>
<b>Disk controller</b>	<b>1</b>	<b>Integrated multifunction IOP</b>
<b>Disk drives</b>	<b>2</b>	<b>4194 MB DASD</b>

AS/400e server model s30-2257		TPC-C REV 3.3 EXECUTIVE SUMMARY					
		Report Date: August 19, 1997					
Description	Part Number	Third Party Brand	Pricing	Unit Price	Qty.	Extended Price	5-Year Maint Price
<b>Server Hardware:</b>							
AS/400e server model s30 Processor	2257			\$55,000	1	\$55,000	\$16,560
Base Token-Ring Adapter	Bundled				1		
Battery Backup	Bundled				1		
Twinax Work Station Controller	Bundled				1		
256 MB Base Memory	Bundled				2		
Optical Link	2688			\$2,000	1	\$2,000	
Power Supply (650 Watts)	5151			\$1,950	1	\$1,950	
1024 MB Main Storage Memory	3192			\$54,272	2	\$108,544	
256 MB Main Storage Memory	3190			\$13,568	4	\$54,272	
V.24/EIA232 20-ft Cable	0330			\$125	1	\$125	
Storage Expansion Unit	5058			\$5,000	1	\$5,000	\$10,560
1063 Mbps System Unit Expansion Tower	5073			\$14,900	1	\$14,900	
1063 Mbps System Unit Expansion Tower	5083			\$14,900	1	\$14,900	\$14,400
Token Ring Adapter	6149			\$1,200	3	\$3,600	
RAID Disk Unit Controller	6532			\$9,900	2	\$19,800	
2.5 GB 1/4-inch Tape Drive	6381			\$1,500	1	\$1,500	
Programmable Regulator	2730			\$750	1	\$750	
8590 MB DASD	6713			\$3,825	28	\$107,100	
LAN/WAN/Workstation IOP	2629			\$2,600	2	\$5,200	
Opt. Base 8.58 GM Disk Unit	8713			\$1,800	1	\$1,800	
<b>Subtotal</b>						<b>\$396,441</b>	<b>\$41,520</b>
<b>Client Hardware:</b>							
AS/400e server model 150	0194			\$12,000	1	\$12,000	\$4,272
128 MB Base Memory	Bundled				1		
4.194 GB Disk Unit	Bundled				1		
Twinax Work Station Controller	Bundled				1		
Base Token Ring Adapter (9724)	Bundled				1		
Tape Drive	Bundled				1		
64 MB Additional Main Memory	3110			\$1,344	1	\$1,344	
Token Ring Adapter	2724			\$840	1	\$840	
4.194 GB Single Disk Unit	6607			\$2,025	1	\$2,025	
<b>Subtotal</b>						<b>\$16,209</b>	<b>\$4,272</b>
<b>8 Client Subtotal</b>						<b>\$129,672</b>	<b>\$34,176</b>
<b>Server Software:</b>							
IBM Operating System/400 V4R1M0	Bundled				1		
<b>Client Software:</b>							
IBM Operating System/400 V4R1M0	Bundled				8		
CICS for OS/400	5716-DFH			\$2,450	8	\$19,600	
ILE COBOL	5738-CB1			\$750	1	\$750	
Application Development Toolkit	5716-PW1			\$750	1	\$750	
DB2 Query Manager Dev. Toolkit	Bundled				1		
ILE C	5716-CX2			\$750	1	\$750	
<b>Subtotal</b>						<b>\$21,850</b>	
<b>Total</b>						<b>\$547,963</b>	<b>\$75,696</b>
<b>Discounts:</b>					<b>% Discount</b>	<b>Volume</b>	<b>Discount</b>
Revenue Allowance					15	\$547,963	(\$82,194)
Mid-range System Option					17	\$75,696	(\$12,868)
Extended Maintenance Option					17	\$62,828	(\$10,681)
<b>5-year System Total</b>						<b>Total</b>	<b>\$438,370</b>
<b>Notes:</b>						<b>Five-Year Cost of Ownership: \$517,916</b>	
<b>Revenue Allowance:</b> Applied to hardware and software.						<b>tpmC Rating: 3235.6</b>	
<b>Extended Maintenance Option (EMO):</b> Discount for prepayment of 5 years of maintenance costs for the system unit.						<b>\$/tpmC: \$161</b>	
<b>Midrange System Option:</b> This discount is available to customers when agreement is reached for the customer to perform certain service duties.							
Prices used in TPC benchmarks reflect the actual prices a customer would pay for a one-time purchase of the stated components. Individually negotiated discounts are not permitted. Special prices based on assumptions about past or future purchases are not permitted. All discounts reflect standard pricing policies for the listed components. For complete details, see the pricing sections of the TPC benchmark specifications. If you find that the stated prices are not available according to these terms, please inform the TPC at pricing@tpc.org. Thank you.							