

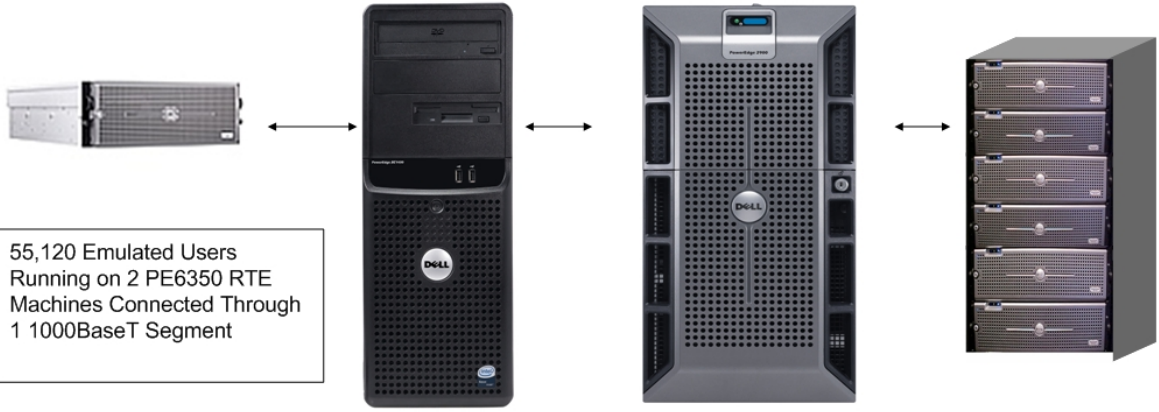
	<b>PowerEdge 2900 Server with PowerEdge SC1430 Client</b>		TPC-C Rev 5.8 Original Report Date <b>March 9, 2007</b> <b>Updated April 23, 2007 for Pricing</b>
	Total System Cost	TPC-C Throughput	Price/Performance

<b>\$63,080</b>	<b>69,564 tpmC</b>	<b>\$.91 / tpmC</b>	March 9, 2007
-----------------	--------------------	---------------------	---------------

Processor	Database Manager	Operating System	Other Software	Number of Users
1/4/4 Quad Core Intel® Xeon® E5345, 2X4MB Cache, 2.33GHZ 1333, 667MHZ FSB	Microsoft SQL Server 2005 Standard x64 Edition	Microsoft Windows Server 2003 Standard x64 Edition SP1	Windows Server 2003 Standard Edition w/ COM+ Internet Information Server 6.0 Microsoft Visual C++	55,120

PowerEdge SC1430 Client  
2/2/4 5140, Dual Core Intel® Xeon®, 4MB cache, 2.33GHz, 1333MHz FSB  
1024 MB RAM  
Broadcom NetXtreme II Gigabit Adapter  
1 80GB SATA 7.2K Disk

PowerEdge 2900  
1/4/4 E5345, Quad Core Intel® Xeon®, 2x4MB cache, 2.33GHz, 1333MHz FSB  
24GB 667MHz (12x2GB), Dual Ranked Fully Buffered DIMM  
Dual embedded Broadcom NetXtreme II Gigabit Ethernet NICs  
1 PERC5i SAS RAID Controller  
3 Dell PERC5e SAS RAID Controllers  
8 146GB, 3GBPS, SAS, 3.5IN 10K



6 PowerVault MD1000 SAS Enclosures  
90 36GB, 3GBPS, SAS, 3.5IN 15K

System Component	Server		Each Client	
Processor/Core/Cache	1	1/4/4 Quad Core Intel® Xeon® E5345, 2.33GHz, 1333, 2X4MB	2	2/2/4 Dual Core Intel® Xeon® 5140 2.33Ghz 4MB L2
Memory		24GB 667 FB-DIMM		1024 MB
Disk Controllers	3 1	Dell PERC5 RAID Controllers Integrated PERC5i Raid Controller.	1	Onboard SATA
Disk Drives	90 8	36GB SAS 15K 146GB SAS 10K	1	80GB 7.2K SATA
Total Storage	98	3548GB SAS	1	80GB SATA
Other	2 1	Broadcom NetXtreme II GigE CD-ROM	2 1	Broadcom NetXtreme II GigE CD-ROM

Dell		PowerEdge 2900		TPC-C REV 5.8 EXECUTIVE SUMMARY			
							Report Date: March-09 Updated April 23, 2007 for Pricing.
Description	Part Number	Third Party		Unit Price	Qty	Extended Price	3 yr. Maint. Price
		Brand	Pricing				
<b>Server Hardware</b>							
5345,2X4MB/2.33GHz,1333FSB	222-7261			\$1,542.00	1	\$1,542.00	\$320.00
24GB 667MHz(12x2GB),2R	311-6201			\$4,618.00	1	\$4,618.00	
PERC5/E,SAS,EXT,PCLE,MD1000	341-3023			\$799.00	3	\$2,397.00	
146GB SAS 10K (OS+LOG)	341-3029			\$369.00	8	\$2,952.00	
E773s 17-inch Color CRT Monitor	E7733YR			\$149.00	1	\$149.00	
						<b>Subtotal</b>	<b>\$11,658.00</b>
<b>PowerVault Disk Subsystem</b>							
PV MD1000,RACK,3U,15 BAY,LBZL	220-4476			\$2,680.00	6	\$16,080.00	\$9,888.00
SINGLE ENCL MGT MODULE, SAS ONLY	420-5927			\$345.83	6	\$2,074.98	
SAS CABLE,1M,MD1000	310-7082			\$30.00	6	\$180.00	
36GB SAS 15K (Data+Backups)	340-9472			\$249.00	90	\$22,410.00	
Dell Depth 4 Post Rack 30U	RACK-111-30-D	Racksolutions.com	3	\$429	1	\$429.00	
						<b>Subtotal</b>	<b>\$41,173.98</b>
<b>Server Software</b>							
SQL Server 2005 Std x64 Edition, Per processor licensing *	228-03128	Microsoft.com	1	\$5,999.00	1	\$5,999.00	
Windows Server 2003 Standard x64 Edition **	P73-0295	Microsoft.com	1	\$719.00	1	\$719.00	
Professional Support (1 Incident)		Microsoft.com	1	\$245.00	1		\$245.00
						<b>Subtotal</b>	<b>\$6,718.00</b>
<b>Client Hardware</b>							
Dell PowerEdge SC 1430, 2.33GHZ/4MB,1333 FSB	222-3183			\$1,060.00	1	\$1,060.00	\$320.00
Additional processor, 5140,4MB/2.33GHz,1333FSB	311-6142			\$749.00	1	\$749.00	
1GB,667MHz,(2X512MB),1R,FBD	311-6151			\$339.00	1	\$339.00	
80GB,SATA,1IN,7.2K RPM,HD ,7.2K	341-3757			\$99.00	1	\$99.00	
BCOM NetX 5721,Gb,ETHERNET,NIC	430-1496			\$59.00	1	\$59.00	
E773s 17-inch Color CRT Monitor	E7733YR			\$149.00	1	\$149.00	
						<b>Subtotal</b>	<b>\$2,455.00</b>
<b>Client Software</b>							
Windows Server 2003 Standard Edition **	P73-00295	Microsoft.com	1	\$719.00	1	\$719.00	
Visual C++ Standard Edition	254-00170	Microsoft.com	1	\$109.00	1	\$109.00	
						<b>Subtotal</b>	<b>\$828.00</b>
<b>User Connectivity</b>							
5ft Crossover cable	CBLC5C7	LanAdapter.com	2	\$1.38	3	\$4.14	
						<b>Subtotal</b>	<b>\$4.14</b>
All Hardware and maintenance components from Dell are discounted 16% based on total dollar value of this configuration.						<b>Other Discounts</b>	<b>\$10,530.40</b>
						<b>Total USD:</b>	<b>\$52,307</b>
						<b>Three-Year Cost of Ownership USD:</b>	<b>\$63,080</b>
Notes: For pricing verification call 1-800-BUY-Dell and reference Quote# 302841264 as a complex quote.							
** All Microsoft maintenance is covered by the maintenance costs of Microsoft SQL Server							
Pricing: 1 - Microsoft 2 - LanAdapter.com 3 -RackSolutions.com						<b>tpmC Rating:</b>	<b>69564</b>
<b>Audited by Lorna Livingtree, Performance Metrics Inc.</b>						<b>USD\$ / tpmC:</b>	<b>0.91</b>

Prices used in the TPC benchmarks reflect the actual prices a customer would pay for a one time purchase of the stated components. Individually negotiated discounts are not permitted. All discounts reflect standard pricing policies for the listed components. For complete details, see the pricing sections of the TPC benchmark pricing specifications. If you find that the stated prices are not available according to these terms, please inform the TPC at [pricing@tpc.org](mailto:pricing@tpc.org).

**MQTh**, computed Maximum Qualified Throughput

69,564 tpmC

**Response Times** (in seconds)

	Average	90 <sup>th</sup>	Max
- Neworder	0.19	0.26	5.00
- Payment	0.13	0.15	1.66
- Delivery (interactive portion)	0.10	0.11	1.26
- Stock-Level	0.22	0.30	1.58
- Order Status	0.18	0.25	4.68
- Delivery (deferred portion)	0.17	0.25	5.03
- Menu	0.11	0.11	1.75

Response time delay added for emulated components

Menu 0.1  
Resp 0.1

**Transaction Mix**, in percent of total transactions

- New-Order	44.82%
- Payment	43.03%
- Delivery	4.05%
- Stock-Level	4.05%
- Order-Status	4.04%

**Keying/Think Times** (in seconds),

	Min		Average		Max	
- New-Order	18.03	0.0	18.03	12.05	18.94	120.44
- Payment	3.03	0.0	3.03	12.06	3.95	120.43
- Delivery	2.03	0.0	2.03	5.07	2.94	50.42
- Stock-Level	2.03	0.0	2.03	5.07	2.94	50.43
- Order-Status	2.03	0.0	2.03	10.05	2.94	100.43

**Test Duration**

- Ramp-up time	68 minutes
- Measurement interval	120 minutes
- Number of checkpoints	4
- Checkpoint interval	30 minutes
- Number of transactions (all types)	19,382,105